

4

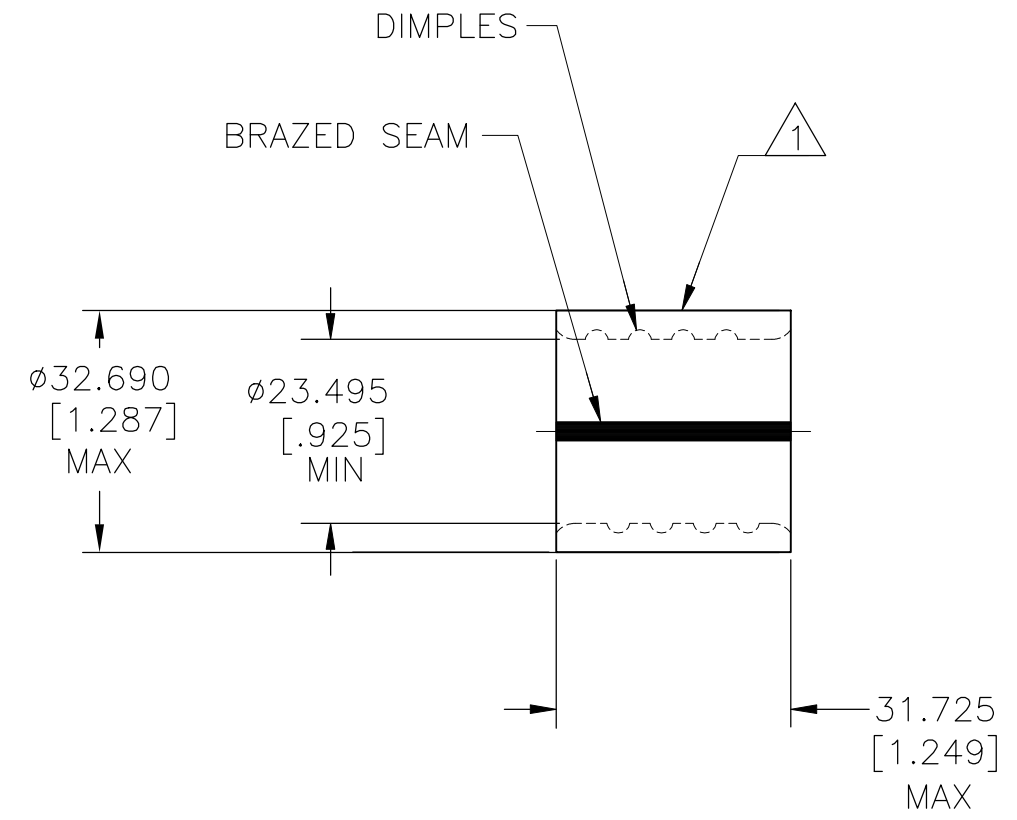
3

2

1

THIS DRAWING IS UNPUBLISHED. RELEASED FOR PUBLICATION
 © COPYRIGHT - TE Connectivity Ltd. ALL RIGHTS RESERVED.

REVISIONS				
P	LTR	DESCRIPTION	DATE	APVD
	D	REV PER 0G3A-0435-02	30SEP02	JR
	D1	REVISED PER ECO-19-001989	08FEB2019	RS DR



AMP WIRE RANGE	E13288 Listed
400 MCM STRANDED	400 MCM STRANDED
LR7189 Certified	MILITARY P/N AND CLASS
400 MCM STRANDED	NOT APPLICABLE

- 1 STAMP AMP W* 400 MCM APPROX AS SHOWN
- 2 MATERIAL THK: 3.911±0.102[.154±.004]
- 3 STAMP FOR MANUFACTURING LOCATION OR CODE PERMISSIBLE.

AMP INCORPORATED
 CUSTOMER SERVICE SYSTEMS

THIS DRAWING IS A CONTROLLED DOCUMENT.

DWN	DK SCHRUM	5/6/93
CHK	AJ KAUFMAN	5/14/93
APVD	RE ROSER	5/14/93



FOR ADDITIONAL PRODUCT INFORMATION OR COPIES OF DRAWINGS AND TECHNICAL DOCUMENTS	PRODUCT INFORMATION CENTER 1-800-522-6752	MAX RECOMMENDED OPERATING TEMPERATURE: 170°C [338°F] MAX
FOR APPLICATION TOOLING INFORMATION	TOOLING ASSISTANCE CENTER 1-800-722-1111	
FOR ORDER ENTRY	1-800-526-5142	VOLTAGE RATING: NOT APPLICABLE
		CIRCULAR MIL AREA: 192.5-242.2mm²[380-478] MCM STRANDED

DIMENSIONS: mm [INCHES]	TOLERANCES UNLESS OTHERWISE SPECIFIED:
	0 PLC ± -
	1 PLC ± -
	2 PLC ± -
	3 PLC ± 0.203[.008]
	4 PLC ± - ± -
MATERIAL COPPER PER ASTM B-152 ANNEALED	FINISH TIN PLATE 0.00254[.000100] MIN THK PER ASTM B545

PRODUCT SPEC	UL 486C
APPLICATION SPEC	-
WEIGHT	-
CUSTOMER DRAWING	

25	LOOSE PIECE	322277
QTY	PACKAGE TYPE	PART NO
NAME SPLICE, PARALLEL, SOLISTRAND, WIRE SIZE: 400 MCM		
SIZE	CAGE CODE	DRAWING NO
A3	00779	C-322277
RESTRICTED TO	-	
SCALE	SHEET	REV
1:1	1 OF 1	D1

X-ON Electronics

Largest Supplier of Electrical and Electronic Components

Click to view similar products for [Terminals](#) category:

Click to view products by [TE Connectivity](#) manufacturer:

Other Similar products are found below :

[00-054007-01074-6](#) [00-054007-70206-1](#) [00-054007-70210-8](#) [00-054007-70217-7](#) [00-054007-70226-9](#) [00-054007-70228-3](#) [00-054007-70248-1](#) [00-054007-70256-6](#) [00-054007-70301-3](#) [00-054007-70316-7](#) [00-054007-49560-4](#) [00-054007-70209-2](#) [00-054007-70225-2](#) [00-054007-70227-6](#) [00-054007-70231-3](#) [00-054007-70241-2](#) [00-054007-70242-9](#) [00-054007-70244-3](#) [00-054007-70246-7](#) [00-054007-70263-4](#) [00-054007-70288-7](#) [00-054007-70290-0](#) [00-054007-70300-6](#) [00-054007-70304-4](#) [01-2065-1-0216](#) [01-2900-1-04412](#) [00581P0075](#) [600TS-10](#) [60205-1](#) [604200-1](#) [605601-1](#) [60598-1-CUT-TAPE](#) [61314-6-C](#) [61810-3](#) [61-S](#) [61-SN](#) [626-0194](#) [62-NBM-A](#) [62-SN](#) [62-SP](#) [63-S](#) [640179-1](#) [M55155/059I03](#) [M55155/079C01](#) [M55155/099H02](#) [M55155/109H01](#) [M55155/109H02](#) [M55155/12XH05](#) [M55155/16XH02](#) [M55155/29-5S](#)