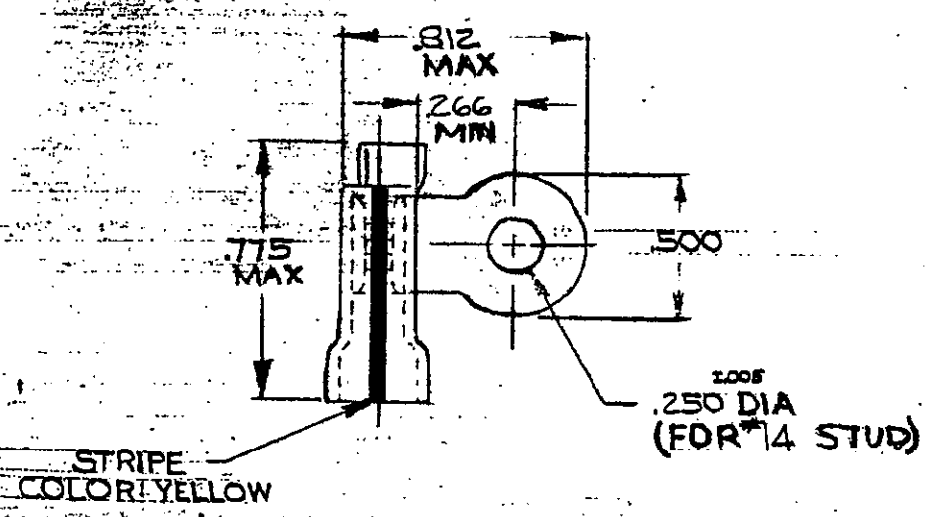


© 1957 BY AMP INCORPORATED. ALL RIGHTS RESERVED. AMP PRODUCTS COVERED BY PATENTS AND/OR PATENTS PENDING.

| REVISIONS | | | |
|-----------|-------------------|--------|----------------|
| LTR | DESCRIPTION | DATE | APPROVED |
| A | REDRAWN & REVISED | P-5836 | 7-31-68 RHW |
| B | REV/0L20-0185-97 | | 11-13-97 ME/58 |

322316



TONGUE MATERIAL THICKNESS = .040 ±.002
FOR .150 TO .230 WIRE INSULATION DIA

| | | | |
|---|---------------|--------|-------------------------------------------------|
| 1 | WIRE TERMINAL | 322316 | SLEEVE: PVC COLOR-NATURAL |
| | | | BODY: COPPER (QQ-C-576) TIN PL (MIL-T-10727) |

UNLESS OTHERWISE SPECIFIED DIMENSIONS ARE IN INCHES
TOLERANCES ON:
DECIMALS ±.008
ANGLES ±5°

| | |
|--------------|---------------------|
| CONTRACT NO. | 4 |
| DR. | S. G. Epler 7-23-68 |
| CHK. | F. J. Wolf 7-31-68 |
| APPD | Swabell 8-30-68 |
| REL | |
| DSGN APPD | |
| OTHER APPD | |



AMP INCORPORATED
HARRISBURG, PENNSYLVANIA

NAME: WIRE TERMINAL
PLASTI-GRIP RING TONGUE FLAG
WIRE SIZE: 12-10

MATERIAL:

SEE TABLE

| | | |
|------------|----------------|---------------|
| SIZE | CODE IDENT NO. | NUMBER |
| A | 00779 | 322316 |
| SCALE: 2:1 | | SHEET: 1 of 1 |

X-ON Electronics

Largest Supplier of Electrical and Electronic Components

Click to view similar products for [Terminals](#) category:

Click to view products by [TE Connectivity](#) manufacturer:

Other Similar products are found below :

[00-054007-01074-6](#) [00-054007-70206-1](#) [00-054007-70210-8](#) [00-054007-70217-7](#) [00-054007-70226-9](#) [00-054007-70228-3](#) [00-054007-70248-1](#) [00-054007-70256-6](#) [00-054007-70301-3](#) [00-054007-70316-7](#) [00-054007-49560-4](#) [00-054007-70209-2](#) [00-054007-70225-2](#) [00-054007-70227-6](#) [00-054007-70231-3](#) [00-054007-70241-2](#) [00-054007-70242-9](#) [00-054007-70244-3](#) [00-054007-70246-7](#) [00-054007-70263-4](#) [00-054007-70288-7](#) [00-054007-70290-0](#) [00-054007-70300-6](#) [00-054007-70304-4](#) [01-2065-1-0216](#) [01-2900-1-04412](#) [00581P0075](#) [600TS-10](#) [60205-1](#) [604200-1](#) [605601-1](#) [60598-1-CUT-TAPE](#) [61314-6-C](#) [61810-3](#) [61-S](#) [61-SN](#) [626-0194](#) [62-NBM-A](#) [62-SN](#) [62-SP](#) [63-S](#) [640179-1](#) [M55155/059I03](#) [M55155/079C01](#) [M55155/099H02](#) [M55155/109H01](#) [M55155/109H02](#) [M55155/12XH05](#) [M55155/16XH02](#) [M55155/29-5S](#)