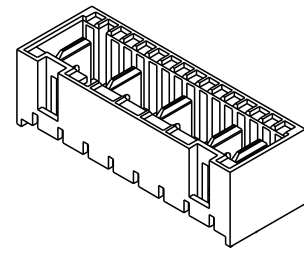
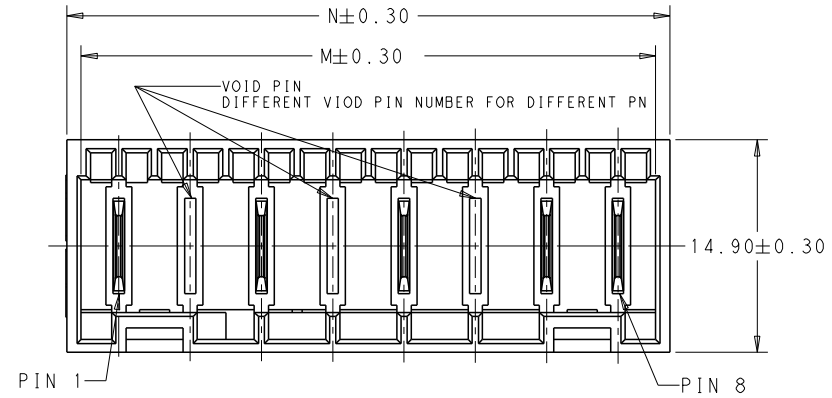
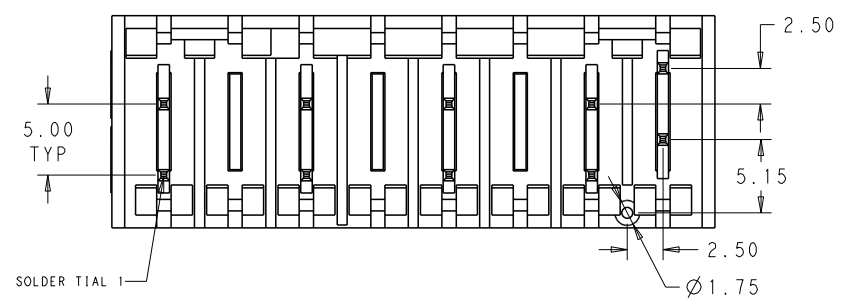
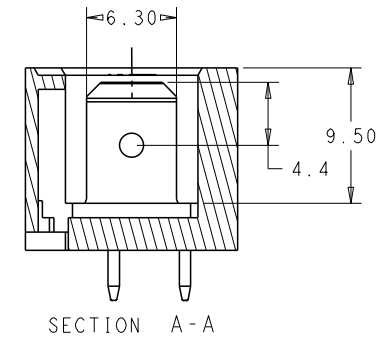
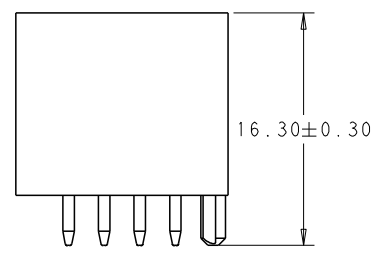
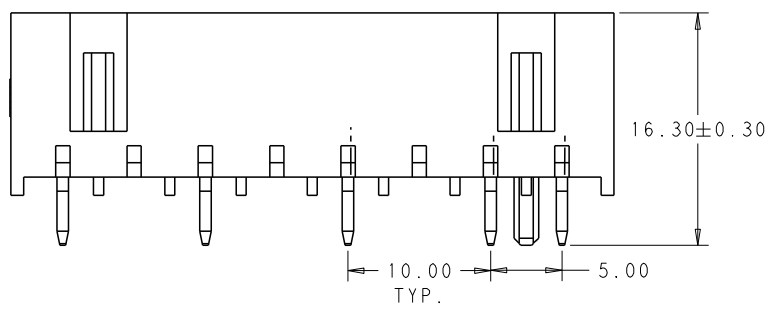


LOC		DIST		REVISIONS			
P	LYR	DESCRIPTION	DATE	DWN	APVD		
A13		ECR-17-008597	15JUN2017	MKD	RR		
A14		ECR-17-017719	12DEC2017	LZ	RR		



- HOUSING HAS RAST 5 COMPLIANT KEYING LATCHING, AND POLARIZATION, TAB IS 6.30 x 0.8mm ACCORDING TO DIN 46224;
 - MATERIAL: HOUSING NYLON, UL94 V0, 750 °C GWT NO FLAME;
 - FINISH: CONTACTS, TIN PLATING OVERALL, NICKEL UNDER-PLATING;
 - PACKING: LOOSE PIECE OR TUBE. THE PART NUMBER IN THIS DRAWING ARE WITH LOOSE PIECE PACKING. PLEASE CONTACT TE SALES REPRESENTATIVES FOR TUBE PACKING REQUIREMENT.
- ⚠️ PRELIMINARY, NOT FOR PRODUCTION.
- ⚠️ MATERIAL: HOUSING PA66, UL94 V0
 PRODUCT COMPLY WITH GLOW WIRE REQUIREMENTS FOR PARTS OF NON-METALLIC MATERIAL SUPPORTING A CURRENT-CARRYING CONNECTION DETAILED IN IEC 60335-1, SECTION 30 (GWT).
- ⚠️ FINISH: CONTACT, SILVER PLATING OVERALL, NICKEL UNDER-PLATING.
- ⚠️ SPECIAL VERSION: SHORT PEG DESIGN, DETAIL IN SHEET 3



42.30	40.30	8
37.30	35.30	7
32.30	30.30	6
27.30	25.30	5
22.30	20.30	4
17.30	15.30	3
12.30	10.30	2
N	M	NO. OF POS.

THIS DRAWING IS A CONTROLLED DOCUMENT.

DWN: B.P. APRT62013
 CHK: F.M. APRT62013
 APVD: APRT62013

NAME: RAST 5 TAB HEADER ASSY
 DIN STYLE, TH, VERTICAL

PRODUCT SPEC: 108-106080

APPLICATION SPEC: -

SIZE: A2 CAGE CODE: 00779 DRAWING NO: 2232511

RESTRICTED TO: -

WEIGHT: -

CUSTOMER DRAWING

SCALE: 4:1 SHEET 1 OF 3 REV: A14

4

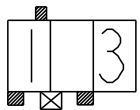
3

2

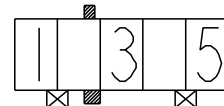
1

THIS DRAWING IS UNPUBLISHED. RELEASED FOR PUBLICATION 20
© COPYRIGHT 20 BY - ALL RIGHT REVERSED. ALL RIGHTS RESERVED.

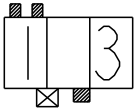
REVISIONS						
LOC	DIST	P LTR	DESCRIPTION	DATE	DWN	APVD
-	-	-	SEE SHEET 1	-	-	-



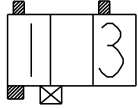
3-2232511-3 $\Delta_5 \Delta_7$



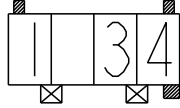
2232511-5
1-2232511-5 $\Delta_6 \Delta_5$
2328608-5 $\Delta_8 \Delta_5$



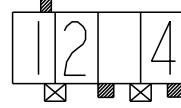
2-2232511-3 Δ_5
1-2232511-3 $\Delta_6 \Delta_5$
2328608-3 $\Delta_8 \Delta_5$



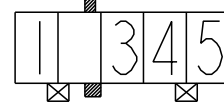
2232511-3



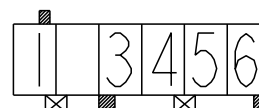
2232511-4



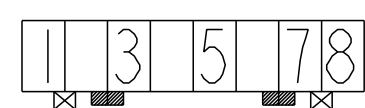
1-2232511-4



2-2232511-5 Δ_5



2232511-6



2232511-8

3 POS.

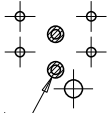
4 POS.

4 POS.

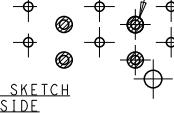
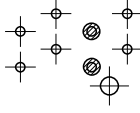
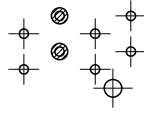
5 POS.

6 POS.

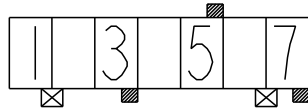
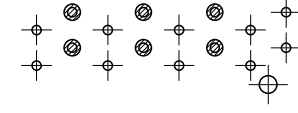
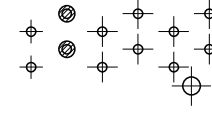
8 POS.



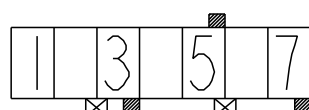
VOID PIN



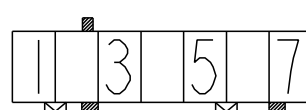
PCB LAYOUT SKETCH
SOLDER SIDE



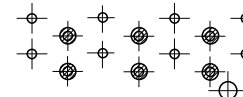
2232511-7
1-2232511-7 $\Delta_6 \Delta_5$
2328608-7 $\Delta_8 \Delta_5$



2-2232511-7 Δ_6

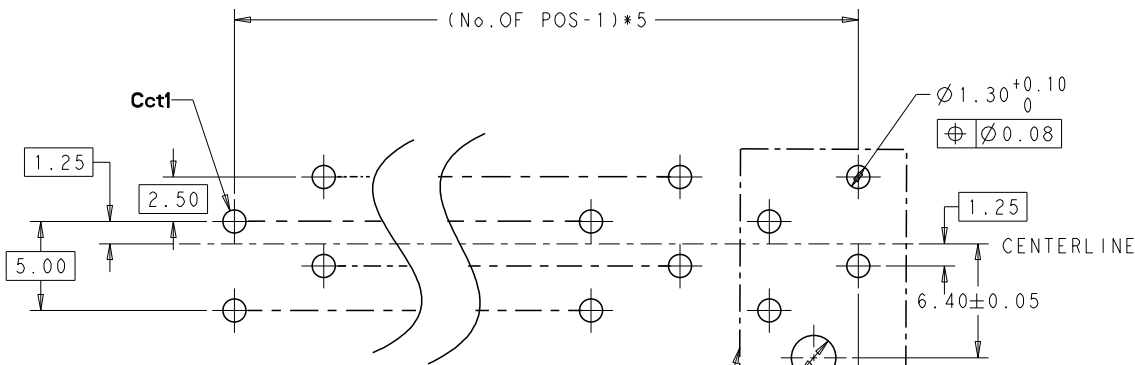


3-2232511-7



PCB LAYOUT SKETCH
SOLDER SIDE

7 POS.



THE POSITION OF THE 4 PIN TAIL HOLE AND POST ARE FIXED

$\varnothing 2.50 \pm 0.05$
HOLE FOR POLARIZING PEG

RECOMMEND PCB LAYOUT - SOLDER SIDE
PCB 1.5±0.2 THICK

NATURE

8	2232511-8
7	3-2232511-7
7	2-2232511-7 $\Delta_6 \Delta_5$
7	1-2232511-7 $\Delta_6 \Delta_5$
7	2232511-7
6	2232511-6
5	2-2232511-5 $\Delta_5 \Delta_6$
5	1-2232511-5 $\Delta_5 \Delta_6$
5	2232511-5
4	1-2232511-4 $\Delta_5 \Delta_6$
4	2232511-4 $\Delta_5 \Delta_6$
3	3-2232511-3 $\Delta_5 \Delta_6$
3	2-2232511-3 $\Delta_5 \Delta_6$
3	1-2232511-3 $\Delta_5 \Delta_6$
3	2232511-3

COLOR NO. OF POS. PART NUMBER

THIS DRAWING IS A CONTROLLED DOCUMENT. DWN B.P. APR162013
CHK - 24SEP2013

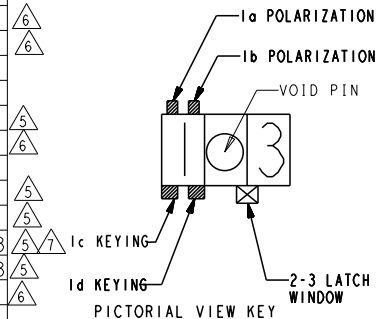
APVD - 24SEP2013 NAME

PRODUCT SPEC 108-106080

APPLICATION SPEC

WEIGHT

CUSTOMER DRAWING



TE TE Connectivity

RAST 5 TAB HEADER ASSY
DIN STYLE, TH, VERTICAL

SIZE CAGE CODE DRAWING NO. RESTRICTED TO

A200779 ©=2232511

SCALE 4:1 SHEET 2 OF 3 REV A14

4

3

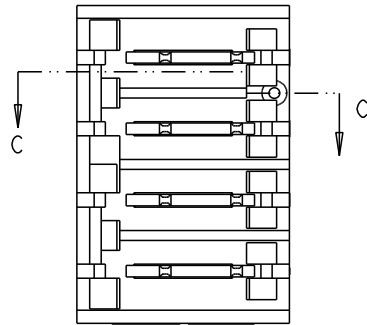
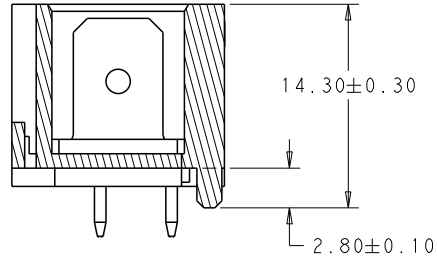
2

1

THIS DRAWING IS UNPUBLISHED. RELEASED FOR PUBLICATION 20
 © COPYRIGHT 20 BY - ALL RIGHT REVERSED ALL RIGHTS RESERVED.

LOC	DIST	REVISIONS					
		P	LTR	DESCRIPTION	DATE	DWN	APVD
-	-	-	-	SEE SHEET 1	-	-	-

△ SPECIAL VERSION: SHORT PEG DESIGN



OTHER DIMENSIONS SEE SHEET 1
 KEYING SEE SHEET 2

NATURE	7	2328608-7	△5
	5	2328608-5	△5
	3	2328608-3	△5
COLOR	NO. OF POS.	△8 PART NUMBER	

DIMENSIONS:		TOLERANCES UNLESS OTHERWISE SPECIFIED:		DWN		APRT62013	
(mm)		0 PLC	±	B.P	APRT62013	TE Connectivity NAME RAST 5 TAB HEADER ASSY DIN STYLE, TH, VERTICAL	
		1 PLC	±0.5	CHK	APRT62013		
		2 PLC	±0.25	F.M	APRT62013		
		3 PLC	±0.13	APVD	APRT62013	PRODUCT SPEC	
		4 PLC	±0.001			APPLICATION SPEC	108-106080
		ANGLES	±			RESTRICTED TO	
		FINISH	*			SIZE	CAGE CODE DRAWING NO
MATERIAL						WEIGHT	A200779 ©=2232511
						CUSTOMER DRAWING	SCALE 4:1 SHEET 3 OF 3 REV A14

X-ON Electronics

Largest Supplier of Electrical and Electronic Components

Click to view similar products for [Headers & Wire Housings](#) category:

Click to view products by [TE Connectivity](#) manufacturer:

Other Similar products are found below :

[95000-104TRLF](#) [10135584-644402LF](#) [DF62W-EP2022PCA](#) [95000-106TRLF](#) [DF62W-2022SCA](#) [DF62W-EP2022PC](#) [2203348](#) [DF62W-2022SC](#) [1084018](#) [1029039](#) [1084017](#) [802-10-012-10-002000](#) [1112640](#) [1112639](#) [891-007-9SS-BST1T](#) [000-34000](#) [0008550134](#) [0009482033](#) [0009507031](#) [57102-F02-18ULF](#) [57102-S06-03LF](#) [57202-S52-04LF](#) [PCN6-15S-2.5E](#) [0039019024](#) [58102-G61-06LF](#) [582553-1](#) [0009485154](#) [0009508121](#) [0022285053](#) [0050291907](#) [018731A](#) [LY20-4P-DT1-P1E-BR](#) [02.125.8002.8](#) [60101931](#) [60598-1 \(Cut Strip\)](#) [M1625-3R/100](#) [61062-3](#) [61082-181009](#) [CSU011177004](#) [636-1427](#) [638009-1](#) [641938-9](#) [641991-4](#) [644168-1](#) [644827-2](#) [647662-1](#) [65039-019ELF](#) [65692-001LF](#) [65781-018](#) [65781-047](#)