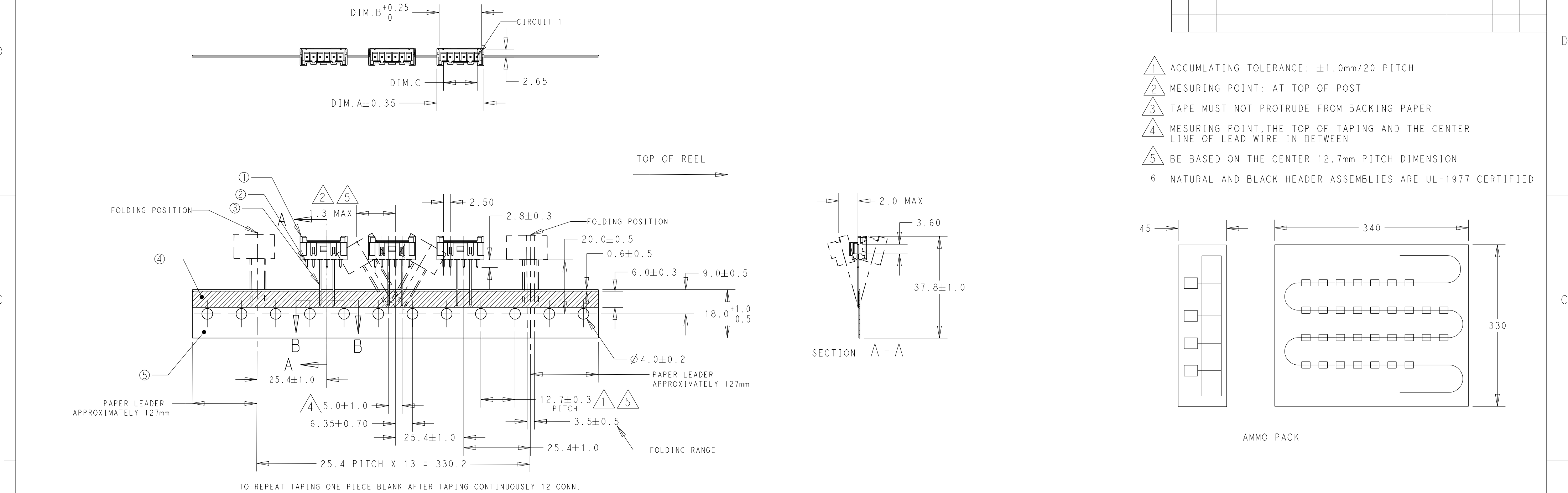
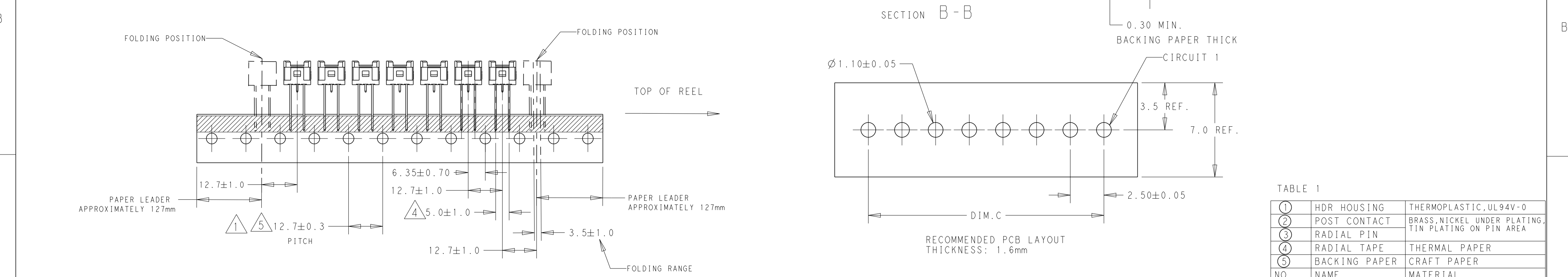


TAPING STYLE B: 4POS. THRU 8POS.



TAPING STYLE A: 2POS. AND 3POS.



THIS DRAWING IS A CONTROLLED DOCUMENT.

DIMENSIONS:

mm

MATERIAL

SEE TABLE 1

TOLERANCES UNLESS OTHERWISE SPECIFIED:

0 PLC

1 PLC

2 PLC

3 PLC

4 PLC

ANGLES

FINISH

$\pm 0.50$

$\pm 0.30$

$\pm 0.20$

$\pm$

$\pm$

$\pm 3^\circ$

DWN

CHK

APVD

PRODUCT SPEC

APPLICATION SPEC

WEIGHT

CUSTOMER DRAWING

15FEB2016

16FEB2016

16FEB2016

108-2418

114-13315

-

NAME

SIZE

CAGE CODE

DRAWING NO

RESTRICTED TO

OTTO CHEN

DANIEL Z

DANIEL Z

108-2418

114-13315

-

TE Connectivity

HEADER ASSEMBLY, VERTICAL  
ECONOMY POWER, 2.5mm CENTERLINE  
TAPING VERSION

A200779

C-2299683

SCALE

N/A

SHEET

1

OF

2

REV

C1

THIS DRAWING IS UNPUBLISHED.

RELEASED FOR PUBLICATION

© COPYRIGHT copyright.dBTe

ALL RIGHTS RESERVED.

REVISIONS

P	LTR	DESCRIPTION	DATE	DWN	APVD
	-	SEE SHEET 1	-	-	-

2POS.

DIM.D

2.5±1.0

6.35±0.70

12.7±0.3 PITCH

3POS.

4POS.

5POS.

6POS.

7POS.

8POS.

5POS. WITH KINK

SEE DETAIL A

1.00±0.15

0.76 REF

2.00±0.15

DETAIL A  
SCALE 20:1

B	450	WITHOUT KINK	2.50	17.50	20.83	22.50	8	2299683-8	1-2299683-8	2-2299683-8	3-2299683-8	4-2299683-8	5-2299683-8
B	450	WITHOUT KINK	2.50	15.00	18.33	20.00	7	2299683-7	1-2299683-7	2-2299683-7	3-2299683-7	4-2299683-7	5-2299683-7
B	450	WITHOUT KINK	2.50	12.50	15.83	17.50	6	2299683-6	1-2299683-6	2-2299683-6	3-2299683-6	4-2299683-6	5-2299683-6
B	450	WITHOUT KINK	2.50	10.00	13.33	15.00	5	2299683-9	1-2299683-9	2-2299683-9	3-2299683-9	4-2299683-9	5-2299683-9
B	450	WITH KINK	2.50	10.00	13.33	15.00	5	2299683-5	1-2299683-5	2-2299683-5	3-2299683-5	4-2299683-5	5-2299683-5
B	450	WITHOUT KINK	2.50	7.50	10.83	12.50	4	2299683-4	1-2299683-4	2-2299683-4	3-2299683-4	4-2299683-4	5-2299683-4
A	900	WITHOUT KINK	2.50	5.00	8.33	10.00	3	2299683-3	1-2299683-3	2-2299683-3	3-2299683-3	4-2299683-3	5-2299683-3
A	900	WITHOUT KINK	1.60	2.50	5.83	7.50	2	2299683-2	1-2299683-2	2-2299683-2	3-2299683-2	4-2299683-2	5-2299683-2
A	900	WITHOUT KINK	0.85	2.50	5.83	7.50	2	2299683-1	1-2299683-1	2-2299683-1	3-2299683-1	4-2299683-1	5-2299683-1
TAPING STYLE	QTY	SOLDER TAIL SHAPE	DIM.D	DIM.C	DIM.B	DIM.A	POS.	PART NO (NATURAL COLOR)	PART NO (RED COLOR)	PART NO (BLUE COLOR)	PART NO (BLACK COLOR)	PART NO (YELLOW COLOR)	PART NO (GREEN COLOR)

THIS DRAWING IS A CONTROLLED DOCUMENT.

DIMENSIONS:  
mm

MATERIAL  
SEE TABLE 1

TOLERANCES UNLESS OTHERWISE SPECIFIED:

0 PLC ±0.50

1 PLC ±0.30

2 PLC ±0.20

3 PLC ±

4 PLC ±

ANGLES ±°

FINISH

DWN 15FEB2016  
CHK OTTO CHEN  
APVD DANIEL Z  
PRODUCT SPEC 108-2418  
APPLICATION SPEC 114-13315  
WEIGHT -  
CUSTOMER DRAWING

TE Connectivity

NAME  
HEADER ASSEMBLY, VERTICAL  
ECONOMY POWER, 2.5mm CENTERLINE  
TAPING VERSION

SIZE  
A2

CAGE CODE  
00779

DRAWING NO  
C-2299683

RESTRICTED TO  
-

SCALE  
N/A

SHEET  
2

OF  
2

REV  
C1

1471-9 (3/13)

## X-ON Electronics

Largest Supplier of Electrical and Electronic Components

*Click to view similar products for* [Headers & Wire Housings](#) *category:*

*Click to view products by* [TE Connectivity](#) *manufacturer:*

Other Similar products are found below :

[892-18-020-10-001101](#) [58102-G61-06LF](#) [582553-1](#) [0009485154](#) [009176003701906](#) [0050291907](#) [LY20-4P-DT1-P1E-BR](#) [02.125.8002.8](#)  
[609-3404](#) [61062-3](#) [61082-181009](#) [622-3653LF](#) [63453-116](#) [636-1030](#) [636-1427](#) [636-3427](#) [636-4007](#) [641938-9](#) [641991-4](#) [644827-2](#) [65817-](#)  
[010LF](#) [65817-015LF](#) [65863-015LF](#) [66207-023LF](#) [67095-007LF](#) [67601157](#) [68645-018](#) [68648-049](#) [70.362.1628.0](#) [70-4210](#) [70-4226B](#) [70-](#)  
[4853B](#) [707-5020](#) [707-5028](#) [71.350.2428.0](#) [71918-208LF](#) [71961-016LF](#) [733-134](#) [733-162](#) [754199-000](#) [760-3052](#) [787-8014-00](#) [79531-3000](#)  
[FCN-360C032-B](#) [FCN-367T-T012/H](#) [FCN-723D010/2](#) [80.063.4001.1](#) [800-90-001-10-001000](#) [800-90-010-10-002000](#) [801-43-002-10-013000](#)