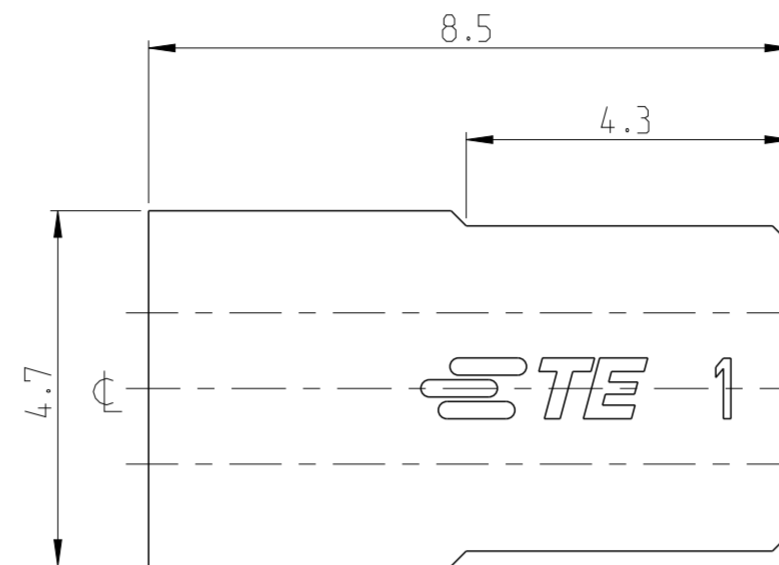
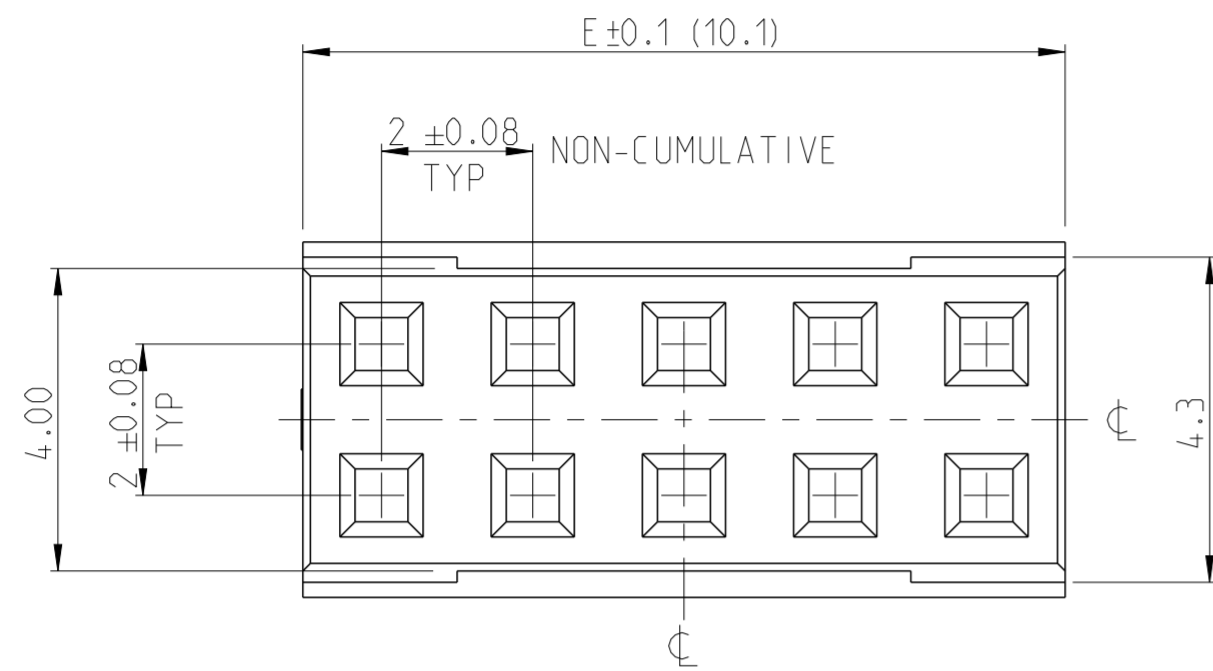


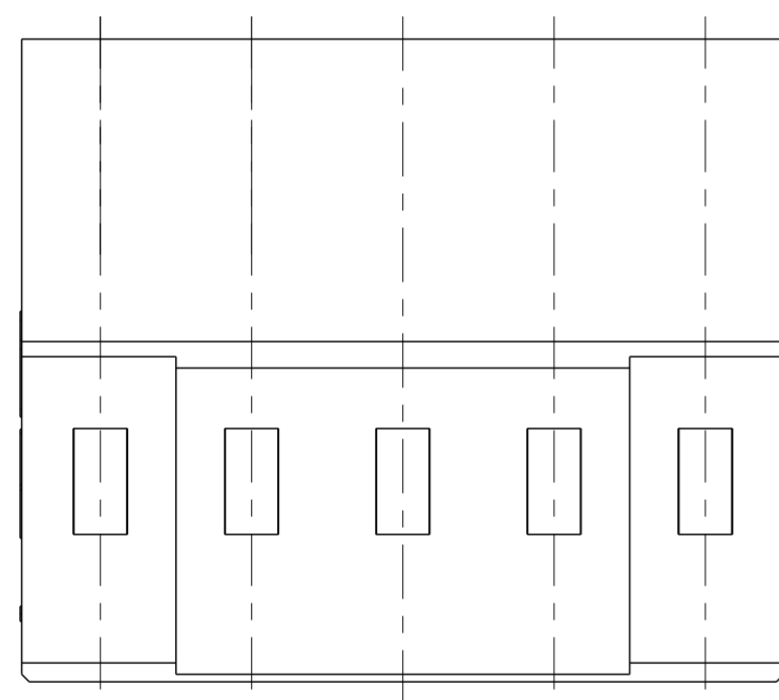
THIS DRAWING IS UNPUBLISHED. RELEASED FOR PUBLICATION  
 © COPYRIGHT 2017 TE Connectivity ALL RIGHTS RESERVED.

| REVISIONS |     |                       |           |       |
|-----------|-----|-----------------------|-----------|-------|
| P         | LTR | DESCRIPTION           | DATE      | APVD  |
|           | A   | RELEASE TO PRODUCTION | 02APR2020 | AY PS |
|           |     |                       |           |       |
|           |     |                       |           |       |



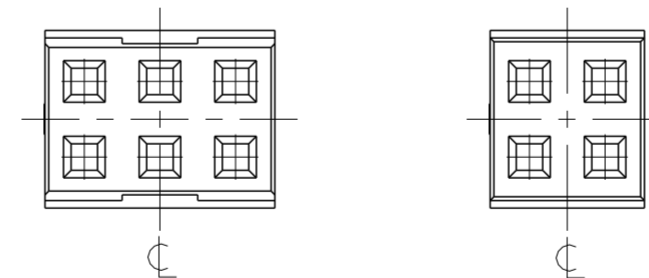
NOTES:

1. MATERIAL:  
LCP BLACK, UL94 V0
2. N = NUMBER OF POSITION PER HOUSING.
3. HOUSING TO BE USED WITH CRIMP CONTACTS  
2316113 (AWG 28-24/0.08-0.22 mm<sup>2</sup>) AND  
2316114 (AWG 30-28/0.05-0.08 mm<sup>2</sup>)
4. PACKAGING : BULK BOX

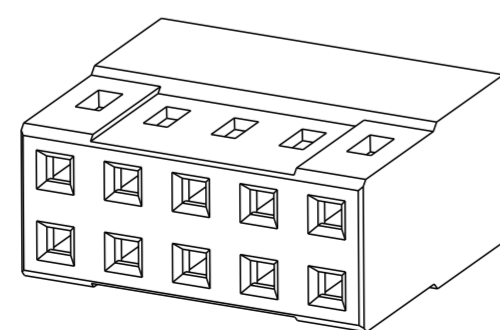


CENTERLINE FOR ODD AND EVEN POSITION HOUSINGS

SCALE 5:1




DUAL ROW HOUSING  
PLAIN VERSION  
1- -0 AS SHOWN



SCALE 5:1

| BOX PACKAGING |         |    |
|---------------|---------|----|
| 5-2316108-0   | 50.1    | 50 |
| 4-2316108-8   | 48.1    | 48 |
| 4-2316108-6   | 46.1    | 46 |
| 4-2316108-4   | 44.1    | 44 |
| 4-2316108-2   | 42.1    | 42 |
| 4-2316108-0   | 40.1    | 40 |
| 3-2316108-8   | 38.1    | 38 |
| 3-2316108-6   | 36.1    | 36 |
| 3-2316108-4   | 34.1    | 34 |
| 3-2316108-2   | 32.1    | 32 |
| 3-2316108-0   | 30.1    | 30 |
| 2-2316108-8   | 28.1    | 28 |
| 2-2316108-6   | 26.1    | 26 |
| 2-2316108-4   | 24.1    | 24 |
| 2-2316108-2   | 22.1    | 22 |
| 2-2316108-0   | 20.1    | 20 |
| 1-2316108-8   | 18.1    | 18 |
| 1-2316108-6   | 16.1    | 16 |
| 1-2316108-4   | 14.1    | 14 |
| 1-2316108-2   | 12.1    | 12 |
| 1-2316108-0   | 10.1    | 10 |
| 2316108-8     | 8.1     | 8  |
| 2316108-6     | 6.1     | 6  |
| 2316108-4     | 4.1     | 4  |
| PART NO.      | DIM "E" | N  |

|  |  |                                   |   |  |
|--|--|-----------------------------------|---|--|
| THIS DRAWING IS A CONTROLLED DOCUMENT. |  | DWN 29OCT2017<br>RAKSHITH R NAYAK |  TE Connectivity |  |
| DIMENSIONS: mm                         |  | CHK 29OCT2017<br>RAKSHITH R NAYAK |   |  |
| TOLERANCES UNLESS OTHERWISE SPECIFIED: |  | APVD 11DEC2017<br>PRASHANTH S     | NAME AMPMODU 2mm RECEPTACLE, wTB HOUSING, CRIMP, DUAL ROW, PLAIN                                      |  |
| 0 PLC ±                                |  | PRODUCT SPEC 108-64040-1          | SIZE CAGE CODE DRAWING NO RESTRICTED TO   |  |
| 1 PLC ±0.15                            |  | APPLICATION SPEC 114-32173        | A2100779 C-2316108  |  |
| 2 PLC ±0.10                            |  | WEIGHT -                          | SCALE 10:1 SHEET 1 OF 1 REV A   |  |
| 3 PLC ±                                |  | CUSTOMER DRAWING                  |   |  |
| 4 PLC ±                                |  |                                   |   |  |
| ANGLES ±2°                             |  |                                   |   |  |
| FINISH -                               |  |                                   |   |  |
| MATERIAL SEE NOTE 1                    |  |                                   |   |  |

## X-ON Electronics

Largest Supplier of Electrical and Electronic Components

*Click to view similar products for [Headers & Wire Housings](#) category:*

*Click to view products by [TE Connectivity](#) manufacturer:*

Other Similar products are found below :

[892-18-020-10-001101](#) [58102-G61-06LF](#) [582553-1](#) [0009485154](#) [009176003701906](#) [0050291907](#) [LY20-4P-DT1-P1E-BR](#) [02.125.8002.8](#)  
[609-3404](#) [61062-3](#) [61082-181009](#) [622-3653LF](#) [63453-116](#) [636-1030](#) [636-1427](#) [636-3427](#) [636-4007](#) [641938-9](#) [641991-4](#) [644827-2](#) [65817-010LF](#) [65817-015LF](#) [65863-015LF](#) [66207-023LF](#) [67095-007LF](#) [67601157](#) [68645-018](#) [68648-049](#) [70.362.1628.0](#) [70-4210](#) [70-4226B](#) [70-4853B](#) [707-5020](#) [707-5028](#) [71.350.2428.0](#) [71918-208LF](#) [71961-016LF](#) [733-134](#) [733-162](#) [754199-000](#) [760-3052](#) [787-8014-00](#) [79531-3000](#)  
[FCN-360C032-B](#) [FCN-367T-T012/H](#) [FCN-723D010/2](#) [80.063.4001.1](#) [800-90-001-10-001000](#) [800-90-010-10-002000](#) [801-43-002-10-013000](#)