

THIS DRAWING IS UNPUBLISHED.

RELEASED FOR PUBLICATION

2017

© COPYRIGHT 2017

BY -

ALL RIGHTS RESERVED.

REVISIONS

P	LTR	DESCRIPTION	DATE	DWN	APVD
	B	REVISED PER ECR-19-014834	23SEP2019	RS	MG

NOTES:

1. MATERIALS:  
HOUSING: GLASS FILLED PBT, HALOGEN FREE FLAME RETARDANT  
COLOR : NATURAL  
CONTACTS: GOLD PLATED COPPER ALLOY
2. PRODUCT COMPLIES WITH RESTRICTION ON HAZARDOUS SUBSTANCES  
DIRECTIVE 2011/65/EU
3. SCREW TO BE USED - PAN HEAD M3, #4-40, LENGTH 12mm MIN.  
RECOMMENDED SCREW TORQUE: 0.4 - 0.6 Nm
4. LED RETENTION ON 2 CORNERS WITH DOUBLE SIDED ADHESIVE TAPE.
5. MATING CONNECTOR TE PART NO: 353908-4 OR 2-353908-4 OR 6-353908-4
6. DIMENSIONS SHOWN ARE IN MATED POSITION WITH LED
7. SEE SHEET 3 FOR RECOMMENDED PIN LAYOUT & ADDITIONAL INFORMATION
8. ELECTRICAL RATINGS:  
- USE WITH A 48V DC CONSTANT VOLTAGE CLASS 2 POWER SUPPLY,  
±10% TOLERANCE  
- LED FORWARD VOLTAGE HAVE THE FOLLOWING RANGE: 25 - 41VDC.

HOLES FOR M3/4-40 SCREWS

DALI 2 LOGO

REMOVE RELEASE  
LINER BEFORE  
ASSEMBLING LED

LED CONTACT

SECTION A-A

DETAIL Z

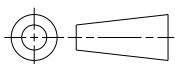
DETAIL Z

PRODUCT DATA SHEET 1-1773935-6  
FOR ADDITIONAL INFORMATION

THIS DRAWING IS A CONTROLLED DOCUMENT.

DIMENSIONS:

mm



MATERIAL  
SEE NOTES

TOLERANCES UNLESS  
OTHERWISE SPECIFIED:

0 PLC	±0.2
1 PLC	±0.1
2 PLC	±0.1
3 PLC	±0.1
4 PLC	±0.1
ANGLES	±0.1
FINISH	-

DWN SUBHASH.M 22NOV2017

CHK MARCO.Z 22NOV2017

APVD O.LFIJNSE 15DEC2017

PRODUCT SPEC

108-133109

APPLICATION SPEC

114-133109

WEIGHT SEE TABLE

CUSTOMER DRAWING



TE Connectivity

NAME  
LUMAWISE DRIVE TYPE Z50,  
DALI VERSION

SIZE CAGE CODE DRAWING NO RESTRICTED TO

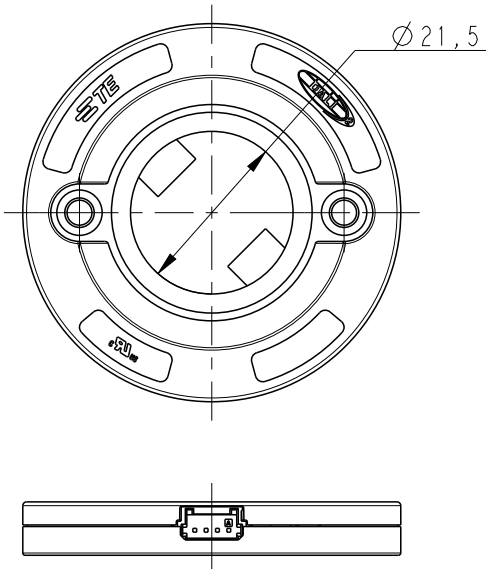
A3 00779 C-2316511

SCALE 2:1 SHEET 1 OF 4 REV B

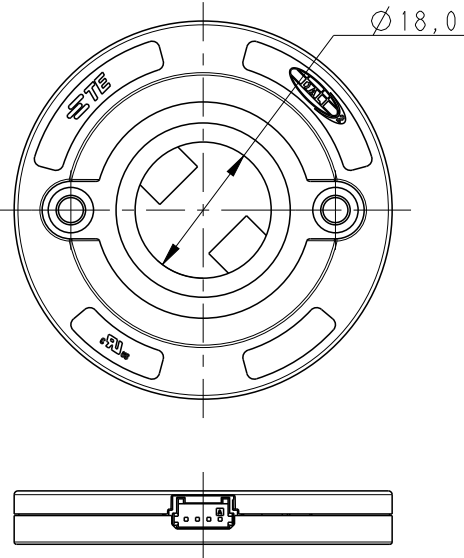
REVISIONS

P	LTR	DESCRIPTION	DATE	DWN	APVD
-	-	SEE SHEET 1	-	-	-

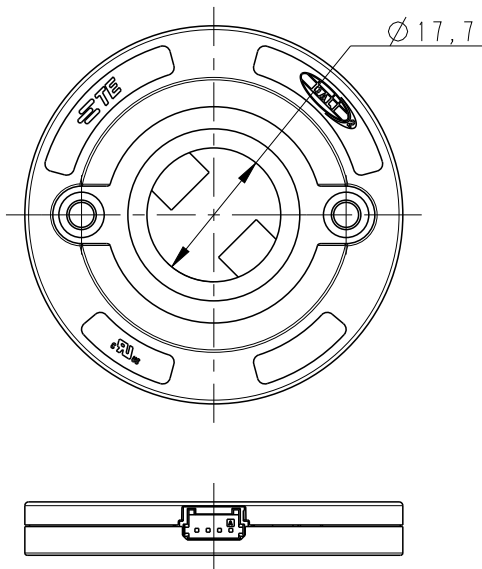
AS SHOWN 2316511-1  
SCALE 1:1



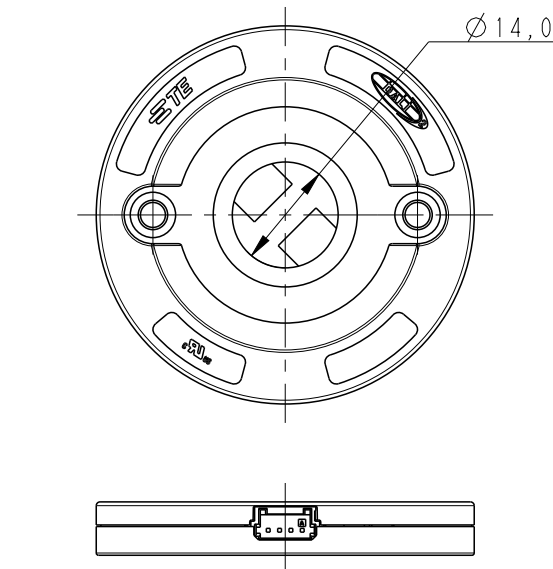
AS SHOWN 2316511-2  
SCALE 1:1



AS SHOWN 2316511-3  
SCALE 1:1



AS SHOWN 2316511-4  
SCALE 1:1



THIS DRAWING IS A CONTROLLED DOCUMENT.

DWN SUBHASH.M 22NOV2017

CHK MARCO.Z 22NOV2017

APVD O.LFIJNSE 15DEC2017

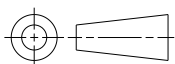
PRODUCT SPEC 108-133109

APPLICATION SPEC 114-133109

WEIGHT SEE TABLE

CUSTOMER DRAWING

DIMENSIONS:  
mm



MATERIAL  
SEE NOTES

TOLERANCES UNLESS  
OTHERWISE SPECIFIED:

0 PLC ±  
1 PLC ±0.2  
2 PLC ±0.1  
3 PLC ±  
4 PLC ±  
ANGLES ±  
FINISH -



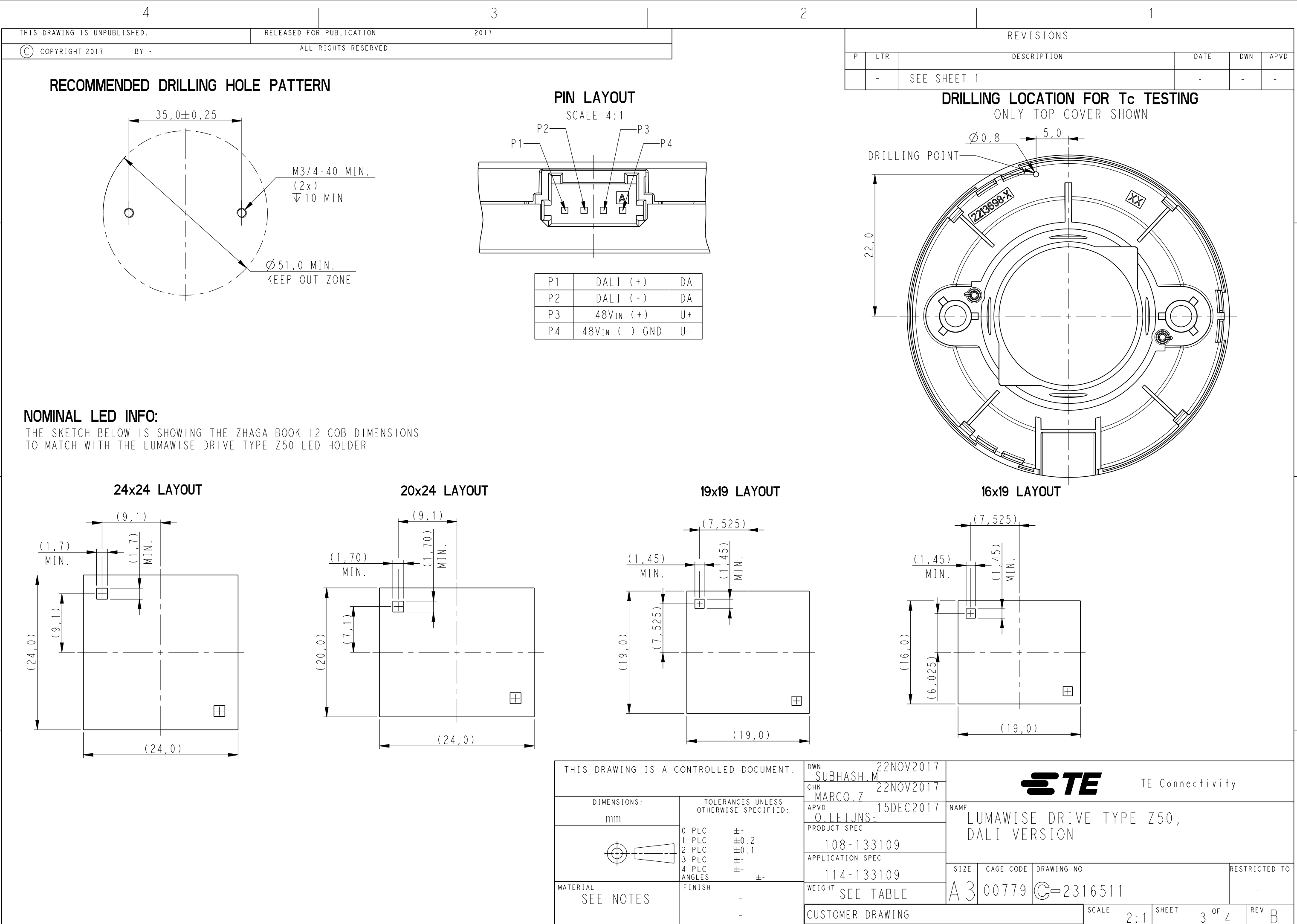
TE Connectivity

NAME  
LUMAWISE DRIVE TYPE Z50,  
DALI VERSION

SIZE CAGE CODE DRAWING NO RESTRICTED TO

A3 00779 C-2316511

SCALE 2:1 SHEET 2 OF 4 REV B



THIS DRAWING IS A CONTROLLED DOCUMENT.

DIMENSIONS:

mm

TOLERANCES UNLESS OTHERWISE SPECIFIED:

0 PLC ±0.2

1 PLC ±0.1

2 PLC ±0.1

3 PLC ±0.1

4 PLC ±0.1

ANGLES ±0.1

FINISH -

MATERIAL

SEE NOTES

DWN SUBHASH.M 22NOV2017

CHK MARCO.Z 22NOV2017

APVD O.LFIJNSE 15DEC2017

PRODUCT SPEC 108-133109

APPLICATION SPEC 114-133109

WEIGHT SEE TABLE

CUSTOMER DRAWING

TE Connectivity

NAME

LUMAWISE DRIVE TYPE Z50, DALI VERSION

SIZE

A3

CAGE CODE

00779

DRAWING NO

C-2316511

RESTRICTED TO

-

SCALE

2:1

SHEET

3 OF 4

REV


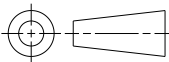
B

1470-19 (3/13)

THIS DRAWING IS UNPUBLISHED.	RELEASED FOR PUBLICATION	2017
© COPYRIGHT 2017	BY -	ALL RIGHTS RESERVED.

REVISIONS					
P	LTR	DESCRIPTION	DATE	DWN	APVD
	-	SEE SHEET 1	-	-	-

L2C5-xxxx1202E0900; L2C5-xxxx1203E0900 1202s; 120206xCx; 1202CRSP; 1203CRSP	LUMILEDS	16x19
NVCWL024Z; NFCWL060B-V1; NFCLL060B-V1; NFCWL036B-V1M3	NICHIA	
LC040C	SAMSUNG	
BXRH-40E8000-J-23; BXRE-xxxxxxx-x-7x	BRIDGELUX	19x19
PB16H; PB16U; PB19H; PB19U; PB26U;PB26H	LEXTAR	
CLU038-1208C4; CLU721-1206C4; CLU710-1204C1; CLU711-1204C1; CLU034-1205C4; CLU036-1205C1; CLU032-1205A5-303M1A2; CLU720-1206C1; CLL030-1212A1-50KL1A1	CITIZEN	
2PHE20CW27P34001/2PHE30CW27P34001 2PHE20CW38P34001/2PHE30CW38P34002 HM CRI80 Series; HM CRI90 Series SL Series	EDISON OPTO	
EA1919 36V/26W Series	EVERLIGHT	
CHM-11/CXM11; CXM14/CHM14; CLM-14 Gen 3; CXM-11-XH00	LUMINUS	
Soleriq 13 Gen 2 Soleriq 15	OSRAM	
DMS124***G; DMC124/125***F; DMS125/126/128***G; DMC128***F; DMS099***F	PANASONIC	
SDW02F1C; SDWx3F1C	SEOUL	
SLE-G5-LES15 SLE-G5-LES17	TRIDONIC	
LC016/19/26D; LC019D; LC026D	SAMSUNG	
LHC1-3070-1205; L2C5-xxxx-1204 LCHC1-xxxx1204; 1204CRSP; 1205CRSP; 1208CRSP; 1204; 1205; 1208	LUMILEDS	20x24
EAHP2024	EVERLIGHT	
GW6TGBJC50C; GW5DGC**M04	SHARP	
BXRE-xxxxxxx-x-7x	BRIDGELUX	24x24
Soleriq S19 GW KAHLB2.CM	OSRAM	
LED DESCRIPTION	MANUFACTURE NAME	LED TYPE
LEDs COMPATIBILITY		

THIS DRAWING IS A CONTROLLED DOCUMENT.		DWN SUBHASH.M	22NOV2017	 TE Connectivity			
DIMENSIONS: mm	TOLERANCES UNLESS OTHERWISE SPECIFIED:	CHK MARCO.Z	22NOV2017	NAME LUMAWISE DRIVE TYPE Z50, DALI VERSION			
	0 PLC ±-	APVD O.LFIJNSE	15DEC2017				
	1 PLC ±0.2	PRODUCT SPEC	108-133109				
	2 PLC ±0.1	APPLICATION SPEC	114-133109				
MATERIAL SEE NOTES	FINISH - -	3 PLC ±-		SIZE	CAGE CODE	DRAWING NO	RESTRICTED TO -
		4 PLC ±-	WEIGHT SEE TABLE	A3	00779	C-2316511	
		ANGLES ±-	CUSTOMER DRAWING	SCALE 5:1		SHEET 4	OF 4

## X-ON Electronics

Largest Supplier of Electrical and Electronic Components

*Click to view similar products for* [LED Lighting Mounting Accessories](#) *category:*

*Click to view products by* [TE Connectivity](#) *manufacturer:*

Other Similar products are found below :

[C16142\\_HEKLA-SOCKET-K](#) [3SU1401-1BG20-1AA0](#) [3SU1900-0BC31-0NB0](#) [ES16-RT](#) [1SFA616921R2042](#) [1SFA616921R2131](#)  
[1SFA616921R2133](#) [1SFA616921R2143](#) [1SFA611621R1093](#) [B8910020](#) [D3980022](#) [E3990022](#) [E3990040](#) [CABI12 E BK 1M SET PRM](#)  
[FLAT8 H/U BK 1M SET PRM](#) [BEGTIN12 J/S BK 1M SET PRM](#) [1-2213678-6](#) [C16791\\_CLAMP-Z45-A](#) [F17250\\_SOLDER-CLIP-A](#) [CM22-](#)  
[4-20MA](#) [CM22-R10K-MT](#) [CM22-R1K](#) [CM22-R50K](#) [CM22-R5K-MT](#) [CM22-SLR](#) [10465](#) [M22-A](#) [M22-CK11](#) [M22-CK20](#) [M22G-XGPV](#)  
[M22-K01](#) [M22-LCH-W](#) [M22-LC-R](#) [M22-LED230-R](#) [M22-LED230-W](#) [M22-LEDC230-G](#) [M22-LEDC-G](#) [M22-LEDC-W](#) [M22-LED-G](#)  
[M22-LED-W](#) [M22-L-G](#) [M22-LH-G](#) [M22-LH-R](#) [M22-LH-W](#) [M22-L-R](#) [M22-L-W](#) [M22-L-X](#) [M22-MS](#) [M22-R10K](#) [M22-R1K](#)