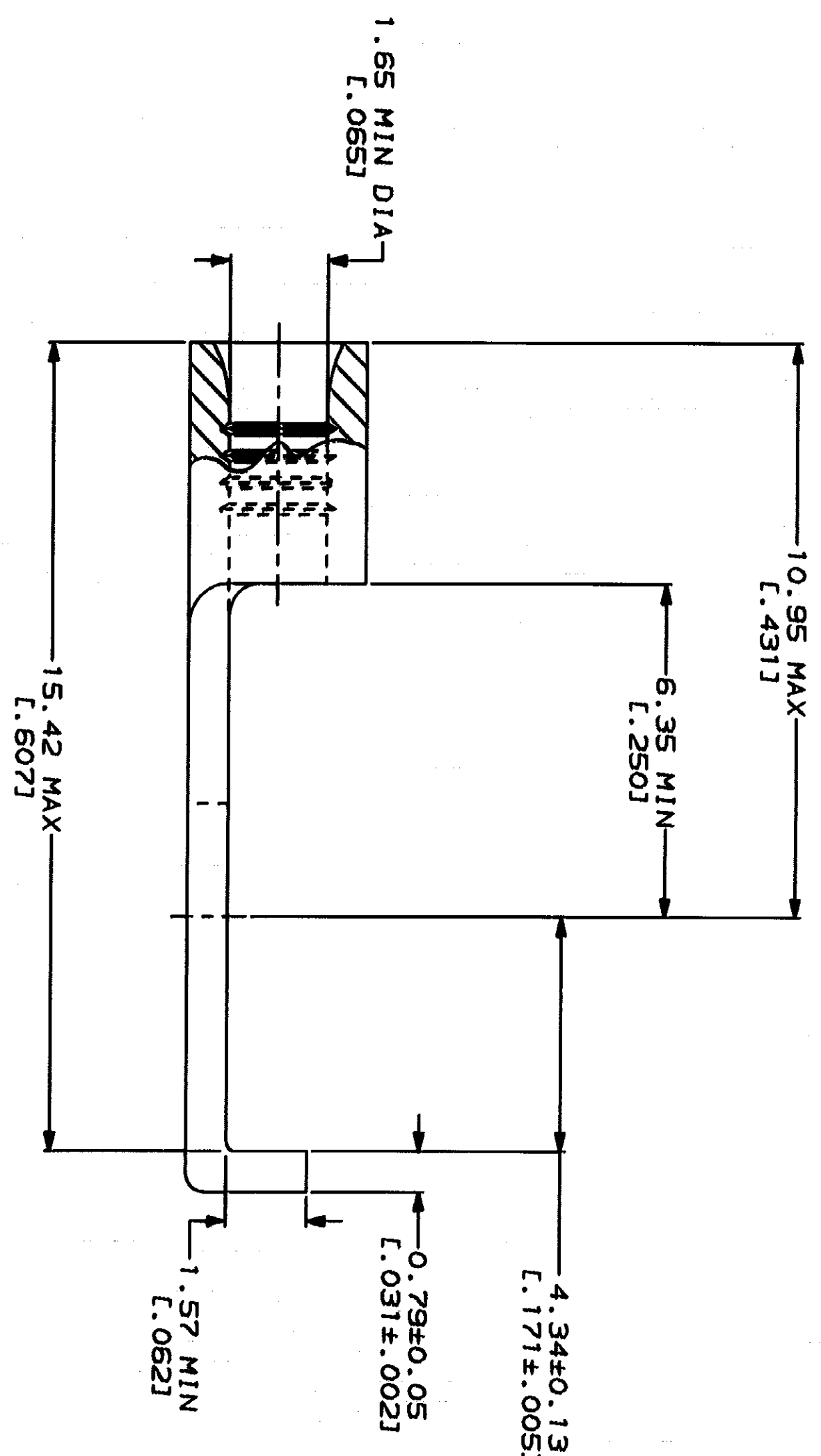


METPAC
DIMENSIONS LISTED IN mm [INCHES]

WIRE RANGE		E13288 Listed	
22-16 AWG STRANDED		22-16 AWG STRANDED	
● LR7189 Certified		MILITARY P/N AND CLASS	
NOT CERTIFIED		NOT APPLICABLE	

1 STAMP AMP 22-18* APPROX AS SHOWN
22-16 TERMINALS ARE STAMPED 22-18 IN ACCORDANCE WITH MILITARY SPECIFICATION MIL-T-7928, COMMERCIAL WIRE RANGE IS 22-16



AMP INCORPORATED CUSTOMER SERVICE SYSTEMS		MAX RECOMMENDED OPERATING TEMPERATURE: 170°C MAX	
FOR ADDITIONAL PRODUCT INFORMATION OR COPIES OF DRAWINGS AND TECHNICAL DOCUMENTS	1-800-522-6752	VOLTAGE RATING: NOT APPLICABLE	
FOR APPLICATION TOOLING INFORMATION	1-800-722-1111	WIRE CROSS SECTIONAL AREA RANGE: 0.26-1.65mm ² (509-3,260) CIR MILS STRANDED	
FOR ORDER ENTRY	1-800-526-5142	FINISH: TIN PLATE 0.0025±L.000100J MIN THK PER MIL-T-10727	

DO NOT SCALE PRINT. UNLESS SPECIFIED DIMENSIONS IN THIS DRAWING ARE IN INCHES. TOLERANCES ON: 2 P.L.C. DEC ± .005 ANGLES ± .5° MATERIAL: COPPER PER ASTM B-152 ANNEALED	DR 3-2-93 JA BRINKMAN
3 P.L.C. DEC ± .005	CHK 3-2-93 DA PATTERSON
APPD 3-2-93 DE MILLER	APPD 3-2-93 JL NECKLEY
PRODUCT SPEC	APPLICATION SPEC

AMP INCORPORATED Harrisburg, PA 17105-3608	32494 PART NO
TERMINAL, FLANGED SPADE, BUDGET	32494
SIZE: 00779	CAGE CODE: 00779
SCALE: 10:1	DRAWING NO: 32494
	SHEET: 1 OF 1

X-ON Electronics

Largest Supplier of Electrical and Electronic Components

Click to view similar products for [Terminals](#) category:

Click to view products by [TE Connectivity](#) manufacturer:

Other Similar products are found below :

[00-054007-01074-6](#) [00-054007-70206-1](#) [00-054007-70210-8](#) [00-054007-70217-7](#) [00-054007-70226-9](#) [00-054007-70228-3](#) [00-054007-70248-1](#) [00-054007-70256-6](#) [00-054007-70301-3](#) [00-054007-70316-7](#) [0-0320562-0](#) [00-054007-49560-4](#) [00-054007-70209-2](#) [00-054007-70225-2](#) [00-054007-70227-6](#) [00-054007-70231-3](#) [00-054007-70241-2](#) [00-054007-70242-9](#) [00-054007-70244-3](#) [00-054007-70246-7](#) [00-054007-70263-4](#) [00-054007-70288-7](#) [00-054007-70290-0](#) [00-054007-70300-6](#) [00-054007-70304-4](#) [01-2065-1-0216](#) [01-2900-1-04412](#) [00581P0075](#) [600TS-10](#) [60205-1](#) [604200-1](#) [605601-1](#) [60598-1-CUT-TAPE](#) [61314-6-C](#) [61810-3](#) [61-S](#) [61-SN](#) [626-0194](#) [62-NBM-A](#) [62-SN](#) [62-SP](#) [63-S](#) [640179-1](#) [M55155/059I03](#) [M55155/079C01](#) [M55155/099H02](#) [M55155/109H01](#) [M55155/109H02](#) [M55155/12XH05](#) [M55155/16XH02](#)