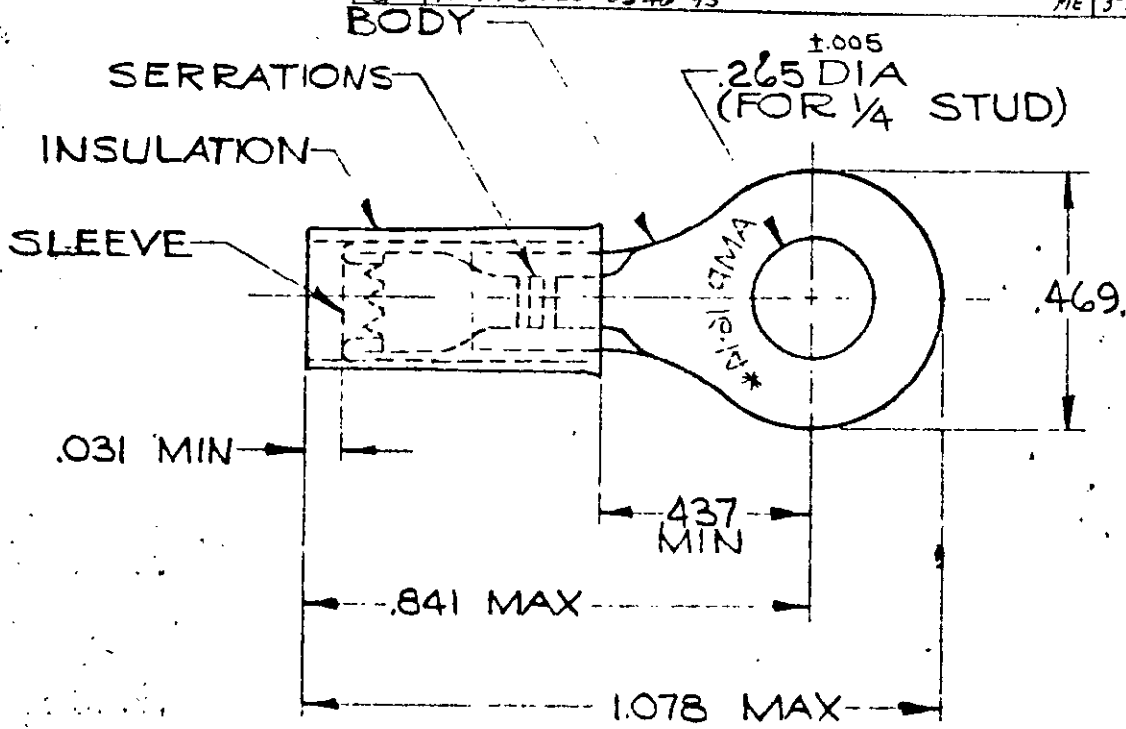


DRAWING MADE IN AMERICAN PROJECTION


LOC G PRINT DIST 14

© 1958 BY AMP INCORPORATED, ALL RIGHTS RESERVED. AMP PRODUCTS COVERED BY PATENTS AND/OR PATENTS PENDING.

REVISIONS			
LTR	DESCRIPTION	DATE	APPROVED
C	REDRAWN, REV. & ADDED TAPE NO. P-6079	3-5-70	FCY
D	2-1 INACTIVE PER P-7360	1-11-82	JRZ
E	REACTIVATE 2-1 P9887	2-24-83	ZY
F	REV PER G-4732	7/26/88	JF
G	REV 10720-0546-95	3-22-95	ME MB1



FOR .115 TO .170 WIRE INSULATION DIA.
TONGUE MATERIAL THK. = .031 ±.002

325034 ON TAPE	2-325034-1	BODY: COPPER (QQ-C-576) TIN PL (MIL-T-10727)		
WIRE TERMINAL	325034	SLEEVE: COPPER (QQ-C-576)		
		INSULATION: BLACK NYLON		
QTY	DESCRIPTION	PART NO.	MATERIAL & FINISH	
UNLESS OTHERWISE SPECIFIED DIMENSIONS ARE IN INCHES TOLERANCES ON: DECIMALS ±.008 ANGLES ± 5°	CONTRACT NO.	 AMP INCORPORATED HARRISBURG, PENNSYLVANIA		
	DR. Wayne Milliams 2-25-70			
	CHK. P. Youngblood 3-5-70			
	APPD. J. Wibel 3-5-70			
	REL. P. Youngblood 3-5-70			
MATERIAL	NAME			
SEE TABLE	WIRE TERMINAL P. I. D. G. RING TONGUE WIRE SIZE: 16-14			
	DSGN APPD.	SIZE	CODE IDENT NO.	NUMBER
	OTHER APPD.	A	00779	325034
		SCALE	NTS	SHEET OF

X-ON Electronics

Largest Supplier of Electrical and Electronic Components

Click to view similar products for [Terminals](#) category:

Click to view products by [TE Connectivity](#) manufacturer:

Other Similar products are found below :

[00-054007-01074-6](#) [00-054007-70206-1](#) [00-054007-70210-8](#) [00-054007-70217-7](#) [00-054007-70226-9](#) [00-054007-70228-3](#) [00-054007-70248-1](#) [00-054007-70256-6](#) [00-054007-70301-3](#) [00-054007-70316-7](#) [00-054007-49560-4](#) [00-054007-70209-2](#) [00-054007-70225-2](#) [00-054007-70227-6](#) [00-054007-70231-3](#) [00-054007-70241-2](#) [00-054007-70242-9](#) [00-054007-70244-3](#) [00-054007-70246-7](#) [00-054007-70263-4](#) [00-054007-70288-7](#) [00-054007-70290-0](#) [00-054007-70300-6](#) [00-054007-70304-4](#) [01-2065-1-0216](#) [01-2900-1-04412](#) [00581P0075](#) [600TS-10](#) [60205-1](#) [604200-1](#) [605601-1](#) [60598-1-CUT-TAPE](#) [61314-6-C](#) [61810-3](#) [61-S](#) [61-SN](#) [626-0194](#) [62-NBM-A](#) [62-SN](#) [62-SP](#) [63-S](#) [640179-1](#) [M55155/059I03](#) [M55155/079C01](#) [M55155/099H02](#) [M55155/109H01](#) [M55155/109H02](#) [M55155/12XH05](#) [M55155/16XH02](#) [M55155/29-5S](#)