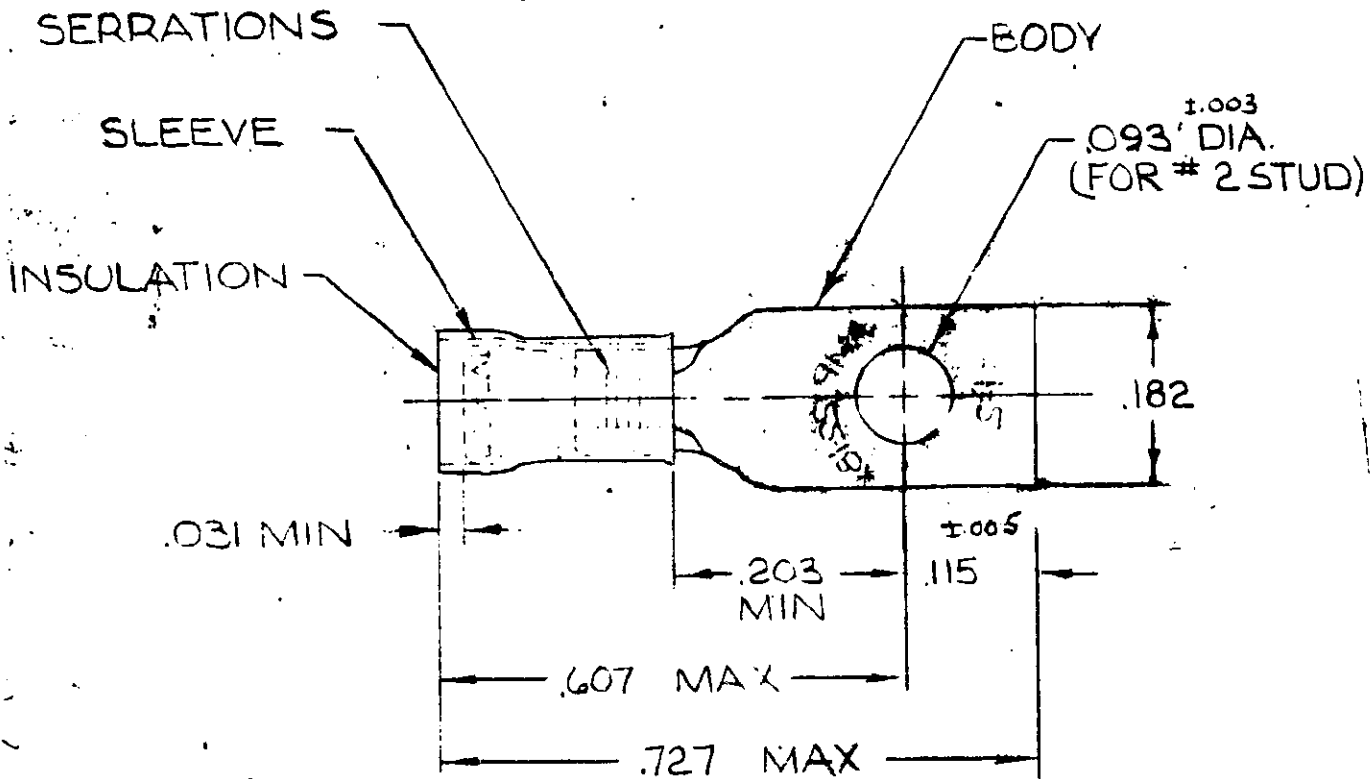


DRAWING MADE IN AMERICAN PROJECTION


LOC 6 PRINT DIST 14

©1958 BY AMP INCORPORATED. ALL RIGHTS RESERVED. AMP PRODUCTS COVERED BY PATENTS AND/OR PATENTS PENDING.

REVISIONS			
LTR	DESCRIPTION	DATE	APPROVED
C	REDRAWN REV (ADDED TAPE NO. P 6078)	1-6-70	FCY
D	REV PER G-4732	JT 7/2/88	JT
E	OBS 2-1 G-3774	DKS 3-30-89	DKS



TONGUE MATERIAL THK .031 <sup>±.002</sup>  
 FOR .080 TO .125 WIRE INS. DIA  
 MARKING 22-18 FOR MILITARY  
 COMMERCIAL RANGE 22-16

1	325148 ON TAPE	<del>2-325148-1</del> OBSOLETE	INSULATION: NYLON COLOR: RED SLEEVE: COPPER (QQ-C-576)
1	WIRE TERMINAL	325148	BODY: COPPER (QQ-C-576) TIN PL (MIL-T-10727)
QTY	DESCRIPTION	PART NO.	MATERIAL & FINISH
UNLESS OTHERWISE SPECIFIED DIMENSIONS ARE IN INCHES TOLERANCES ON: DECIMALS: ±.008 ANGLES: ± 5°		CONTRACT NO. 4	 AMP INCORPORATED HARRISBURG, PENNSYLVANIA
MATERIAL		DR. Wayne Millhiser 1-5-70 CHK. J. J. [unclear] 1-6-70 APPD. Swabel 1-6-70 REL. M. Enomaga 1-7-70	
SEE TABLE		DSGN APPD	NAME WIRE TERMINAL P.D.G. - RECTANGULAR TONGUE WIRE SIZE: 22-16
OTHER APPD		SIZE A	CODE IDENT NO. 00779 NUMBER 325148
		SCALE NTS	SHEET 1 OF 1

## X-ON Electronics

Largest Supplier of Electrical and Electronic Components

*Click to view similar products for [Terminals](#) category:*

*Click to view products by [TE Connectivity](#) manufacturer:*

Other Similar products are found below :

[00-054007-01074-6](#) [00-054007-70206-1](#) [00-054007-70210-8](#) [00-054007-70217-7](#) [00-054007-70226-9](#) [00-054007-70228-3](#) [00-054007-70248-1](#) [00-054007-70256-6](#) [00-054007-70301-3](#) [00-054007-70316-7](#) [00-054007-49560-4](#) [00-054007-70209-2](#) [00-054007-70225-2](#) [00-054007-70227-6](#) [00-054007-70231-3](#) [00-054007-70241-2](#) [00-054007-70242-9](#) [00-054007-70244-3](#) [00-054007-70246-7](#) [00-054007-70263-4](#) [00-054007-70288-7](#) [00-054007-70290-0](#) [00-054007-70300-6](#) [00-054007-70304-4](#) [01-2065-1-0216](#) [01-2900-1-04412](#) [00581P0075](#) [600TS-10](#) [60205-1](#) [604200-1](#) [605601-1](#) [60598-1-CUT-TAPE](#) [61314-6-C](#) [61810-3](#) [61-S](#) [61-SN](#) [626-0194](#) [62-NBM-A](#) [62-SN](#) [62-SP](#) [63-S](#) [640179-1](#) [M55155/059I03](#) [M55155/079C01](#) [M55155/099H02](#) [M55155/109H01](#) [M55155/109H02](#) [M55155/12XH05](#) [M55155/16XH02](#) [M55155/29-5S](#)