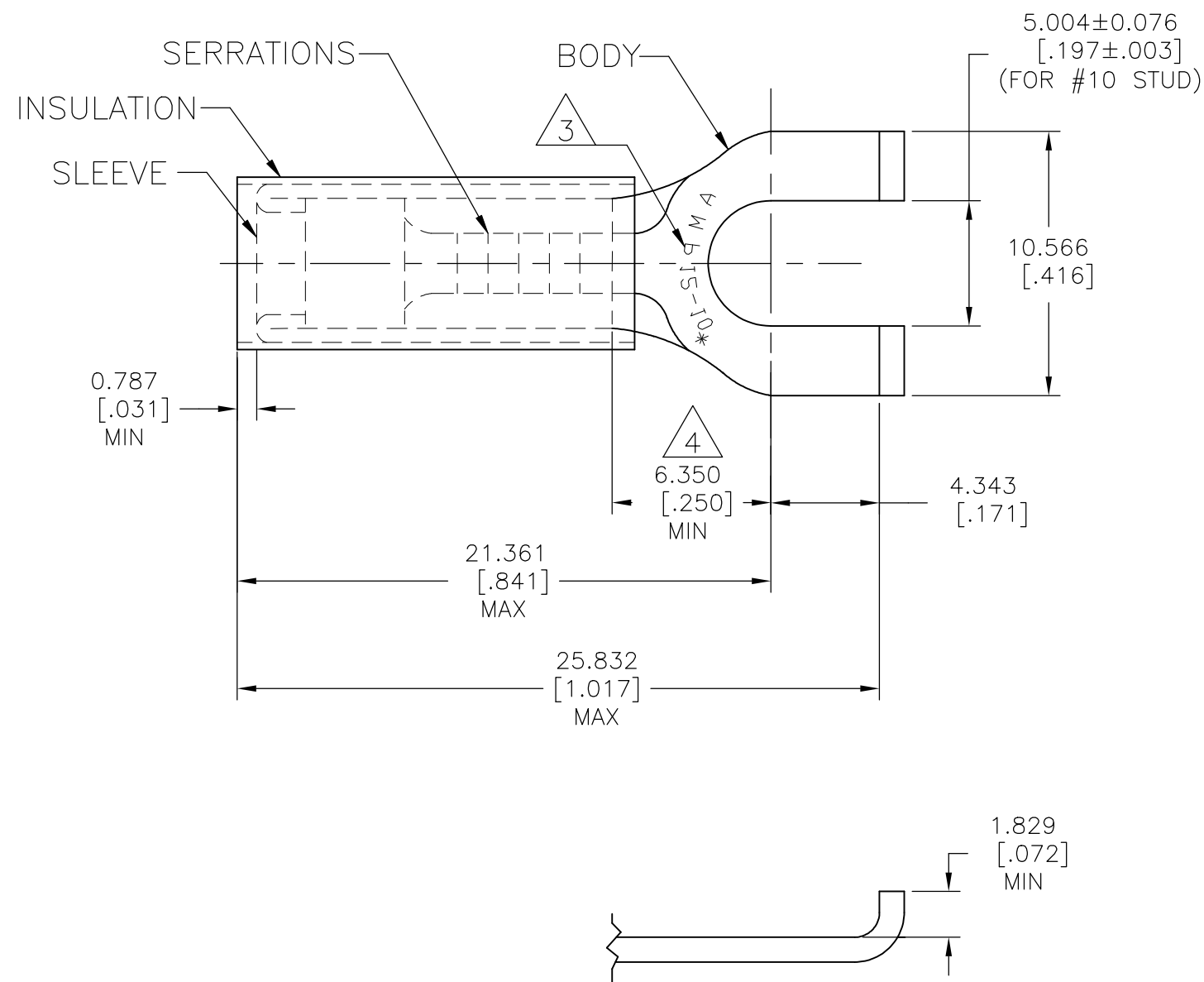


P	LTR	DESCRIPTION	DATE	DWN	APVD
E1		REVISED PER ECO-17-008114	12JUN2018	RS	DR

AMP WIRE RANGE	E13288 Listed	LR7189 Certified
12-10 AWG SOLID OR STRANDED	12-10 AWG SOLID OR STRANDED	12-10 AWG SOLID OR STRANDED



- 1 FOR 3.180 TO 5.842 [.150 TO .230] WIRE INS. DIA
- 2 BODY MATERIAL THK: 0.991±0.051 [.039±.002]
- 3 STAMP AMP 12-10* APPROX AS SHOWN
- 4 APPLIES FROM THE EDGE OF THE METAL WIRE BARREL TO THE CENTER OF THE STUD HOLE
- 5 MATERIAL:
BODY & SLEEVE: COPPER
PER ASTM B152
INSULATION: NYLON
- 6 FINISH:
BODY & SLEEVE: TIN PL PER ASTM B152
INSULATION: COLOR - YELLOW

500	LOOSE PIECE	326865
QTY	PACKAGE TYPE	PART NO

AMP INCORPORATED
CUSTOMER SERVICE SYSTEMS

THIS DRAWING IS A CONTROLLED DOCUMENT.

DWN RAVI S 12JUN2018

CHK ROHDE DANIEL 12JUN2018

APVD ROHDE DANIEL 12JUN2018



FOR ADDITIONAL PRODUCT INFORMATION OR COPIES OF DRAWINGS AND TECHNICAL DOCUMENTS
PRODUCT INFORMATION CENTER
1-800-522-6752

MAX RECOMMENDED OPERATING TEMPERATURE:
105°C [221°F] MAX

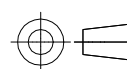
FOR APPLICATION TOOLING INFORMATION
TOOLING ASSISTANCE CENTER
1-800-722-1111

VOLTAGE RATING:
300 V MAX

FOR ORDER ENTRY
1-800-526-5142

WIRE CROSS SECTIONAL AREA RANGE,
2.62-6.64mm²[5,180-13,100] CIR MILS
SOLID OR STRANDED

DIMENSIONS:
mm [INCHES]



TOLERANCES UNLESS OTHERWISE SPECIFIED:
0 PLC ± -
1 PLC ± -
2 PLC ± -
3 PLC ± 0.127[.005]
4 PLC ± - ± 5°
ANGLES

MATERIAL
5

FINISH
6

NAME
ROHDE DANIEL

PRODUCT SPEC
UL 486 A-B

APPLICATION SPEC
114-2157

WEIGHT

WIRE TERMINAL, P.I.D.G. - FLANGED SPADE
WIRE SIZE: 12-10 AWG

SIZE	CAGE CODE	DRAWING NO	RESTRICTED TO
A3	00779	C-326865	-

CUSTOMER DRAWING SCALE NTS SHEET 1 OF 1 REV E1

X-ON Electronics

Largest Supplier of Electrical and Electronic Components

Click to view similar products for [Terminals](#) category:

Click to view products by [TE Connectivity](#) manufacturer:

Other Similar products are found below :

[00-054007-01074-6](#) [00-054007-70206-1](#) [00-054007-70210-8](#) [00-054007-70217-7](#) [00-054007-70226-9](#) [00-054007-70228-3](#) [00-054007-70248-1](#) [00-054007-70256-6](#) [00-054007-70301-3](#) [00-054007-70316-7](#) [0-0320562-0](#) [00-054007-49560-4](#) [00-054007-70209-2](#) [00-054007-70225-2](#) [00-054007-70227-6](#) [00-054007-70231-3](#) [00-054007-70241-2](#) [00-054007-70242-9](#) [00-054007-70244-3](#) [00-054007-70246-7](#) [00-054007-70263-4](#) [00-054007-70288-7](#) [00-054007-70290-0](#) [00-054007-70300-6](#) [00-054007-70304-4](#) [01-2065-1-0216](#) [01-2900-1-04412](#) [00581P0075](#) [600TS-10](#) [60205-1](#) [604200-1](#) [605601-1](#) [60598-1-CUT-TAPE](#) [61314-6-C](#) [61810-3](#) [61-S](#) [61-SN](#) [626-0194](#) [62-NBM-A](#) [62-SN](#) [62-SP](#) [63-S](#) [640179-1](#) [M55155/059I03](#) [M55155/079C01](#) [M55155/099H02](#) [M55155/109H01](#) [M55155/109H02](#) [M55155/12XH05](#) [M55155/16XH02](#)