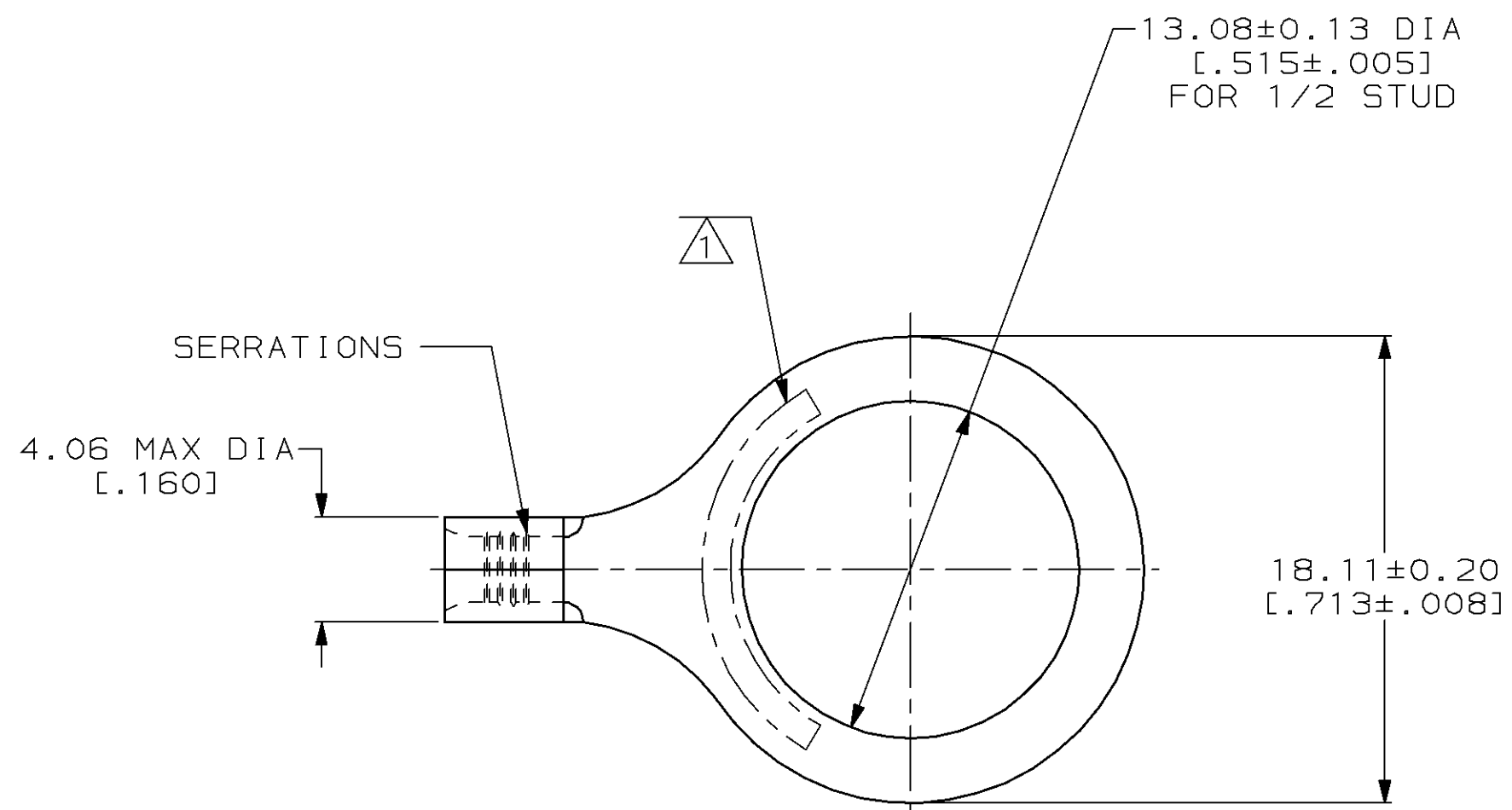


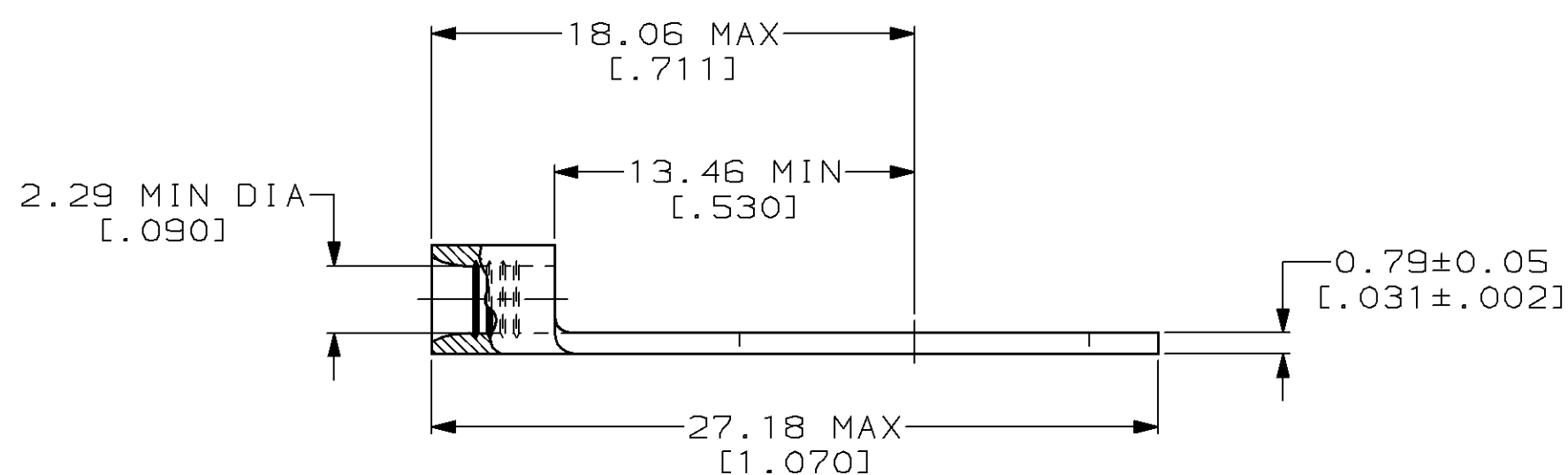
THIS DRAWING IS UNPUBLISHED. RELEASED FOR PUBLICATION ,19 .  
 © COPYRIGHT 19 BY AMP INCORPORATED. ALL INTERNATIONAL RIGHTS RESERVED.

| LOC  | DIST | P           | F    | REVISIONS |                    |         |        |
|------|------|-------------|------|-----------|--------------------|---------|--------|
| ZONE | LTR  | DESCRIPTION | DATE | APPD      |                    |         |        |
| G    | 14   |             |      | B         | REV / 0610-0026-99 | 12FEB99 | MLE SU |



|                               |                            |
|-------------------------------|----------------------------|
| <b>AMP</b><br>WIRE RANGE      | <b>UL</b> E13288<br>Listed |
| 16-14 AWG<br>STRANDED         | 16-14 AWG<br>STRANDED      |
| <b>CS</b> LR7189<br>Certified | MILITARY P/N<br>AND CLASS  |
| NOT<br>CERTIFIED              | NOT APPLICABLE             |

1 STAMP AMP 16-14\* APPROX AS SHOWN



|   |  |  |  |                            |  |
|---|--|--|--|----------------------------|--|
| AMP INCORPORATED<br>CUSTOMER SERVICE SYSTEMS  |  | MAX RECOMMENDED OPERATING TEMPERATURE:<br>170°C MAX  | DO NOT SCALE PRINT.<br>UNLESS SPECIFIED<br>DIMENSIONS IN mm [INCHES]<br>TOLERANCES ON:<br>2 PLC DEC ± -<br>3 PLC DEC ± -<br>ANGLES ± - | DR 2-5-93<br>TA BRINKMAN   | <b>AMP</b> AMP Incorporated<br>Harrisburg, PA 17105-3608 |
| FOR ADDITIONAL<br>PRODUCT INFORMATION OR<br>COPIES OF DRAWINGS<br>AND TECHNICAL DOCUMENTS | PRODUCT INFORMATION CENTER<br>1-800-522-6752 | VOLTAGE RATING:<br>NOT APPLICABLE  | MATERIAL<br>COPPER PER<br>ASTM B-152<br>ANNEALED   | CHK 2-5-93<br>DA PATTERSON |  |
| FOR APPLICATION<br>TOOLING INFORMATION  | TOOLING ASSISTANCE CENTER<br>1-800-722-1111  | WIRE CROSS SECTIONAL AREA RANGE:<br>1.04-2.62mm <sup>2</sup> [2,050-5,180] CIR MILS<br>STRANDED  | FINISH<br>TIN PLATE<br>0.00254 [0.000100] MIN<br>THK PER ASTM B-545  | APPD 2-5-93<br>DE MILLER   | NAME<br>TERMINAL, RING TONGUE,<br>BUDGET                 |
| FOR ORDER ENTRY   | 1-800-526-5142                               | THIS DRAWING IS A CONTROLLED DOCUMENT FOR<br>AMP INCORPORATED. IT IS SUBJECT TO CHANGE<br>AND THE CONTROLLING ENGINEERING ORGANIZATION<br>SHOULD BE CONTACTED FOR THE LATEST REVISION. |  | APPD 2-5-93<br>JL MECKLEY  | SIZE<br>C 00779  |
|   |  |  |  | PRODUCT SPEC<br>-          | DRAWING NO<br>C=328971                                   |
|   |  |  |  | APPLICATION SPEC<br>-      | SCALE 4:1  |
|   |  |  |  | WEIGHT -                   | SHEET 1 OF 1   |

## X-ON Electronics

Largest Supplier of Electrical and Electronic Components

*Click to view similar products for [Terminals](#) category:*

*Click to view products by [TE Connectivity](#) manufacturer:*

Other Similar products are found below :

[00-054007-01074-6](#) [00-054007-70206-1](#) [00-054007-70210-8](#) [00-054007-70217-7](#) [00-054007-70226-9](#) [00-054007-70228-3](#) [00-054007-70248-1](#) [00-054007-70256-6](#) [00-054007-70301-3](#) [00-054007-70316-7](#) [0-0320562-0](#) [00-054007-49560-4](#) [00-054007-70209-2](#) [00-054007-70225-2](#) [00-054007-70227-6](#) [00-054007-70231-3](#) [00-054007-70241-2](#) [00-054007-70242-9](#) [00-054007-70244-3](#) [00-054007-70246-7](#) [00-054007-70263-4](#) [00-054007-70288-7](#) [00-054007-70290-0](#) [00-054007-70300-6](#) [00-054007-70304-4](#) [01-2065-1-0216](#) [01-2900-1-04412](#) [00581P0075](#) [600TS-10](#) [60205-1](#) [604200-1](#) [605601-1](#) [60598-1-CUT-TAPE](#) [61314-6-C](#) [61810-3](#) [61-S](#) [61-SN](#) [626-0194](#) [62-NBM-A](#) [62-SN](#) [62-SP](#) [63-S](#) [640179-1](#) [M55155/059I03](#) [M55155/079C01](#) [M55155/099H02](#) [M55155/109H01](#) [M55155/109H02](#) [M55155/12XH05](#) [M55155/16XH02](#)