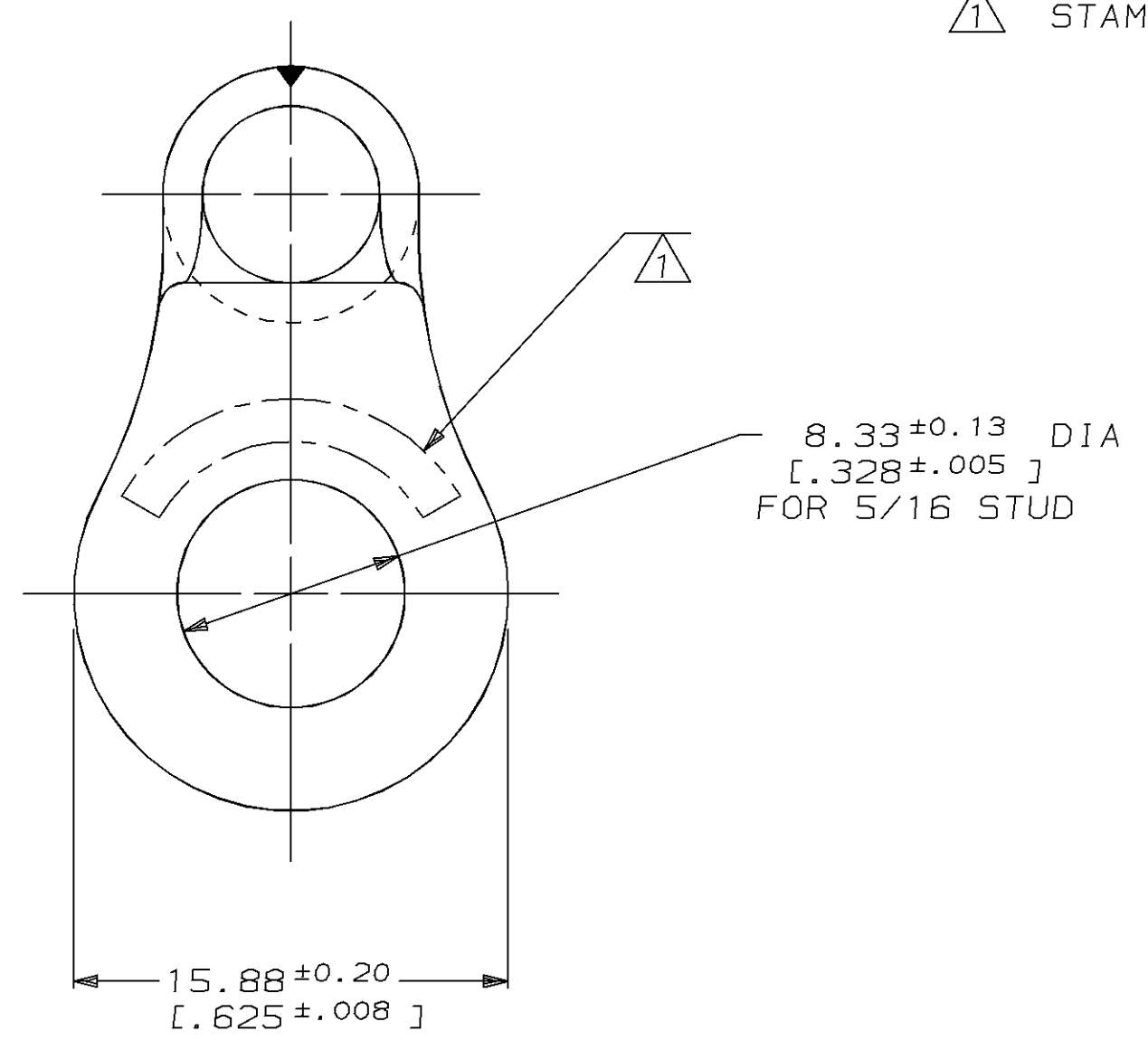
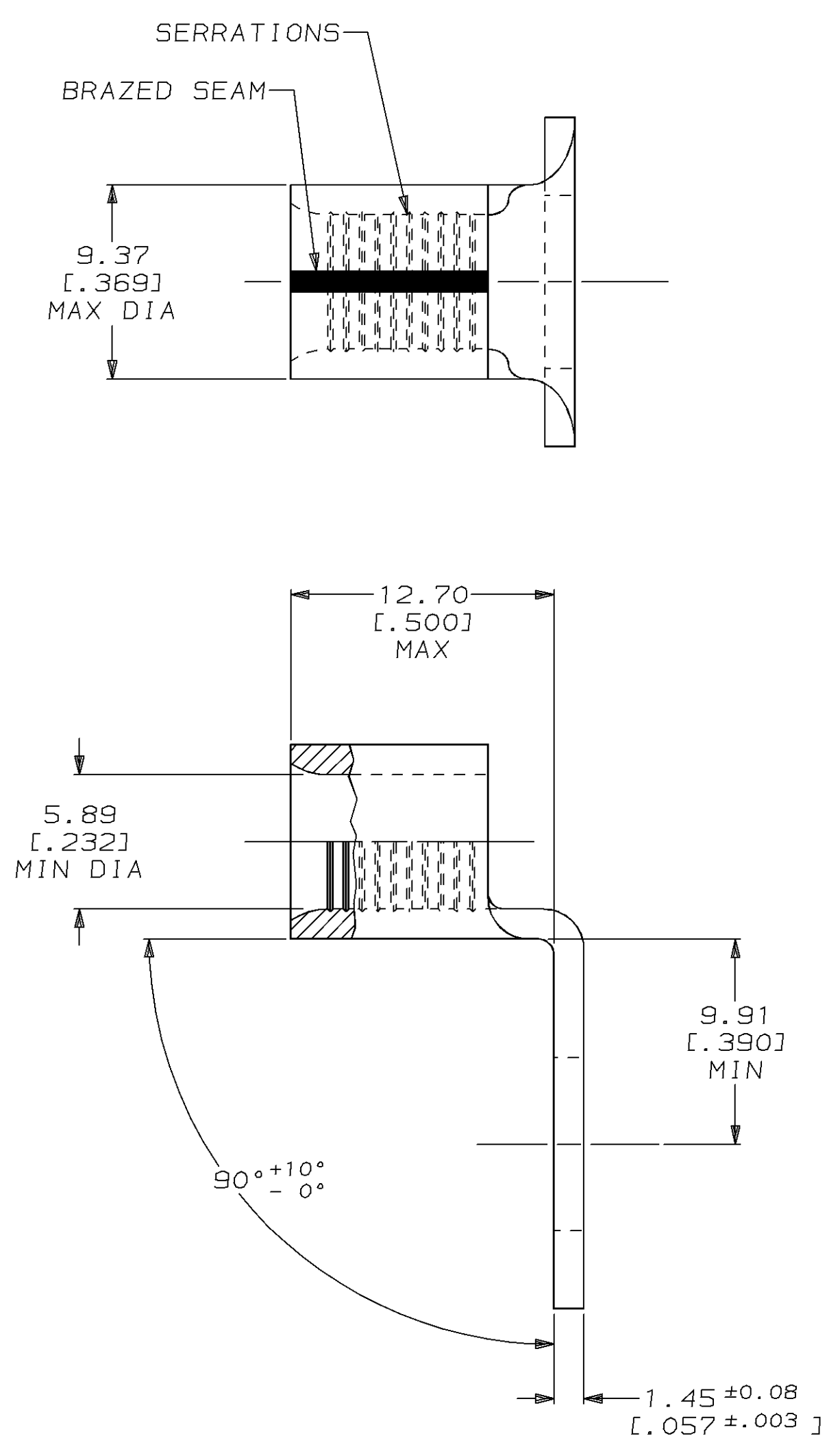


| LOC  |     | DIST        |   | REVISIONS |                                    |         |    | DATE | APPD |
|------|-----|-------------|---|-----------|------------------------------------|---------|----|------|------|
| ZONE | LTR | DESCRIPTION |   | DATE      | APPD                               |         |    |      |      |
| G    | 14  | P           | F | A         | REVISED & REDRAWN PER 0720-0045-94 | 6/13/94 | OK | DAP  |      |

**METRIC**  
 DIMENSIONS LISTED IN mm [ INCHES ]

|                               |                            |
|-------------------------------|----------------------------|
| <b>AMP</b><br>WIRE RANGE      | <b>UL</b> E13288<br>Listed |
| 6 AWG<br>SOLID OR STRANDED    | 6 AWG<br>STRANDED          |
| <b>SR</b> LR7189<br>Certified | MILITARY P/N<br>AND CLASS  |
| 6 AWG<br>SOLID OR STRANDED    | NOT<br>APPLICABLE          |

1 STAMP AMP 6\* APPROX AS SHOWN



|   |  |  |  |                             |  |                        |                         |
|---|--|--|--|-----------------------------|--|------------------------|-------------------------|
| AMP INCORPORATED<br>CUSTOMER SERVICE SYSTEMS  |  | MAX RECOMMENDED OPERATING TEMPERATURE:<br>170°C MAX  | DO NOT SCALE PRINT.<br>UNLESS SPECIFIED<br>DIMENSIONS IN mm [INCHES]<br>TOLERANCES ON:<br>2 PLC DEC ± 0.20 [.008]<br>3 PLC DEC ± -<br>ANGLES ± - | DR 13JUN94<br>DK SCHRUM     | <b>AMP</b> AMP Incorporated<br>Harrisburg, PA 17105-3608 |                        |                         |
| FOR ADDITIONAL<br>PRODUCT INFORMATION OR<br>COPIES OF DRAWINGS<br>AND TECHNICAL DOCUMENTS | PRODUCT INFORMATION CENTER<br>1-800-522-6752 | VOLTAGE RATING:<br>NOT APPLICABLE  | MATERIAL<br>COPPER PER ASTM B-152<br>ANNEALED  | CHK 05AUG94<br>DA PATTERSON | NAME<br>TERMINAL, RING TONGUE,<br>BENT 90°, SOLISTRAND™  |                        |                         |
| FOR APPLICATION<br>TOOLING INFORMATION  | TOOLING ASSISTANCE CENTER<br>1-800-722-1111  | WIRE CROSS SECTIONAL AREA RANGE:<br>10.5-16.8mm² [20,800-33,100] CIR MILS<br>SOLID OR STRANDED   | FINISH<br>TIN PLATE<br>0.00254 [0.000100] MIN<br>THK PER MIL-T-10727   | APPD 05AUG94<br>CH KULYNYCH | SIZE<br>C 00779  | CAGE CODE<br>C=33466-1 | DRAWING NO<br>C=33466-1 |
| FOR ORDER ENTRY   | 1-800-526-5142                               | THIS DRAWING IS A CONTROLLED DOCUMENT FOR<br>AMP INCORPORATED. IT IS SUBJECT TO CHANGE<br>AND THE CONTROLLING ENGINEERING ORGANIZATION<br>SHOULD BE CONTACTED FOR THE LATEST REVISION. | APPLICATION SPEC<br>-  | APPD 05AUG94<br>JL MECKLEY  | SCALE<br>4:1   | SHEET<br>1 OF 1        |                         |

## X-ON Electronics

Largest Supplier of Electrical and Electronic Components

*Click to view similar products for [Terminals](#) category:*

*Click to view products by [TE Connectivity](#) manufacturer:*

Other Similar products are found below :

[00-054007-01074-6](#) [00-054007-70206-1](#) [00-054007-70210-8](#) [00-054007-70217-7](#) [00-054007-70226-9](#) [00-054007-70228-3](#) [00-054007-70248-1](#) [00-054007-70256-6](#) [00-054007-70301-3](#) [00-054007-70316-7](#) [0-0320562-0](#) [00-054007-49560-4](#) [00-054007-70209-2](#) [00-054007-70225-2](#) [00-054007-70227-6](#) [00-054007-70231-3](#) [00-054007-70241-2](#) [00-054007-70242-9](#) [00-054007-70244-3](#) [00-054007-70246-7](#) [00-054007-70263-4](#) [00-054007-70288-7](#) [00-054007-70290-0](#) [00-054007-70300-6](#) [00-054007-70304-4](#) [01-2065-1-0216](#) [01-2900-1-04412](#) [00581P0075](#) [600TS-10](#) [60205-1](#) [604200-1](#) [605601-1](#) [60598-1-CUT-TAPE](#) [61314-6-C](#) [61810-3](#) [61-S](#) [61-SN](#) [626-0194](#) [62-NBM-A](#) [62-SN](#) [62-SP](#) [63-S](#) [640179-1](#) [M55155/059I03](#) [M55155/079C01](#) [M55155/099H02](#) [M55155/109H01](#) [M55155/109H02](#) [M55155/12XH05](#) [M55155/16XH02](#)