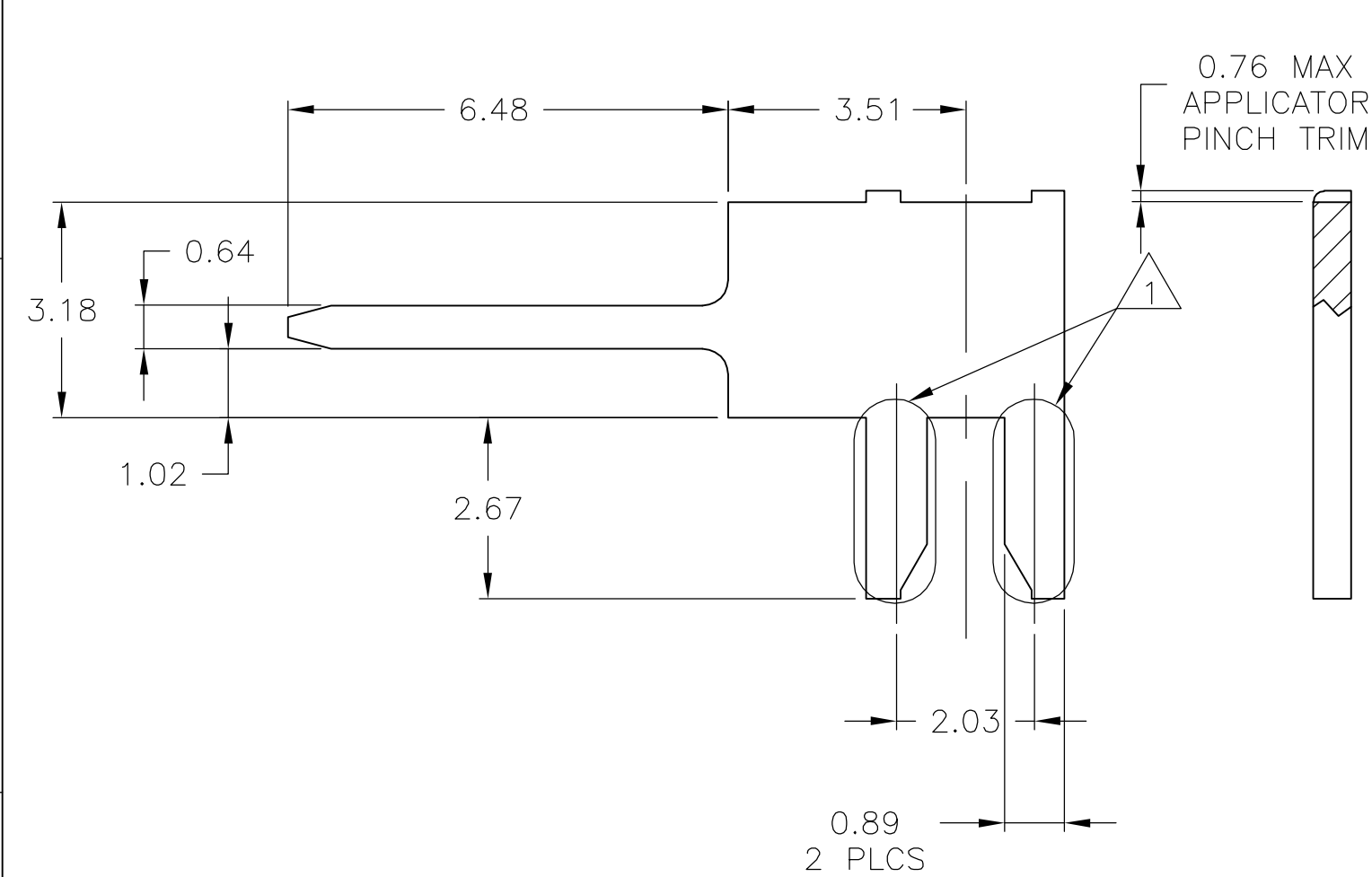
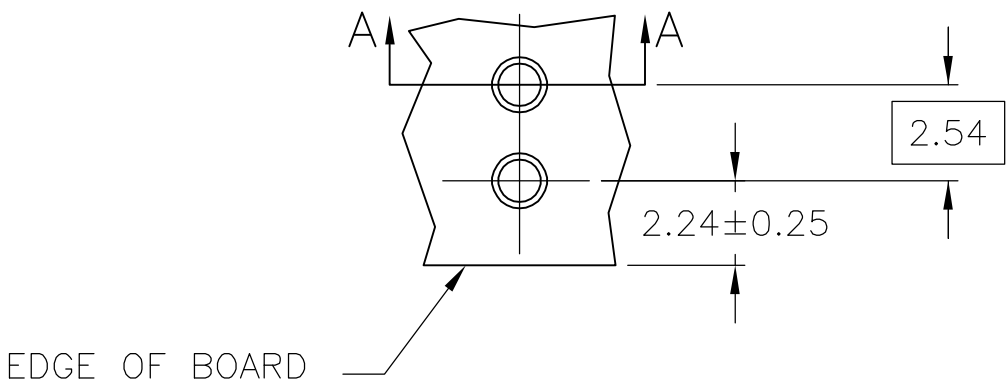
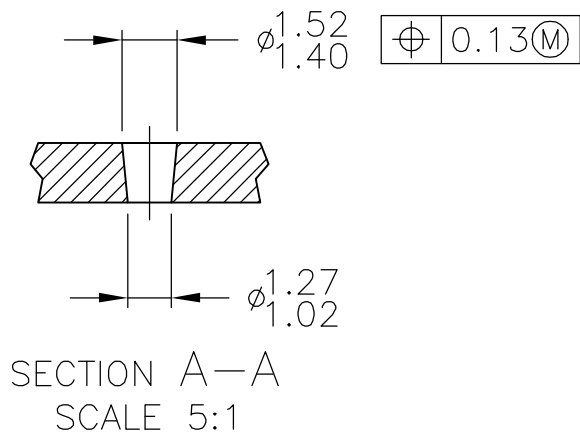


2			1				
LOC	DIST	REVISIONS					
CM	45	P	LTR	DESCRIPTION	DATE	DWN	APVD
			H1	ECO-05-013104	27JAN06	BSV	DB



1 SOLDERABILITY TO BE CHECKED IN THIS AREA.



RECOMMENDED MOUNTING HOLE PATTERN
FOR 1.57 THICK P.C. BOARD
SCALE 5:1

1.40	.055	-	-
1.27	.050	6.48	.255
1.02	.040	3.51	.138
0.89	.035	3.18	.125
0.76	.030	2.67	.105
0.64	.025	2.54	.100
0.56	.022	2.24	.088
0.38	.015	2.03	.080
0.25	.010	1.57	.062
0.13	.005	1.52	.060
MM	IN	MM	IN
CONVERSION TABLE			

METRIC

109-11-5	0.56 BRASS	BRIGHT TIN OVER NICKEL	3-350508-1
109-11-5	0.56 BRASS	BRIGHT TIN-LEAD OVER NICKEL	350508-1
SOLDERABILITY SPEC	MATERIAL	FINISH	PART NO
THIS DRAWING IS A CONTROLLED DOCUMENT.		DWN R. VESTAL	10FEB94
		CHK R. SWING	10FEB94
DIMENSIONS: mm		APVD E. BEILES	10FEB94
		PRODUCT SPEC	
TOLERANCES UNLESS OTHERWISE SPECIFIED:		APPLICATION SPEC	
		WEIGHT	-
MATERIAL SEE TABLE		FINISH	SEE TABLE
		CUSTOMER DRAWING	
0 PLC ± - 1 PLC ± - 2 PLC ± 0.38 3 PLC ± - 4 PLC ± - ANGLES ± 1-0		SIZE A3	CAGE CODE 00779
		DRAWING NO C-350508	RESTRICTED TO -
		SCALE 10:1	SHEET 1 OF 1
		REV H1	

X-ON Electronics

Largest Supplier of Electrical and Electronic Components

Click to view similar products for [DIN 41612 Connectors](#) category:

Click to view products by [TE Connectivity](#) manufacturer:

Other Similar products are found below :

[004.767](#) [608489050008049](#) [691327-1](#) [74670-0732](#) [74680-0340](#) [75880-0015](#) [76453-0014](#) [86093159ALF](#) [9732967801](#) [QLC260R](#)
[120X10019X](#) [120X10089X](#) [122A10249X](#) [122A11089X](#) [122A13089X](#) [122A10089X](#) [122A10129X](#) [122A10349X](#) [122A13359X](#) [1377391-4](#)
[DIN-048CPC-SR1-MH](#) [1393583-2](#) [1393726-7](#) [140X10129X](#) [143-1913-000](#) [143-1908-000](#) [1484472-1](#) [2110070-1](#) [2110070-2](#) [CBC20T00-](#)
[008FDS5-0-1-002VR](#) [172699-5036](#) [2-1393557-4](#) [2-1437084-2](#) [394506](#) [419-2080-402](#) [V42254B2202C968](#) [419-2086-201](#) [419-2087-002](#)
[448657-1](#) [448847-3](#) [5-1393755-9](#) [029900000004](#) [054302](#) [043556](#) [09062483201750](#) [0850033067](#) [09031646555](#) [09061486901840](#)
[09185107324800](#) [102A10019X](#)