

4

3

2

1

THIS DRAWING IS UNPUBLISHED.

RELEASED FOR PUBLICATION

© COPYRIGHT

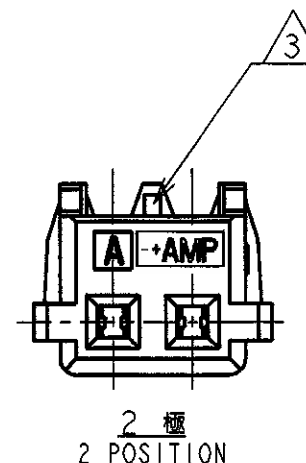
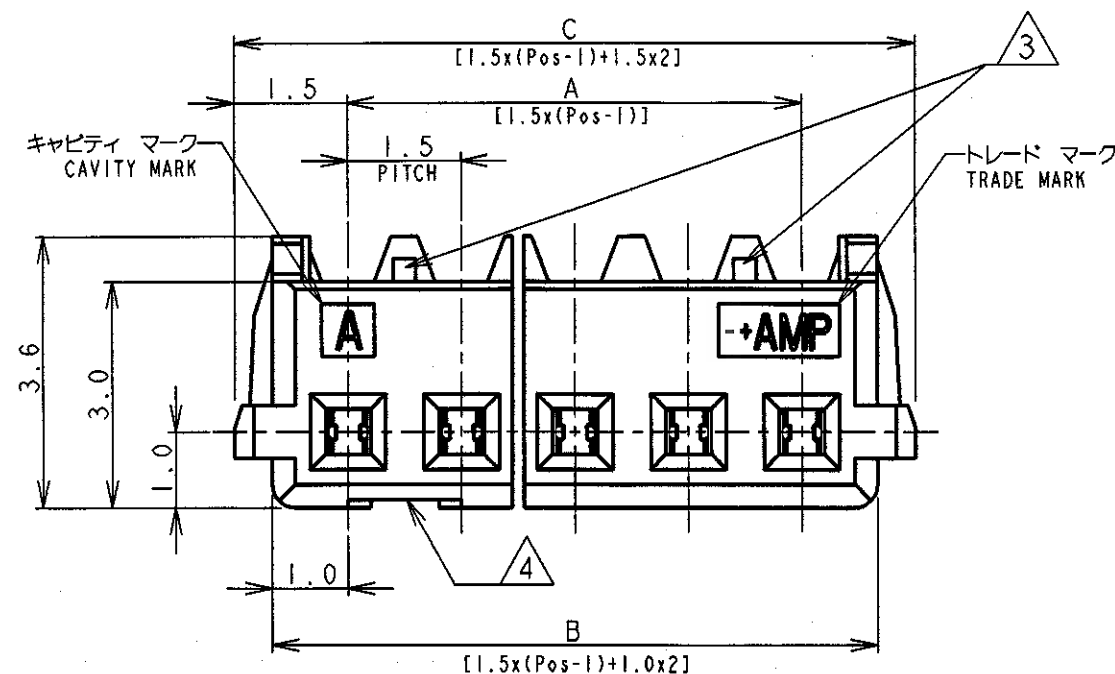
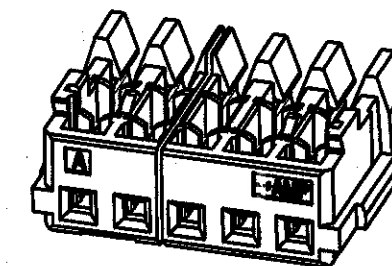
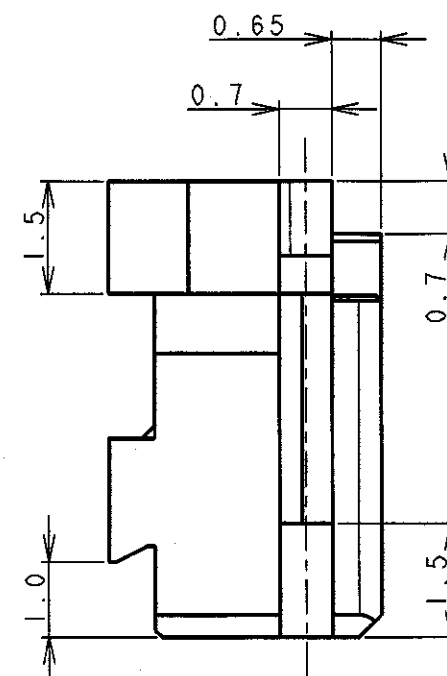
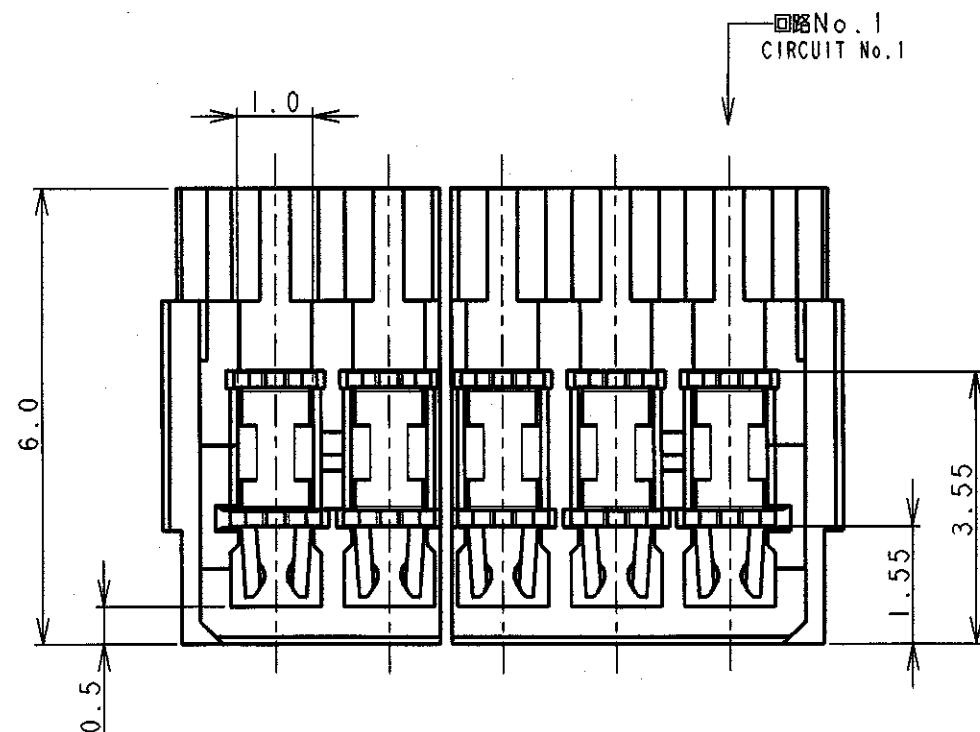
ALL RIGHTS RESERVED.

LOC

DIST

REVISIONS

P	LTR	DESCRIPTION	DATE	DWN	APVD
E4		REVISED ECR-21-107353	14JUL21	T.Q	N.S


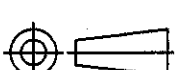


注 記

- 適用電線範囲: AWG #26&#28  
被覆外径:  $\phi 0.8\text{mm} \sim \phi 0.95\text{mm}$
- 材料: ハウジング-ガラス入りナイロン UL94V-0、色: グレー、青  
コンタクト-錫めっき済み、りん青銅
- ハウジング ロック:  
2極は、1箇所 3~20極は、2箇所
- ゲート口は左付きと右付きが存在する。(2極品を除く)

NOTES:

- APPLICABLE WIRE SIZE: AWG #26&#28  
INSULATION DIA RANGE:  $\phi 0.8\text{mm} \sim \phi 0.95\text{mm}$
- MATERIAL:  
HOUSING: NYLON(G.F.) UL94V-0, COLOR: GRAY, BLUE  
CONTACT: PRE-TIN PHOS-BRONZE
- HOUSING LOCK:  
2 POSITION - SINGLE LOCK  
3 TO 20 POSITIONS - DOUBLE LOCK
- CONNECTOR HAVE THE GATE LEFT SIDE AND RIGHT SIDE. (EXCEPT 2Pos.)

		DWN T. FURUYA 12. JUL '96	 TE Connectivity				
		CHK J. TANIGAWA 12. JUL '96					
DIMENSIONS: 単位: 毫 mm	TOLERANCES UNLESS OTHERWISE SPECIFIED	APVD <i>S. Kurokuchi 9/15 99</i>	NAME 名称				
	一般公差 10mm ±0.2 30mm >10 ±0.25 100mm >30 ±0.3 ANGLE ±3°	PRODUCT SPEC 製品規格 108-5525	AMP Mini Common Terminated (CT) Connector 1.5mm PITCH				
		APPLICATION SPEC 取付適用規格 114-5223	MT RECEPTACLE ASSEMBLY				
		WEIGHT SEE TABLE 表参照	SIZE A3	CAGE CODE 00779	DRAWING NO 番号 C-353293		
MATERIAL 材料 SEE NOTE 2 注記2参照	FINISH 仕上 SEE NOTE 2 注記2参照	CUSTOMER DRAWING			SCALE 尺度 NON	SHEET 1 OF 2	REV E4

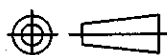
LOC	DIST	REVISIONS			
P	LTR	DESCRIPTION	DATE	DWN	APVD
		SEE SHEET 1			

0.97	31.5	30.5	28.5	20	7-353293-0	4-353293-0	2-353293-0
0.92	30.0	29.0	27.0	19	6-353293-9	3-353293-9	1-353293-9
0.87	28.5	27.5	25.5	18	6-353293-8	3-353293-8	1-353293-8
0.83	27.0	26.0	24.0	17	6-353293-7	3-353293-7	1-353293-7
0.78	25.5	24.5	22.5	16	6-353293-6	3-353293-6	1-353293-6
0.73	24.0	23.0	21.0	15	6-353293-5	3-353293-5	1-353293-5
0.68	22.5	21.5	19.5	14	6-353293-4	3-353293-4	1-353293-4
0.64	21.0	20.0	18.0	13	6-353293-3	3-353293-3	1-353293-3
0.59	19.5	18.5	16.5	12	6-353293-2	3-353293-2	1-353293-2
0.54	18.0	17.0	15.0	11	6-353293-1	3-353293-1	1-353293-1
0.49	16.5	15.5	13.5	10	6-353293-0	3-353293-0	1-353293-0
0.45	15.0	14.0	12.0	9	5-353293-9	2-353293-9	353293-9
0.40	13.5	12.5	10.5	8	5-353293-8	2-353293-8	353293-8
0.35	12.0	11.0	9.0	7	5-353293-7	2-353293-7	353293-7
0.30	10.5	9.5	7.5	6	5-353293-6	2-353293-6	353293-6
0.26	9.0	8.0	6.0	5	5-353293-5	2-353293-5	353293-5
0.21	7.5	6.5	4.5	4	5-353293-4	2-353293-4	353293-4
0.16	6.0	5.0	3.0	3	5-353293-3	2-353293-3	353293-3
0.11	4.5	3.5	1.5	2	5-353293-2	2-353293-2	353293-2
WEIGHT (g)	C	B	A	Pos.	BLUE	BLACK	GRAY
	寸 法 DIMENSIONS				製品型番 P/N		

DIMENSIONS:  
単位: ㎜  
mm

TOLERANCES UNLESS  
OTHERWISE SPECIFIED:

一般公差  
10 ± : ±0.2  
30 ± : ±0.25  
100 ± : ±0.3  
ANGLE : ±3°



DWN T. FURUYA 12. JUL '96

CHK J. TANIGAWA 12. JUL '96

APVD

PRODUCT SPEC

製品規格

108-5525

APPLICATION SPEC

取付適用規格

114-5223

WEIGHT SEE TABLE 表参照

CUSTOMER DRAWING

WIRE RANGE

絶縁電線断面積

0.08mm<sup>2</sup>-0.14mm<sup>2</sup>

INSULATION DIA

被覆外径

∅0.8mm-∅0.95mm

MATERIAL SEE SHEET 1 OF 2

材料

1枚目参照

FINISH

仕上

SEE SHEET 1 OF 2

1枚目参照



TE Connectivity

NAME

名称

AMP Mini Common Terminated (CT) Connector 1.5mm PITCH

MT RECEPTACLE ASSEMBLY

SIZE

CAGE CODE

DRAWING NO

番号

A4

00779

C=353293

SCALE

尺度

NON

SHEET

2

OF

2

REV

E4

## X-ON Electronics

Largest Supplier of Electrical and Electronic Components

*Click to view similar products for* [Headers & Wire Housings](#) *category:*

*Click to view products by* [TE Connectivity](#) *manufacturer:*

Other Similar products are found below :

[57102-F02-18ULF](#) [58102-G61-06LF](#) [582553-1](#) [009176003701906](#) [0050291907](#) [02.125.8002.8](#) [609-3404](#) [61062-3](#) [622-0430](#) [622-3653LF](#)  
[63453-116](#) [636-1030](#) [636-1427](#) [636-3427](#) [636-4007](#) [641938-9](#) [65495-038](#) [65692-001LF](#) [65781-018](#) [65781-047](#) [65817-010LF](#) [65817-015LF](#)  
[66207-023LF](#) [67016-026LF](#) [67095-007LF](#) [68631-112](#) [68645-018](#) [68648-049](#) [699319-000](#) [M90C108951C](#) [70.362.1628.0](#) [70-4210](#) [70-4226B](#)  
[70-4853B](#) [707-5020](#) [707-5028](#) [71.350.2428.0](#) [71961-016LF](#) [733-134](#) [754199-000](#) [760-3052](#) [787-8014-00](#) [FCN-367T-T012/H](#)  
[80.063.4001.1](#) [800-90-001-10-001000](#) [801-43-002-10-013000](#) [801-43-006-10-002000](#) [803-41-018-10-001000](#) [803-43-014-20-001000](#)  
[803-43-024-10-001000](#)