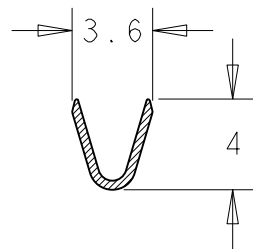
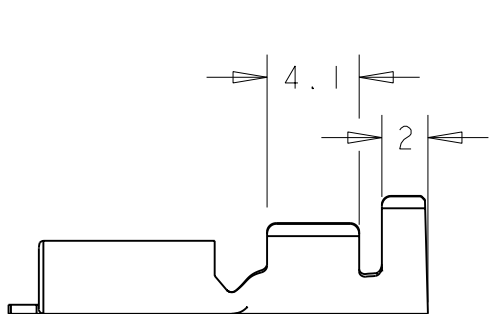
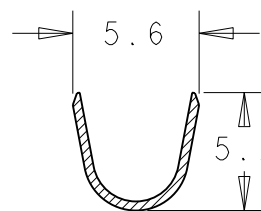
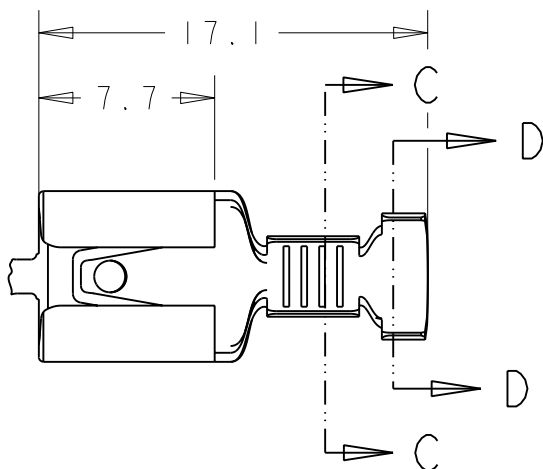


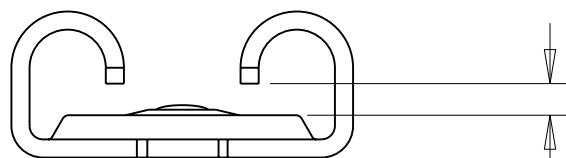
LOC	DIST	REVISIONS REVISIONES					
AL	2	P	LTR	DESCRIPTION DESCRIPCION	DATE FECHA	DWN DIB	APVD APR
			B	ES00-0007-02	24JAN02	A.H.	J.L.
			C	ES00-0133-03	08JAN04	J.L.	J.L.
			D	ET00-0026-05	29MAR05	A.V	G.T
			DI	REVISED PER ECO-09-025699	19DEC09	KK	AEG



SECTION C-C



SECTION D-D SCALE 6:1



PARA LENGÜETA CON AGUJERO DE 0,8 mm  
DE ESPESOR  
FOR TAB WITH HOLE OF 0.8 mm THICKNESS

NOTES: -

1 OBSOLETE PARTS: OBSOLETE CIS  
STREAMLINING PER  
D. RENAUD/D. SINISI

1 GAMA DE HILO: 1,0 - 2,5 mm<sup>2</sup> ; GAMA DE AISLANTE: 3,0 - 4,3 mm  
1 WIRE RANGE: 1.0 - 2.5 mm<sup>2</sup> ; ISULATION RANGE: 3.0 - 4.3 mm

-5	ACERO STEEL	PRENIQUELADO PRENI	
-4	BRONCE BRONZE	-	OBSOLETE 1
-3	LATON BRASS	PREESTANADO PRE TIN	
-2	LATON BRASS	ESTANADO TIN PLATED	OBSOLETE
-1	LATON BRASS	-	
GUION DASH	MATERIAL	ACABADO FINISH	

2009  
 RELEASED FOR PUBLICATION  
 LIBRE DE SER PUBLICADO  
 BY TYCO ELECTRONICS CORPORATION ALL INTERNATIONAL RIGHTS RESERVED.  
 LOS PRODUCTOS AMP ESTAN CUBIERTOS POR PATENTES ACTUALES O PENDIENTES  
 THIS DRAWING IS UNPUBLISHED.  
 PLANO NO PUBLICADO  
 COPYRIGHT 2009

DIMENSIONS: MEDIDAS, mm	DWN/DIB A. ALONSO 18FEB97	MATERIAL	TABLE	FINISH ACABADO	TABLE
TOLERANCES UNLESS OTHERWISE SPECIFIED: TOLERANCIAS POR OMISION	CHK/COMP J. LAZARO 30.9.97	Tyco Electronics Tyco Electronics AMP España, S.A. Barcelona. Spain.			
0 PLC/LUG ±0.4 1 PLC/LUG ±0.13 2 PLC/LUG ±0.13 3 PLC/LUG ±0.13 4 PLC/LUG ±0.0001 ANGLES/ANGULOS ±	APVD/APR - 11OCT00	PRODUCT SPEC ESPEC PRODUCTO 108-22021 -1to-4 108-22080 -5	NAME TITULO RECEPTACULO FASTON 6,35 FASTON RECEPTACLE 6.35		
	APPLICATION SPEC ESPEC APLICACION 114-2036	SIZE TAM A4	CAGE CODE CODIGO 00779	DRAWING NO PLANO NO C-336236	RESTRICTED TO RESTRINGIDO A -
	WEIGHT PESO -	CUSTOMER DRAWING / PLANO DE CLIENTE			
		SCALE ESCALA 3:1	SHEET HOJA 1	OF DE 1	REV DI

## X-ON Electronics

Largest Supplier of Electrical and Electronic Components

*Click to view similar products for [Terminals](#) category:*

*Click to view products by [TE Connectivity](#) manufacturer:*

Other Similar products are found below :

[00-054007-01074-6](#) [00-054007-70206-1](#) [00-054007-70210-8](#) [00-054007-70217-7](#) [00-054007-70226-9](#) [00-054007-70228-3](#) [00-054007-70248-1](#) [00-054007-70256-6](#) [00-054007-70301-3](#) [00-054007-70316-7](#) [00-054007-49560-4](#) [00-054007-70209-2](#) [00-054007-70225-2](#) [00-054007-70227-6](#) [00-054007-70231-3](#) [00-054007-70241-2](#) [00-054007-70242-9](#) [00-054007-70244-3](#) [00-054007-70246-7](#) [00-054007-70263-4](#) [00-054007-70288-7](#) [00-054007-70290-0](#) [00-054007-70300-6](#) [00-054007-70304-4](#) [01-2065-1-0216](#) [01-2900-1-04412](#) [00581P0075](#) [600TS-10](#) [60205-1](#) [604200-1](#) [605601-1](#) [60598-1-CUT-TAPE](#) [61314-6-C](#) [61810-3](#) [61-S](#) [61-SN](#) [626-0194](#) [62-NBM-A](#) [62-SN](#) [62-SP](#) [63-S](#) [640179-1](#) [M55155/059I03](#) [M55155/079C01](#) [M55155/099H02](#) [M55155/109H01](#) [M55155/109H02](#) [M55155/12XH05](#) [M55155/16XH02](#) [M55155/29-5S](#)