

4

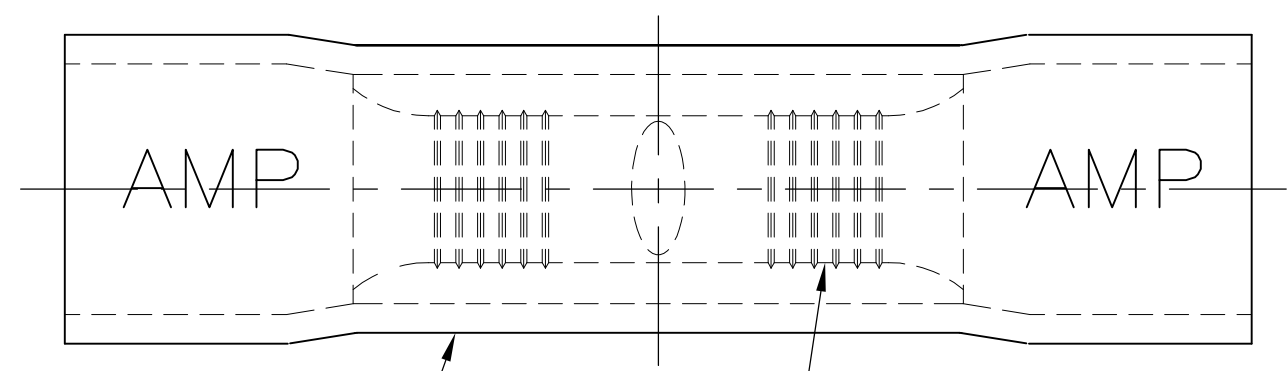
3

2

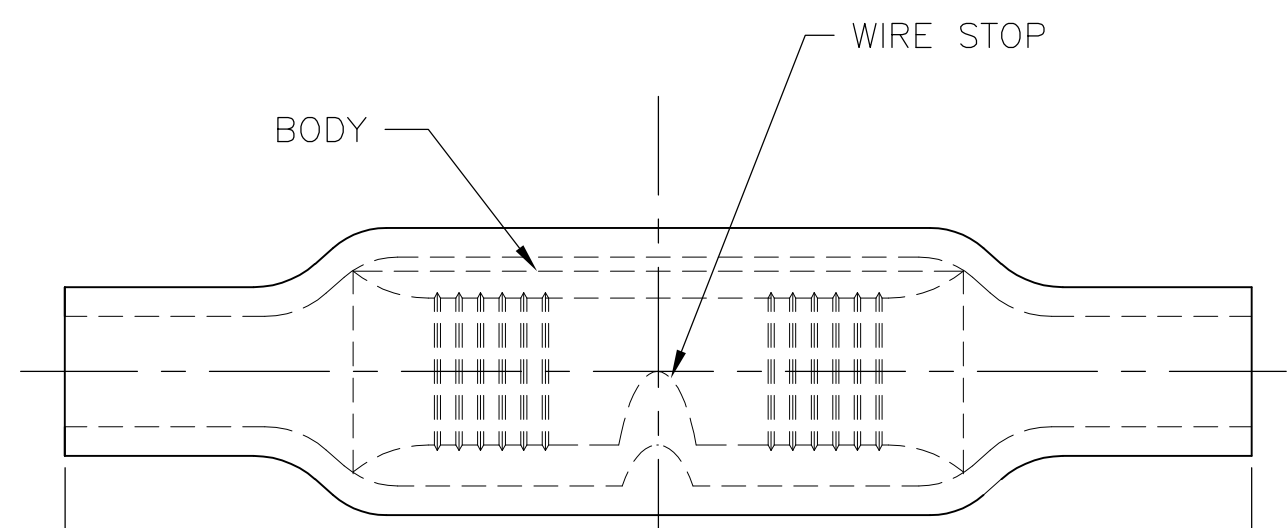
1

THIS DRAWING IS UNPUBLISHED. RELEASED FOR PUBLICATION
 © COPYRIGHT - By - ALL RIGHTS RESERVED.

LOC		DIST		REVISIONS			
P	LTR	DESCRIPTION		DATE	DWN	APVD	
	G1	REDRAW PER ECO-11-020548		02FEB12	KH	DR	



INSULATION SERRATIONS



26.16±0.89
 [1.030±.035]

1 FOR 6.22[.245] X 3.43[.135] MAX OVALED WIRE INSULATION DIA

QTY	PACKAGE TYPE	MATERIAL & FINISH	PART NO
2000	ON TAPE	INSULATION: PVC COLOR: BLUE BODY: COPPER PER ASTM B152 TIN PLATE PER ASTM B545	1-34204-0
100	LOOSE PC,BOX		8-34204-1
1000	LOSE PIECE		34204

THIS DRAWING IS A CONTROLLED DOCUMENT.		DWN KIRAN HOLAL 02FEB12	STE TE Connectivity		
DIMENSIONS: mm [INCHES]		CHK ROHDE DANIEL 02FEB12			
TOLERANCES UNLESS OTHERWISE SPECIFIED:		APVD ROHDE DANIEL 02FEB12	NAME		
0 PLC ± -		PRODUCT SPEC	WIRE SPLICE PLASTI-GRIP-BUTT-OVALED		
1 PLC ± -		APPLICATION SPEC	WIRE SIZE:16-14		
2 PLC ± -		WEIGHT	SIZE	CAGE CODE	DRAWING NO
3 PLC ± -		-	A3	00779	C-34204
4 PLC ± -					
ANGLES ± -		CUSTOMER DRAWING		SCALE	SHEET
FINISH		-		6:1	1 OF 1
MATERIAL		-		REV	G1

X-ON Electronics

Largest Supplier of Electrical and Electronic Components

Click to view similar products for [Terminals](#) category:

Click to view products by [TE Connectivity](#) manufacturer:

Other Similar products are found below :

[00-054007-01074-6](#) [00-054007-70206-1](#) [00-054007-70210-8](#) [00-054007-70217-7](#) [00-054007-70226-9](#) [00-054007-70228-3](#) [00-054007-70248-1](#) [00-054007-70256-6](#) [00-054007-70301-3](#) [00-054007-70316-7](#) [0-0320562-0](#) [00-054007-49560-4](#) [00-054007-70209-2](#) [00-054007-70225-2](#) [00-054007-70227-6](#) [00-054007-70231-3](#) [00-054007-70241-2](#) [00-054007-70242-9](#) [00-054007-70244-3](#) [00-054007-70246-7](#) [00-054007-70263-4](#) [00-054007-70288-7](#) [00-054007-70290-0](#) [00-054007-70300-6](#) [00-054007-70304-4](#) [01-2065-1-0216](#) [01-2900-1-04412](#) [00581P0075](#) [600TS-10](#) [60205-1](#) [604200-1](#) [605601-1](#) [60598-1-CUT-TAPE](#) [61314-6-C](#) [61810-3](#) [61-S](#) [61-SN](#) [626-0194](#) [62-NBM-A](#) [62-SN](#) [62-SP](#) [63-S](#) [640179-1](#) [M55155/059I03](#) [M55155/079C01](#) [M55155/099H02](#) [M55155/109H01](#) [M55155/109H02](#) [M55155/12XH05](#) [M55155/16XH02](#)