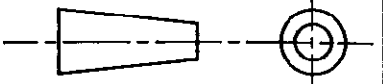
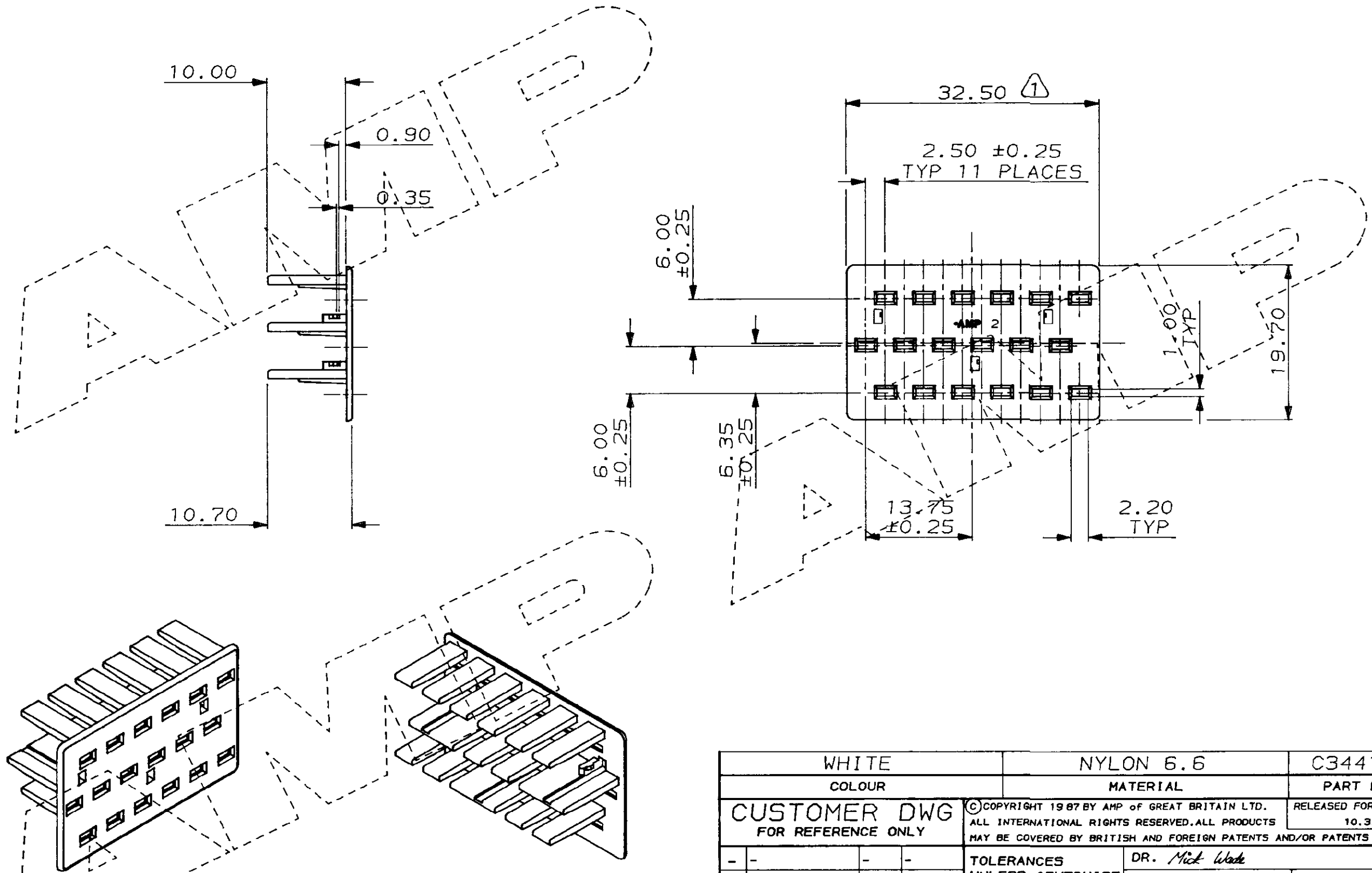


8 7 6 5 4 3 2 1

DO NOT SCALE DIMENSIONS IN MM.



C.A.D. FILE CODE  
S.C344107.C



NOTES:

1. THIS IS TO BE A CONTROL DIMENSION MONITORED AT AMP

WHITE		NYLON 6.6		C344107-1					
COLOUR		MATERIAL		PART NUMBER					
CUSTOMER DWG FOR REFERENCE ONLY			© COPYRIGHT 1987 BY AMP OF GREAT BRITAIN LTD. ALL INTERNATIONAL RIGHTS RESERVED. ALL PRODUCTS MAY BE COVERED BY BRITISH AND FOREIGN PATENTS AND/OR PATENTS PENDING.		RELEASED FOR PUBLICATION 10.3.87				
-	-	-	-	TOLERANCES UNLESS OTHERWISE STATED, DEC ± 0.50 ANGLES ± 1°	DR. Mick Wade 27-5-87				
-	-	-	-		CH. RJS 24-6-87 APP. RJS 24-6-87				
C	CONTROL DIMENSION AND NOTE ADDED	C5278	22-05-89	<b>AMP</b> TERMINAL HOUSE STANMORE MIDDX. of Great Britain Ltd.					
B	SECOND IMPRESSION RELEASED TO CUSTOMER	C5138	07-12-88						
A	DIMENSIONS ADDED	C5013	25-7-88						
D	RELEASE FOR PROO.	C4886	7-3-88						
REV	APPROVED	ECN	DATE	SCALE	LOC	SIZE	DWG.No.	REV	SHEET
				2/1	E	A3	C344107	C	1/1

WAS CP86-076-11

## X-ON Electronics

Largest Supplier of Electrical and Electronic Components

*Click to view similar products for [Automotive Connectors](#) category:*

*Click to view products by [TE Connectivity](#) manufacturer:*

Other Similar products are found below :

[003-018-000](#) [60403001](#) [60993906-B](#) [M902-2131](#) [M902-2161](#) [72.330.1035.1](#) [73.353.4028.0](#) [F119300-B](#) [F166900](#) [F258300-B](#) [F358300-B](#)  
[F407400](#) [F444110](#) [F487000](#) [F509500B-B](#) [827153-1](#) [8N1515-32-24P](#) [9-1326729-8](#) [925474-1](#) [928905-1](#) [964562-4](#) [968782-1](#) [GT17SA-8DS-](#)  
[HU](#) [98891-1012](#) [98947-1016](#) [12004147](#) [12004475-L](#) [12010290](#) [12010309-B](#) [12015454](#) [12020219-B](#) [12020308](#) [12041318-B](#) [12052225-L](#)  
[12052466](#) [12059125](#) [12064869](#) [12004327-B](#) [12010503-B](#) [12015308](#) [12015384](#) [12015909](#) [1-21030-1](#) [12041254](#) [12041318](#) [12047946-B](#)  
[12047957](#) [12047957-L](#) [12059473](#) [12066261](#)