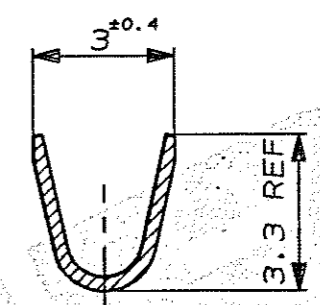
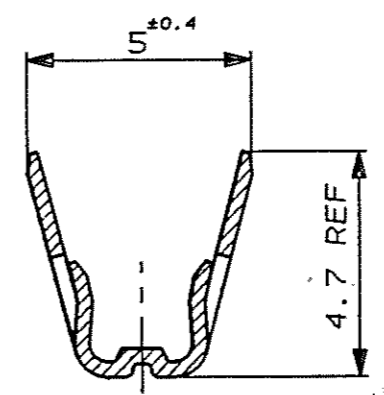
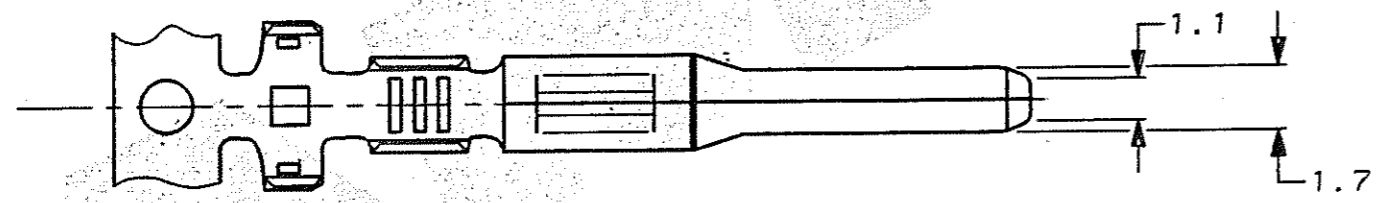


C.A.D. FILE CODE
5. C345212.A

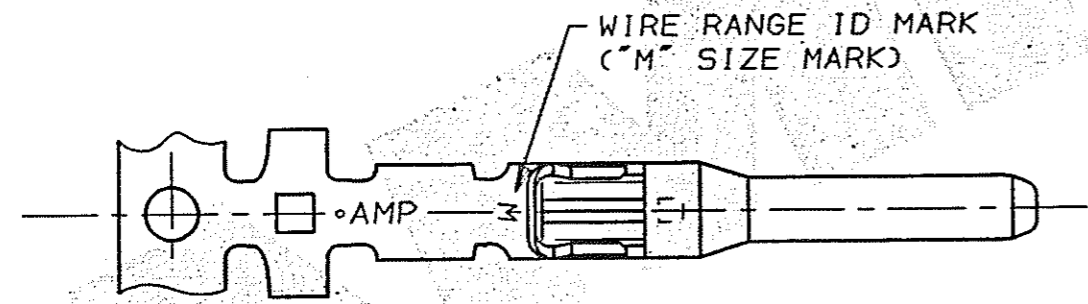
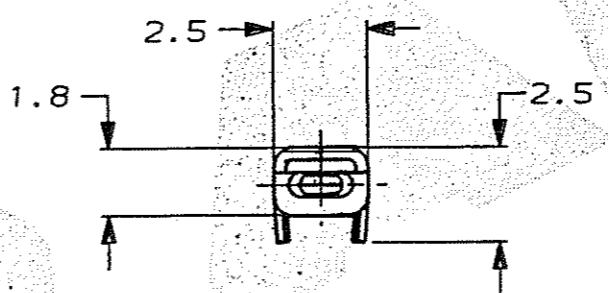
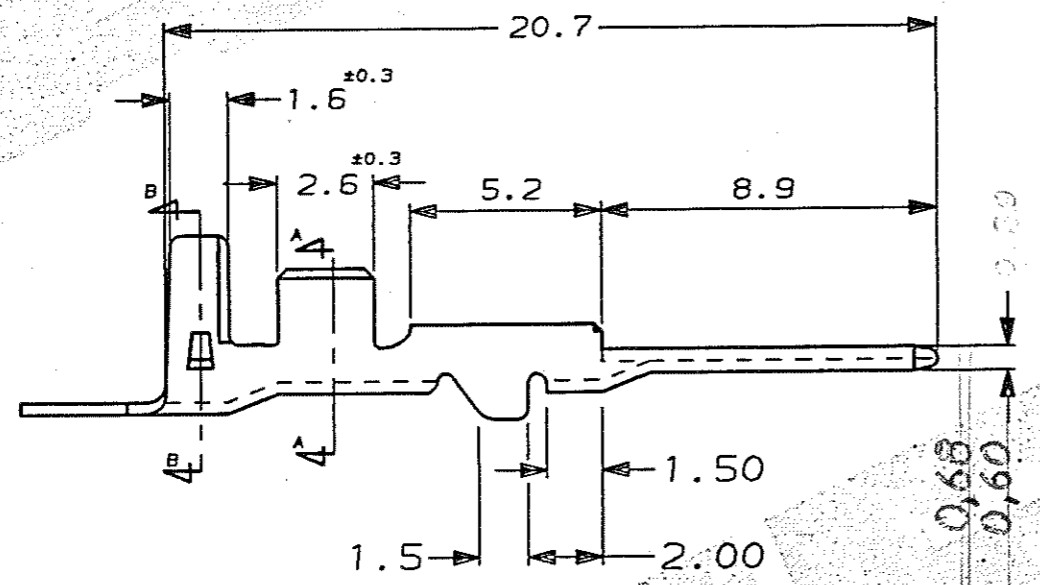
DO NOT SCALE

DIMENSIONS IN MM.



SECT B-B

SECT A-A



NOTES:-

1. WIRE DETAILS:- 0.75-1.5mm², 1.7-2.4 INSULATION DIA.
2. SIMILAR TO PART NUMBER 173645.

PRE-TIN		BRASS		345212-1	
FINISH		MATERIAL		PART NUMBER	
CUSTOMER DWG FOR REFERENCE ONLY			© COPYRIGHT 1991 BY AMP OF GREAT BRITAIN LTD. ALL INTERNATIONAL RIGHTS RESERVED. ALL PRODUCTS MAY BE COVERED BY BRITISH AND FOREIGN PATENTS AND/OR PATENTS PENDING.		
-		TOLERANCES UNLESS OTHERWISE STATED :		DR. D.R. TERRY 16 OCT 1991	
-		DEC ± 0.5		CH. M MISTRY APP. M MISTRY	
-		ANGLES ± 1°		AMP of Great Britain Ltd. TERMINAL HOUSE STANMORE MIDD.	
A EB00-0191-02		- 1-7-02		NAME .070 SERIES TAB CONTACT, MULTI-LOCK	
O RELEASE FOR PROD. C6323		24-8-92		SCALE LOC SIZE DWG.No.	
I M.MISTRY		16-10-91		5/1 E A3 C345212	
REV APPROVED		ECN DATE		REV SHEET A 1/1	

X-ON Electronics

Largest Supplier of Electrical and Electronic Components

Click to view similar products for [Automotive Connectors](#) category:

Click to view products by [TE Connectivity](#) manufacturer:

Other Similar products are found below :

[003-018-000](#) [60403001](#) [60993906-B](#) [M902-2131](#) [M902-2161](#) [M902-2344](#) [72.330.1035.1](#) [73.353.4028.0](#) [F119300-B](#) [F166900](#) [F258300-B](#)
[F358300-B](#) [F407400](#) [F444110](#) [F487000](#) [F509500B-B](#) [827153-1](#) [8N1515-32-24P](#) [9-1326729-8](#) [925474-1](#) [928905-1](#) [964562-4](#) [968782-1](#)
[GT17SA-8DS-HU](#) [98891-1012](#) [98947-1016](#) [12004147](#) [12004475-L](#) [12010290](#) [12010309-B](#) [12015454](#) [12020219-B](#) [12041318-B](#) [12052225-](#)
[L](#) [12052466](#) [12064869](#) [12004327-B](#) [12015308](#) [12015384](#) [12015909](#) [1-21030-1](#) [12041254](#) [12041318](#) [12047946-B](#) [12047957](#) [12047957-L](#)
[12059473](#) [12066261](#) [12110546](#) [12110546-B](#)