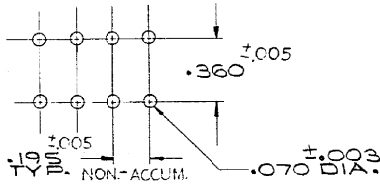
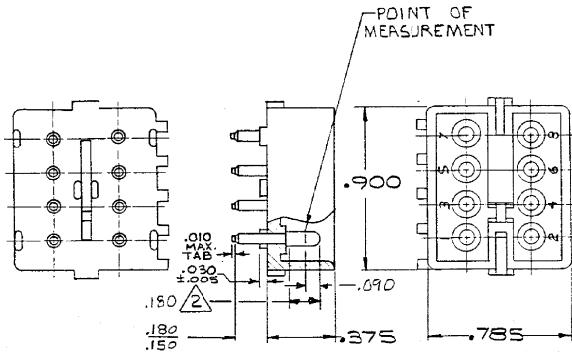


DRAWING MADE IN AMERICAN PROJECTION



RECOMMENDED LAYOUT
TO .062 THICK P.C. BOARD

1. PARTS COMPLY WITH TE SOLDERABILITY SPEC. NO. 109-11-3

CONTACT IS PLATED OVERALL WITH .00050 NICKEL, THEN .00030 GOLD OVER CONTACT LENGTH INDICATED, AND ITIN PLATED ON SOLDER TAIL END.

SUPERSEDED BY
1586518-2

350212-2	NYLON	NATURAL	COPPER ALLOY	GOLD
350212-1	NYLON - NATURAL	COPPER ALLOY	PRE-TIN	
ASSEMBLY NO. HGS. MATL.- COLOR PIN MATL.- FINISH				

PRINT CASE DIMENSIONS IN INCHES. DO NOT SCALE PRINT.

P2	REVISED PER ECR-18-006130	JB	DZ	19 JUN 2018
P1	REVISED PER ECR-13-008342	AV	RP	13 NOV 2013
P	OBS 1-1 2--1 9--1 PER ECR CM-2706	NG	RS	8 APR 87
N	OBS 5-1 8--1 PER CM 2213	FB	CB	28 FEB 81
LTR	REVISION RECORD	DR	CHK	DATE

DWG SIZE		NUMBER	NAME	REMARKS	ITEM NO.
REQUIRED PER ASSEMBLY		© 1978 BY AMP INCORPORATED. ALL RIGHTS RESERVED. AMP PRODUCTS COVERED BY PATENTS AND/OR PATENTS PENDING.			CUSTOMER COPY REFERENCE ONLY
DR	<i>W. White</i>	3/15/73	MATERIAL AND FINISH	SEE TABLE	
CHK	<i>W. White</i>	3/15/73	CLASS	TE Connectivity	
DE	<i>Thibault</i>	4-3-73	WIRE - RANGE - INSULATION	PIN HEADER	
APP	<i>Thibault</i>	4-3-73	TOLERANCE EXCEPT AS NOTED	SCALE	LOC NO
DESCRIPTION		8 CIRCUIT MATE-N-LOK P.C. BOARD HEADER		CM B	350212

7

6

5

4

2

X-ON Electronics

Largest Supplier of Electrical and Electronic Components

Click to view similar products for [Pin & Socket Connectors](#) category:

Click to view products by [TE Connectivity](#) manufacturer:

Other Similar products are found below :

[6450822-1](#) [770392-1](#) [794042-1](#) [796885-1](#) [8-794535-1](#) [PLR3455ACS-222](#) [R929991004](#) [R929993003](#) [1403611-1](#) [1-480349-5](#) [152302-5](#)
[153211-2](#) [1586092-1](#) [1586129-1](#) [1586681-4](#) [1586700-1](#) [1586368-1](#) [1586380-1](#) [1586616-1](#) [1586680-5](#) [16-06-0038](#) [164164-5](#) [1-6609930-1](#)
[172296-1](#) [19-09-2035](#) [200503-1](#) [200788-2](#) [2029090-4](#) [2029095-4](#) [925061-7](#) [293734-4](#) [293737-2](#) [1-765362-4](#) [1-794606-3](#) [1871534-1](#)
[200833-4](#) [2008625-2](#) [2029027-2](#) [2029096-4](#) [R929991000](#) [R929991002](#) [R929993000](#) [319-10-101-00-005000](#) [319-10-102-00-001000](#)
[319-10-104-00-001000](#) [319-10-105-00-001000](#) [319-10-108-00-001000](#) [319-10-112-00-006000](#) [39-01-8019](#) [319-10-101-00-001000](#)