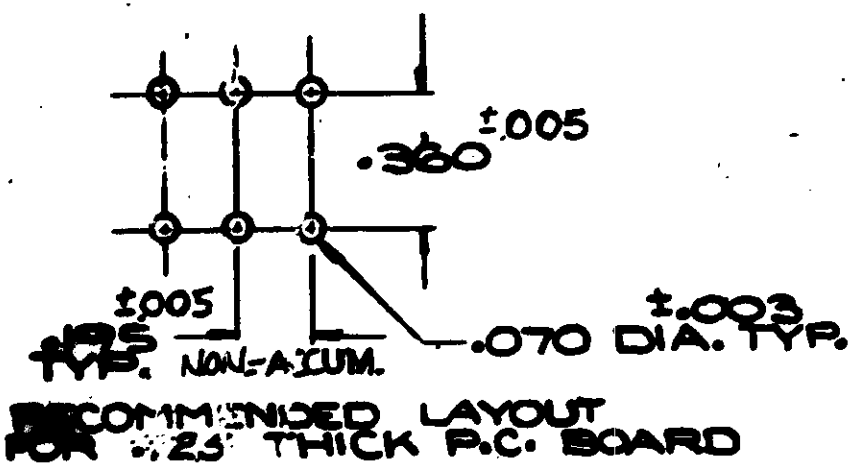
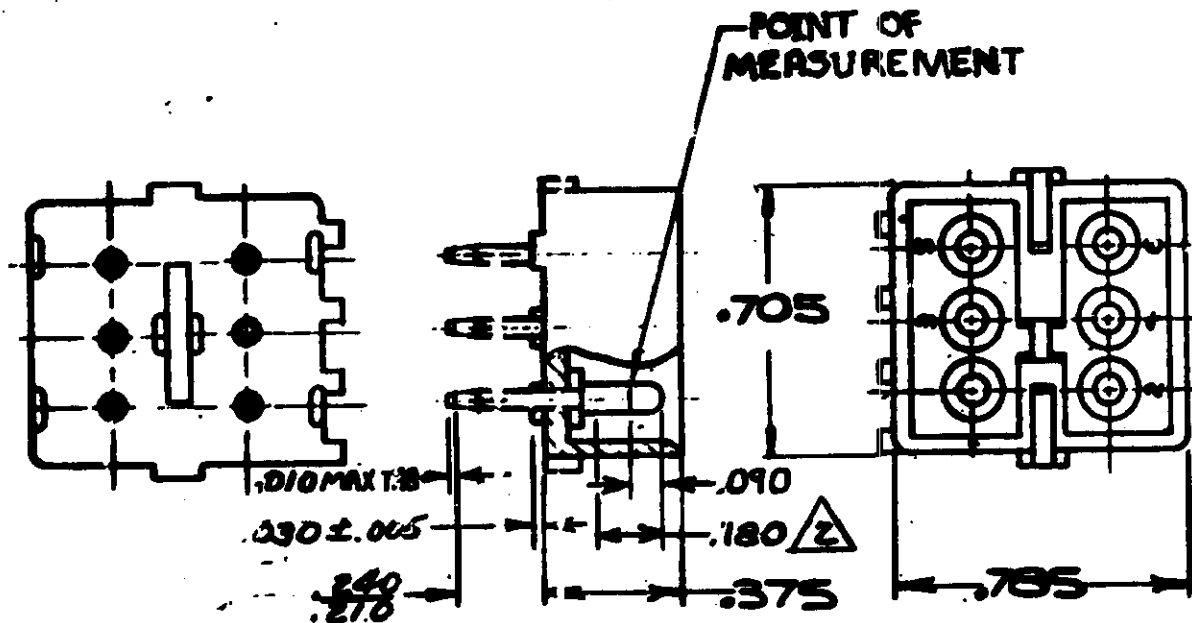


S



- 1. PARTS COMPLY WITH AMP SOLDERABILITY SPEC. NO. 109-11-3
- 2. CONTACT IS PLATED OVERALL WITH .000050 NICKEL, THEN .000030 GOLD OVER CONTACT LENGTH INDICATED AND MATTE TIN ON SOLDER TAIL END.
- 3. OBSOLETE PARTS: OBSOLETE CIS STREAMLINING-PER D.RENAUD/D.SINISI

3 OBSOLETE

ASSEMBLY NO.	HSG.MATL.	COLOR	PIN MATL.	FINISH
350425-2	NYLON	NATURAL	COPPER ALLOY	GOLD
350425-1	NYLON	NATURAL	COPPER ALLOY	FRETIN

K	OBsolete 1-1, 2, 2, 2, 2, 2, 2	KW 4-17 RS 86
	3-1, 3-2, 4-1, 4-2, 5-2, 5-1	
	6-1, 6-2, 7-1, 7-2, 8-1, 8-2	
	9-1, 9-2 CM 473	

REV	PER	ECO-10-000445	KK	AEG	09JAN
RESTORED			RS	9/1/85	
REV. PER M-7375			SS	8/27/85	
REV. PER M-6694			MS	7/1/83	
ADD'S NOTE 2, M-6694			MF	4/24/81	
REV. TAIL LENGTH M-4161			MS	7/10/79	
REVISED M-4161			MF	3-2-77	
ECN M-3871			PH	7/10/76	
ECN 3452			GY	5/8/76	
ECN M-3156			PL	4/1/74	
REDRAW ADDED COLORS			WZ	4/1/85	
LTR	REVISION RECORD		DR	CON	DATE

QTY	DESCRIPTION
527056	350425

QTY	NUMBER	NAME	REMARKS
© 1978 BY AMP INCORPORATED. ALL RIGHTS RESERVED. AMP PRODUCTS COVERED BY PATENTS AND/OR PATENTS PENDING.			CUSTOMER COPY REFERENCE ONLY
9. Schuman 6-27-73	MATERIAL AND FINISH SEE TABLE		AMP INCORPORATED HARRISBURG PENNSA
P. Crayner 6-28-73	WIRE - GAGE - INSULATION TYPE		350425
J. Thibault 6/28/73	TOLERANCE EXC. PT AS NOTED		LOC CM B REV K1
CIRCUIT MATE-N-LOK P.C. BOARD PIN HEADER			

## X-ON Electronics

Largest Supplier of Electrical and Electronic Components

*Click to view similar products for [Pin & Socket Connectors](#) category:*

*Click to view products by [TE Connectivity](#) manufacturer:*

Other Similar products are found below :

[6450822-1](#) [770392-1](#) [794042-1](#) [796885-1](#) [8-794535-1](#) [PLR3455ACS-222](#) [R929991004](#) [R929993003](#) [1403611-1](#) [1-480349-5](#) [152302-5](#)  
[153211-2](#) [1586092-1](#) [1586129-1](#) [1586681-4](#) [1586700-1](#) [1586368-1](#) [1586380-1](#) [1586616-1](#) [1586680-5](#) [16-06-0038](#) [164164-5](#) [1-6609930-1](#)  
[172296-1](#) [19-09-2035](#) [200503-1](#) [200788-2](#) [2029090-4](#) [2029095-4](#) [925061-7](#) [293734-4](#) [293737-2](#) [1-765362-4](#) [1871534-1](#) [200833-4](#)  
[2008625-2](#) [2029027-2](#) [2029096-4](#) [R929991000](#) [R929991002](#) [R929993000](#) [319-10-101-00-005000](#) [319-10-102-00-001000](#) [319-10-104-00-001000](#) [319-10-105-00-001000](#) [319-10-108-00-001000](#) [319-10-112-00-006000](#) [39-01-8019](#) [319-10-101-00-001000](#) [319-10-102-00-005000](#)