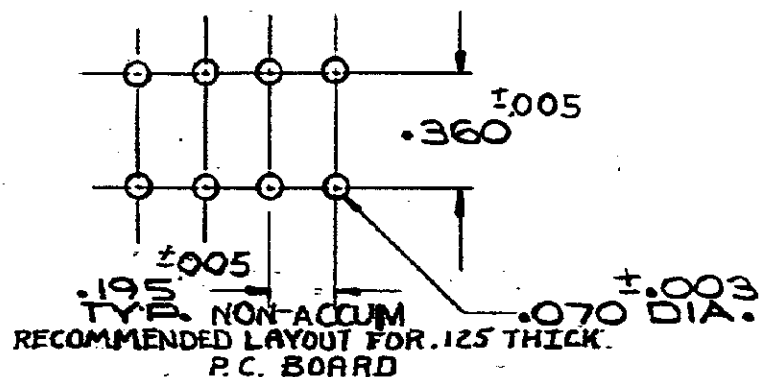
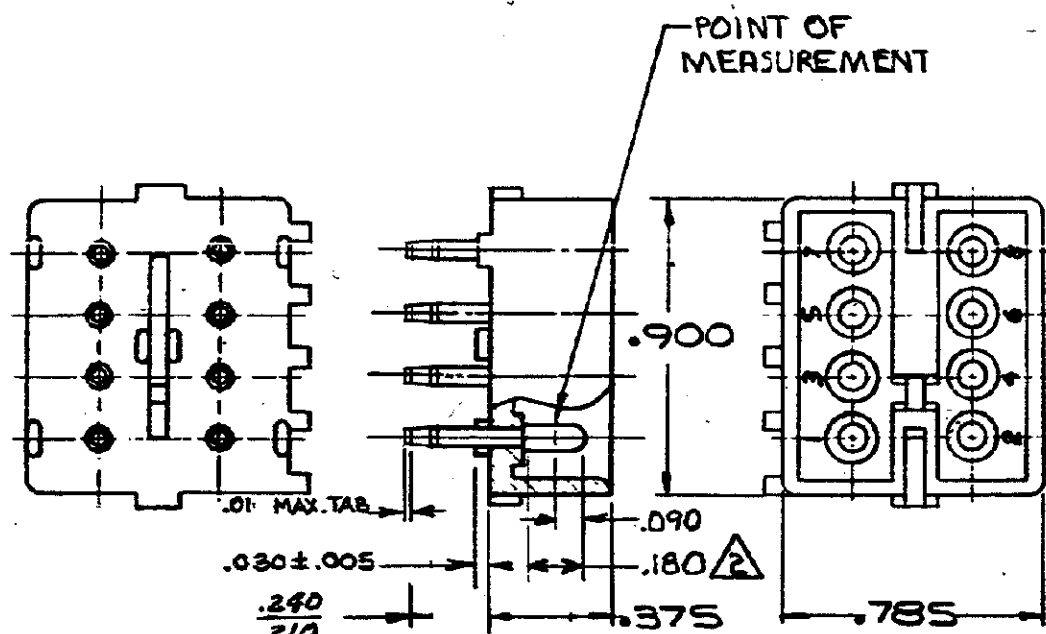


S



1. PARTS COMPLY WITH AMP SOLDERABILITY

SPEC. NO. 109-11-3

2 CONTACT IS PLATED OVERALL WITH .000050 NICKEL, THEN .000030-GOLD OVER CONTACT LENGTH INDICATED AND MATTE TIN ON SOLDER TAIL END.

3 OBSOLETE PARTS: OBSOLETE CIS STREAMLINING- PER D.RENAUD/D.SINISI

3 OBSOLETE

ASSEMBLY NO.	HGS. MATL.- COLOR	FIN MATL. - FINISH
350426-2	NYLON - NATURAL	COPPER ALLOY - GOLD
350426-11	NYLON - NATURAL	COPPER ALLOY - PRE-TIN

DIMENSIONS IN INCHES. DO NOT SCALE PRINT.

PRINT DIST 59

L2	REV PER ECO-10-000445	KK	AEG	09JAN
LTR	REVISION RECORD.	DR.	CHK	DATE

350426 NUMBER REQUIRED PER ASSEMBLY	DWG SIZE NUMBER NAME REMARKS ITEM NO.	© 1978 BY AMP INCORPORATED. ALL RIGHTS RESERVED. AMP PRODUCTS COVERED BY PATENTS AND/OR PATENTS PENDING.	CUSTOMER COPY REFERENCE ONLY	
	DATE 9. Columbia 6-27-73 CHK E. Bremer 6-28-73	MATERIAL AND FINISH SEE TABLE	AMP INCORPORATED BARRINGTON, ILL.	CLASS
	DATE 7-11-73 DATE 6-28-73	WIRE - RANGE - INSULATION TOLERANCE EXCEPT AS NOTED SCALE NAME B CIRCUIT MATE-N-LOK P.C. BOARD PIN HEADER	TYPE	LOC CM B NO 350426 REV L2
	DESCRIPTION	DESCRIPTION	DESCRIPTION	DESCRIPTION

## X-ON Electronics

Largest Supplier of Electrical and Electronic Components

*Click to view similar products for [Pin & Socket Connectors](#) category:*

*Click to view products by [TE Connectivity](#) manufacturer:*

Other Similar products are found below :

[6450822-1](#) [770392-1](#) [794042-1](#) [796885-1](#) [8-794535-1](#) [PLR3455ACS-222](#) [R929991004](#) [R929993003](#) [1403611-1](#) [1-480349-5](#) [152302-5](#)  
[153211-2](#) [1586092-1](#) [1586129-1](#) [1586681-4](#) [1586700-1](#) [1586368-1](#) [1586380-1](#) [1586616-1](#) [1586680-5](#) [16-06-0038](#) [164164-5](#) [1-6609930-1](#)  
[172296-1](#) [19-09-2035](#) [200503-1](#) [200788-2](#) [2029090-4](#) [2029095-4](#) [925061-7](#) [293734-4](#) [293737-2](#) [1-765362-4](#) [1871534-1](#) [200833-4](#)  
[2008625-2](#) [2029027-2](#) [2029096-4](#) [R929991000](#) [R929991002](#) [R929993000](#) [319-10-101-00-005000](#) [319-10-102-00-001000](#) [319-10-104-00-001000](#) [319-10-105-00-001000](#) [319-10-108-00-001000](#) [319-10-112-00-006000](#) [39-01-8019](#) [319-10-101-00-001000](#) [319-10-102-00-005000](#)