

PN 0-1879327-1 AS SHOWN

P	LTR	DESCRIPTION	DATE	DWN	APVD
B		CABLE LENGTH CHANGED FOR 0-4	16JUL2010	PT	ST.P
C		LABEL TEXT CHANGED FOR 0-4	17JUN2020	MHS	ST.P

TE HEADER: 0-350766-1  
CONTACT SOCKET,  
PN: 926901-1 (2X)

1150±20

20±20

RESISTOR: CFH500 100R J WITH CUSTOM  
LEAD LENGTH, LABEL AND CONNECTOR

R1652 500 100R J

DETAIL A

DETAIL A  
SCALE 2:1

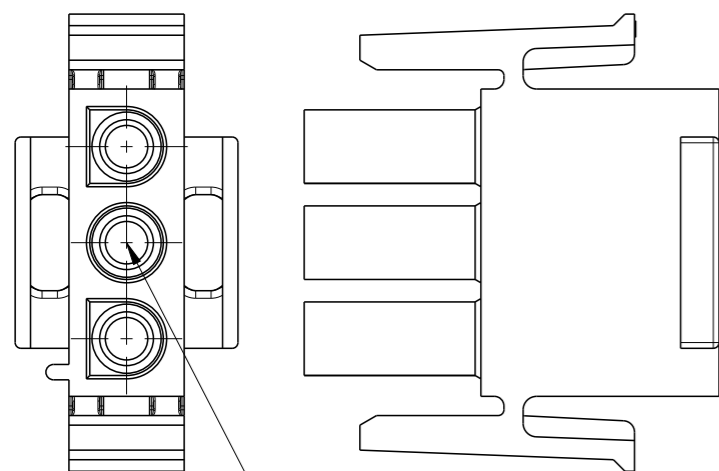
LABEL  
LABEL TEXT TO READ: MCB-X13

CABLE SPEC:  
WIRE TYPE: C511  
WORKING VOLTAGE: 500V  
INSULATION THICKNESS: 0.55mm  
CONDUCTOR STRANDS: 50 x 0.25mm  
CONDUCTOR DIAMETER: 2.00mm

NOTE:

1. CABLES AND WIRES MUST BE UL/CSA APPROVED
2. LABEL MATERIAL: UL94 V-0, V1 OR V2 RATED

0-1879327-4	R1652 350 22R 5%	6001-0813-0101
0-1879327-3	R1652 350 50R 5%	6001-0713-1402
0-1879327-2	R1652 500 56R 5%	N/A
0-1879327-1	R1652 500 100R 5%	6001-0713-1602
TE PN	DESCRIPTION	CUSTOMER NO.



DO NOT USE PIN 2

THIS DRAWING IS A CONTROLLED DOCUMENT.		DWN SUBHASH.M 09-JAN-09		
DIMENSIONS: mm		CHK PRAKASH.S 09-JAN-09		
		APVD STEPHEN.P 09-JAN-09		
TOLERANCES UNLESS OTHERWISE SPECIFIED:		NAME R1652		
0 PLC ±0.2	1 PLC ±0.1	PRODUCT SPEC		
2 PLC ±	3 PLC ±	APPLICATION SPEC		
4 PLC ±	ANGLES ±0.5°	SIZE CAGE CODE DRAWING NO RESTRICTED TO		
MATERIAL	FINISH	A3 00779 C=1879327		
CUSTOMER DRAWING		SCALE 1:1		SHEET 1 OF 4

REVISIONS

P	LTR	DESCRIPTION	DATE	DWN	APVD
		SEE SHEET 1			

PN: 0-1879327-2

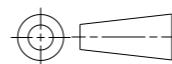
THIS DRAWING IS A CONTROLLED DOCUMENT.

DWN SUBHASH.M 09-JAN-09  
 CHK PRAKASH.S 09-JAN-09  
 APVD STEPHEN.P 09-JAN-09



DIMENSIONS:

mm



TOLERANCES UNLESS OTHERWISE SPECIFIED:

0 PLC ±0.2  
 1 PLC ±0.1  
 2 PLC ±  
 3 PLC ±  
 4 PLC ±  
 ANGLES ±0.5°

MATERIAL

-

FINISH

-

PRODUCT SPEC

APPLICATION SPEC

WEIGHT

-

NAME R1652

SIZE CAGE CODE DRAWING NO RESTRICTED TO

A3 00779 C-1879327

CUSTOMER DRAWING

SCALE 1:1

SHEET 2 OF 4

REV C

PN 0-1879327-3 AS SHOWN

P	LTR	DESCRIPTION	DATE	DWN	APVD
		SEE SHEET 1			

TE HEADER: 0-350766-1  
CONTACT SOCKET,  
PN: 926901-1 (2X)

1150±20

20±20

RESISTOR: CFH350 50R J WITH CUSTOM  
LEAD LENGTH, LABEL AND CONNECTOR

R1652 350 50R J

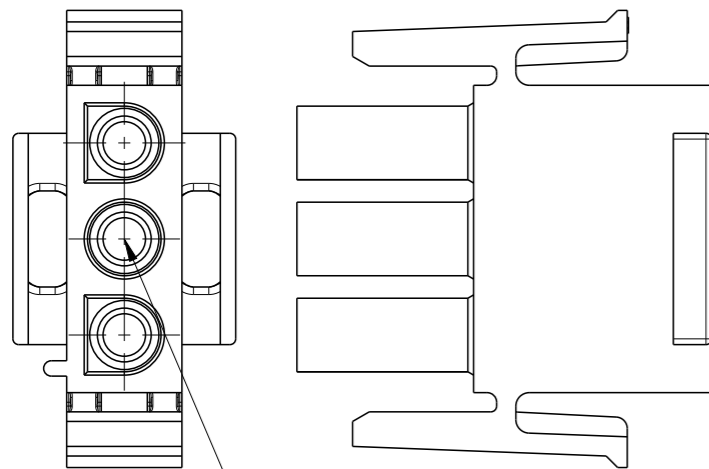
DETAIL A

LABEL  
LABEL TEXT TO READ: MCB-X14


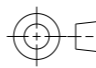
CABLE SPEC:  
WIRE TYPE: C511  
WORKING VOLTAGE: 500V  
INSULATION THICKNESS: 0.55mm  
CONDUCTOR STRANDS: 50 x 0.25mm  
CONDUCTOR DIAMETER: 2.00mm

DETAIL A  
SCALE 2:1

- NOTE:
1. CABLES AND WIRES MUST BE UL/CSA APPROVED
  2. LABEL MATERIAL: UL94 V-0, V1 OR V2 RATED



DO NOT USE PIN 2

THIS DRAWING IS A CONTROLLED DOCUMENT.		DWN SUBHASH.M 09-JAN-09	 TE Connectivity		
DIMENSIONS: mm		CHK PRAKASH.S 09-JAN-09			
		APVD STEPHEN.P 09-JAN-09			
TOLERANCES UNLESS OTHERWISE SPECIFIED:		NAME R1652	RESTRICTED TO		
0 PLC ±0.2 1 PLC ±0.1 2 PLC ± 3 PLC ± 4 PLC ± ANGLES ±0.5°		PRODUCT SPEC -	SIZE A3	CAGE CODE 00779	DRAWING NO C-1879327
MATERIAL -		FINISH -	WEIGHT -	SCALE 1:1	SHEET 3 OF 4
		CUSTOMER DRAWING		REV C	

PN 0-1879327-4 AS SHOWN

P	LTR	DESCRIPTION	DATE	DWN	APVD
		SEE SHEET 1			

TE HEADER: 0-350766-1  
CONTACT SOCKET,  
PN: 926901-1 (2X)

1100±20

20±20

RESISTOR: CFH350 22R J WITH CUSTOM  
LEAD LENGTH, LABEL AND CONNECTOR

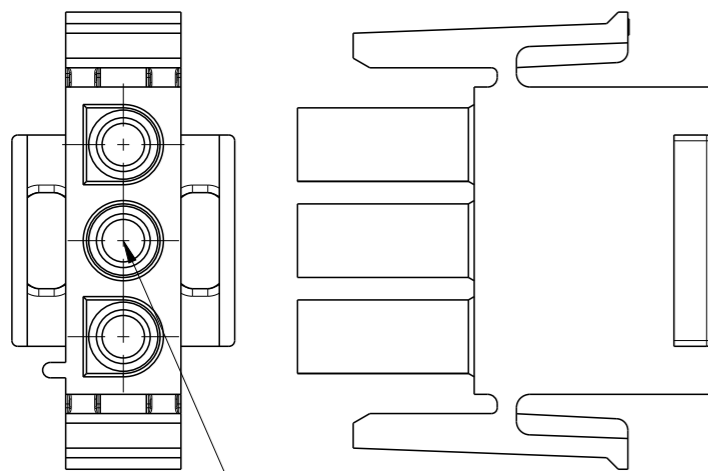
R1652 350 22R J

DETAIL A

LABEL  
LABEL TEXT TO READ: MCB-X3/4

CABLE SPEC:  
WIRE TYPE: C511  
WORKING VOLTAGE: 500V  
INSULATION THICKNESS: 0.55mm  
CONDUCTOR STRANDS: 50 x 0.25mm  
CONDUCTOR DIAMETER: 2.00mm



DETAIL A  
SCALE 2:1



DO NOT USE PIN 2

NOTE:

1. CABLES AND WIRES MUST BE UL/CSA APPROVED
2. LABEL MATERIAL: UL94 V-0, V1 OR V2 RATED

THIS DRAWING IS A CONTROLLED DOCUMENT.		DWN SUBHASH.M 09-JAN-09	 TE Connectivity	
DIMENSIONS: mm		CHK PRAKASH.S 09-JAN-09		
		APVD STEPHEN.P 09-JAN-09		
TOLERANCES UNLESS OTHERWISE SPECIFIED:		NAME R1652	RESTRICTED TO	
0 PLC	±0.2	PRODUCT SPEC	SIZE	CAGE CODE
1 PLC	±0.1	APPLICATION SPEC	A3	00779
2 PLC	±	WEIGHT	DRAWING NO	0-1879327
3 PLC	±	CUSTOMER DRAWING	SCALE	1:1
4 PLC	±		SHEET	4 OF 4
ANGLES	±0.5°		REV	C
MATERIAL	FINISH			
-	-			
-	-			

## X-ON Electronics

Largest Supplier of Electrical and Electronic Components

*Click to view similar products for [Pin & Socket Connectors](#) category:*

*Click to view products by [TE Connectivity](#) manufacturer:*

Other Similar products are found below :

[6450822-1](#) [770392-1](#) [794042-1](#) [796885-1](#) [8-794535-1](#) [PLR3455ACS-222](#) [R929991004](#) [R929993003](#) [1403611-1](#) [1-480349-5](#) [152302-5](#)  
[153211-2](#) [1586092-1](#) [1586129-1](#) [1586681-4](#) [1586700-1](#) [1586368-1](#) [1586380-1](#) [1586616-1](#) [1586680-5](#) [16-06-0038](#) [164164-5](#) [1-6609930-1](#)  
[172296-1](#) [19-09-2035](#) [200503-1](#) [200788-2](#) [2029090-4](#) [2029095-4](#) [925061-7](#) [293734-4](#) [293737-2](#) [1-765362-4](#) [1871534-1](#) [200833-4](#)  
[2008625-2](#) [2029027-2](#) [2029096-4](#) [R929991000](#) [R929991002](#) [R929993000](#) [319-10-101-00-005000](#) [319-10-102-00-001000](#) [319-10-104-00-001000](#) [319-10-105-00-001000](#) [319-10-108-00-001000](#) [319-10-112-00-006000](#) [39-01-8019](#) [319-10-101-00-001000](#) [319-10-102-00-005000](#)