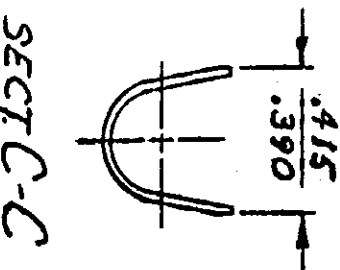
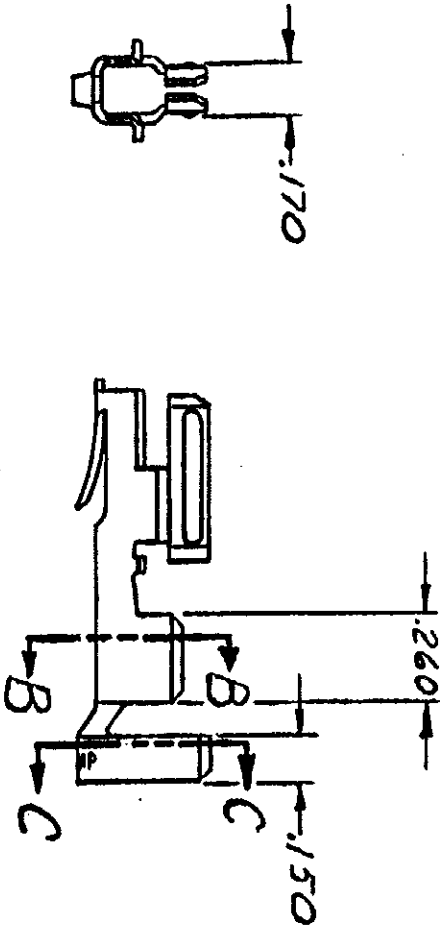
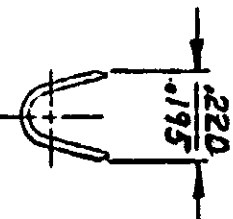
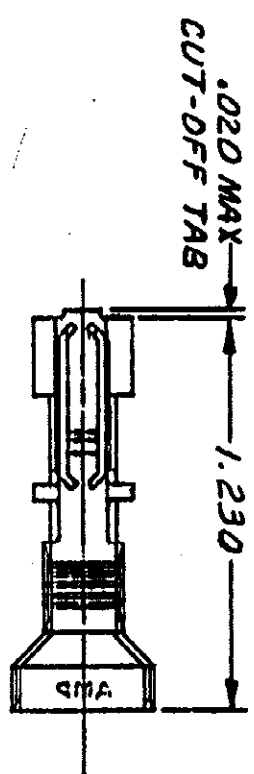


DRAWING MADE IN THIRD ANGLE PROJECTION

© COPYRIGHT 1977 BY AMP INCORPORATED, HARRISBURG, PA.
 ALL INTERNATIONAL RIGHTS RESERVED. AMP INCORPORATED PRODUCTS
 COVERED BY U. S. AND FOREIGN PATENTS AND/OR PATENTS PENDING.

REVISIONS				1	Loc S	DIST 64
P	F	ZONE	LTR	DESCRIPTION	DATE	APPROVED
✓		0		REL. DWG: M-4121	2-11-77	M.F.
✓		A		REVISED PER M-4428	2-25-77	Q.Q./B.H.
✓		A1		RESTORATION	4-25-77	K.J.J.
✓		B		OBSOLETE - 2 & SHEET 2 CM-473	3-4-86	K.S./R.S.
✓		C		WAS LOC CM, REVISED	8-18-87	M.H.



UNLESS OTHERWISE SPECIFIED DIMENSIONS ARE IN INCHES. TOLERANCES ON: ANGLES ± .015		CONTRACT NO. DR 279 2-11-77		NAME: AMP INCORPORATED, HARRISBURG, PA.	
MATERIAL: PHOS BRZ		CHK: [Signature] 3/14/77		INSULATION: .360 DIA MAX	
FINISH: TIN		APPD: [Signature] 3/15/77		WIRE RANGE: 12-8	
OTHER APPD:		DSGN APPD:		PART NO: 350821-1	
SIZE: B		CODE IDENT NO: 00779		DRAWING NO: 350821	
SCALE: 10F1		SHEET: 1 OF 1			

CUSTOMER DRAWING

AMP 1473-18 (7-73)

X-ON Electronics

Largest Supplier of Electrical and Electronic Components

Click to view similar products for [Power to the Board](#) category:

Click to view products by [TE Connectivity](#) manufacturer:

Other Similar products are found below :

[6450171-4](#) [6450552-7](#) [6600323-8](#) [6643429-1](#) [6646040-2](#) [6651939-1](#) [6766604-1](#) [120959-1](#) [1393557-2](#) [1393532-2](#) [1393532-3](#) [1393532-4](#)
[1393557-1](#) [1600812-5](#) [1-6450861-2](#) [1744132-7](#) [1761122-1](#) [1766250-1](#) [1892109-1](#) [2-6450860-5](#) [2-6450870-0](#) [1-6450161-4](#) [1-6450850-6](#) [1-6450869-6](#) [1645526-2](#) [1-6600130-0](#) [2005243-2](#) [377-0020-11130](#) [TE34-12-16P-F0](#) [5-6450830-6](#) [5646956-4](#) [377-0080-11131A](#) [4-6450830-9](#)
[4-6600333-3](#) [10125416-4050LF](#) [6600320-3](#) [3-6450860-5](#) [1888123-2](#) [6450166-1](#) [6643978-1](#) [6766605-1](#) [701-15-02109](#) [N11444](#) [6651938-1](#)
[6450810-7](#) [46437-1112](#) [1-1589677-8](#) [5646956-5](#) [6450813-2](#) [6450129-4](#)