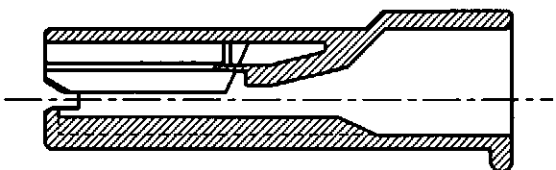
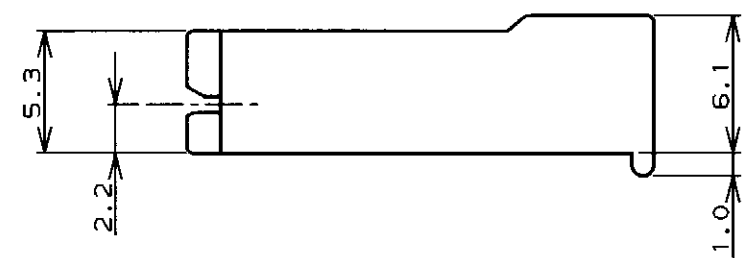
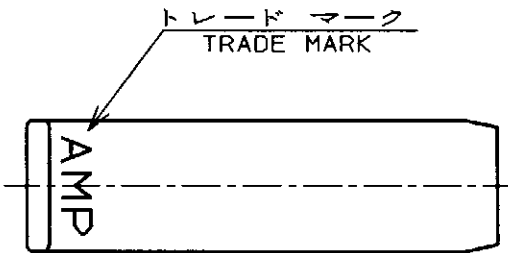
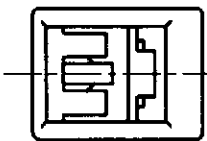
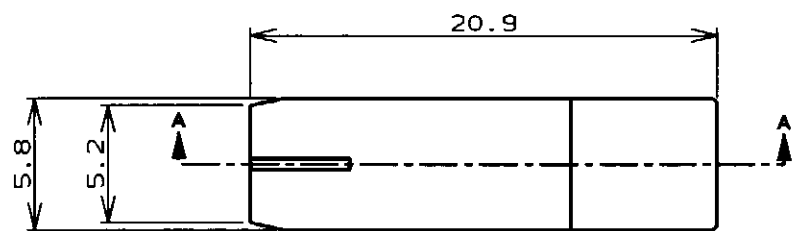
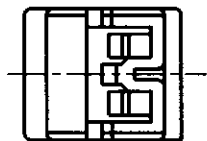
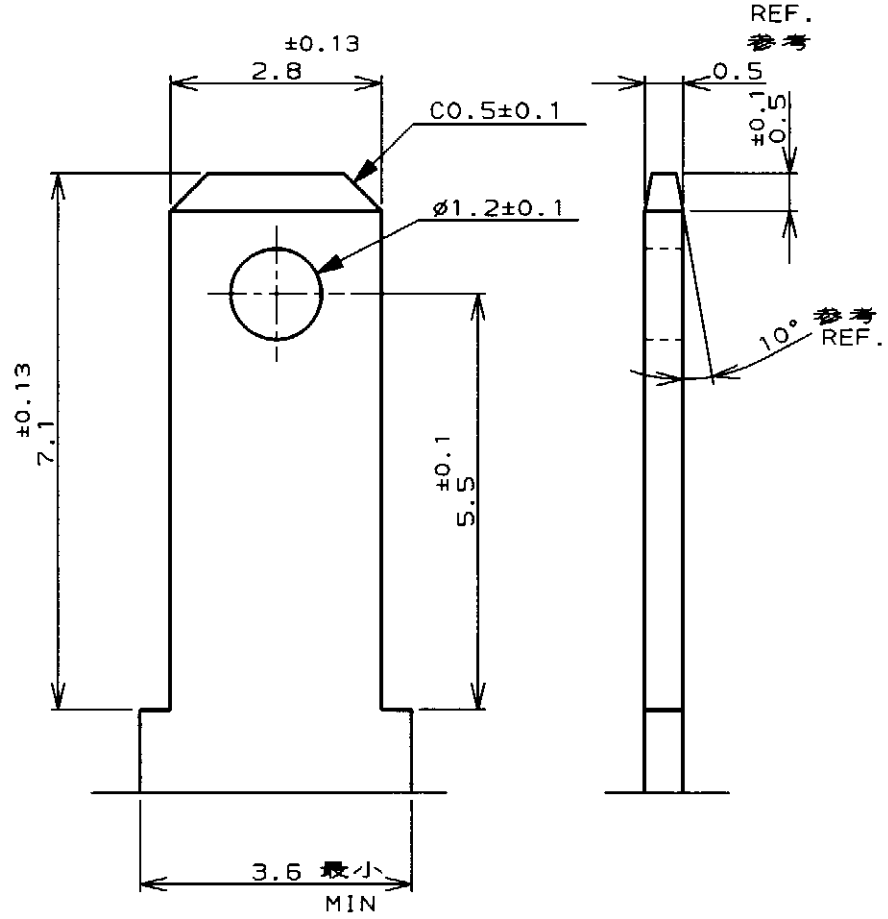


LOC	DIST	REVISIONS						
		P	LTR	DESCRIPTION	ECN	DATE	DWN	APVD
J	---		0	RELEASED	FJ00-0400-97	4. APR. '97	M.S	M.S
			A	REVISED	FJ00-0952-97	26 JUN '97	あさ	あさ



断面 "A" - "A" SECT.



推奨タブ図 APPLICABLE TAB DIMENSIONS

自然色 (NATURAL)	353251-1
色調 (COLOR)	型番 (P/N)

<p>THIS DRAWING IS A CONTROLLED DOCUMENT FOR AMP INCORPORATED. IT IS SUBJECT TO CHANGE AND THE CONTROLLING ENGINEERING ORGANIZATION SHOULD BE CONTACTED FOR THE LATEST REVISION.</p>		<p>OWN M. SUZUKI 4. APR. '97</p>		<p>INSULATION DIA 被覆外径</p>	
<p>DIMENSIONS: 単位: 概 mm</p>		<p>CHK M. SHINDO 4. APR. '97</p>		<p>AMP 日本アール・エム・シー株式会社 Kawasaki, Japan</p>	
<p>TOLERANCES UNLESS OTHERWISE SPECIFIED</p> <p>一般公差</p> <p>10mm ±0.2</p> <p>30mm ±0.25</p> <p>100mm ±0.3</p> <p>ANGLE: ±0.3°</p>		<p>APVD M. SHINDO 4. APR. '97</p>		<p>NAME 110 シリーズ ポジティブ ロック EX-III</p> <p>名称 1極 ハウジング</p>	
<p>MATERIAL 6/6ナイロン (UL94V-0) 6/6 NYLON</p>		<p>FINISH 仕上</p>		<p>PRODUCT SPEC 108-5530</p> <p>APPLICATION SPEC 114-5229</p>	
<p>WEIGHT</p>		<p>CUSTOMER DRAWING</p>		<p>SIZE A3 CAGE CODE 00779 DRAWING NO. 番号 C=353251</p>	
<p>SCALE 尺度</p>		<p>SHEET 1 OF 1 REV A</p>		<p>参考図面</p>	

X-ON Electronics

Largest Supplier of Electrical and Electronic Components

Click to view similar products for [Terminals](#) category:

Click to view products by [TE Connectivity](#) manufacturer:

Other Similar products are found below :

[00-054007-01074-6](#) [00-054007-70206-1](#) [00-054007-70210-8](#) [00-054007-70217-7](#) [00-054007-70226-9](#) [00-054007-70228-3](#) [00-054007-70248-1](#) [00-054007-70256-6](#) [00-054007-70301-3](#) [00-054007-70316-7](#) [00-054007-49560-4](#) [00-054007-70209-2](#) [00-054007-70225-2](#) [00-054007-70227-6](#) [00-054007-70231-3](#) [00-054007-70241-2](#) [00-054007-70242-9](#) [00-054007-70244-3](#) [00-054007-70246-7](#) [00-054007-70263-4](#) [00-054007-70288-7](#) [00-054007-70290-0](#) [00-054007-70300-6](#) [00-054007-70304-4](#) [01-2065-1-0216](#) [01-2900-1-04412](#) [00581P0075](#) [600TS-10](#) [60205-1](#) [604200-1](#) [605601-1](#) [60598-1-CUT-TAPE](#) [61314-6-C](#) [61810-3](#) [61-S](#) [61-SN](#) [626-0194](#) [62-NBM-A](#) [62-SN](#) [62-SP](#) [63-S](#) [640179-1](#) [M55155/059I03](#) [M55155/079C01](#) [M55155/099H02](#) [M55155/109H01](#) [M55155/109H02](#) [M55155/12XH05](#) [M55155/16XH02](#) [M55155/29-5S](#)