

THIS DRAWING IS UNPUBLISHED.

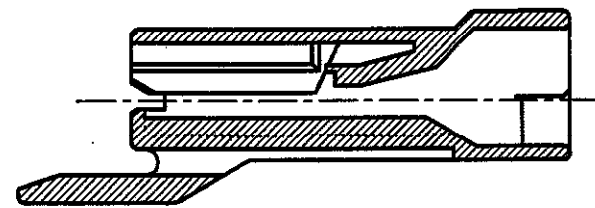
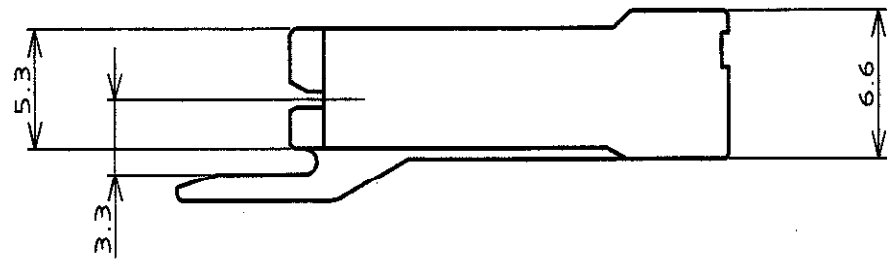
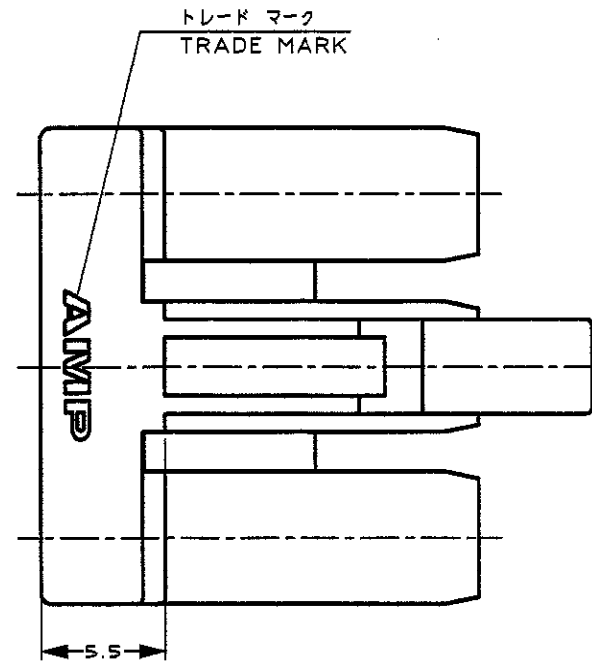
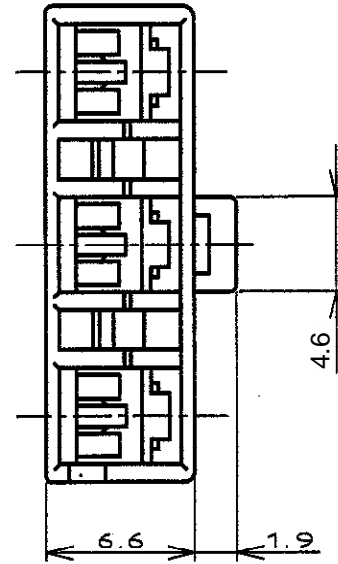
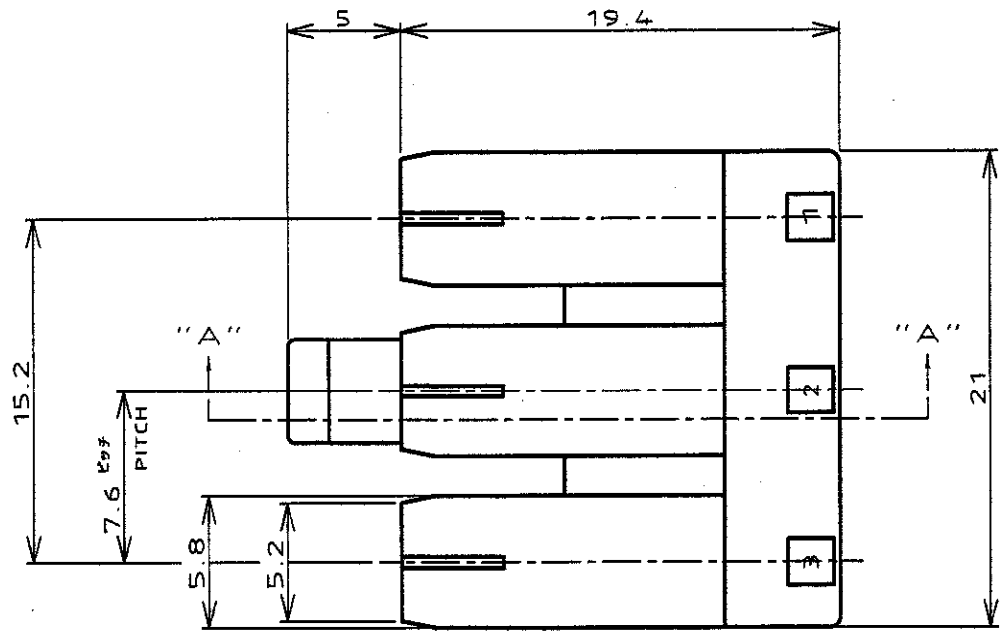
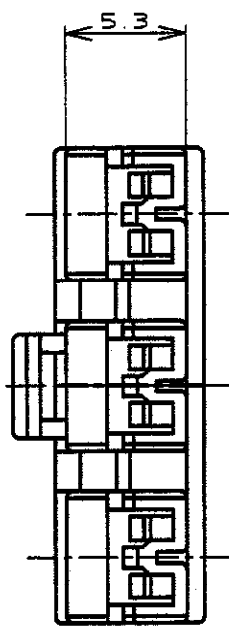
RELEASED FOR PUBLICATION

.19

© COPYRIGHT 19

BY AMP INCORPORATED. ALL RIGHTS RESERVED.

LOC	DIST	REVISIONS						
		P	LTR	DESCRIPTION	ECN	DATE	DWN	APVD
			A	REVISED	FJ00-0612-01	11 JUN '01	T.Y	M.S
			A1	REVISED PER	ECO-09-026346	26 NOV 09	KK	AEG



断面 "A" - "A" SECT.

1 OBSOLETE PARTS: OBSOLETE CIS STREAMLINING PER D.RENAUD/D.SINISI

1 OBSOLETE	赤 (RED)	353255-7
	青 (BLUE)	353255-6
	自然色 (NATURAL)	353255-1
	色目 (COLOR)	型番 (P/N)

THIS DRAWING IS A CONTROLLED DOCUMENT FOR AMP INCORPORATED. IT IS SUBJECT TO CHANGE AND THE CONTROLLING ENGINEERING ORGANIZATION SHOULD BE CONTACTED FOR THE LATEST REVISION.		CHK M.SUZUKI 23.AUG.'96	Tyco Electronics AMP K.K. Kawasaki, Japan	
DIMENSIONS: 単位 寸 mm	TOLERANCES UNLESS OTHERWISE SPECIFIED 一般公差 10 : ±0.2 20 : ±0.25 30 : ±0.3 100 : ±0.3 ANGLE : ±0.3°	APVD Y.KASHIWA 23.AUG.'96	NAME 110 シリーズ ポジティブ ロック EX-III ダブル ロック タイプ 3極 ハウジング 110 SERIES POSITIVE LOCK EX-III DOUBLE LOCK TYPE 3Pos. HOUSING	
MATERIAL 材料 6/6ナイロン(UL94V-0) 6/6 NYLON	FINISH 仕上 ---	PRODUCT SPEC 規格番号 108-5530	APPLICATION SPEC 取付適用規格 114-5229	WIRE RANGE 適合電線断面積 ---
WEIGHT ---		DRAWING NO C=353255		INSULATION DIA 被覆外径 ---
CUSTOMER DRAWING		SIZE A3	CAGE CODE 00779	SHEET 1 OF 1
		REV A1		

X-ON Electronics

Largest Supplier of Electrical and Electronic Components

Click to view similar products for [Terminals](#) category:

Click to view products by [TE Connectivity](#) manufacturer:

Other Similar products are found below :

[00-054007-01074-6](#) [00-054007-70206-1](#) [00-054007-70210-8](#) [00-054007-70217-7](#) [00-054007-70226-9](#) [00-054007-70228-3](#) [00-054007-70248-1](#) [00-054007-70256-6](#) [00-054007-70301-3](#) [00-054007-70316-7](#) [00-054007-49560-4](#) [00-054007-70209-2](#) [00-054007-70225-2](#) [00-054007-70227-6](#) [00-054007-70231-3](#) [00-054007-70241-2](#) [00-054007-70242-9](#) [00-054007-70244-3](#) [00-054007-70246-7](#) [00-054007-70263-4](#) [00-054007-70288-7](#) [00-054007-70290-0](#) [00-054007-70300-6](#) [00-054007-70304-4](#) [01-2065-1-0216](#) [01-2900-1-04412](#) [00581P0075](#) [600TS-10](#) [60205-1](#) [604200-1](#) [605601-1](#) [60598-1-CUT-TAPE](#) [61314-6-C](#) [61810-3](#) [61-S](#) [61-SN](#) [626-0194](#) [62-NBM-A](#) [62-SN](#) [62-SP](#) [63-S](#) [640179-1](#) [M55155/059I03](#) [M55155/079C01](#) [M55155/099H02](#) [M55155/109H01](#) [M55155/109H02](#) [M55155/12XH05](#) [M55155/16XH02](#) [M55155/29-5S](#)