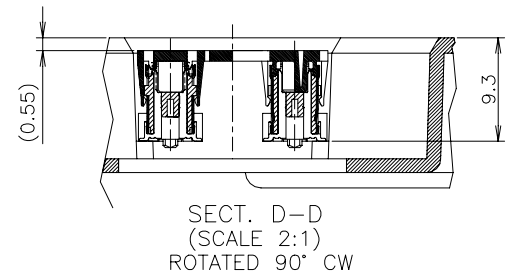
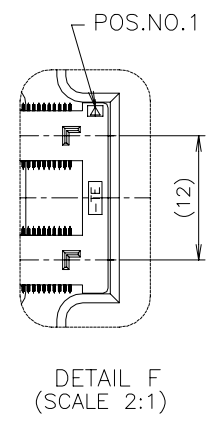
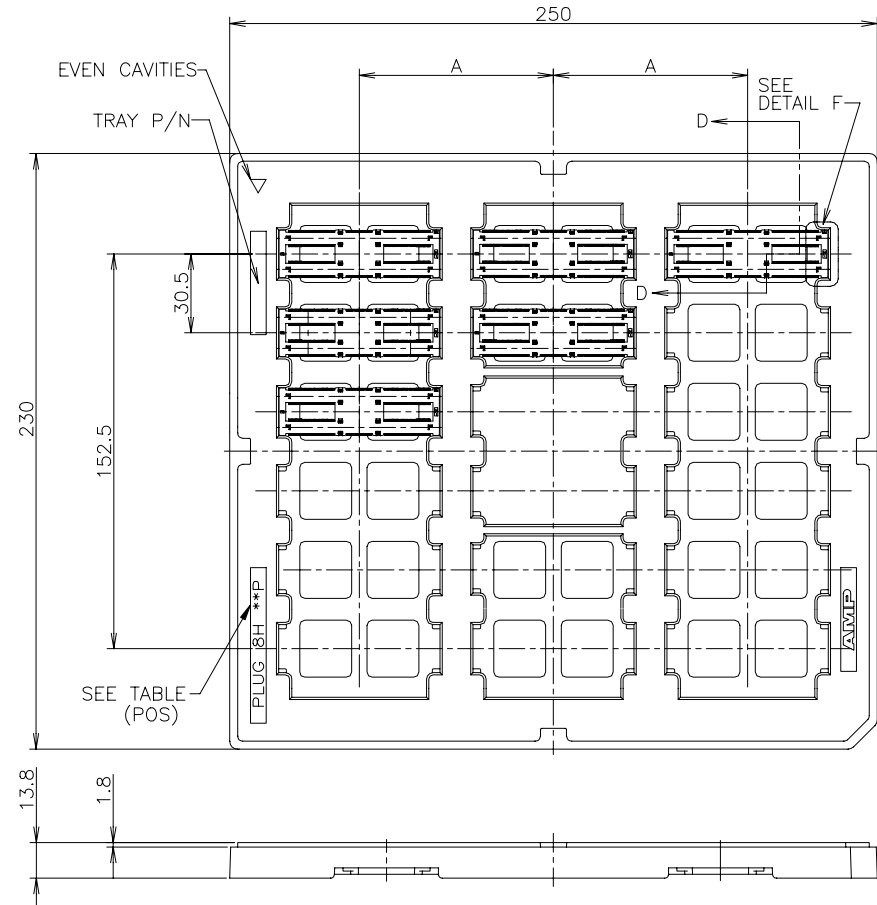


P	LTR	DESCRIPTION	DATE	DWN	APVD
D1		ECN-21-114380 : ADD MATED CONDITION	30AUG2021	AL	HL

3-5353652-6 / 8 / 9 PACKAGE: AS SHOWN



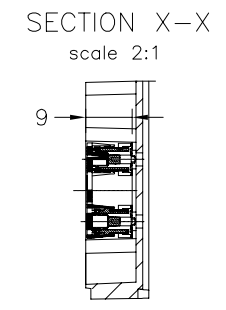
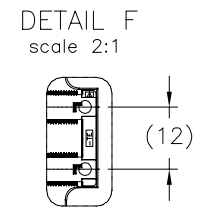
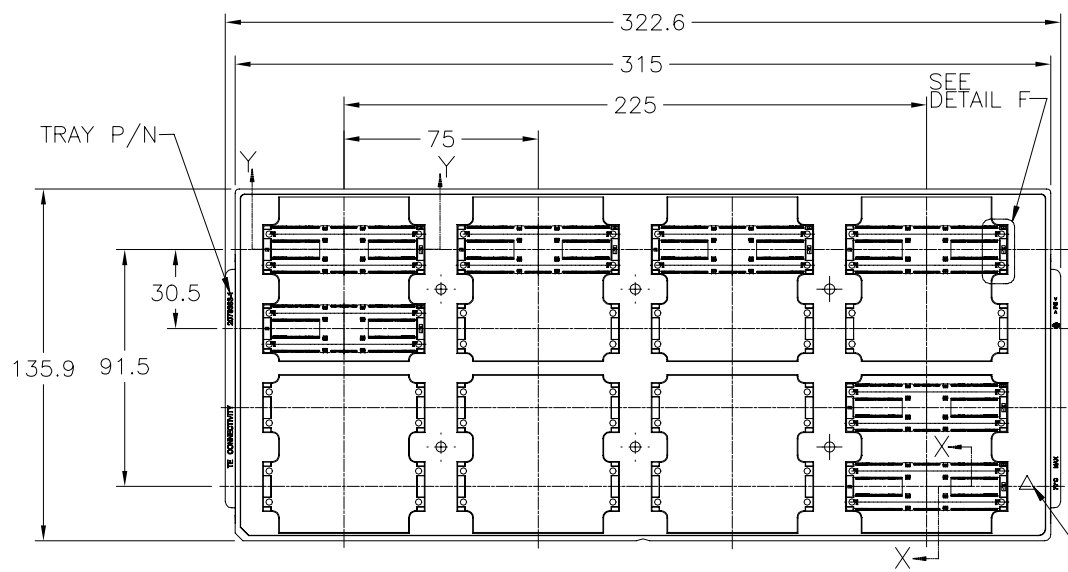
3	18	75	440	3-5353652-9
3	18	75	440	3-5353652-8
3	18	75	440	3-5353652-6
ROW	QTY	A	POS.	PART NO.

THIS DRAWING IS A CONTROLLED DOCUMENT.

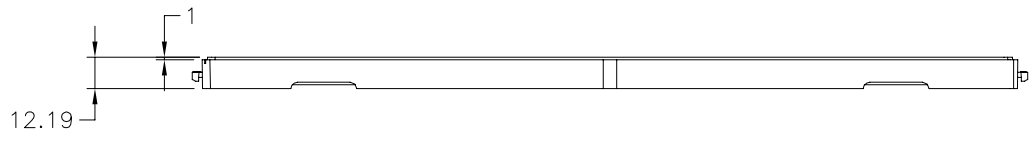
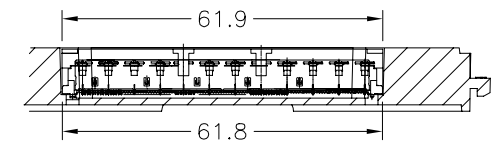
DWN S.CHIEH 18MAY05	TE Connectivity Ltd. HARD TRAY ASSY FH 0.5BTB CONNECTOR PLUG 8H W/G-PLATE ON 2ROW CAP				
CHK T.FUTATSUGI 18MAY05					
APVD H.KODAMA 18MAY05					
PRODUCT SPEC 108-5560					
APPLICATION SPEC	NAME				
MATERIAL	FINISH	SIZE A3	CAGE CODE 00779	DRAWING NO G=5353652	RESTRICTED TO
CUSTOMER DRAWING		SCALE 1:2	SHEET 1 OF 9	REV D1	

P	LTR	DESCRIPTION	DATE	DWN	APVD
-	-	SEE SHEET 1	-	-	-

3-5353652-7 PACKAGE : AS SHOWN



SECTION Y-Y
scale 2:1



NON SEALANT	YES	4	16	440	2078333-1	3-5353620-6	3-5353652-7
TOOLING STATUS	ROW	QTY	POS.	TRAY P/N	ON CAP	CONN P/N	PART NO.

THIS DRAWING IS A CONTROLLED DOCUMENT.

DIMENSIONS: MM	TOLERANCES UNLESS OTHERWISE SPECIFIED:
	0 PLC ± 0.25
	1 PLC ± 0.15
	2 PLC ± 0.10
	3 PLC ± 0.05
	4 PLC ± 0.0250
	ANGLES ± 3'
MATERIAL	FINISH

DWN	18MAY05
S.CH IEN	
CHK	18MAY05
T.FUTATSUGI	
APVD	18MAY05
H.KODAMA	
PRODUCT SPEC	
108-5560	
APPLICATION SPEC	
WEIGHT	
CUSTOMER DRAWING	

				TE Connectivity Ltd.			
NAME							
HARD TRAY ASSY							
FH 0.5BTB CONNECTOR							
PLUG 8H W/G-PLATE ON 2ROW CAP							
SIZE	CAGE CODE	DRAWING NO	RESTRICTED TO				
A3	00779	C=5353652	-				
SCALE 1:2			SHEET 2 OF 9		REV D1		

4

3

2

1

© - TE Connectivity. All Rights Reserved.

REVISIONS

P	LTR	DESCRIPTION	DATE	DWN	APVD
-	-	SEE SHEET 1	-	-	-

CAP SETTING CONDITION OF 3-5353652-6/7/8/9

Top view of the connector assembly. Dimensions include: overall width 18.4, overall height 16.8, distance between connector rows 18.75, distance from centerline to edge 7.2, and a tolerance of ± 0.1 . Callouts include 'POS NO.1' pointing to a specific position, 'TRADE MARK' pointing to a triangle symbol, and 'A' indicating cross-section lines.

Side view of the connector assembly. Dimensions include: overall height 18.2, distance between connector rows 3.9, and a distance of 2.0 from the centerline to the edge. Callouts include '220POS/CONNECTOR' pointing to the connector rows.

Bottom view of the connector assembly. Dimension shown is 8.75, representing the distance between the two rows of connectors.

BLACK	61.9	440	3-5353652-9
BLACK	61.9	440	3-5353652-8
BLACK	61.9	440	3-5353652-7
BLACK	61.9	440	3-5353652-6
CAP COLOR	B	POS	PART NO.

NOTE

SINK SURFACE 0.1, RISING CHARACTER 0.08

'-TE-' MANUFACTURED BY TE JP

'-TE-' MANUFACTURED BY TE QD

THIS DRAWING IS A CONTROLLED DOCUMENT.

DIMENSIONS:
MM

TOLERANCES UNLESS
OTHERWISE SPECIFIED:

0 PLC	± 0.25
1 PLC	± 0.15
2 PLC	± 0.10
3 PLC	± 0.05
4 PLC	± 0.0250
ANGLES	$\pm 3'$

MATERIAL

FINISH

DWN S. CHIEN 18MAY05

CHK T. FUTATSUGI 18MAY05

APVD H. KODAMA 18MAY05

PRODUCT SPEC

APPLICATION SPEC

108-5560

WEIGHT

CUSTOMER DRAWING

SCALE 1:2

SHEET 3 OF 9

REV D1

NAME

DRAWING NO

RESTRICTED TO

SIZE

CAGE CODE

A3

00779

C=5353652

SCALE 1:2

SHEET 3 OF 9

REV D1

TE Connectivity Ltd.

HARD TRAY ASSY

FH 0.5BTB CONNECTOR

PLUG 8H W/G-PLATE ON 2ROW CAP

1470-19 (1/15)

4

3

2

1

© - TE Connectivity. All Rights Reserved.

REVISIONS

P	LTR	DESCRIPTION	DATE	DWN	APVD
-	-	SEE SHEET 1	-	-	-

6-5353652-2 PACKAGE: AS SHOWN
 1-5353652-2 PACKAGE: AS SHOWN

250
 EVEN CAVITIES
 TRAY P/N
 30.5
 230
 152.5
 SEE TABLE (POS)
 PLUG 8H *P
 AMP
 SEE DETAIL M
 J
 J
 K
 K
 L
 L
 14.5
 1.8

N
 H
 K-K
 (SCALE 1:1)

TOOLING STATUS	ROW	QTY	J	H	N	POS.	TRAY P/N	ON CAP CONN P/N	PART NO.
NOT AVAILABLE	3	18	↑	66.8	66.9	480	.	6-5353620-7	6-5353652-7
↑	↑	↑	↑	61.8	61.9	440	.	6-↑	6-↑
↑	↑	↑	75	56.8	56.9	400	.	6-↑	6-↑
↑	↑	↑	70	51.8	51.9	360	.	6-↓	6-↓
NOT AVAILABLE	↑	↑	↑	49.3	49.4	340	.	6-5353620-3	6-5353652-3
AVAILABLE	↑	↑	↑	46.8	46.9	320	7-912066-6	6-5353620-2	6-5353652-2
NOT AVAILABLE	↑	↑	↑	44.3	44.4	300	.	6-5353620-1	6-5353652-1
↑	↑	↑	↑	41.8	41.9	280	.	6-↑	6-↑
↑	3	18	70	36.8	36.9	240	.	5-↑	5-↑
↑	5	30	43	31.8	31.9	200	.	5-↑	5-↑
↑	↑	↑	↑	29.3	29.4	180	.	5-↑	5-↑
↑	↑	↑	↑	26.8	26.9	160	.	5-↑	5-↑
↑	↑	↑	↑	24.3	24.4	140	.	5-↑	5-↑
↑	↑	↑	↑	21.8	21.9	120	.	5-↑	5-↑
↑	↑	↑	↑	19.3	19.4	100	.	5-↑	5-↑
↑	↑	↑	↑	16.8	16.9	80	.	5-↓	5-↓
NOT AVAILABLE	5	30	43	14.3	14.4	60	.	5-5353620-1	5-5353652-1
NOT AVAILABLE	3	18	↑	66.8	66.9	480	.	1-5353620-7	1-5353652-7
↑	↑	↑	↑	61.8	61.9	440	.	1-↑	1-↑
↑	↑	↑	75	56.8	56.9	400	.	1-↑	1-↑
↑	↑	↑	70	51.8	51.9	360	.	1-↓	1-↓
NOT AVAILABLE	↑	↑	↑	49.3	49.4	340	.	1-5353620-3	1-5353652-3
AVAILABLE	↑	↑	↑	46.8	46.9	320	7-912066-6	1-5353620-2	1-5353652-2
NOT AVAILABLE	↑	↑	↑	44.3	44.4	300	.	1-5353620-1	1-5353652-1
↑	↑	↑	↑	41.8	41.9	280	.	1-↑	1-↑
↑	3	18	70	36.8	36.9	240	.	↑	↑
↑	5	30	43	31.8	31.9	200	.	↑	↑
↑	↑	↑	↑	29.3	29.4	180	.	↑	↑
↑	↑	↑	↑	26.8	26.9	160	.	↑	↑
↑	↑	↑	↑	24.3	24.4	140	.	↑	↑
↑	↑	↑	↑	21.8	21.9	120	.	↑	↑
↑	↑	↑	↑	19.3	19.4	100	.	↑	↑
↑	↑	↑	↑	16.8	16.9	80	.	↑	↑
NOT AVAILABLE	5	30	43	14.3	14.4	60	.	5353620-1	5353652-1

SEALANT (SIF-200B)

NON SEALANT

SEALANT

POS.NO.1
 (12)

DETAIL M
(SCALE 1:1)

(0.55)
 10

L-L
(SCALE 1:1)
ROTATED 90°CW

THIS DRAWING IS A CONTROLLED DOCUMENT.

DIMENSIONS:
MM

MATERIAL

TOLERANCES UNLESS OTHERWISE SPECIFIED:

0 PLC ± 0.25
 1 PLC ± 0.15
 2 PLC ± 0.10
 3 PLC ± 0.05
 4 PLC ANGLES ± 0.0250
 ± 3'

FINISH

DWN

CHK

APVD

PRODUCT SPEC

APPLICATION SPEC

WEIGHT

CUSTOMER DRAWING

NAME

SIZE

CAGE CODE

DRAWING NO

RESTRICTED TO

TE Connectivity Ltd.

HARD TRAY ASSY

FH 0.5BTB CONNECTOR

PLUG 8H W/G-PLATE ON 2ROW CAP

A3

00779

C=5353652

SCALE 4:1

SHEET 4 OF 9

REV D1

1470-19 (1/15)

4

3

2

1

© - TE Connectivity. All Rights Reserved.

CAP SETTING CONDITION OF 1-5353652-2 & 6-5353652-2

REVISIONS

P	LTR	DESCRIPTION	DATE	DWN	APVD
-	-	SEE SHEET 1	-	-	-

Top view of the connector assembly. Dimensions include a total width of 160, a central section width of 16, and a total height of 18.4. A vertical dimension of 16.2 is shown on the left. A horizontal dimension of 7.8 is shown on the right. Features include 'POS NO.1' and a 'TRADE MARK' symbol (a triangle with a circle inside).

160POS/CONNECTOR


Side view of the connector assembly showing the 160-pin configuration. The pins are arranged in two rows of 80 pins each.

160POS/CONNECTOR

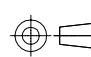
Cross-sectional view of the connector assembly showing the internal structure and a height dimension of 9.45.

YES	NATURAL	46.9	320	6-5353652-2
NO	NATURAL	46.9	320	1-5353652-2
SEALANT	CAP COLOR	R	POS	PART NO.

NOTE

 SINK SURFACE 0.1, RISING CHARACTER 0.08
 'TE' MANUFACTURED BY TE JP
 'TE-' MANUFACTURED BY TE QD

THIS DRAWING IS A CONTROLLED DOCUMENT.

DIMENSIONS: MM	TOLERANCES UNLESS OTHERWISE SPECIFIED:	DWN	---
	0 PLC ± 0.25	CHK	---
	1 PLC ± 0.15	APVD	---
	2 PLC ± 0.10	PRODUCT SPEC	---
	3 PLC ± 0.05	APPLICATION SPEC	---
	4 PLC ANGLES ± 0.0250 ± 3'	WEIGHT	---
MATERIAL	FINISH	CUSTOMER DRAWING	---

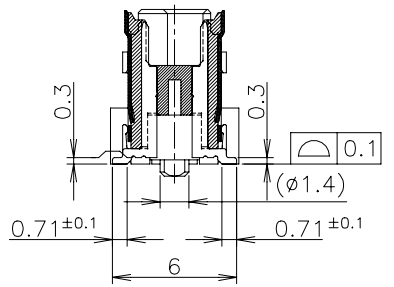
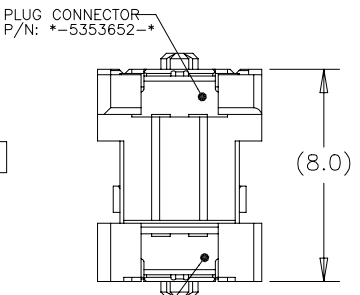
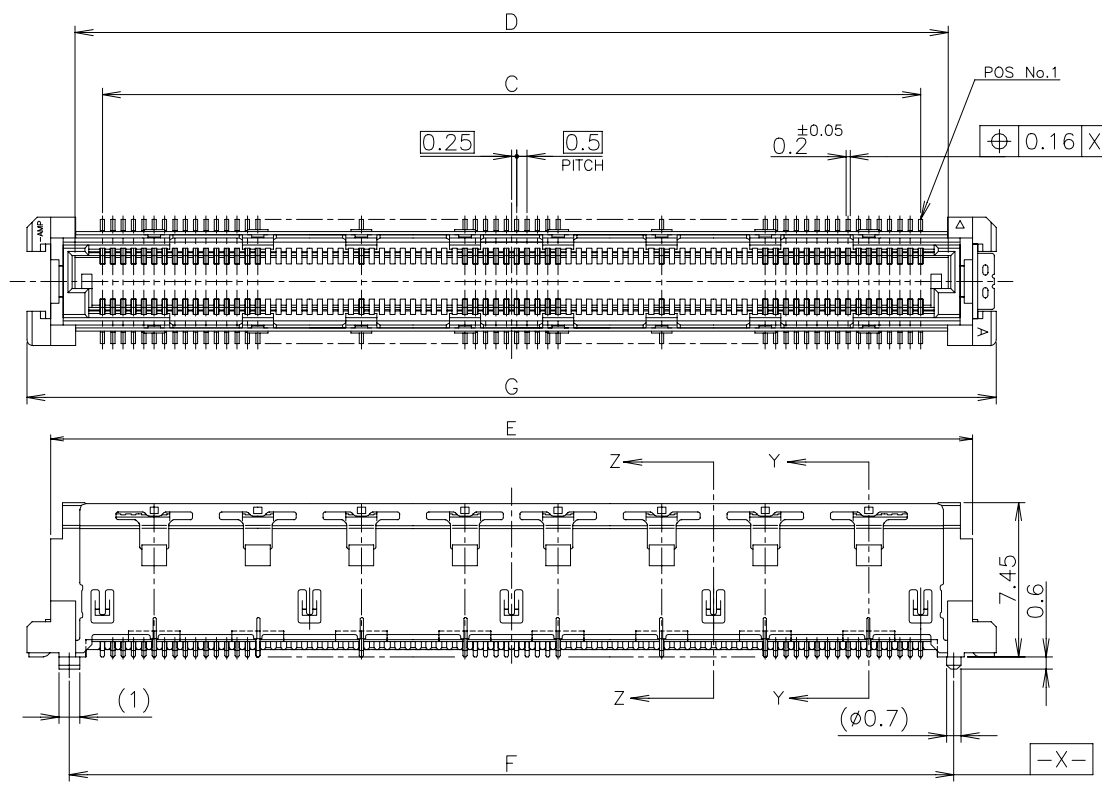
 TE Connectivity Ltd.

HARD TRAY ASSY
 FH 0.5BTB CONNECTOR
 PLUG 8H W/G-PLATE ON 2ROW CAP

SIZE	CAGE CODE	DRAWING NO	RESTRICTED TO
A3	00779	C=5353652	---
SCALE 4:1		SHEET 5 OF 9	REV D1

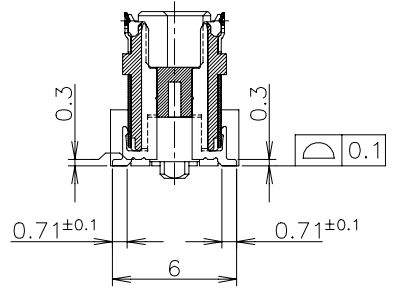
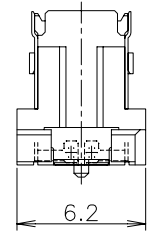
1470-19 (1/15)

REVISIONS					
P	LTR	DESCRIPTION	DATE	DWN	APVD
-	-	SEE SHEET 1	-	-	-



SECT. Z-Z (SIGNAL POSITION)

Ⓜ FULL-MATED CONDITION



SECT. Y-Y (GROUND POSITION)

- ③ MATERIAL ; HOUSING : HIGH TEMP THERMO PLASTIC UL94V-0
CONTACT : COPPER ALLOY
SOLDER PEG : COPPER ALLOY
- ④ FINISH ; SIGNAL CONTACT : UNDER PL Ni 0.0013mm MIN ALL OVER.
CONTACT AREA 0.0002mm MIN Au PL.
SOLDERING AREA 0.001mm MIN TIN PL.
GROUND CONTACT : UNDER PL Ni 0.0013mm MIN ALL OVER.
CONTACT AREA 0.0002mm MIN Au PL.
SOLDERING AREA 0.001mm MIN TIN PL.
SOLDER PEG : 0.001mm MIN TIN PL. OVER
0.0013mm MIN Ni PL ALL OVER.
- ⑤ THIS POSITION IS GROUND CIRCUIT.
- ⑥ THIS PRODUCT IS COATED BY FLUX-PENETRATION-INHIDITING AGENT.
- ⑦ FINISH ; SIGNAL CONTACT : UNDER PL Ni 0.0013mm MIN ALL OVER.
CONTACT AREA 0.00076mm MIN Au PL.
SOLDERING AREA 0.001mm MIN TIN PL.
GROUND CONTACT : UNDER PL Ni 0.0013mm MIN ALL OVER.
CONTACT AREA 0.00076mm MIN Au PL.
SOLDERING AREA 0.001mm MIN TIN PL.
SOLDER PEG : 0.001mm MIN TIN PL. OVER
0.0013mm MIN Ni PL ALL OVER.

	△	61.8	57.7	59.5	57.1	54.5	220	BLACK	3-5353652-9
HM-15	△	61.8	57.7	59.5	57.1	54.5	220	BLACK	3-5353652-8
	△	46.8	42.7	44.5	42.1	39.5	160	NATURAL	6-5353652-2
	△	46.8	42.7	44.5	42.1	39.5	160	NATURAL	1-5353652-2
	△	61.8	57.7	59.5	57.1	54.5	220	BLACK	3-5353652-6
LUBRICANT	PLATING SPEC	G	F	E	D	C	POS OF EACH CONNECTOR	HSG COLOR	PART NO.

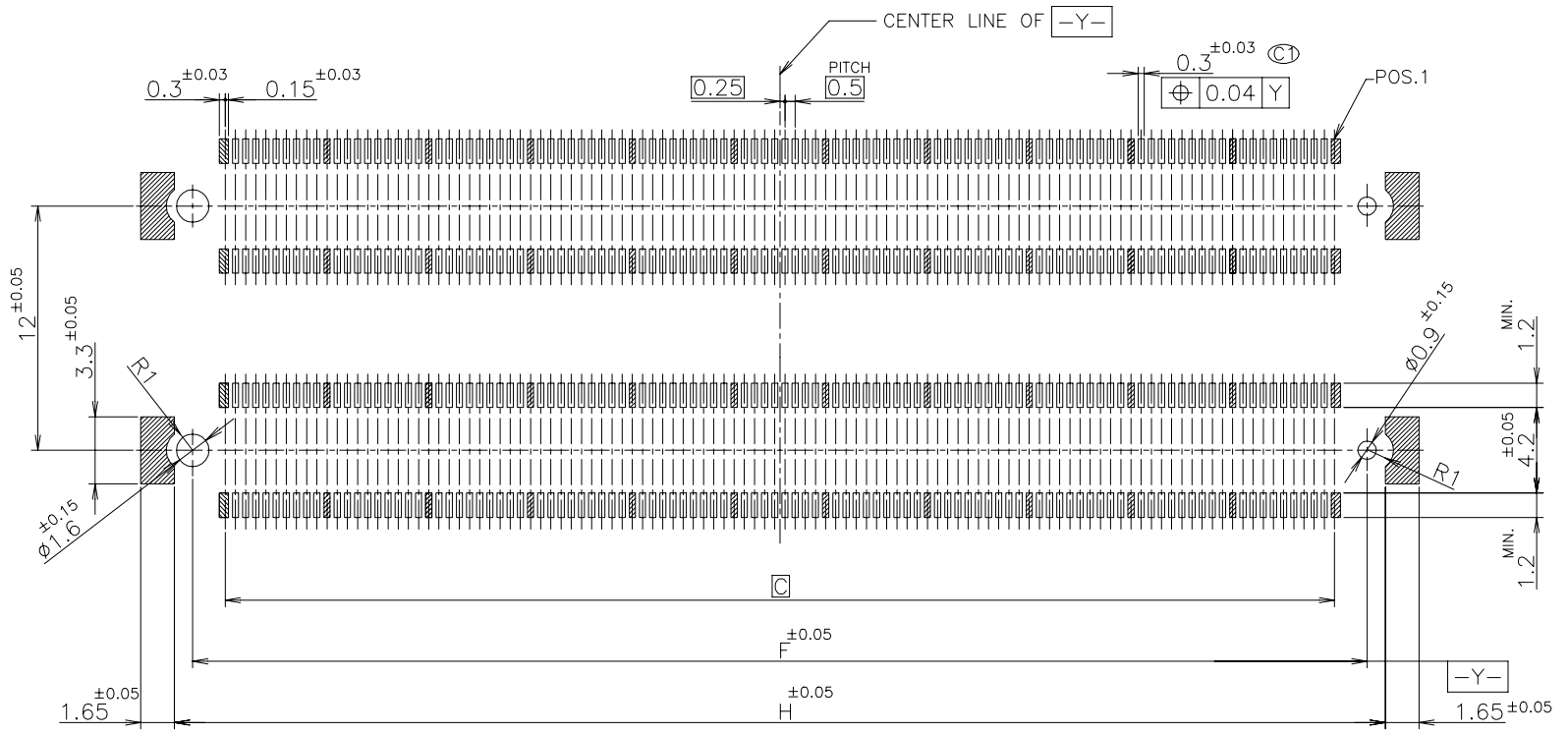
THIS DRAWING IS A CONTROLLED DOCUMENT.

DIMENSIONS: MM	TOLERANCES UNLESS OTHERWISE SPECIFIED:	DWN	CHK	APVD	NAME
0 PLC ± 0.25	1 PLC ± 0.15	PRODUCT SPEC	APPLICATION SPEC	WEIGHT	CUSTOMER DRAWING
2 PLC ± 0.10	3 PLC ± 0.05	SIZE	CAGE CODE	DRAWING NO	RESTRICTED TO
4 PLC ± 0.025	ANGLES ± 3'	A3	00779	G=5353652	
MATERIAL	FINISH	SCALE 4:1		SHEET 6 OF 9	
①	②	REV D1			

TE TE Connectivity Ltd.

HARD TRAY ASSY
FH 0.5BTB CONNECTOR
PLUG 8H W/G-PLATE ON 2ROW CAP

REVISIONS					
P	LTR	DESCRIPTION	DATE	DWN	APVD
-	-	SEE SHEET 1	-	-	-



REFERENCE P.C.BOARD LAYOUT

59.5	57.7	440	3-5353652-9
59.5	57.7	440	3-5353652-8
59.5	57.7	440	3-5353652-7
44.5	42.7	320	6-5353652-2
44.5	42.7	320	1-5353652-2
59.5	57.7	440	3-5353652-6
H	F	POS	PART NO.

THIS DRAWING IS A CONTROLLED DOCUMENT.

DIMENSIONS: MM	TOLERANCES UNLESS OTHERWISE SPECIFIED: 0 PLC ± 0.25 1 PLC ± 0.15 2 PLC ± 0.10 3 PLC ± 0.05 4 PLC ± 0.0250 ANGLES ± 3'	DWN	TE Connectivity Ltd.		
MATERIAL	FINISH	CHK	HARD TRAY ASSY		
		APVD	FH 0.5BTB CONNECTOR		
		PRODUCT SPEC	PLUG 8H W/G-PLATE ON 2ROW CAP		
		APPLICATION SPEC	SIZE	CAGE CODE	DRAWING NO
		WEIGHT	A3	00779	C=5353652
		CUSTOMER DRAWING	SCALE	SHEET	REV
			4:1	7 OF 9	D1

4

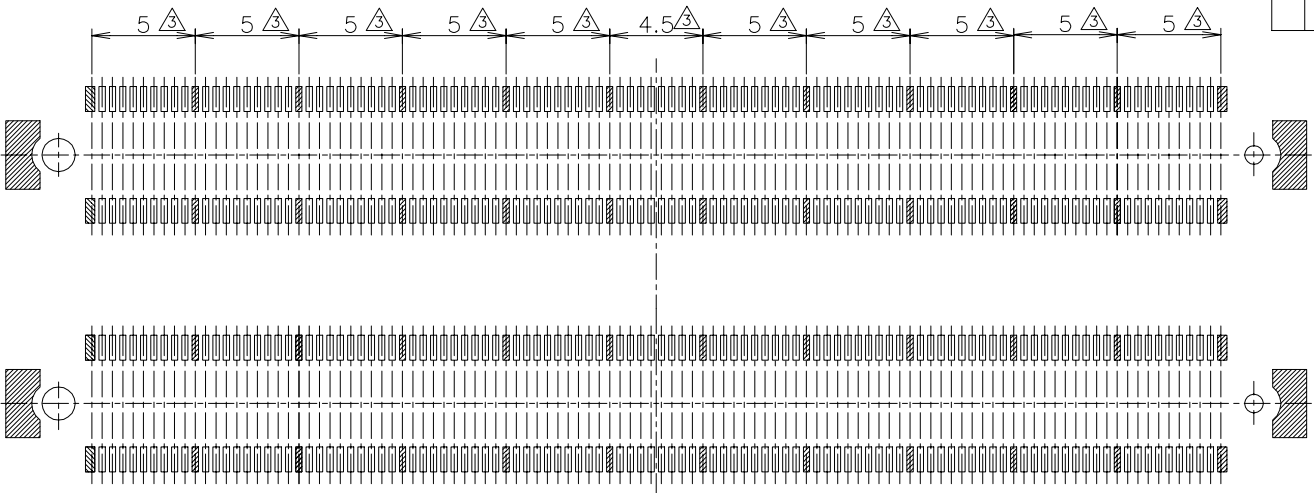
3

2

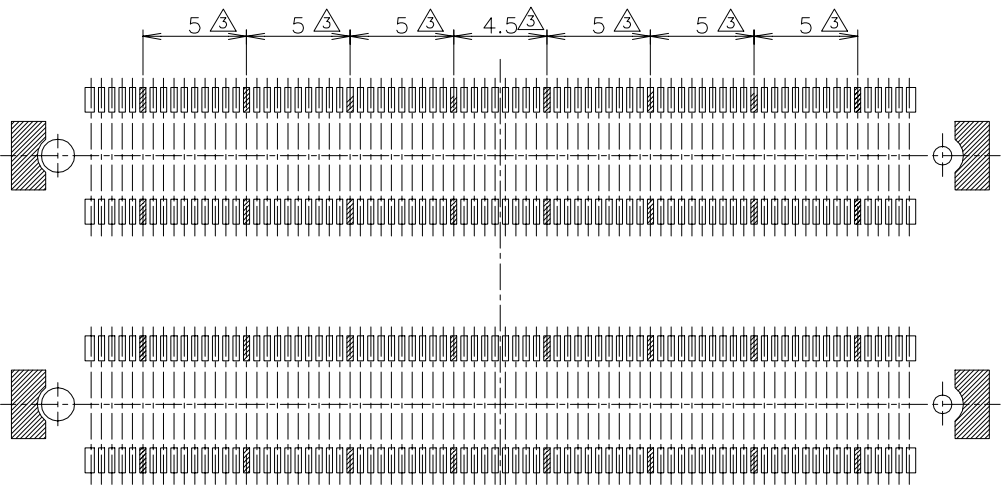
1

© - TE Connectivity. All Rights Reserved.

REVISIONS					
P	LTR	DESCRIPTION	DATE	DWN	APVD
-	-	SEE SHEET 1	-	-	-



440P



320P

P.C. BOARD LAYOUT

THIS DRAWING IS A CONTROLLED DOCUMENT.		DWN _____		TE Connectivity Ltd.	
DIMENSIONS: MM		CHK _____			
		APVD _____			
		NAME			
TOLERANCES UNLESS OTHERWISE SPECIFIED:		PRODUCT SPEC _____		HARD TRAY ASSY	
0 PLC ± 0.25		APPLICATION SPEC _____		FH 0.5BTB CONNECTOR	
1 PLC ± 0.15		WEIGHT _____		PLUG 8H W/G-PLATE ON 2ROW CAP	
2 PLC ± 0.10		CUSTOMER DRAWING		SIZE	RESTRICTED TO
3 PLC ± 0.05		SCALE 4:1		CAGE CODE	DRAWING NO
4 PLC ± 0.025		SHEET 8 OF 9		A3	00779
ANGLES ± 3'		REV D1		C=5353652	
MATERIAL _____		FINISH _____		DRAWING NO	

4

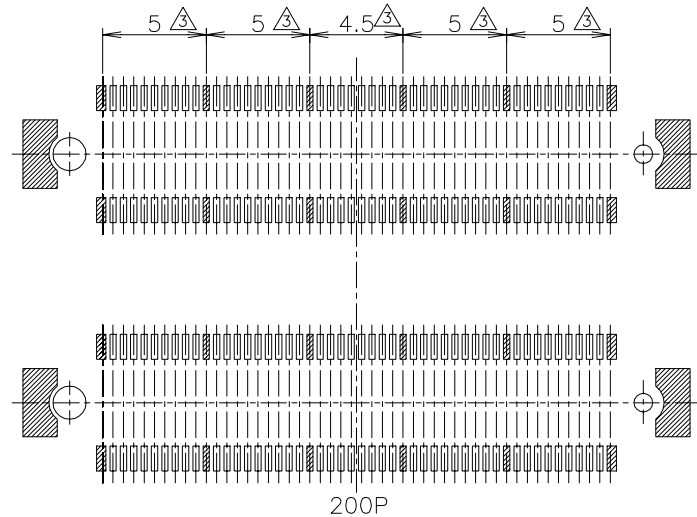
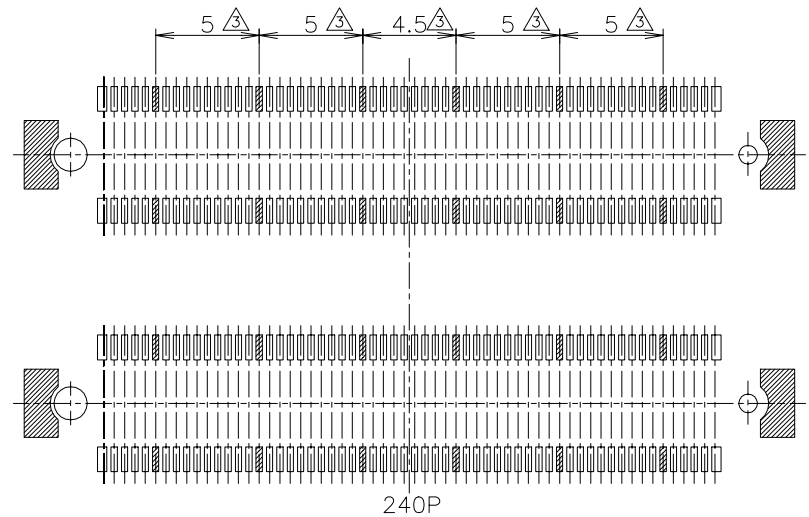
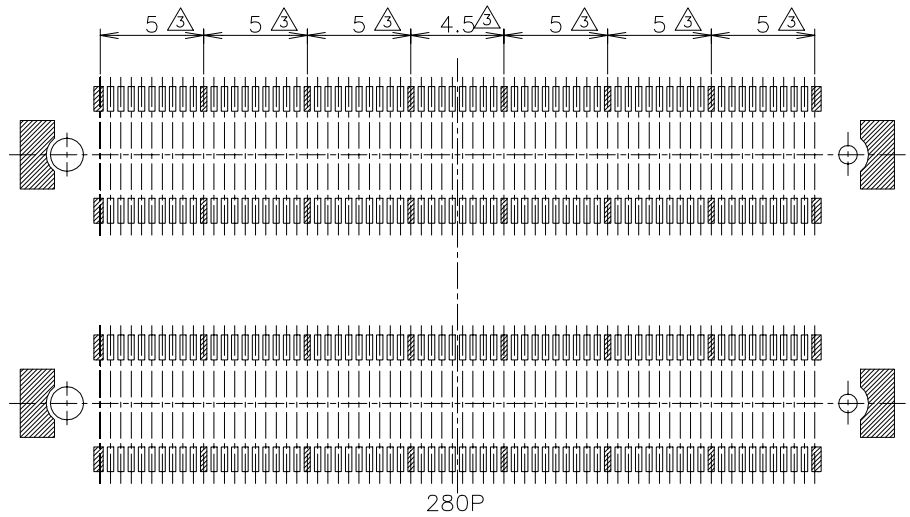
3

2

1

© - TE Connectivity. All Rights Reserved.

REVISIONS					
P	LTR	DESCRIPTION	DATE	DWN	APVD
-	-	SEE SHEET 1	-	-	-



THIS DRAWING IS A CONTROLLED DOCUMENT.

DWN	_____
CHK	_____
APVD	_____
PRODUCT SPEC	_____
APPLICATION SPEC	_____
WEIGHT	_____
CUSTOMER DRAWING	_____

DIMENSIONS: MM		TOLERANCES UNLESS OTHERWISE SPECIFIED:		NAME	
0 PLC	± 0.25	1 PLC	± 0.15	TE TE Connectivity Ltd. HARD TRAY ASSY FH 0.5BTB CONNECTOR PLUG 8H W/G-PLATE ON 2ROW CAP	
1 PLC	± 0.15	2 PLC	± 0.10		
2 PLC	± 0.10	3 PLC	± 0.05		
3 PLC	± 0.05	4 PLC	± 0.0250		
4 PLC	± 0.0250	ANGLES	± 3°	SIZE	A3
MATERIAL	FINISH			CAGE CODE	00779
				DRAWING NO	C=5353652
				RESTRICTED TO	_____
				SCALE	4:1
				SHEET	9 of 9
				REV	D1

X-ON Electronics

Largest Supplier of Electrical and Electronic Components

Click to view similar products for [Board to Board & Mezzanine Connectors](#) category:

Click to view products by [TE Connectivity](#) manufacturer:

Other Similar products are found below :

[589158040000018](#) [MDF7C-18P-2.54DSA\(55\)](#) [FCN-230C068-11](#) [FCN-268F012-G/BD](#) [FCN-268F036-G/BD](#) [FCN-268M012-G/0D](#) [FCN-268M024-G/1D](#) [FCN-723J004/1](#) [MIS-048-01-F-D-DP-K](#) [832-10-034-10-001000](#) [FX4C-80S-1.27DSA](#) [FCN-214Q030-G/0](#) [FCN-234P048-G/0](#) [FCN-235D050-G/C](#) [210-93-314-41-105000](#) [2-22603-0](#) [MDF7-40DP-2.54DSA\(55\)](#) [AXG720047](#) [5031084030](#) [MIT-114-03-F-D-K](#) [55323-1519](#) [DF33-2P-3.3DSA\(24\)](#) [YFT-20-05-H-03-SB-K](#) [503308-3040](#) [026-6203-PDB](#) [027-6203-PDB](#) [069159702701000](#) [10123981-102LF](#) [101A10019X](#) [55650-0588-C](#) [68682-310LF](#) [68684-306](#) [75140-7012](#) [87471-650](#) [YTW-30-07-H-Q-410-140](#) [194261-1](#) [FCN-268F024-G0D](#) [10124054-515LF](#) [68685-603](#) [8-1616154-3](#) [MIS-019-01-F-D](#) [FCN-268M024-G/3D](#) [20021832-06016C1LF](#) [KX15-20KLDL-E1000E](#) [MDF7-16DP-2.54DSA\(55\)](#) [AXE810124](#) [FCN-214J100-G/0](#) [FCN-230C068-E/S](#) [AXE812124](#) [AXE816124](#)