



Raychem

TE Internal #: 197577-000

Breakouts & Transitions, Y Shape, 3 Branches , 100, 100, Adhesive Pre-Coat, Operating Temperature Range -30 – 105 °C [-22 – 221 °F]

[View on TE.com >](#)

Harnessing > Heat Shrink Components > Breakouts & Transitions



Molded Part Shape: **Y Shape**

Number of Branches/Legs: **3**

Material Code: **100**

Breakout & Transition Material Systems Code: **100**

Adhesive Pre-Coat: **Yes**

## Features

### Product Type Features

Molded Part Shape	Y Shape
Size Code	014

### Configuration Features

Number of Branches/Legs	3
-------------------------	---

### Body Features

Material	Low Fire Hazard Material
Material Code	100
Breakout & Transition Material Systems Code	100
Adhesive Pre-Coat	Yes

### Dimensions

Inside Diameter Range (Leg 2)	10.7 – 20 mm [.42 – .8 in]
Inside Diameter Range (Body)	15.7 – 30.5 mm [.62 – 1.2 in]
Inside Diameter Range (Leg 1)	15.7 – 30.5 mm [.62 – 1.2 in]

### Usage Conditions

Flammability	Low Fire Hazard
Operating Temperature Range	-30 – 105 °C [-22 – 221 °F]

### Operation/Application

--	--



Emission Features	Halogen-Free
Power Cable Accessory	No

### Other

Molded Part Shape Code	362A
Fluid/Chemical Resistance	Long-Term Exposure at High Temperature
Adhesive Options	/86 Precoat
Breakout & Transition Adhesive Type	High Performance Pre-Coat Adhesive

## Product Compliance

[For compliance documentation, visit the product page on TE.com>](#)

EU RoHS Directive 2011/65/EU	Compliant
EU ELV Directive 2000/53/EC	Compliant
China RoHS 2 Directive MIIT Order No 32, 2016	No Restricted Materials Above Threshold
EU REACH Regulation (EC) No. 1907/2006	Current ECHA Candidate List: JUN 2020 (209) Candidate List Declared Against: JUN 2020 (209) Does not contain REACH SVHC
Halogen Content	Low Halogen - Br, Cl, F, I < 900 ppm per homogenous material. Also BFR/CFR/PVC Free
Solder Process Capability	Not applicable for solder process capability

### Product Compliance Disclaimer

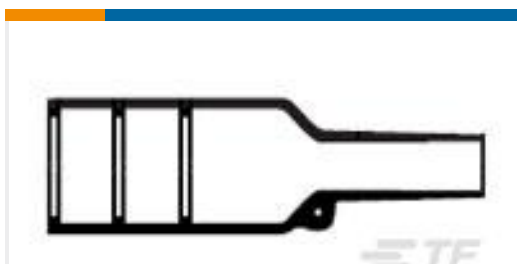
This information is provided based on reasonable inquiry of our suppliers and represents our current actual knowledge based on the information they provided. This information is subject to change. The part numbers that TE has identified as EU RoHS compliant have a maximum concentration of 0.1% by weight in homogenous materials for lead, hexavalent chromium, mercury, PBB, PBDE, DBP, BBP, DEHP, DIBP, and 0.01% for cadmium, or qualify for an exemption to these limits as defined in the Annexes of Directive 2011/65/EU (RoHS2). Finished electrical and electronic equipment products will be CE marked as required by Directive 2011/65/EU. Components may not be CE marked. Additionally, the part numbers that TE has identified as EU ELV compliant have a maximum concentration of 0.1% by weight in homogenous materials for lead, hexavalent chromium, and mercury, and 0.01% for cadmium, or qualify for an exemption to these limits as defined in the Annexes of Directive 2000/53/EC (ELV). Regarding the REACH Regulation, the information TE provides on SVHC in articles for this part number is based on the latest European Chemicals Agency (ECHA) 'Guidance on requirements for substances in articles' posted at this URL: <https://echa.europa.eu/guidance-documents/guidance-on-reach>

## Compatible Parts



TE Part # CJ2087-000  
[HL2010E-KIT-120V](#)

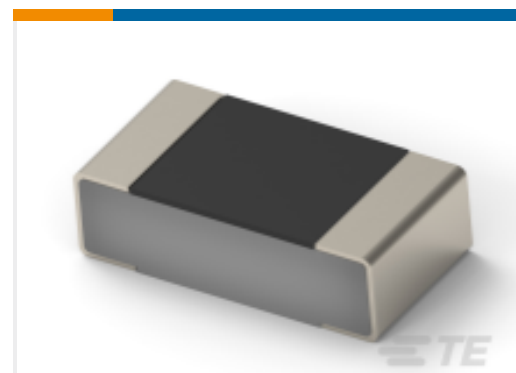
## Customers Also Bought



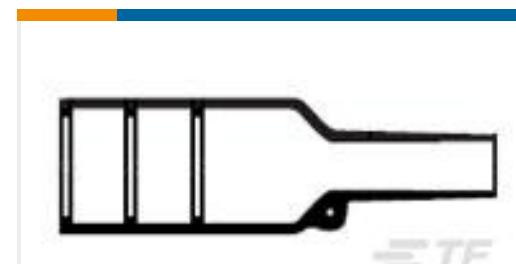
TE Part #061353-000  
[202K232-3/86-0](#)



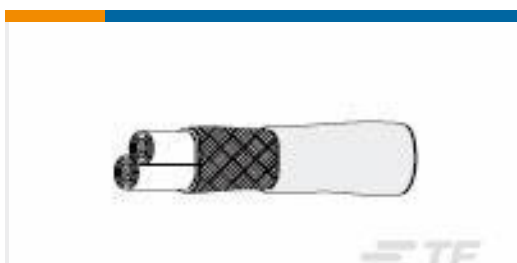
TE Part #0653803001  
[99M0211-16-8](#)



TE Part #3-1879808-1  
[RP 1J 0.1W 11K5 0.1% 15PPM 1K RL](#)



TE Part #344009-000  
[202K185-100-01-0](#)



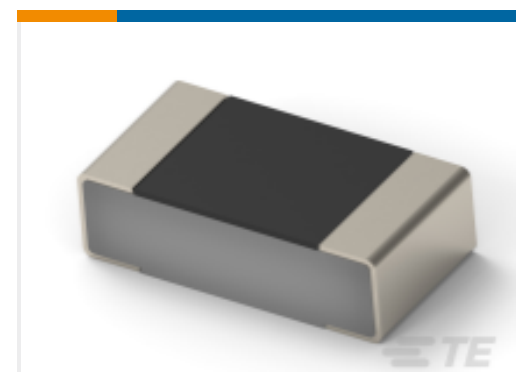
TE Part #3831453001  
[44A1121-22-4/6-9](#)



TE Part #3822453001  
[44A2121-26-0/9-9](#)



TE Part #4381173001  
[99M0211-14-8](#)



TE Part #3-1879808-8  
[RP 1J 0.1W 10R 0.1% 15PPM 1K RL](#)



TE Part #2176367-1  
[RQ 0603 4K64 0.1% 10PPM 1K RL](#)



TE Part #1290613001  
[ZHI35-10-0](#)

## Documents

### Product Drawings

[362A014-100/86-0](#)

English

### Datasheets & Catalog Pages

[1654025\\_Sec4\\_-100](#)

English

[1654025\\_Sec4\\_362A014to114](#)

English



## Raychem Molded Parts Visual Guide

English

---

### Product Environmental Compliance

[Safety Datasheet](#)

[Safety Datasheet](#)

German

[Safety Datasheet](#)

German

[Safety Datasheet](#)

English

[Safety Datasheet](#)

English

[Safety Datasheet](#)

English

[Safety Datasheet](#)

English

[Safety Datasheet](#)

English

[Safety Datasheet](#)

[Safety Datasheet](#)

[Safety Datasheet](#)

French

[Safety Datasheet](#)

French

[Safety Datasheet](#)

[Safety Datasheet](#)

[Safety Datasheet](#)

[Safety Datasheet](#)

[Safety Datasheet](#)

[Safety Datasheet](#)

[Safety Datasheet](#)

## X-ON Electronics

Largest Supplier of Electrical and Electronic Components

*Click to view similar products for [Cable Boots](#) category:*

*Click to view products by [TE Connectivity](#) manufacturer:*

Other Similar products are found below :

[618235-000](#) [622A014-3-0](#) [CX4132-000](#) [879515-000](#) [982033-2](#) [R280576000](#) [1300830729](#) [EN3BOOTLKIT](#) [MTPSRBCL-C](#) [1811481-1](#)  
[200W531-3-0](#) [202A121-386-0](#) [202A142-4-00/42-0](#) [202A163-4-0-CS5067](#) [202B221-13-0](#) [202B231-13-0](#) [202B563-25-07-0](#)  
[202C621710CS5361](#) [202D132-4-07/42-0](#) [202D221-4-0-CS5349](#) [202D221-4-26-0](#) [202D263-25-08-0](#) [202D263-4-22/42-0](#) [202D263-4-88-0](#)  
[202D921-2542-0](#) [202E336-71-0](#) [202F211-50-22-0-CS8474](#) [202F242-50-05-0](#) [202F242-51-04/164-0](#) [202K121-25-CS-1858-0](#) [202K121-25-](#)  
[CS-2062-0](#) [202K132-25-01/225-0CS8387](#) [202K153-3-0186-0](#) [202S132-25-UP-0](#) [203W301-3/42-0](#) [207W613-100/184-0-CS5657](#) [207W623-](#)  
[100-01/184-0](#) [207W634-100/184-0-CS5657](#) [207W656-100-01/184-0](#) [207W667-100-01/184-0](#) [207W667-100/184-0](#) [208A011-3-0](#) [208A021-3-](#)  
[0](#) [221A011-51164-0-CS7133](#) [222A121-2586](#) [222A152-342-0](#) [222A213-25-0-CS5613](#) [222D221-25-13/86-0](#) [222D232-4-61-0-CS5078](#)  
[222D253-100-22-0](#)