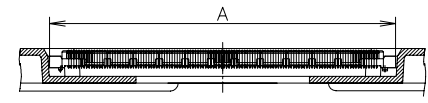
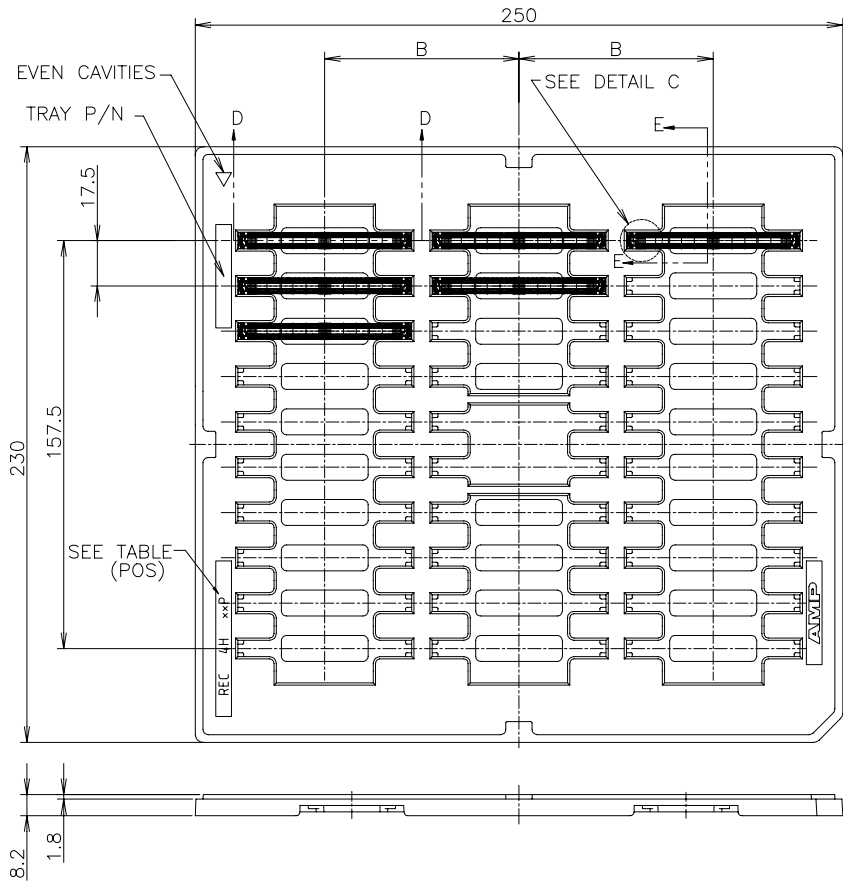
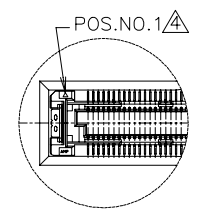


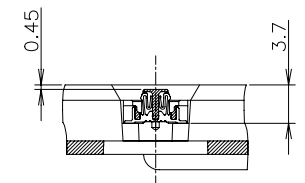
REVISIONS					
P	LTR	DESCRIPTION	DATE	DWN	APVD
	C2	ECN-21-114380:ADD MATED CONDITION	31AUG2021	A.L	H.L



SECT. D-D  
(SCALE 2:1)  
(CONNECTOR NOT SECTION)



DETAIL C  
(SCALE 2:1)

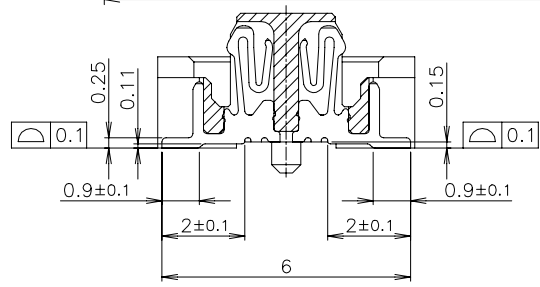
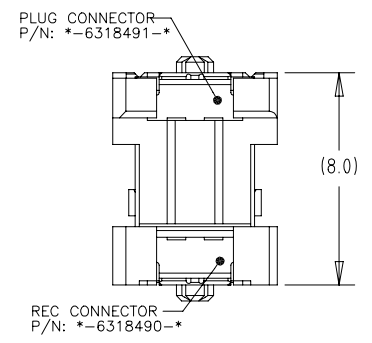
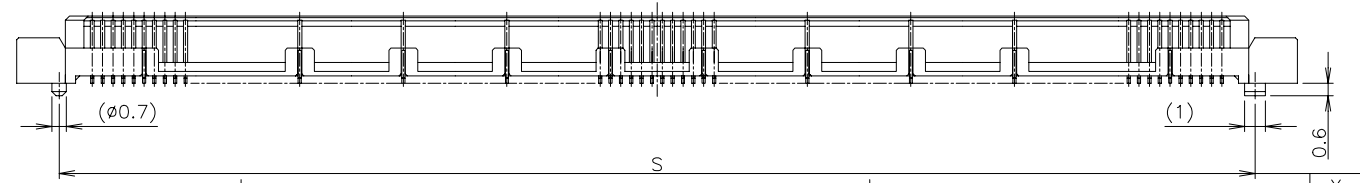
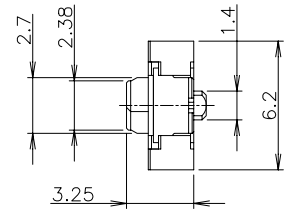
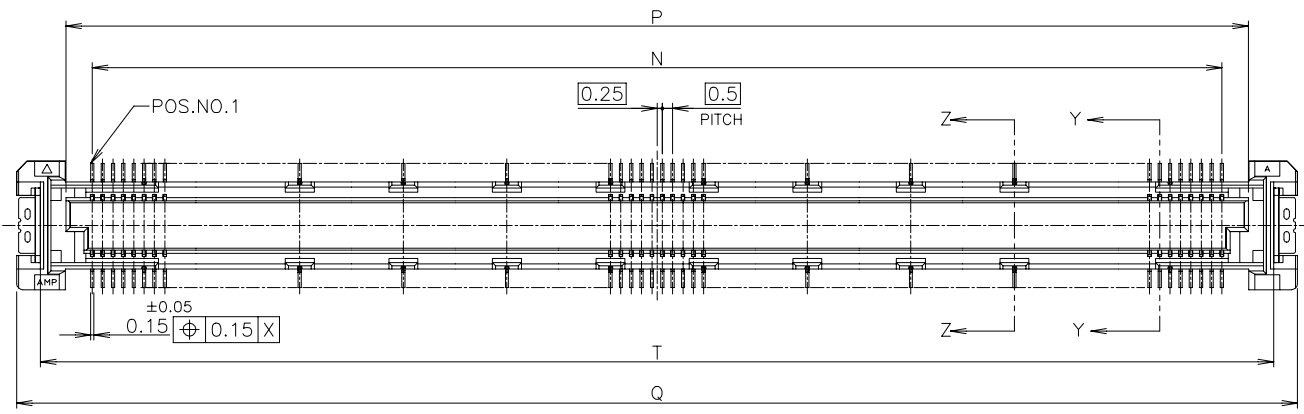


E-E  
(SCALE 2:1)

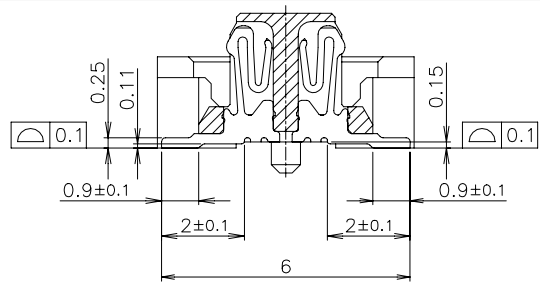
OBSOLETE	YES	3	30	75	61.8	220	8-6318490-6
	NO	3	30	75	61.8	220	3-6318490-6
	SEALANT	ROW	QTY	B	A	POS.	PART NO.

THIS DRAWING IS A CONTROLLED DOCUMENT.		DWN BILL LV 15OCT10	TE Connectivity Ltd.	
		CHK MARTIN LI 15OCT10		
DIMENSIONS: MM 		APVD STEVEN YAO 15OCT10	NAME	
TOLERANCES UNLESS OTHERWISE SPECIFIED: 0 PLC ± 0.25 1 PLC ± 0.15 2 PLC ± 0.10 3 PLC ± 0.05 4 PLC ± 0.0250 ANGLES ± 3°		PRODUCT SPEC 108-5560	HARD TRAY ASSY FH 0.5BTB CONNECTOR 220POS REC 4H WITH GROUND PLATE	
MATERIAL		FINISH	APPLICATION SPEC	RESTRICTED TO
		WEIGHT	SIZE A3	CAGE CODE 00779
		CUSTOMER DRAWING	DRAWING NO C=6318490	REV C2
			SCALE 1:2	SHEET 1 OF 3

REVISIONS					
P	LTR	DESCRIPTION	DATE	DWN	APVD
-	-	SEE SHEET 1	-	-	-



SECT. Z-Z  
(GROUND POSITION)  
(SCALE 8:1)



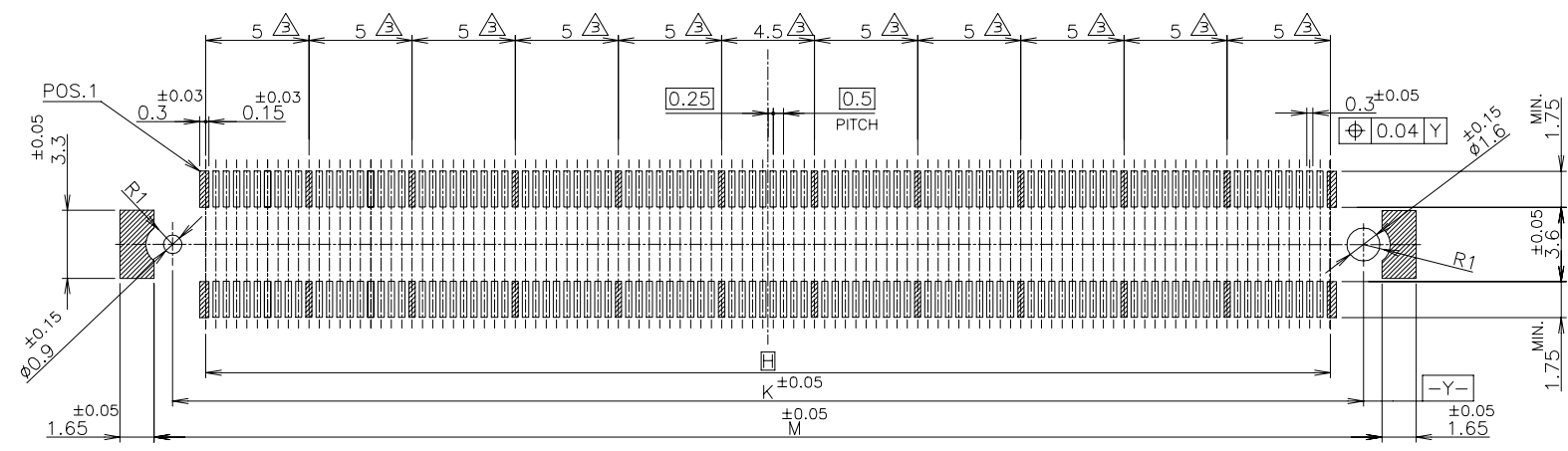
SECT. Y-Y  
(SIGNAL POSITION)  
(SCALE 8:1)

Ⓢ FULL-MATED CONDITION

OBSOLETE	59.5	57.7	61.8	57.1	54.5	220	BLACK	8-6318490-6
	59.5	57.7	61.8	57.1	54.5	220	BLACK	3-6318490-6
	T	S	Q	P	N	POS.	HSG COLOR	PART NO.

THIS DRAWING IS A CONTROLLED DOCUMENT.		DWN	TE Connectivity Ltd.		
		CHK			
DIMENSIONS: MM 		APVD	NAME HARD TRAY ASSY FH 0.5BTB CONNECTOR 220POS REC 4H WITH GROUND PLATE		
TOLERANCES UNLESS OTHERWISE SPECIFIED: 0 PLC ± 0.25 1 PLC ± 0.15 2 PLC ± 0.10 3 PLC ± 0.05 4 PLC ± 0.0250 ANGLES ± 3°		PRODUCT SPEC			
MATERIAL 1		APPLICATION SPEC	SIZE A3	CAGE CODE 00779	DRAWING NO. C=6318490
FINISH 2		WEIGHT	RESTRICTED TO		
		CUSTOMER DRAWING	SCALE 4:1	SHEET 2 OF 3	REV C2

REVISIONS					
P	LTR	DESCRIPTION	DATE	DWN	APVD
-	-	SEE SHEET 1	-	-	-



REFERENCE P.C.BOARD LAYOUT

NOTES

- △ MATERIAL : HOUSING : HIGH TEMP THERMO PLASTIC UL94V-0  
CONTACT : COPPER ALLOY  
SOLDER PEG : COPPER ALLOY
- △ FINISH : MEETS THE PERFORMANCE REQUIREMENTS  
OF PRODUCT SPECIFICATION 108-5560  
SOLDER TAIL OF SIGNAL & GROUND CONTACTS : GOLD FLASH;  
SOLDER PEG : TIN OVER NI
- △ THIS POSITION IS GROUND CIRCUIT.
- △ THE PRODUCT WAS COATED BY FLUX-PENETRATION-INHIAITING AGENT.

<del>OBSOLETE</del>	59.5	57.7	54.5	220	8-6318490-6
	59.5	57.7	54.5	220	3-6318490-6
	M	K	H	POS	PART NO.

THIS DRAWING IS A CONTROLLED DOCUMENT.		DWN	TE Connectivity Ltd.					
DIMENSIONS: MM		CHK				HARD TRAY ASSY FH 0.5BTB CONNECTOR 220POS REC 4H WITH GROUND PLATE		
TOLERANCES UNLESS OTHERWISE SPECIFIED:		APVD						
0 PLC ± 0.25 1 PLC ± 0.15 2 PLC ± 0.10 3 PLC ± 0.05 4 PLC ± 0.0250 ANGLES ± 3°		PRODUCT SPEC						
MATERIAL		APVD						
FINISH		APVD	SIZE CAGE CODE DRAWING NO A3 00779 C=6318490					
		APVD	RESTRICTED TO					
		APVD	CUSTOMER DRAWING					
		APVD	SCALE 4:1 SHEET 3 OF 3 REV C2					

## X-ON Electronics

Largest Supplier of Electrical and Electronic Components

*Click to view similar products for [Board to Board & Mezzanine Connectors](#) category:*

*Click to view products by [TE Connectivity](#) manufacturer:*

Other Similar products are found below :

[589158040000018](#) [MDF7C-18P-2.54DSA\(55\)](#) [FCN-230C068-11](#) [FCN-268F012-G/BD](#) [FCN-268F036-G/BD](#) [FCN-268M012-G/0D](#) [FCN-268M024-G/1D](#) [FCN-723J004/1](#) [MIS-048-01-F-D-DP-K](#) [832-10-034-10-001000](#) [FX4C-80S-1.27DSA](#) [FCN-214Q030-G/0](#) [FCN-234P048-G/0](#) [FCN-235D050-G/C](#) [210-93-314-41-105000](#) [2-22603-0](#) [MDF7-40DP-2.54DSA\(55\)](#) [AXG720047](#) [5031084030](#) [MIT-114-03-F-D-K](#) [55323-1519](#) [DF33-2P-3.3DSA\(24\)](#) [YFT-20-05-H-03-SB-K](#) [503308-3040](#) [026-6203-PDB](#) [027-6203-PDB](#) [069159702701000](#) [10123981-102LF](#) [101A10019X](#) [55650-0588-C](#) [68682-310LF](#) [68684-306](#) [75140-7012](#) [87471-650](#) [194261-1](#) [FCN-268F024-G0D](#) [10124054-515LF](#) [68685-603](#) [8-1616154-3](#) [MIS-019-01-F-D](#) [541371078](#) [IL-WX-10PB-HF-B-E1000E](#) [FCN-268M024-G/3D](#) [20021832-06016C1LF](#) [KX15-20KLDL-E1000E](#) [MDF7-16DP-2.54DSA\(55\)](#) [AXE810124](#) [FCN-214J100-G/0](#) [FCN-230C068-E/S](#) [AXE812124](#)