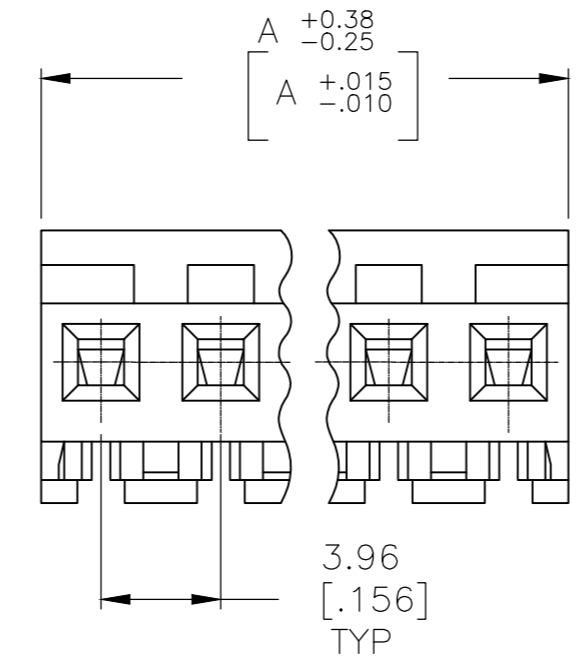
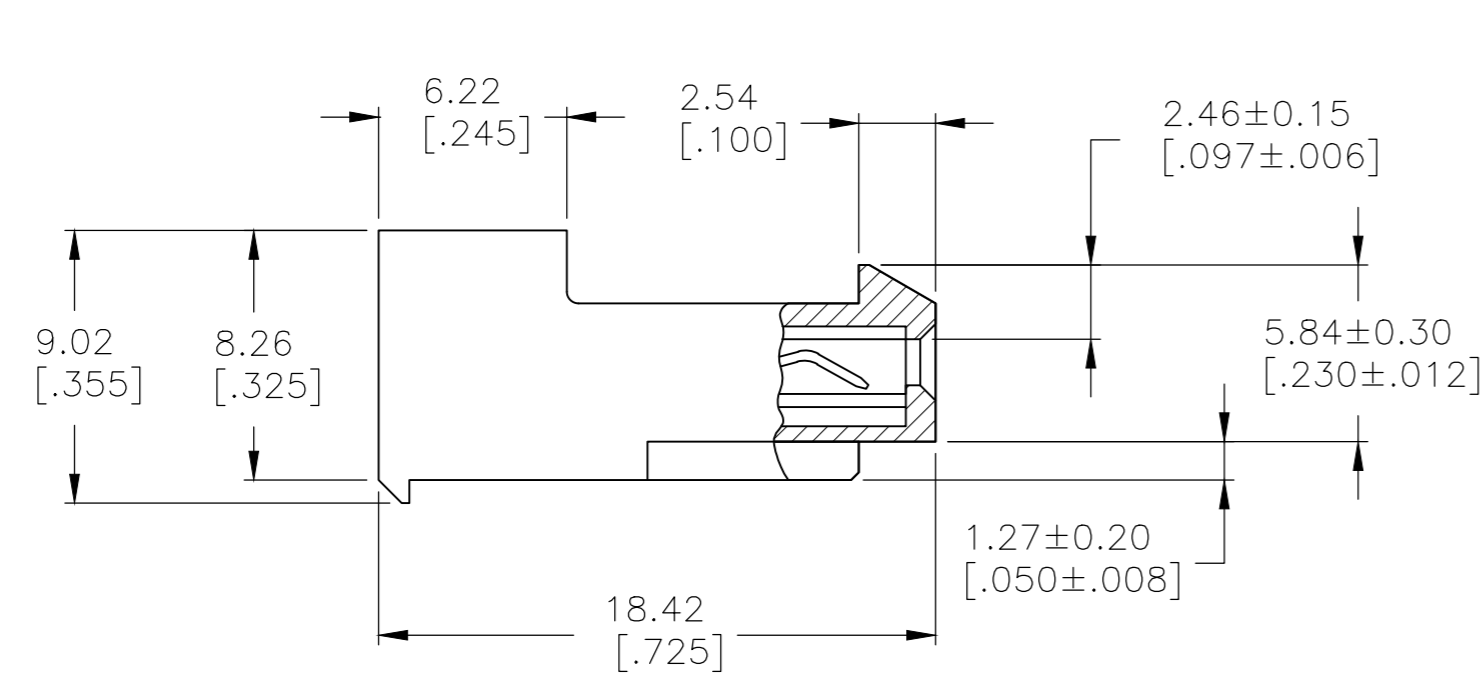
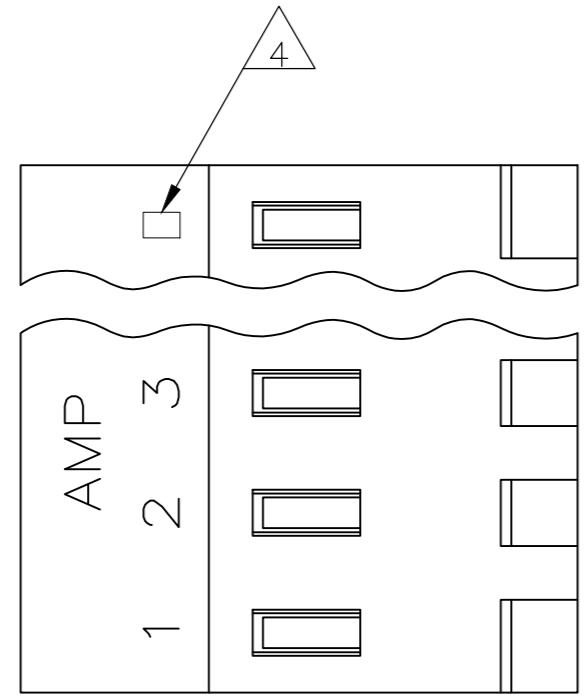


THIS DRAWING IS UNPUBLISHED. RELEASED FOR PUBLICATION  
 © COPYRIGHT - By - TE CONNECTIVITY ALL RIGHTS RESERVED.

LOC	DIST	REVISIONS			
P	LTR	DESCRIPTION	DATE	DWN	APVD
CM	00	S3	REVISED PER ECR-17-018174	08MAY2018	BDA SG



95.10[3.744]	24	5-640428-4
91.13[3.588]	23	5-640428-3
87.17[3.432]	22	5-640428-2
83.21[3.276]	21	5-640428-1
79.25[3.120]	20	5-640428-0
75.29[2.964]	19	4-640428-9
71.32[2.808]	18	4-640428-8
67.36[2.652]	17	4-640428-7
63.40[2.496]	16	4-640428-6
59.44[2.340]	15	4-640428-5
55.47[2.184]	14	4-640428-4
51.51[2.028]	13	4-640428-3
47.55[1.872]	12	4-640428-2
43.59[1.716]	11	4-640428-1
39.62[1.560]	10	4-640428-0
35.66[1.404]	9	3-640428-9
31.70[1.248]	8	3-640428-8
27.74[1.092]	7	3-640428-7
23.77[.936]	6	3-640428-6
19.81[.780]	5	3-640428-5
15.85[.624]	4	3-640428-4
11.89[.468]	3	3-640428-3
7.92[.312]	2	3-640428-2

1 MATERIAL: CONNECTOR - NYLON UL94-V2 (RED).  
 CONTACTS - 0.30[.012] THICK COPPER ALLOY  
 (BRIGHT TIN-LEAD 0.00203[.000080] MIN. THICK  
 FOR CONTACTS 640428-2 THRU 2-640428-4).  
 (MATTE WHISKER MITIGATED TIN 0.00203[.000080]  
 MIN. THICKNESS OVER NICKEL UNDERPLATE FOR  
 3-640428-2 THRU 5-640428-4).

2 CONTACTS ACCEPT 22 AWG WIRE WITH 2.41[.095] MAX  
 INSULATION DIAMETER.

3 CONTACTS MUST ACCEPT 1.14±0.03[.045]  
 POST AND REMAIN LOCKED IN POSITION.

4 IDENTIFICATION NUMBER FOR LAST CIRCUIT MAY  
 NOT APPEAR ON ALL ASSEMBLIES.

5 DIMENSIONS IN BRACKETS ARE IN INCHES.

6 HOUSING FEATURES ARE: CLOSED END WITH LOCKING  
 RAMP.

7 OBSOLETE PARTS: OBSOLETE CIS STREAMLINING PER D.RENAUD/D.SINISI

8 OBSOLETE PARTS:

8	SUPERCEDED BY 5-640428-4	95.10[3.744]	24	2-640428-4
8	SUPERCEDED BY 5-640428-3	91.13[3.588]	23	2-640428-3
8	SUPERCEDED BY 5-640428-2	87.17[3.432]	22	2-640428-2
8	SUPERCEDED BY 5-640428-1	83.21[3.276]	21	2-640428-1
8	SUPERCEDED BY 5-640428-0	79.25[3.120]	20	1-640428-0
8	SUPERCEDED BY 4-640428-9	75.29[2.964]	19	1-640428-9
8	SUPERCEDED BY 4-640428-8	71.32[2.808]	18	1-640428-8
8	SUPERCEDED BY 4-640428-7	67.36[2.652]	17	1-640428-7
8	SUPERCEDED BY 4-640428-6	63.40[2.496]	16	1-640428-6
8	SUPERCEDED BY 4-640428-5	59.44[2.340]	15	1-640428-5
8	SUPERCEDED BY 4-640428-4	55.47[2.184]	14	1-640428-4
8	SUPERCEDED BY 4-640428-3	51.51[2.028]	13	1-640428-3
8	SUPERCEDED BY 4-640428-2	47.55[1.872]	12	1-640428-2
8	SUPERCEDED BY 4-640428-1	43.59[1.716]	11	1-640428-1
	OBSOLETE	39.62[1.560]	10	1-640428-0
8	SUPERCEDED BY 3-640428-9	35.66[1.404]	9	-640428-9
8	SUPERCEDED BY 3-640428-8	31.70[1.248]	8	-640428-8
8	SUPERCEDED BY 3-640428-7	27.74[1.092]	7	-640428-7
8	SUPERCEDED BY 3-640428-6	23.77[.936]	6	-640428-6
8	SUPERCEDED BY 3-640428-5	19.81[.780]	5	-640428-5
8	SUPERCEDED BY 3-640428-4	15.85[.624]	4	-640428-4
8	SUPERCEDED BY 3-640428-3	11.89[.468]	3	-640428-3
8	SUPERCEDED BY 3-640428-2	7.92[.312]	2	-640428-2

THIS DRAWING IS A CONTROLLED DOCUMENT.		DWN K. WHITAKER 12SEP2005	TE Connectivity	
DIMENSIONS: mm [INCHES]		CHK D. BOSSI 12SEP2005	NAME	
TOLERANCES UNLESS OTHERWISE SPECIFIED: 0 PLC ± - 1 PLC ± - 2 PLC ± - 3 PLC ± 0.13 [.005] 4 PLC ± - ± 0°30'		APVD D. BOSSI 12SEP2005	MTA 156 CUSTOMER ASSEMBLY, 22 AWG STANDARD	
MATERIAL		PRODUCT SPEC	SIZE A2	CAGE CODE 00779
FINISH		APPLICATION SPEC	DRAWING NO C-640428	RESTRICTED TO
CUSTOMER DRAWING		WEIGHT	SCALE 4:1	SHEET 1 of 1
			REV S3	

## X-ON Electronics

Largest Supplier of Electrical and Electronic Components

*Click to view similar products for [Terminal Block Tools & Accessories](#) category:*

*Click to view products by [TE Connectivity](#) manufacturer:*

Other Similar products are found below :

[1029563](#) [00171430102](#) [00171420102](#) [014415](#) [CSTSPC1-2](#) [9-1437653-4](#) [928358-1](#) [QC209/J](#) [HCL10-6](#) [1437403-6](#) [1437403-9](#) [1437403-8](#)  
[147832-1](#) [EC0037-000](#) [MT2/H--](#) [MT2/H-32](#) [MT6/H-N](#) [MT6/V-GRND](#) [MT8/H-101-110](#) [BB2-09BF](#) [EP2.5/4UN/BG](#) [1707755](#) [1735590](#)  
[1755480](#) [1760336](#) [BO3-02](#) [1789281](#) [1840227](#) [1840230](#) [1893164](#) [2-1437402-1](#) [2-1437644-9](#) [JB2-09/J](#) [2202307](#) [2302463](#) [2305949](#) [2310581](#)  
[8TK2-24](#) [91.201.1](#) [L2U2](#) [2778.0](#) [2890137](#) [2901107](#) [2901123](#) [2901699](#) [2MP/J](#) [2MV-06](#) [1705126](#) [1756294](#) [F03-25](#)