

THIS DRAWING IS UNPUBLISHED. RELEASED FOR PUBLICATION
 © COPYRIGHT - By - ALL RIGHTS RESERVED.

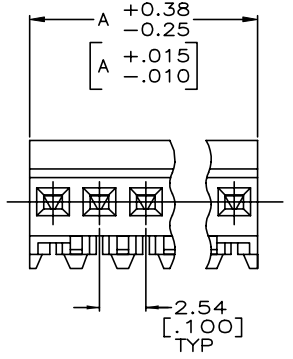
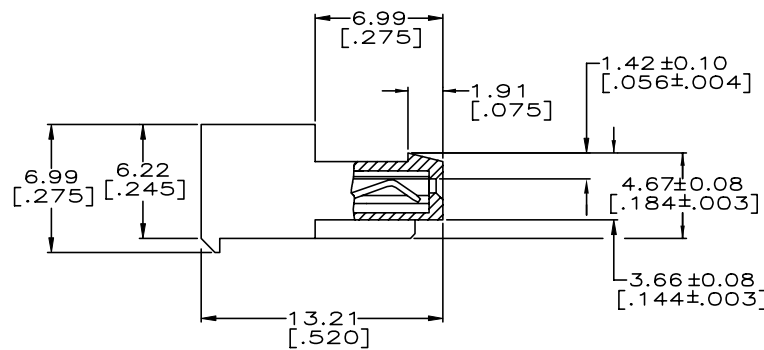
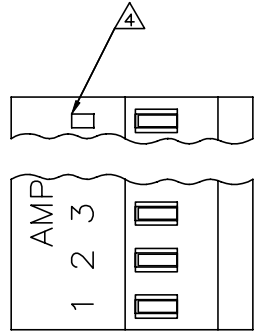
LOC		DIST		REVISIONS			
CM	00	P	LTR	DESCRIPTION	DATE	DWN	APVD
		Y		REVISED PER ECR-20-000727	22MAY2020	PC	SW

YES	71.12	[2.800]	28	5-640443-8
YES	68.58	[2.700]	27	5-640443-7
YES	66.04	[2.600]	26	5-640443-6
YES	63.50	[2.500]	25	5-640443-5
YES	60.96	[2.400]	24	5-640443-4
YES	58.42	[2.300]	23	5-640443-3
YES	55.88	[2.200]	22	5-640443-2
YES	53.34	[2.100]	21	5-640443-1
YES	50.80	[2.000]	20	5-640443-0
YES	48.26	[1.900]	19	4-640443-9
YES	45.72	[1.800]	18	4-640443-8
YES	43.18	[1.700]	17	4-640443-7
YES	40.64	[1.600]	16	4-640443-6
YES	38.10	[1.500]	15	4-640443-5
YES	35.56	[1.400]	14	4-640443-4
YES	33.02	[1.300]	13	4-640443-3
YES	30.48	[1.200]	12	4-640443-2
YES	27.94	[1.100]	11	4-640443-1
YES	25.40	[1.000]	10	4-640443-0
YES	22.86	[.900]	9	3-640443-9
YES	20.32	[.800]	8	3-640443-8
YES	17.78	[.700]	7	3-640443-7
YES	15.24	[.600]	6	3-640443-6
YES	12.70	[.500]	5	3-640443-5
YES	10.16	[.400]	4	3-640443-4
YES	7.62	[.300]	3	3-640443-3
YES	5.08	[.200]	2	3-640443-2

NO	71.12	[2.800]	28	2-640443-8	SUPERCEDED BY 5-640443-8
NO	68.58	[2.700]	27	2-640443-7	SUPERCEDED BY 5-640443-7
NO	66.04	[2.600]	26	2-640443-6	SUPERCEDED BY 5-640443-6
NO	63.50	[2.500]	25	2-640443-5	SUPERCEDED BY 5-640443-5
NO	60.96	[2.400]	24	2-640443-4	SUPERCEDED BY 5-640443-4
NO	58.42	[2.300]	23	2-640443-3	SUPERCEDED BY 5-640443-3
NO	55.88	[2.200]	22	2-640443-2	SUPERCEDED BY 5-640443-2
NO	53.34	[2.100]	21	2-640443-1	SUPERCEDED BY 5-640443-1
NO	50.80	[2.000]	20	2-640443-0	SUPERCEDED BY 5-640443-0
NO	48.26	[1.900]	19	1-640443-9	SUPERCEDED BY 4-640443-9
NO	45.72	[1.800]	18	1-640443-8	SUPERCEDED BY 4-640443-8
NO	43.18	[1.700]	17	1-640443-7	SUPERCEDED BY 4-640443-7
NO	40.64	[1.600]	16	1-640443-6	SUPERCEDED BY 4-640443-6
NO	38.10	[1.500]	15	1-640443-5	SUPERCEDED BY 4-640443-5
NO	35.56	[1.400]	14	1-640443-4	SUPERCEDED BY 4-640443-4
NO	33.02	[1.300]	13	1-640443-3	SUPERCEDED BY 4-640443-3
NO	30.48	[1.200]	12	1-640443-2	SUPERCEDED BY 4-640443-2
NO	27.94	[1.100]	11	1-640443-1	SUPERCEDED BY 4-640443-1
NO	25.40	[1.000]	10	1-640443-0	SUPERCEDED BY 4-640443-0
NO	22.86	[.900]	9	640443-9	SUPERCEDED BY 3-640443-9
NO	20.32	[.800]	8	640443-8	SUPERCEDED BY 3-640443-8
NO	17.78	[.700]	7	640443-7	SUPERCEDED BY 3-640443-7
NO	15.24	[.600]	6	640443-6	SUPERCEDED BY 3-640443-6
NO	12.70	[.500]	5	640443-5	SUPERCEDED BY 3-640443-5
NO	10.16	[.400]	4	640443-4	SUPERCEDED BY 3-640443-4
NO	7.62	[.300]	3	640443-3	SUPERCEDED BY 3-640443-3
NO	5.08	[.200]	2	640443-2	SUPERCEDED BY 3-640443-2

LEADFREE DIM A NO. OF CIRCUITS PART NO.

- 1 MATERIAL: CONNECTOR - NYLON UL94V-2 (GREEN).
CONTACTS - 0.30[.012] THICK COPPER ALLOY
BRIGHT TIN-LEAD .00203[.000080] MIN THICKNESS
FOR 640443-2 THRU 2-640443-8.
MATTE WHISKER MITIGATED TIN .00203[.000080] MIN THICKNESS OVER
NICKEL UNDERPLATE FOR 3-640443-2 THRU 5-640443-8.
- 2 CONTACTS ACCEPT 28 AWG WIRE WITH 1.52[.060] MAX
INSULATION DIAMETER.
- 3 CONTACTS MUST ACCEPT 0.64±0.03[.025±.001]
POST AND REMAIN LOCKED IN POSITION.
- 4 IDENTIFICATION NUMBER FOR LAST CIRCUIT MAY
NOT APPEAR ON ALL ASSEMBLIES.
- 5 DIMENSIONS IN BRACKETS ARE IN INCHES.
- 6 HOUSING FEATURES ARE: CLOSED END WITH LOCKING RAMP
- 7 OBSOLETE PARTS



THIS DRAWING IS A CONTROLLED DOCUMENT.		DWN S. CARPENTER 11JUN2003	TE Connectivity	
DIMENSIONS: mm [INCHES]		CHK D. BOSSI 11JUN2003	NAME	
TOLERANCES UNLESS OTHERWISE SPECIFIED:		APVD D. BOSSI 11JUN2003	PRODUCT SPEC	
0 PLC ±	1 PLC ±	108-1050		
2 PLC ±	3 PLC ±	APPLICATION SPEC		
4 PLC ±	5 PLC ±	114-1019		
MATERIAL		SIZE	CAGE CODE	DRAWING NO
FINISH		A2	00779	640443
RESTRICTED TO		CUSTOMER DRAWING		
SCALE		5:1		
SHEET		1 of 1		
REV		Y		

X-ON Electronics

Largest Supplier of Electrical and Electronic Components

Click to view similar products for [Headers & Wire Housings](#) category:

Click to view products by [TE Connectivity](#) manufacturer:

Other Similar products are found below :

[57102-F02-18ULF](#) [58102-G61-06LF](#) [582553-1](#) [0009485154](#) [009176003701906](#) [0050291907](#) [00-9021-0611-00-339](#) [02.125.8002.8](#) [609-3404](#)
[61062-3](#) [622-0430](#) [622-3653LF](#) [63453-116](#) [636-1030](#) [636-1427](#) [636-3427](#) [636-4007](#) [641938-9](#) [65495-038](#) [65692-001LF](#) [65781-018](#) [65781-](#)
[047](#) [65817-015LF](#) [66207-023LF](#) [67016-026LF](#) [67095-007LF](#) [68631-112](#) [68645-018](#) [68648-049](#) [699319-000](#) [M90C108951C](#) [70.362.1628.0](#)
[70-4210](#) [70-4226B](#) [70-4853B](#) [707-5020](#) [707-5028](#) [71.350.2428.0](#) [71961-016LF](#) [733-134](#) [754199-000](#) [760-3052](#) [787-8014-00](#) [FCN-367T-](#)
[T012/H](#) [80.063.4001.1](#) [800-90-001-10-001000](#) [801-43-002-10-013000](#) [801-43-006-10-002000](#) [803-41-018-10-001000](#) [803-43-014-20-001000](#)