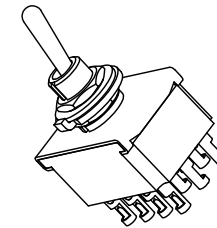
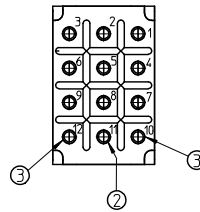
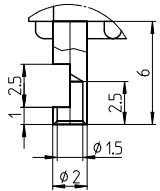
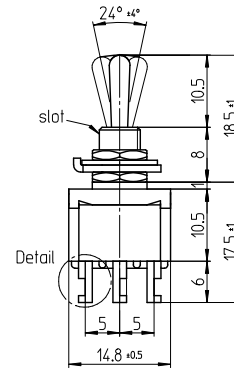
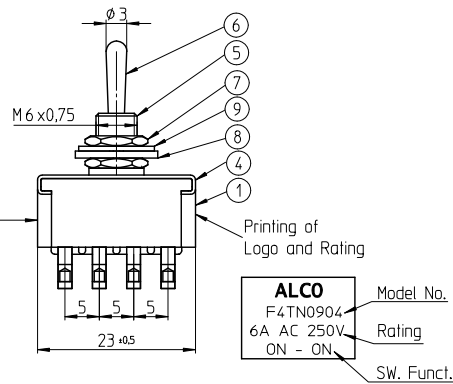


Detail  
Scale 5:1



Function Chart		
3 2 1	3 2 1	3 2 1
6 5 4	6 5 4	6 5 4
9 8 7	9 8 7	9 8 7
12 11 10	12 11 10	12 11 10
ON	NONE	ON
ON	ON	ON
NONE: no mechanical position		

TE PN	Part	1	2	3
3-6437630-5	F4TN0904	ON	NONE	ON
3-6437630-6	F4TPA0904	ON	ON	ON



Date Code Printing  
last digit of year  
A-L = January to December  
Day

Printing of  
Logo and Rating

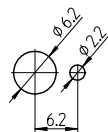
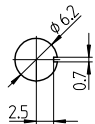
Notes:

Operating temperature -20°C to +70°C

All materials and finishes comply with RoHS directive

Panel Cutout

Panel Cutout  
using Ring

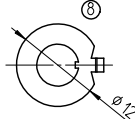


Nut



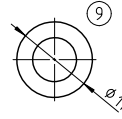
1.5 thick

Ring



1 thick

L washer



0.63 thick

Specifications

TE PN	Part	Rating	Initial Contact Resistance	Insulation Resistance	Dielectric Strength	Endurance
3-6437630-5	F4TN0904	AC 125V 6A	MAX 10 milliohms at DC 2 ~ 4V 1A	MIN 1000 M Ohms at DC 500V	AC 1kV/1 min (AC 1.2kV/1 sec)	electrically 20,000 cycles at 20 cycles/min (rated load resistive) mechanically 50,000 cycles at 20 cycles/min
3-6437630-6	F4TPA0904	AC 250V 6A				

Materials Chart

Part No.	Part Name	MATERIAL/SURFACE	OPTIONAL DESCRIPTION
1	Case	Polyester Resin	
2	F Contact	99.98% silver + C3602BD	Ep-Cu/Ni3,AuFb
3	Common	C3602BD	Ep-Cu/Ni3,AuFb
4	Frame	SUS	
5	Bushing	C3602BD	Ep-Cu/Ni3b
6	Actuator	C3602BD	Ep-Cu/Ni3,Cr1b
7	Nut	C3602BD	Ep-Cu/Ni3b
8	Ring	SPCC	Ep-Fe/Cu2,Ni3b
9	L washer	SK-5	Ep-Fe/Cu2,Ni4b

TOLERANCES UNLESS OTHERWISE SPECIFIED ACCORDING TO ISO 8015 and ISO 2768-1  
 DIMENSIONS: mm  
 test dimen. / Prüfmaß: ( ), auxiliary dimen. / Hilfsmaß: ( ), theor. dimen. / theor. Maß: ( ),  
 production control dimen. / Fertigungs-kontr.maß: [ ], dimen. for measure. technology / messtechn. rel. Maß: [ ]

PART LIST		DEPARTMENT	
DRAWER	03.012007 SA008712	D&E	
CHECKED			
APPROVED			

ECR-NO.: DATE: NAME: INFO: DWG NO.:  
 SCALE: NAME: **Toggle Switch quad. pole** ©=1968517  
 Standard Lever Customer Drawing

REPLACEMENT FOR: DWG LOC NO.: IF SHEET: 1 OF 1 REVISION: A A 2

THIS DRAWING IS A CONTROLLED DOCUMENT. HANDWRITTEN CHANGES ARE NOT ALLOWED

THIS INFORMATION IS CONFIDENTIAL AND PROPRIETARY TO TYCO ELECTRONICS AUSTRIA GMBH AND ITS WORLDWIDE SUBSIDIARIES AND AFFILIATES. IT MAY NOT BE DISCLOSED TO ANYONE OTHER THAN TYCO ELECTRONICS PERSONNEL, WITHOUT WRITTEN AUTHORIZATION FROM TYCO ELECTRONICS AUSTRIA.

## X-ON Electronics

Largest Supplier of Electrical and Electronic Components

*Click to view similar products for [Toggle Switches](#) category:*

*Click to view products by [TE Connectivity](#) manufacturer:*

Other Similar products are found below :

[A19HV](#) [8A1-C-222](#) [60012L](#) [6006L](#) [6663](#) [7101MD9V30GE](#) [7101SPDV30BE](#) [7103SDV30BE](#) [7105D](#) [7108P3YAV2BE](#) [71YY50282](#)  
[7201MD9AVBE](#) [7301K38](#) [7306K36](#) [7310K36](#) [7314K36](#) [7506K4](#) [7592K6](#) [7691K14](#) [7700K1](#) [8396K108](#) [8824K14](#) [8828K13](#) [G2VX](#) [G3VX](#)  
[PS83-121G](#) [A101MD9AB04](#) [A101SD9AB04](#) [A101SDCQ04](#) [A103SD9AQ04](#) [A107TZB04](#) [A123P32YZQ](#) [A123S1YZG](#) [A127S1YCQ](#) [1-](#)  
[1825192-0](#) [A131S1YZQ](#) [A201SCWZB04](#) [A207SYCB04](#) [A208J61ZQ0004](#) [A221K12KAG](#) [A221S1YZQ](#) [A221T1TCQ](#) [A232K12KZQ](#)  
[A232M1YCQ](#) [A323S1CWZQ](#) [A423S1CWZG-M8](#) [A423S1YZQ](#) [12149A-3V](#) [12156AX408](#) [12147AGKX679](#)