

4

3

2

1

THIS DRAWING IS UNPUBLISHED.

RELEASED FOR PUBLICATION

,1997 .

LOC
DS

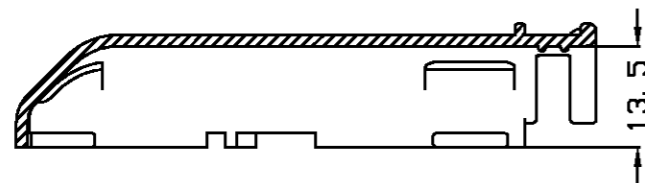
DIST

REVISIONS

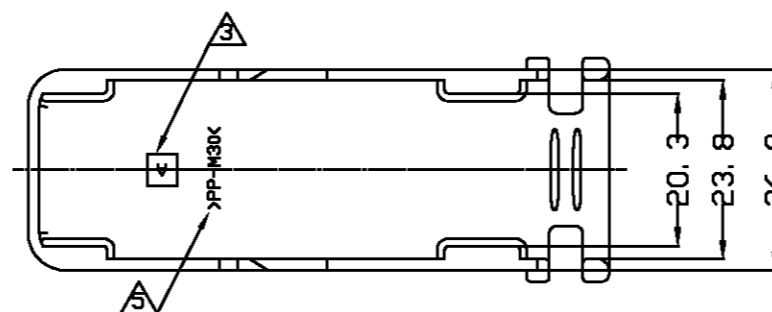
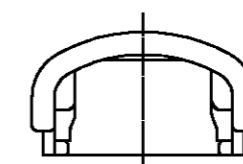
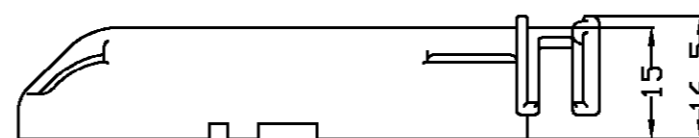
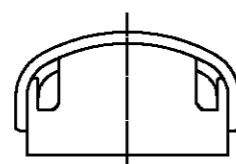
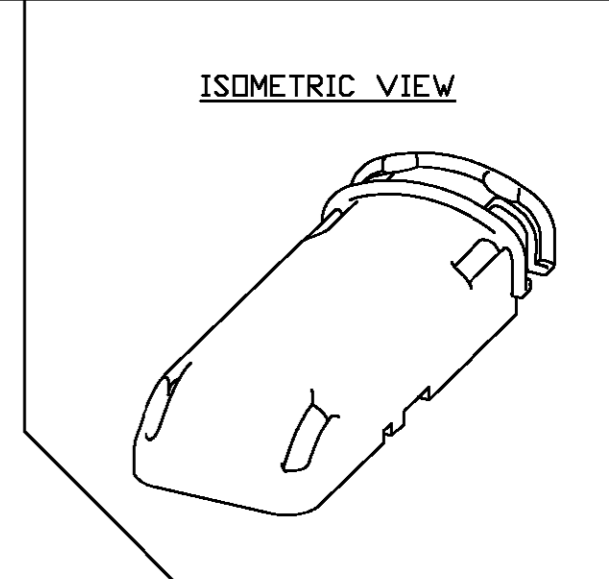
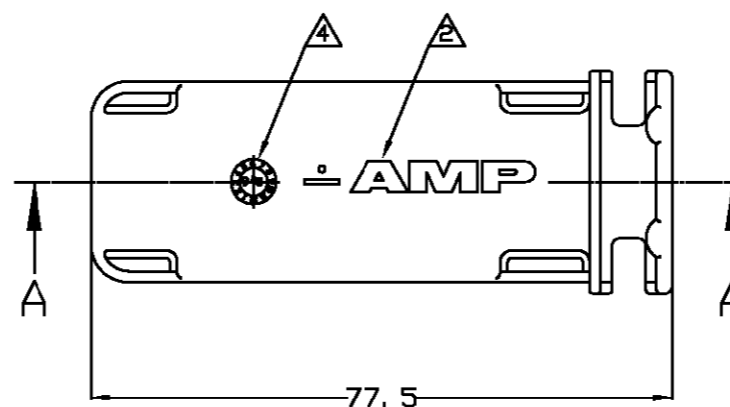
© COPYRIGHT 1997

BY AMP INCORPORATED. ALL RIGHTS RESERVED.

P	LTR	DESCRIPTION	DATE	DWN	APVD
	0	RELEASED ECN(KFC00-0016-99)	03/FEB/99	JW	CS



SECTION A-A



NOTE.

- 1. APPLICABLE ASS'Y CONNECTOR FOR JPT&MQS 81Pos. P/N: 368190-1
- △ AMP TREAD MARK.
- △ CAVITY MARK
- △ DATE CODE.
- △ RECYCLE MARKING.

3 6 8 2 9 1 - 1	PP-M30	BLACK
PART NO	MATERIAL	COLOR

DIMENSIONS: MM		TOLERANCES UNLESS OTHERWISE SPECIFIED:		DWN		AMP AMP KOREA. kyungsan, korea	
 3rd ANGLE PROJECTION		0 <XX<10 ± 0.2 10<XX<30 ± 0.25 30<XX ± 0.3 ANGLES ± 3°		CHK		NAME COVER HOUSING FOR 81 Pos.	
				APVD			
MATERIAL SEE TABLE		FINISH SEE TABLE		PRODUCT SPEC ---		SIZE A3	
				APPLICATION SPEC ---		CAGE CODE 00779	
				WEIGHT ---		DRAWING NO C- 3 6 8 2 9 1	
						SCALE 1/1 SHEET 1 OF 1 REV 0	

X-ON Electronics

Largest Supplier of Electrical and Electronic Components

Click to view similar products for [RF Connector Accessories](#) category:

Click to view products by [TE Connectivity](#) manufacturer:

Other Similar products are found below :

[89674-0712](#) [FERRULE-174](#) [R125802000](#) [R141802000](#) [R141842000](#) [R141862000W](#) [R280752000](#) [R280907000](#) [RFI75-3](#) [RFI77-14](#)
[AX102907](#) [HP-500](#) [2098-3251-94](#) [KA-81-05](#) [89674-0805](#) [FERRULE-223](#) [202102-11](#) [213337-1](#) [R280468000](#) [R280510000](#) [RFI25-12-D3](#)
[RFI25-5](#) [RFI75-2-D2](#) [RFI77-6](#) [RFI97-14](#) [3550 04 K00](#) [360HS001M2508M6](#) [4-1532137-4](#) [HRM-514S\(40\)](#) [XC0600B-03P](#) [5-21085-0](#)
[111062-0490](#) [112122-SOD-LUG](#) [IPP-2014](#) [RFI95-14-D2](#) [LPTW2TP-124](#) [MX-913/U\(45\)](#) [1736-1511-075](#) [32Z112-000F](#) [000-78400](#) [78_Z-7-](#)
[3-4](#) [56Z112-000N](#) [RFI75-2-D3](#) [32Z111-000L5](#) [RG6WRO](#) [47140003A](#) [RFI75-2-D4](#) [RFI25-3-D3](#) [53919000B](#) [R280469010](#)