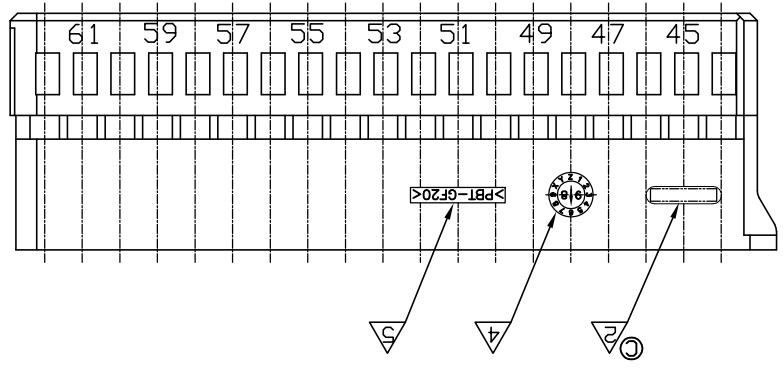
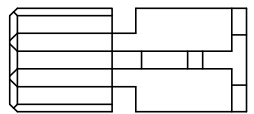
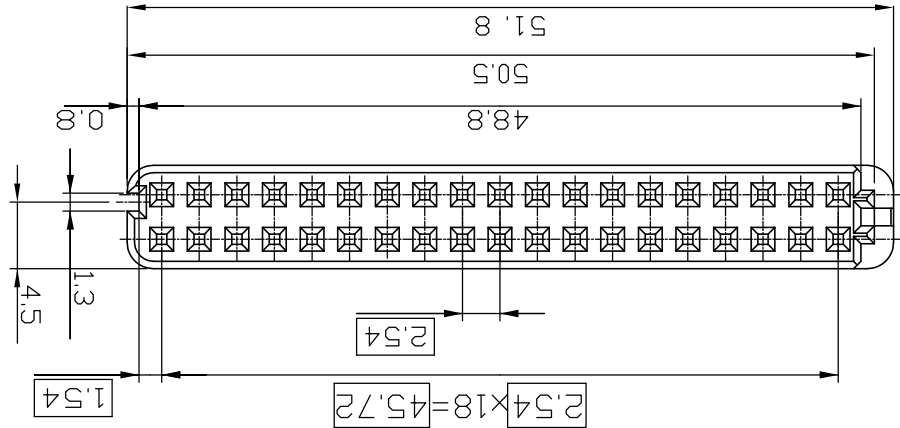
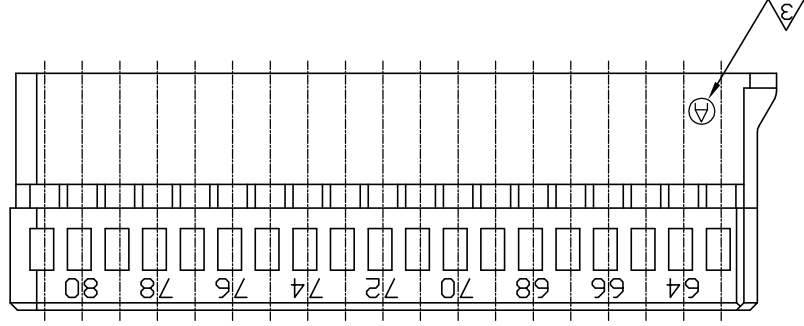
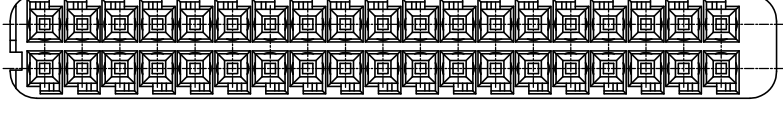
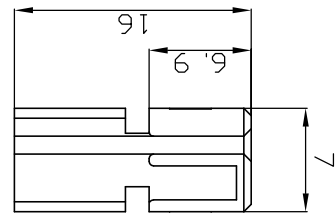


MATERIAL		FINISH		WEIGHT	
3-d ANGLE PROJECTION		TOLERANCES UNLESS OTHERWISE SPECIFIED:		APPLICATION SPEC	
DIMENSIONS: MM		0 <XXX<10 ± 0.2		PRODUCT SPEC	
		10<XX<30 ± 0.25		NAME	
		30<XX ± 0.3		MOS REC HOUSING "TYPE A"	
		ANGLES ± 3°		CAGE CODE 00779	
		THIS DRAWING IS CONTROLLED DOCUMENT FOR AMP INCORPORATED. IT IS SUBJECT TO CHANGE AND THE CONTROLLING ENGINEERING ORGANIZATION SHOULD BE CONTACTED FOR THE LATEST REVISION.		DRAWING NO 368293	
		DWN SJ CHDI JW JUNG APVD HG CHD		SCALE 2/1	
		CHK JW JUNG		SHEET 1 OF 1	
		TE Connectivity		REV C	

P/N	DESCRIPTION	MATERIAL	COLOR
9-368293-1	MOS REC HSG TYPE "A" (CHINA ONLY)	PBT+GF20%	BLACK
368293-1	MOS REC HSG TYPE "A"	PBT+GF20%	BLACK



NOTE:
 1. APPLICABLE ASS'Y CONNECTOR FOR JPT&MOS 81Pos.; P/N: 368290-1
 2. TRADE MARK.
 3. CAVITY MARK
 4. DATE CODE.
 5. RECYCLE MARKING.



REV	DATE	DESCRIPTION	LTR	P
A	30/APR/02	RELEASED ECN(FC00-0067-02)	JW	CS
B	12/DEC/07	REVISD (ECR-07-015887)	DR	JK
C	28/JUN/11	REVISD (ECR-11-013205)	SJ	HG

1	2	3	4
LDG	DIST	DS	

X-ON Electronics

Largest Supplier of Electrical and Electronic Components

Click to view similar products for [Automotive Connectors](#) category:

Click to view products by [TE Connectivity](#) manufacturer:

Other Similar products are found below :

[003-018-000](#) [600858](#) [60403001](#) [60993906-B](#) [60993913-B](#) [629515004020001](#) [M902-2131](#) [M902-2161](#) [M902-2344](#) [72.330.1035.1](#)
[73.353.4028.0](#) [F118010](#) [F119300-B](#) [F132210](#) [F132210-B](#) [F166900](#) [F180100](#) [F258300](#) [F258300-B](#) [F294300-B](#) [F339100](#) [F339700](#) [F358300-](#)
[B](#) [F374110](#) [F407400](#) [F412210](#) [F427600](#) [F444110](#) [F487000](#) [F495100-B](#) [F500900-B](#) [F509500B-B](#) [770444-1](#) [776880-1](#) [827153-1](#) [881735-1](#)
[8N1515-32-24P](#) [9-1326727-8](#) [9-1326729-8](#) [925467-1](#) [925474-1](#) [928905-1](#) [936398-2](#) [964562-1](#) [964562-4](#) [964731-2](#) [965051-1](#) [968782-1](#)
[GT17SA-8DS-HU](#) [GT17VS-10DP-5.2CF](#)