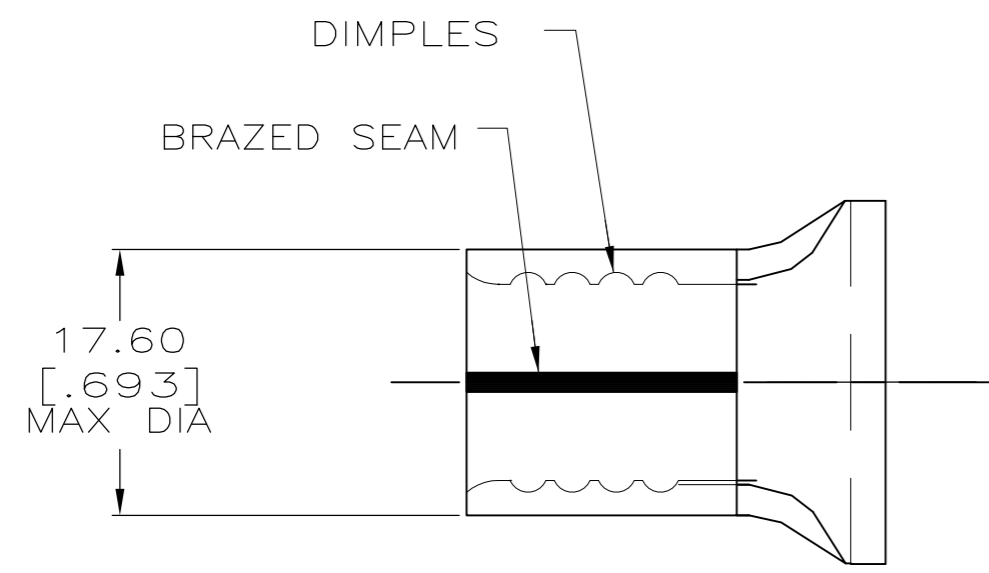


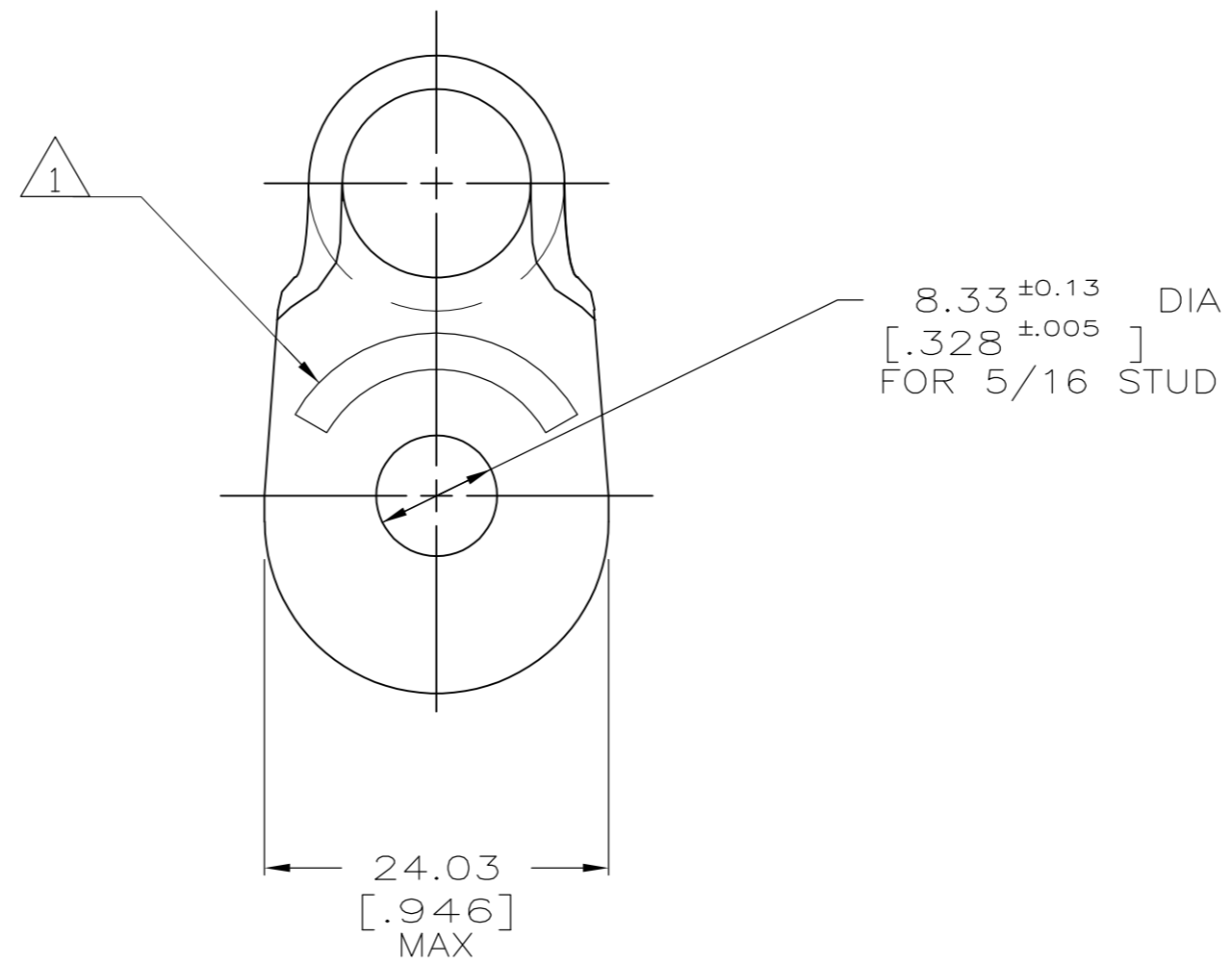
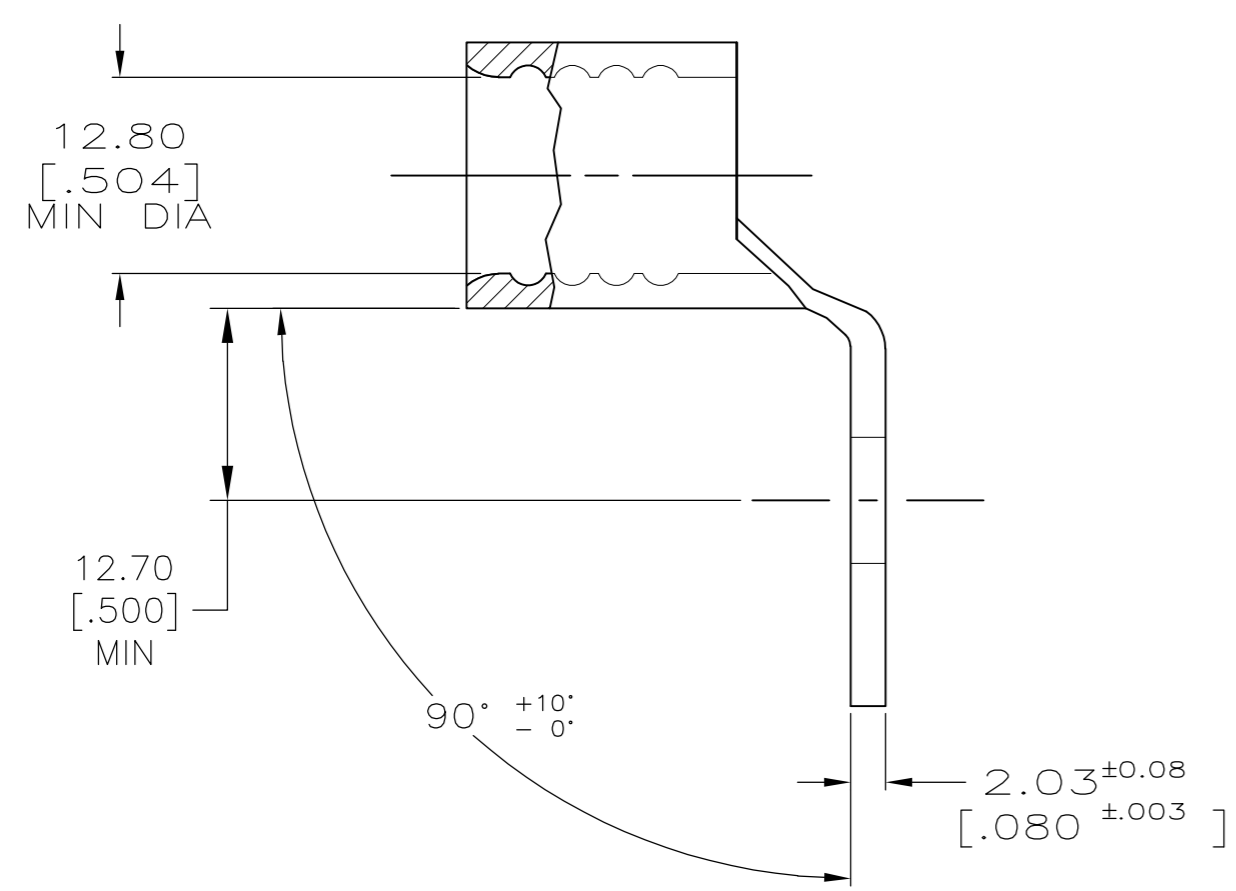
THIS DRAWING IS UNPUBLISHED. RELEASED FOR PUBLICATION
 © COPYRIGHT BY TYCO ELECTRONICS CORPORATION. ALL INTERNATIONAL RIGHTS RESERVED.

| LOC | DIST | REVISIONS | | | | | |
|-----|------|-----------|-----|---------------------------|---------|-----|------|
| | | P | LTR | DESCRIPTION | DATE | DWN | APVD |
| G | 14 | | C1 | REVISED PER ECR 09-015483 | 09JUL09 | JR | TM |



| | | |
|------------------------------|-----------------------|------------------------------|
| AMP WIRE RANGE | Listed FILE E13288 | LR7189 Certified |
| 2/0 AWG SOLID OR STRANDED | 2/0 AWG STRANDED | 2/0 AWG SOLID OR STRANDED |

- ① STAMP AMP 2/0W* APPROX AS SHOWN
- ② TIN PLATE 0.00254[.000100] MIN THK PER MIL-T-10727



| | | | |
|------------------|-----------|------------|---------------|
| ② | | 36922-1 | |
| FINISH | | PART NO. | |
| SIZE | CAGE CODE | DRAWING NO | RESTRICTED TO |
| A2 | 00779 | C=36922-1 | - |
| CUSTOMER DRAWING | | SCALE | SHEET |
| | | 2:1 | 1 of 1 |
| | | REV | C1 |

| AMP INCORPORATED CUSTOMER SERVICE SYSTEMS | | MAX RECOMMENDED OPERATING TEMPERATURE: 170° MAX |
|--|--|---|
| FOR ADDITIONAL PRODUCT INFORMATION OR COPIES OF DRAWINGS AND TECHNICAL DOCUMENTS | PRODUCT INFORMATION CENTER 1-800-522-6752 | VOLTAGE RATING: N/A |
| FOR APPLICATION TOOLING INFORMATION | TOOLING ASSISTANCE CENTER 1-800-722-1111 | CIRCULAR MIL AREA: 60.6-76.3mm ² [119,500-150,500] SOLID OR STRANDED |
| FOR ORDER ENTRY | 1-800-526-5142 | THIS DRAWING IS A CONTROLLED DOCUMENT FOR AMP INCORPORATED. IT IS SUBJECT TO CHANGE AND THE CONTROLLING ENGINEERING ORGANIZATION SHOULD BE CONTACTED FOR THE LATEST REVISION. |

| | | |
|---|--|-------------------------------|
| THIS DRAWING IS A CONTROLLED DOCUMENT. | | DWN DK SCHRUM 1/14/94 |
| DIMENSIONS: MM [INCHES] | | CHK AJ KAUFMAN 1/19/94 |
| TOLERANCES UNLESS OTHERWISE SPECIFIED: | | APVD JL MECKLEY 1/19/94 |
| 0 PLC ± - | | PRODUCT SPEC |
| 1 PLC ± - | | APPLICATION SPEC |
| 2 PLC ± 0.20[.008] | | WEIGHT |
| 3 PLC ± - | | - |
| 4 PLC ± - | | CUSTOMER DRAWING |
| ANGLES ± - | | SCALE |
| FINISH | | 2:1 |
| MATERIAL COPPER PER ASTM B-152 ANNEALED | | SEE TABLE |

X-ON Electronics

Largest Supplier of Electrical and Electronic Components

Click to view similar products for [Terminals](#) category:

Click to view products by [TE Connectivity](#) manufacturer:

Other Similar products are found below :

[00-054007-01074-6](#) [00-054007-70206-1](#) [00-054007-70210-8](#) [00-054007-70217-7](#) [00-054007-70226-9](#) [00-054007-70228-3](#) [00-054007-70248-1](#) [00-054007-70256-6](#) [00-054007-70301-3](#) [00-054007-70316-7](#) [0-0320562-0](#) [00-054007-49560-4](#) [00-054007-70209-2](#) [00-054007-70225-2](#) [00-054007-70227-6](#) [00-054007-70231-3](#) [00-054007-70241-2](#) [00-054007-70242-9](#) [00-054007-70244-3](#) [00-054007-70246-7](#) [00-054007-70263-4](#) [00-054007-70288-7](#) [00-054007-70290-0](#) [00-054007-70300-6](#) [00-054007-70304-4](#) [01-2065-1-0216](#) [01-2900-1-04412](#) [00581P0075](#) [600TS-10](#) [60205-1](#) [604200-1](#) [605601-1](#) [60598-1-CUT-TAPE](#) [61314-6-C](#) [61810-3](#) [61-S](#) [61-SN](#) [626-0194](#) [62-NBM-A](#) [62-SN](#) [62-SP](#) [63-S](#) [640179-1](#) [M55155/059I03](#) [M55155/079C01](#) [M55155/099H02](#) [M55155/109H01](#) [M55155/109H02](#) [M55155/12XH05](#) [M55155/16XH02](#)