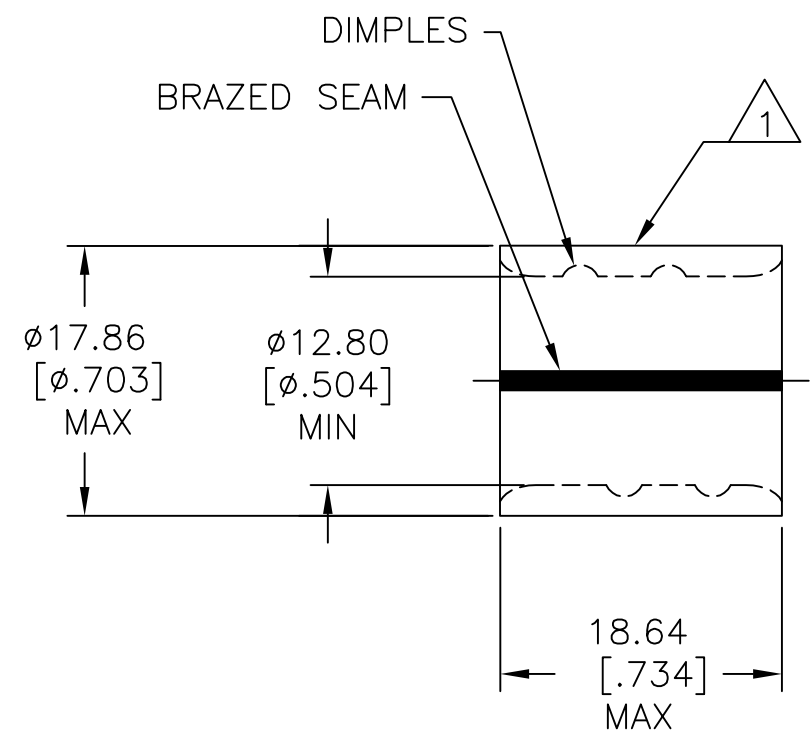


| REVISIONS | | | | | |
|-----------|-----|---------------------------|-----------|-----|------|
| P | LTR | DESCRIPTION | DATE | DWN | APVD |
| | H3 | REVISED PER ECO-15-018389 | 24DEC2015 | NK | DR |
| | H4 | REVISED PER ECO-17-004099 | 29AUG2017 | RS | DR |

| | | |
|------------------------------|------------------------------|------------------------------|
| AMP WIRE RANGE | Listed FILE E13288 | LR7189 Certified |
| 2/0 AWG SOLID OR STRANDED | 2/0 AWG SOLID OR STRANDED | 2/0 AWG SOLID OR STRANDED |



- 1 STAMP AMP 2/0W* 125
LOCATE APPROX AS SHOWN.
- 2 MATERIAL THK: 2.03±0.05[.080±.002]
- 3 TIN PL 0.00254 [.000100] MIN THK
PER ASTM B545.
- 4 NOTE DELETED.
- 5 NOTE DELETED.
- 6 STAMP FOR MANUFACTURING LOCATION OR
CODE PERMISSIBLE.
- 7 NOTE DELETED.
- 8 NOTE DELETED.
- 9 NOTE DELETED.
- 10 NOTE DELETED.

| | | | |
|--------|-----|----------------|----------|
| | 50 | LOOSE PIECE | 36948 |
| FINISH | QTY | PACKAGING TYPE | PART NO. |

| | | | | | | | | | | | | |
|---|--|--|--|--|----------------------------|-----------------|-----------|------------|---------------|---|-----------------|-----------|
| AMP INCORPORATED CUSTOMER SERVICE SYSTEMS | | MAX RECOMMENDED OPERATING TEMPERATURE: 170°C [338°F] | THIS DRAWING IS A CONTROLLED DOCUMENT. | | DWN DK SCHRUM 5/24/93 | TE Connectivity | | | | | | |
| FOR ADDITIONAL PRODUCT INFORMATION OR COPIES OF DRAWINGS AND TECHNICAL DOCUMENTS PRODUCT INFORMATION CENTER 1-800-522-6752 | | VOLTAGE RATING: N/A | DIMENSIONS: mm [INCHES] | TOLERANCES UNLESS OTHERWISE SPECIFIED: | CHK RD HEIM 1/27/94 | | | | | NAME SPLICE, PARALLEL, SOLISTRAND, 2/0 AWG | | |
| FOR APPLICATION TOOLING ASSISTANCE CENTER TOOLING INFORMATION 1-800-722-1111 | | CIRCULAR MIL AREA: 60.6-76.3mm²[119,500-150,500] SOLID OR STRANDED | | 0 PLC ± - 1 PLC ± - 2 PLC ± 0.20[.008] 3 PLC ± - 4 PLC ± - ANGLES ± - | APVD JL MECKLEY 1/27/94 | SIZE | CAGE CODE | DRAWING NO | RESTRICTED TO | | | |
| FOR ORDER ENTRY 1-800-526-5142 | | THIS DRAWING IS A CONTROLLED DOCUMENT FOR AMP INCORPORATED. IT IS SUBJECT TO CHANGE AND THE CONTROLLING ENGINEERING ORGANIZATION SHOULD BE CONTACTED FOR THE LATEST REVISION. | MATERIAL COPPER PER ASTM B-152 | FINISH SEE TABLE | PRODUCT SPEC - | WEIGHT - | A3 | 00779 | C-36948 | SCALE 2:1 | SHEET 1 OF 1 | REV H4 |

X-ON Electronics

Largest Supplier of Electrical and Electronic Components

Click to view similar products for [Terminals](#) category:

Click to view products by [TE Connectivity](#) manufacturer:

Other Similar products are found below :

[00-054007-01074-6](#) [00-054007-70206-1](#) [00-054007-70210-8](#) [00-054007-70217-7](#) [00-054007-70226-9](#) [00-054007-70228-3](#) [00-054007-70248-1](#) [00-054007-70256-6](#) [00-054007-70301-3](#) [00-054007-70316-7](#) [00-054007-49560-4](#) [00-054007-70209-2](#) [00-054007-70225-2](#) [00-054007-70227-6](#) [00-054007-70231-3](#) [00-054007-70241-2](#) [00-054007-70242-9](#) [00-054007-70244-3](#) [00-054007-70246-7](#) [00-054007-70263-4](#) [00-054007-70288-7](#) [00-054007-70290-0](#) [00-054007-70300-6](#) [00-054007-70304-4](#) [01-2065-1-0216](#) [01-2900-1-04412](#) [00581P0075](#) [600TS-10](#) [60205-1](#) [604200-1](#) [605601-1](#) [60598-1-CUT-TAPE](#) [61314-6-C](#) [61810-3](#) [61-S](#) [61-SN](#) [626-0194](#) [62-NBM-A](#) [62-SN](#) [62-SP](#) [63-S](#) [640179-1](#) [M55155/059I03](#) [M55155/079C01](#) [M55155/099H02](#) [M55155/109H01](#) [M55155/109H02](#) [M55155/12XH05](#) [M55155/16XH02](#) [M55155/29-5S](#)