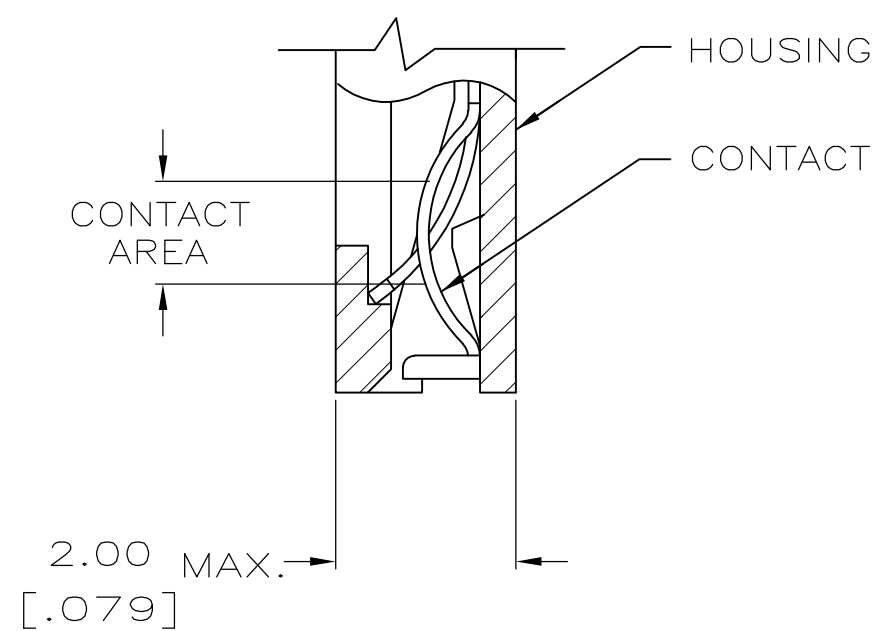


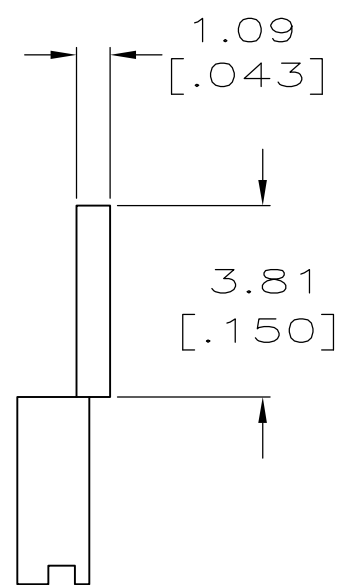
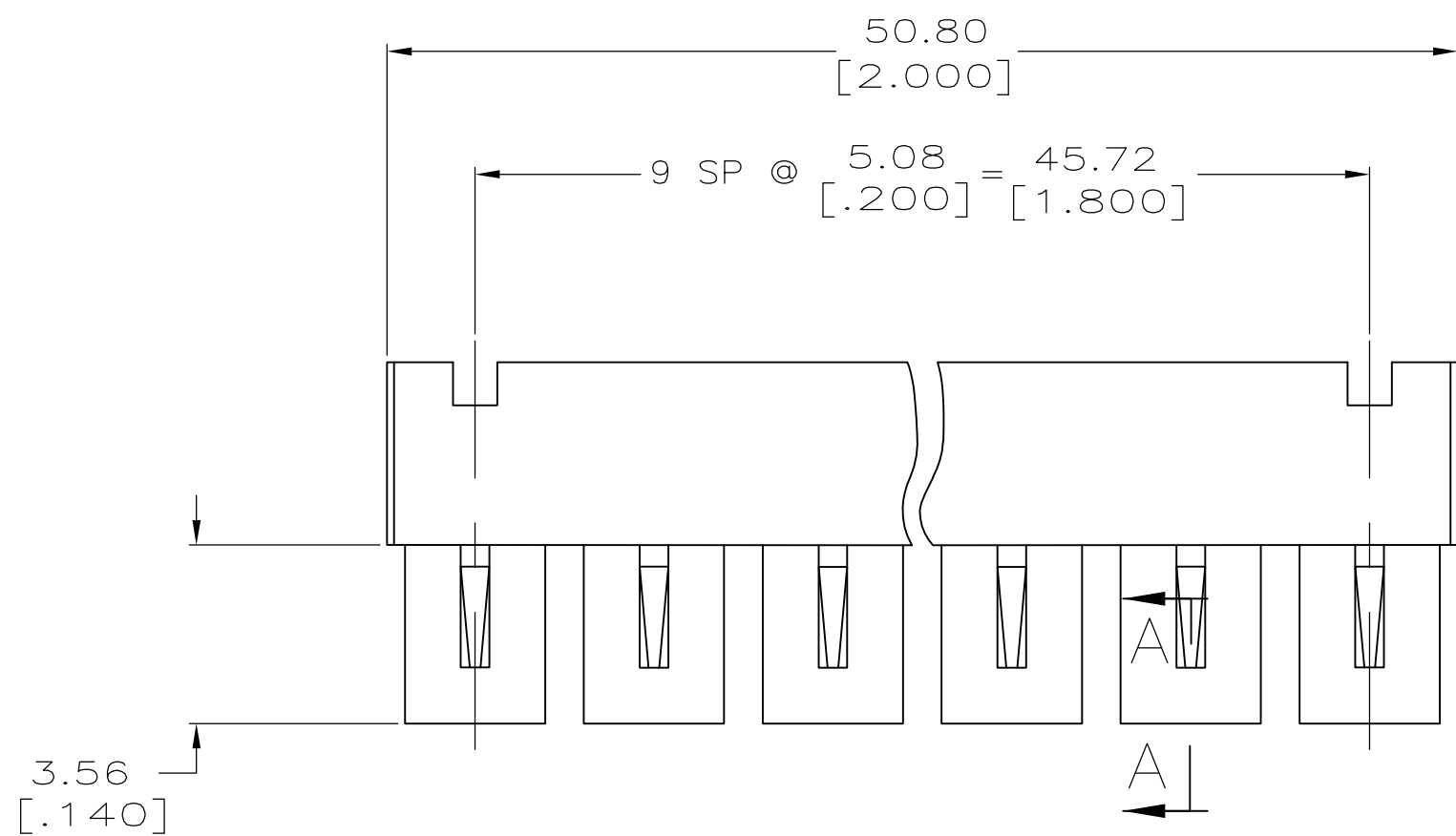
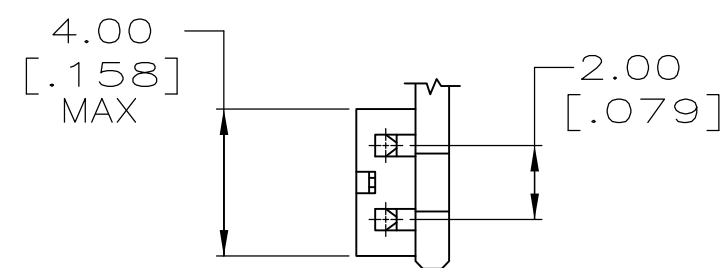
THIS DRAWING IS UNPUBLISHED. RELEASED FOR PUBLICATION
 © COPYRIGHT - By - ALL RIGHTS RESERVED.

LOC	DIST	REVISIONS			
P	LTR	DESCRIPTION	DATE	DWN	APVD
AG	53	F1	REVISED PER ECO-11-004835	11MAR11	RK HMR



SECTION A-A
 SCALE 10:1
 10 PLACES

- ① HOUSING MATERIAL: BLACK THERMOPLASTIC, 94V-O.
- ② CONTACT MATERIAL: BERYLLIUM COPPER.
- ③ CONTACT PLATED WITH 0.00038 [.000015] GOLD IN CONTACT AREA OVER 0.00127 [.000050] NICKEL OVERALL.
- 4 CONNECTOR MATES WITH 0.5mm [.020] SQUARE POSTS ON 2.0mm [.079] CENTERS, MINIMUM POST LENGTH 2.54 [.100].
- ⑤ PART NO. DENOTES INDIVIDUAL TWO POSITION SHUNT, WHICH IS PACKAGED ON BREAKAWAY COMBS OF TEN SHUNTS.
- ⑥ CONTACT PLATED WITH 0.00076 [.000030] GOLD IN CONTACT AREA OVER 0.00127 [.000050] NICKEL OVERALL.
- ⑦ CONTACT PLATED WITH 0.00381 [.000150] MIN. BRIGHT TIN-LEAD OVER 0.00127 [.000050] MIN. NICKEL OVERALL.



⑥	382575-3
③	382575-2
⑦	382575-1
FINISH	PART NO ⑤

THIS DRAWING IS A CONTROLLED DOCUMENT.		DWN	C.WHITT	1-8-93		TE Connectivity			
DIMENSIONS: MM [INCHES]		CHK	R.TALLEY	1-8-93		NAME			
TOLERANCES UNLESS OTHERWISE SPECIFIED:		APVD	D.HUFFMAN	1-8-93		MINI-SHUNT ASSY, 2mm			
0 PLC ± -		PRODUCT SPEC		SIZE		CAGE CODE	DRAWING NO	RESTRICTED TO	
1 PLC ± -		APPLICATION SPEC		A2		00779	C=382575	-	
2 PLC ± -		WEIGHT		SCALE		SHEET		REV	
3 PLC ± 0.26 [.010]		-		4:1		1 of 1		F1	
4 PLC ± -		CUSTOMER DRAWING		-		-		-	
ANGLES ± -		SEE TABLE		-		-		-	
FINISH		-		-		-		-	

X-ON Electronics

Largest Supplier of Electrical and Electronic Components

Click to view similar products for [Headers & Wire Housings](#) category:

Click to view products by [TE Connectivity](#) manufacturer:

Other Similar products are found below :

[892-18-020-10-001101](#) [58102-G61-06LF](#) [582553-1](#) [0009485154](#) [009176003701906](#) [0050291907](#) [LY20-4P-DT1-P1E-BR](#) [02.125.8002.8](#)
[609-3404](#) [61062-3](#) [61082-181009](#) [622-3653LF](#) [63453-116](#) [636-1030](#) [636-1427](#) [636-3427](#) [636-4007](#) [641938-9](#) [641991-4](#) [644827-2](#) [65817-010LF](#) [65817-015LF](#) [65863-015LF](#) [66207-023LF](#) [67095-007LF](#) [67601157](#) [68645-018](#) [68648-049](#) [70.362.1628.0](#) [70-4210](#) [70-4226B](#) [70-4853B](#) [707-5020](#) [707-5028](#) [71.350.2428.0](#) [71918-208LF](#) [71961-016LF](#) [733-134](#) [733-162](#) [754199-000](#) [760-3052](#) [787-8014-00](#) [79531-3000](#)
[FCN-360C032-B](#) [FCN-367T-T012/H](#) [FCN-723D010/2](#) [80.063.4001.1](#) [800-90-001-10-001000](#) [800-90-010-10-002000](#) [801-43-002-10-013000](#)