

SAFETY ORGANIZATION(S):

THIS FILTER HAS BEEN FORMALLY RECOGNIZED, CERTIFIED OR APPROVED BY THE LISTED AGENCY. THEREFORE, ALL TEST/REQUIREMENTS SPECIFIED IN THE LATEST REVISION OF THE FOLLOWING AGENCY STANDARDS HAVE BEEN MET:

- UL RECOGNIZED
- UL 1283
- CSA CERTIFIED
- CSA 22.2, NO. 0.0.4, 8
- VDE APPROVED
- VDE 565-3
- SEMKO APPROVED
- SEN 432901

OPERATING SPECIFICATIONS:

- LINE VOLTAGE/CURRENT:
- 3 AMP., 120/250 VAC
- 50-60Hz
- LINE FREQUENCY:
- MAX. LEAKAGE CURRENT, EACH LINE TO GROUND
- .20mA at 120V 60 Hz
- .33 mA at 250V 50 Hz
- OPERATING AMBIENT TEMP. RANGE:
- 10°C TO +40°C @ RATED CURRENT, I_r
- IN AN AMBIENT, T_a, HIGHER THAN 40°C, THE MAXIMUM OPERATING CURRENT, I_o, IS AS FOLLOWS:

$$I_o = I_r \sqrt{\frac{85 - T_a}{45}}$$

RELIABILITY SPECIFICATIONS:

- STORAGE TEMPERATURE:
- 40°C TO +85°C
- HUMIDITY:
- 21 DAYS @ 40°C 95% RH
- CURRENT OVERLOAD TEST:
- 6 TIMES RATED CURRENT FOR 8 SECONDS

TEST SPECIFICATIONS:

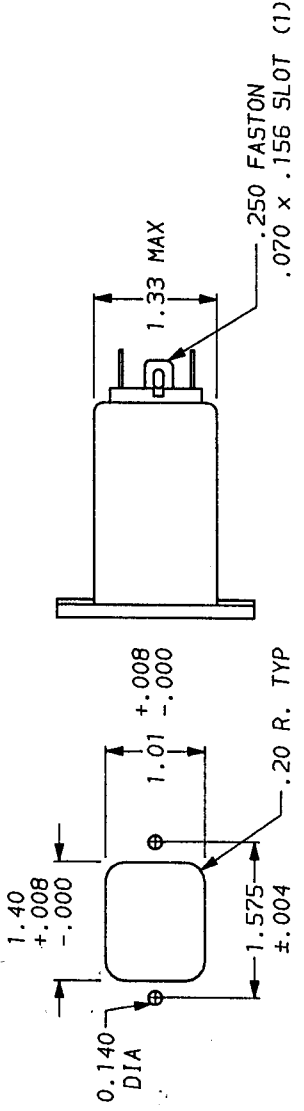
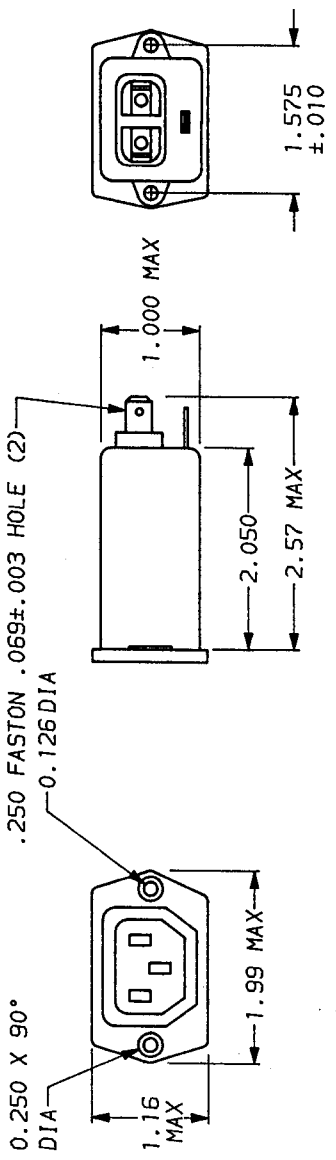
- INDUCTANCE:
- 1.45 mH NOMINAL
- CAPACITANCE, (MEASURED @ 1 KHz, 0.25 VAC MAX., 25°C ±1°C)
- LINE TO GROUND:
- .003µF ±20%
- LINE TO LINE:
- .047µF ±20%
- DISCHARGE RESISTOR:
- 1.5 MΩ
- LINE/GROUND AND LINE/LINE INSULATION RESISTANCE
- 6000 MΩ (MIN) AT 100 VDC
- (W/O DISCHARGE RESISTOR)
- 20°C AND 50% RH

RECOMMENDED RECEIVING INSPECTION HIPOTEL:

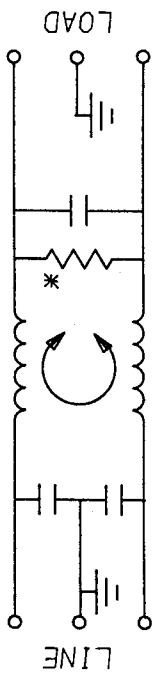
- LINES TO GROUND:
- 2250 VDC FOR 1 MINUTE
- LINE TO LINE:
- 1450 VDC FOR 1 MINUTE

FILTER APPROVAL:

THE BEST WAY TO SELECT AND QUALIFY A FILTER IS FOR YOUR ENGINEERING TO TEST THE UNIT IN YOUR EQUIPMENT.



THIS FILTER LINE AND LOAD ARE REVERSED; THE SOCKET IS LOAD.



FREQUENCY MHZ	50Ω - 50Ω (MINIMUM) INSERTION LOSS											
	.01	.05	.1	.15	.5	1	3	5	10	30		
COMMON	—	—	—	10	15	19	30	36	44	49	50	47
DIFF.	—	—	—	1	2	11	14	25	38	44	40	—

This document is proprietary to CORCOM INC. and is not to be reproduced nor used for manufacturing purposes except on CORCOM's order or prior written consent.

*RESISTOR ADDED TO PRODUCT BUILT AFTER 3-30-92 (9212)



LIBERTYVILLE, IL 60048

ACCESSORY OUTLET FILTER

SCALE	DATE	DRG. NO.	REV.
NTS	11-5-90		3EBF1.02
APP. BY	DESIGNATOR		
CFW	CFW		

X-ON Electronics

Largest Supplier of Electrical and Electronic Components

Click to view similar products for [AC Power Entry Modules](#) category:

Click to view products by [TE Connectivity](#) manufacturer:

Other Similar products are found below :

[0098.0050](#) [6167.0002](#) [6609100-2](#) [7-6609955-2](#) [FKI2-50-6/M5](#) [FN361-6-06](#) [FN389-4-22](#) [FN9226B-6-02](#) [FN9233S1-10-06](#) [FN9233S1-8-06](#)
[FN9233S1B-8-06](#) [FN9233S1R-1-06](#) [FN9233S1R-12-06](#) [FN9233SB-1-06](#) [FN9233SB-12-06](#) [FN9233SB-8-06](#) [FN9233SR-10-06](#) [FN9244B-15-06HI](#) [FN9244EB-3-06](#) [FN9244EB-8-06](#) [FN9244ER-15-06](#) [FN9244ER-8-06](#) [FN9244ES1-8-06](#) [FN9244ESB-8-06](#) [FN9244R-12-06](#)
[FN9244S1-12-06](#) [FN9244S1R-3-06](#) [FN9244SB-8-06](#) [FN9244SR-6-06](#) [FN9244U-3-06](#) [FN9244U-8-06](#) [8-6609940-2](#) [PE00SSSXB](#) [Fuse-H-EUR-1](#) [Fuse-H-USA-1](#) [PM00XD000](#) [A-0701-HT-H](#) [15EJMS8](#) [1-6609941-2](#) [200JM6-2](#) [CA121003-6](#) [SK-1015\(F1-5\)](#) [161-R3015-E](#) [1-6609153-2](#) [FN323-1-05](#) [FN9233B-8-06](#) [FN9233EB-1-06](#) [FN9233ES1R-10-06](#) [FN9233R-12-06](#) [FN9233S-10-06](#)