

SAFETY ORGANIZATION(S)

THIS FILTER HAS BEEN FORMALLY RECOGNIZED, CERTIFIED OR APPROVED BY THE LISTED AGENCY. THEREFORE, ALL TEST/REQUIREMENTS SPECIFIED IN THE LATEST REVISION OF THE FOLLOWING AGENCY STANDARDS HAVE BEEN MET.

UL RECOGNIZED  
UL 1283  
CSA CERTIFIED  
CSA 22.2, NO. 0, 0.4, 8  
VDE APPROVED  
VDE 565-3  
SEV APPROVED  
SEV 1055/TP1977/5.1.1

OPERATING SPECIFICATIONS

LINE VOLTAGE/CURRENT:  
3 AMP., 120/250 VAC  
3 AMP./40°C, 250 VAC  
50-60Hz  
40°C

LINE FREQUENCY

MAX. CASE RISE & RATED CURRENT:  
MAX. LEAKAGE CURRENT, EACH  
LINE TO GROUND  
OPERATING AMBIENT TEMP. RANGE:  
-10°C TO +40°C & RATED CURRENT, I<sub>r</sub>

IN AN AMBIENT, T<sub>a</sub>, HIGHER THAN 40°C, THE MAXIMUM OPERATING CURRENT, I<sub>o</sub>, IS AS FOLLOWS:

$$I_o = I_r \sqrt{\frac{85 - T_a}{45}}$$

RELIABILITY SPECIFICATIONS

STORAGE TEMPERATURE:  
-40°C TO +85°C  
HUMIDITY:  
21 DAYS @ 40°C 95% RH  
CURRENT OVERLOAD TEST:  
6 TIMES RATED CURRENT FOR 8 SECONDS

TEST SPECIFICATIONS

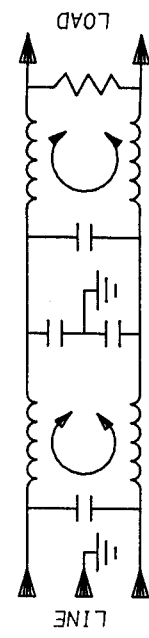
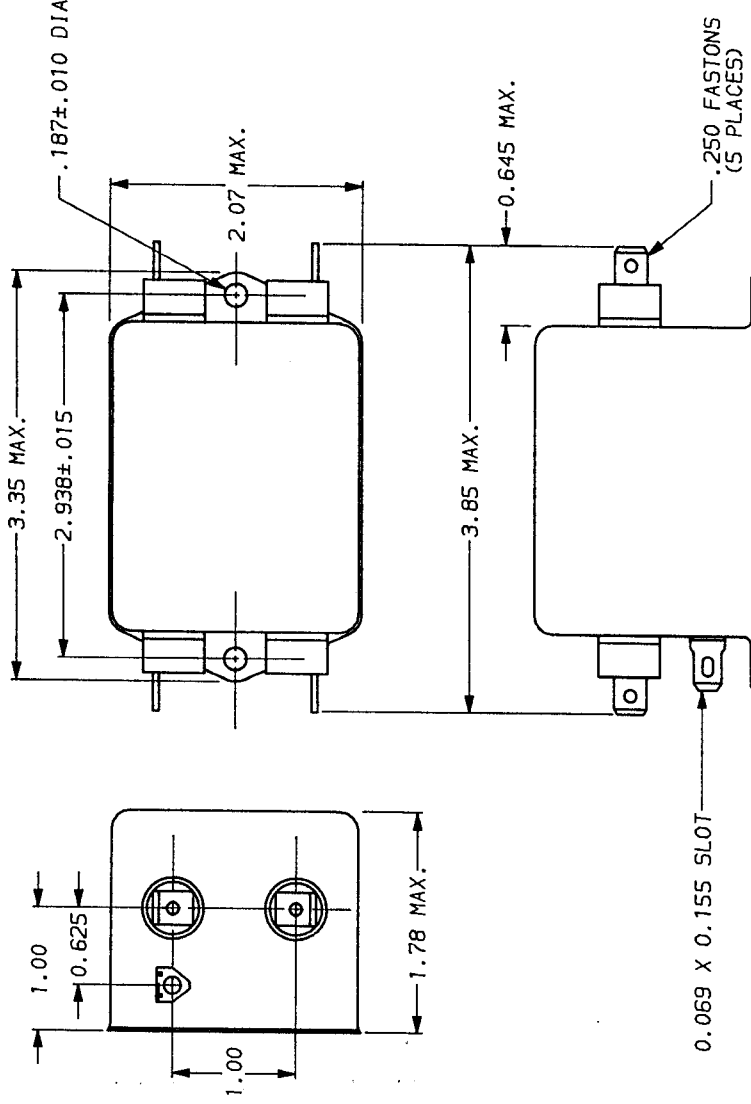
INDUCTANCE:  
14.12 mH NOMINAL  
CAPACITANCE, (MEASURED @ 1 KHz, 0.25 VAC MAX., 25°C ±1°C)  
LINE TO GROUND:  
.0056µF ±20%  
LINE TO LINE:  
.811µF ±20%  
DISCHARGE RESISTOR:  
330 KΩ  
LINE/GROUND AND LINE/LINE  
INSULATION RESISTANCE  
5000 MΩ (MIN) AT 100 VDC  
(W/O DISCHARGE RESISTOR)  
20°C AND 50% RH

RECOMMENDED RECEIVING INSPECTION HIPOUT.

LINES TO GROUND:  
2250 VDC FOR 1 MINUTE  
LINES TO LINE:  
1450 VDC FOR 1 MINUTE

FILTER APPROVAL:

THE BEST WAY TO SELECT AND QUALIFY A FILTER IS FOR YOUR ENGINEERING TO TEST THE UNIT IN YOUR EQUIPMENT.



50Ω - 50m (MINIMUM) INSERTION LOSS									
FREQUENCY MHz	.01	.04	.05	.06	.15	.5	10	20	30
COMMON	12	2	10	18	58	65	65	62	55
DIFF.	1	3	3	4	36	65	65	65	58

This document is proprietary to CORCOM, INC. and is not to be reproduced nor used for manufacturing purposes except on CORCOM's order or prior written consent.

TOLERANCE EXCEPT AS NOTED  
DECIMAL: .XXX .XX .X ANGLES  
ENGLISH: ±.025  
METRIC: ±

MATERIAL:  
AS SUPPLIED

FINISH:  
AS SUPPLIED

**28** **corcom**  
LIBERTYVILLE, IL 60048

**POWER LINE FILTER**

SCALE: DATE: 9-12-89  
REV: NTS  
DRAWN BY: TDL  
ORIGINATOR: CW  
DRG. NO.: 3EP1.08

## X-ON Electronics

Largest Supplier of Electrical and Electronic Components

*Click to view similar products for [Power Line Filters](#) category:*

*Click to view products by [TE Connectivity](#) manufacturer:*

Other Similar products are found below :

[6609019-3](#) [6609026-5](#) [6609030-6](#) [6609973-2](#) [D30A](#) [7-1609090-5](#) [F2810](#) [F4456A](#) [F7382Z](#) [F7863Z](#) [FAHAV3100ZC000](#) [806276](#) [FN2020B-1-06](#) [FN2080B-10-06](#) [FN2410H-32-33](#) [FN2410H-80-34](#) [FP144](#) [FS4153-20-06](#) [FS4353-500-99](#) [12-MMB-030-11-D](#) [DB4-393](#) [15811T200](#) [20B1](#) [LC630](#) [2B1](#) [1609080-2](#) [1609993-8](#) [1-6609070-1](#) [F1100AA02](#) [F1150CC10](#) [F1500CA10](#) [F1500CA15](#) [F4041Z](#) [F7585E](#) [1B1](#) [FN2070A-16-06](#) [FN2090A-20-06](#) [FN2090B-12-06](#) [FN2090Z-1-06](#) [FN2410H-25-33](#) [FN2410H-60-34](#) [FN2410H-8-44](#) [FN2412H-8-44](#) [FN323B-6-01](#) [FN3258H-130-35](#) [FN610R-3-06](#) [20EHQ7](#) [20EHZ7](#) [20K1](#) [30B6](#)