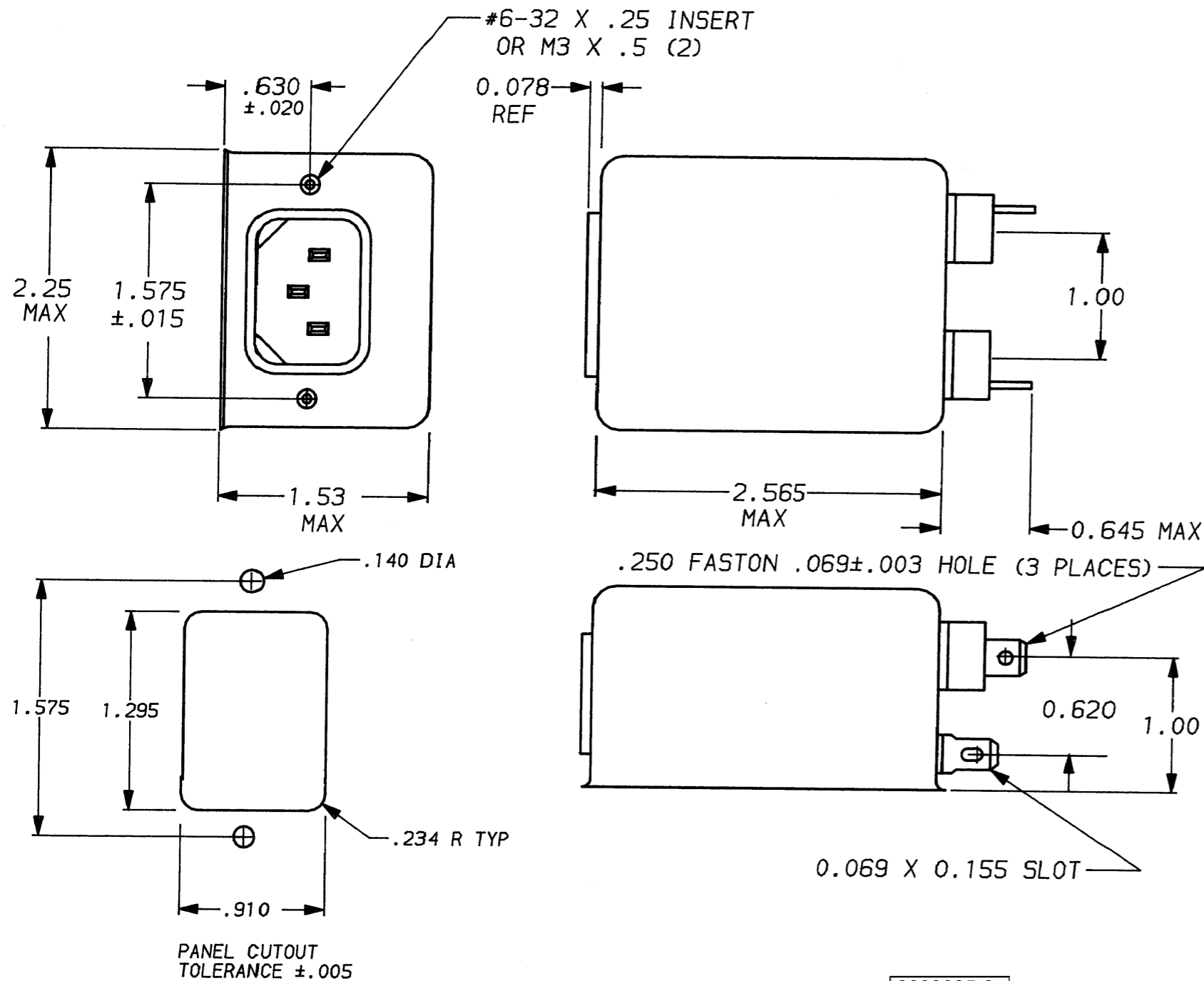


DESCRIPTION	APPROVED BY/DATE	REV
	C. Westby 5-21-92	6
ECO-09-026495	AEG / 07DEC09	7



**SAFETY ORGANIZATION(S):**

THIS FILTER HAS BEEN FORMALLY RECOGNIZED, CERTIFIED OR APPROVED BY THE LISTED AGENCY. THEREFORE, ALL TEST/REQUIREMENTS SPECIFIED IN THE LATEST REVISION OF THE FOLLOWING AGENCY STANDARDS HAVE BEEN MET:

UL RECOGNIZED UL 1283  
 CSA CERTIFIED CSA 22.2, NO.0,0.4,8  
 VDE APPROVED VDE 565-3  
 SEV APPROVED SEV 1055/TP1977/5.1.1

**OPERATING SPECIFICATIONS:**

LINE VOLTAGE/CURRENT: 3 AMP., 120/250 VAC  
 3 AMP./40°C, 250 VAC  
 50-60Hz

LINE FREQUENCY: 40°C

MAX. CASE RISE @ RATED CURRENT: .25mA at 120V 60 Hz  
 .48 mA at 250V 50 Hz

MAX. LEAKAGE CURRENT, EACH LINE TO GROUND

OPERATING AMBIENT TEMP. RANGE: -10°C TO +40°C @ RATED CURRENT, I<sub>r</sub>

IN AN AMBIENT, T<sub>a</sub>, HIGHER THAN 40°C, THE MAXIMUM OPERATING CURRENT, I<sub>o</sub>, IS AS FOLLOWS:

$$I_o = I_r \sqrt{\frac{85 - T_a}{45}}$$

**RELIABILITY SPECIFICATIONS:**

STORAGE TEMPERATURE: -40°C TO +85°C  
 HUMIDITY: 21 DAYS @ 40°C 95% RH  
 CURRENT OVERLOAD TEST: 6 TIMES RATED CURRENT FOR 8 SECONDS

**TEST SPECIFICATIONS:**

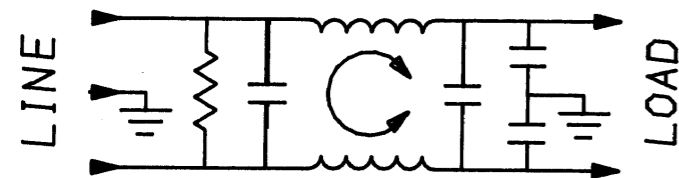
INDUCTANCE: 7.06 mH NOMINAL  
 CAPACITANCE: (MEASURED @ 1 KHz, 0.25 VAC MAX., 25°C ±1°C)  
 LINE TO GROUND: .006µF ±20%  
 LINE TO LINE: .54µF ±20%  
 DISCHARGE RESISTOR 330 KΩ  
 LINE/GROUND AND LINE/LINE 6000 MΩ (MIN) AT 100 VDC  
 INSULATION RESISTANCE 20°C AND 50% RH

**RECOMMENDED RECEIVING INSPECTION HIPOT:**

LINES TO GROUND: 2250 VDC FOR 1 MINUTE  
 LINE TO LINE: 1450 VDC FOR 1 MINUTE

**FILTER APPROVAL:**

THE BEST WAY TO SELECT AND QUALIFY A FILTER IS FOR YOUR ENGINEERING TO TEST THE UNIT IN YOUR EQUIPMENT.



⚠️ OBSOLETE PARTS: OBSOLETE CIS STREAMLINING PER D.RENAUD/D.SINISI

6609035-3  
 6609035-4  
 1609035-4 OBSOLETE ⚠️

50Ω - 50Ω (MINIMUM) INSERTION LOSS											
FREQUENCY MHz	.01	.02	.05	.08	.1	.15	.5	1	5	10	30
COMMON dB	5	10	19	25	27	30	48	40	36	36	36
DIFF. dB	1	1	2	3	10	25	59	65	62	40	40

TOLERANCE EXCEPT AS NOTED  
 DECIMAL: .XXX .XX .X ANGLES ± 1°  
 ENGLISH: ±.025  
 METRIC: ± —  
 MATERIAL: AS SUPPLIED



POWER LINE FILTER

This document is proprietary to CORCOM INC. and is not to be reproduced nor used for manufacturing purposes except on CORCOM's order or prior written consent.

FINISH: AS SUPPLIED

SCALE	DATE	DRG. NO.	REV.
NTS	9-12-89	3ESK7 & 3ESK7M	7
DRW. BY	ORIGINATOR		
TDL	CW		

## X-ON Electronics

Largest Supplier of Electrical and Electronic Components

*Click to view similar products for [Power Line Filters](#) category:*

*Click to view products by [TE Connectivity](#) manufacturer:*

Other Similar products are found below :

[6609019-3](#) [6609026-5](#) [6609030-6](#) [6609973-2](#) [D30A](#) [7-1609090-5](#) [F2810](#) [F4456A](#) [F7382Z](#) [F7863Z](#) [FAHAV3100ZC000](#) [806276](#) [FN2020B-1-06](#) [FN2080B-10-06](#) [FN2410H-32-33](#) [FP144](#) [FS4153-20-06](#) [FS4353-500-99](#) [12-MMB-030-11-D](#) [DB4-393](#) [15811T200](#) [20B1](#) [LC630](#) [2B1](#) [1609080-2](#) [1609993-8](#) [1-6609070-1](#) [F1100AA02](#) [F1150CC10](#) [F1500CA10](#) [F1500CA15](#) [F4041Z](#) [F7585E](#) [1B1](#) [FN2070A-16-06](#) [FN2090A-20-06](#) [FN2090B-12-06](#) [FN2090Z-1-06](#) [FN2410H-25-33](#) [FN2410H-60-34](#) [FN2410H-8-44](#) [FN2412H-8-44](#) [FN323B-6-01](#) [FN3258H-130-35](#) [FN610R-3-06](#) [20EHQ7](#) [20EHZ7](#) [20K1](#) [30B6](#) [3K1](#)