

THIS DRAWING IS UNPUBLISHED. RELEASED FOR PUBLICATION
 © COPYRIGHT - By - ALL RIGHTS RESERVED.

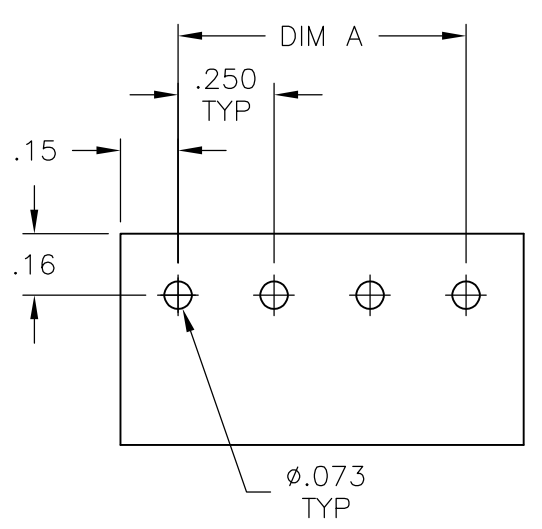
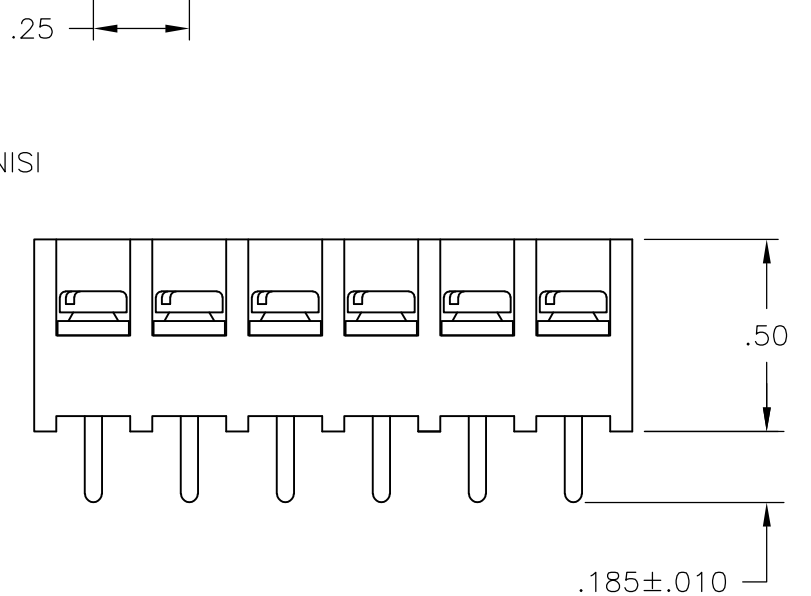
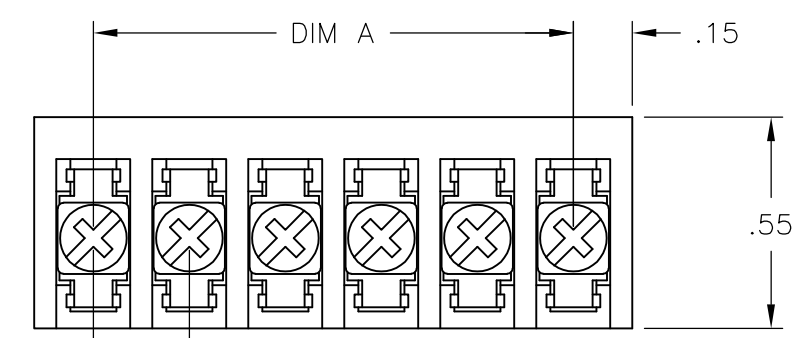
| | | | | | | | |
|-----|------|-----------|-----|----------------------|-----------|-----|------|
| LOC | DIST | REVISIONS | | | | | |
| FT | 0 | P | LTR | DESCRIPTION | DATE | DWN | APVD |
| | | | F1 | WIRE SIZE CORRECTION | 05MAR2015 | CR | PS |

MATERIAL:
 HOUSING: THERMOPLASTIC, UL94V-0, BLACK.
 TERMINAL: M3 THREAD, BRIGHT TIN PLATED, COPPER ALLOY.
 SCREWS: M3 THREAD ZINC PLATED STEEL, EXCEPT WHERE OTHERWISE NOTED.

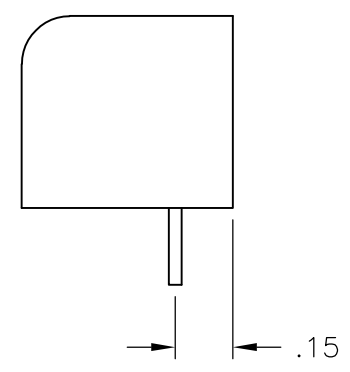
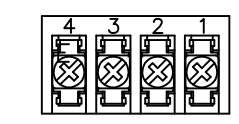
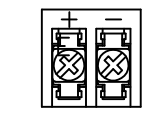
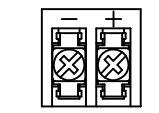
ELECTRICAL:
 RATED CURRENT: 10A.
 OPERATING VOLTAGE: 300V.
 WIRE RANGE: 18-22 AWG.

MECHANICAL:
 PITCH (TERMINAL SPACING): .250"
 OPERATING TEMP.: 120°C MAX.

- ① SEE FIGURE.
- ② M3 SCREWS, ZINC PLATED STEEL AND M3 THREADED TERMINAL.
- 3 RUNNING TORQUE: 4 IN-LB MAX.
- ④ OBSOLETE PARTS: OBSOLETE CIS STREAMLINING PER D.RENAUD/D.SINISI
- ⑤ PRELIMINARY PART NUMBER



RECOMMENDED PCB LAYOUT



| DIM. "A" | NO. OF POS. | CATALOG NUMBER | PART NO. |
|----------|-------------|-----------------|------------------------|
| ⑤ .25 | 2 | 3PCV-02-006-SPL | 796597-3 |
| 7.25 | 30 | 3PCV-30-006 | 4-1546119-3 |
| 7.00 | 29 | 3PCV-29-006 | 2-1546533-9 |
| 6.75 | 28 | 3PCV-28-006 | 2-1546533-8 |
| 6.50 | 27 | 3PCV-27-006 | 2-1546533-7 |
| 6.25 | 26 | 3PCV-26-006 | 4-1546119-2 |
| 6.00 | 25 | 3PCV-25-006 | 2-1546533-5 |
| 5.75 | 24 | 3PCV-24-006 | 4-1546119-1 |
| 5.50 | 23 | 3PCV-23-006 | 2-1546533-3 |
| 5.25 | 22 | 3PCV-22-006 | 3-1546119-9 |
| 5.00 | 21 | 3PCV-21-006 | 2-1546533-1 |
| ④ 4.75 | 20 | 3PCV-20-308 | 796597-2 |
| 4.75 | 20 | 3PCV-20-006 | 796597-1 |
| 4.50 | 19 | 3PCV-19-006 | 1-1546533-9 |
| 4.25 | 18 | 3PCV-18-006 | 3-1546119-7 |
| 4.00 | 17 | 3PCV-17-006 | 3-1546119-6 |
| 3.75 | 16 | 3PCV-16-006 | 7-1437646-8 |
| 3.50 | 15 | 3PCV-15-006 | 7-1437646-5 |
| 3.25 | 14 | 3PCV-14-006 | 7-1437646-3 |
| 3.00 | 13 | 3PCV-13-006 | 3-1546119-2 |
| 2.75 | 12 | 3PCV-12-006 | 6-1437646-7 |
| 2.50 | 11 | 3PCV-11-006 | 2-1546119-9 |
| 2.25 | 10 | 3PCV-10-006 | 6-1437646-2 |
| 2.00 | 9 | 3PCV-09-006 | 5-1437646-9 |
| 1.75 | 8 | 3PCV-08-006 | 5-1437646-7 |
| 1.50 | 7 | 3PCV-07-006 | 5-1437646-4 |
| 1.25 | 6 | 3PCV-06-006 | 5-1437646-0 |
| 1.00 | 5 | 3PCV-05-006 | 4-1437646-5 |
| ④ ① .75 | 4 | 3PCV-04-006-SPL | 2-796988-7 |
| .75 | 4 | 3PCV-04-006 | 4-1437646-2 |
| .50 | 3 | 3PCV-03-006 | 3-1437646-9 |
| ④ ① .25 | 2 | 3PCV-02-297 | 2-1546119-2 |
| ④ ① .25 | 2 | 3PCV-02-296 | 2-1546119-1 |
| .25 | 2 | 3PCV-02-006 | 3-1437646-3 |

- ④ ① OBSOLETE
- ④ ① OBSOLETE
- ④ ① OBSOLETE

| | | | | |
|--|--|------------------------|----------------------------|--------------|
| THIS DRAWING IS A CONTROLLED DOCUMENT. | | DWN S SCHLEGEL 24MAR03 | STE TE Connectivity | |
| DIMENSIONS: INCHES | | CHK S YODER 3/24/03 | | |
| TOLERANCES UNLESS OTHERWISE SPECIFIED: | | APVD S YODER 3/24/03 | NAME | |
| 0 PLC ± - | | PRODUCT SPEC | 3PCV-XX-006 ASSEMBLY | |
| 1 PLC ± - | | APPLICATION SPEC | SIZE | CAGE CODE |
| 2 PLC ± .02 | | WEIGHT | A3 | 00779 |
| 3 PLC ± .010 | | CUSTOMER DRAWING | DRAWING NO C-4-1437646-2 | |
| 4 PLC ± - | | SCALE | NTS | SHEET 1 OF 1 |
| ANGLES ± - | | REV | F1 | |
| FINISH | | | | |

X-ON Electronics

Largest Supplier of Electrical and Electronic Components

Click to view similar products for [Barrier Terminal Blocks](#) category:

Click to view products by [TE Connectivity](#) manufacturer:

Other Similar products are found below :

[CR151D20104](#) [670A-RZ-15-KT20](#) [6C1N03](#) [6PCR-02](#) [6PCR-02-008](#) [6PCR-05-008](#) [6PCR-08-008](#) [6PCR-09-008](#) [6PCR-13-006](#) [6PCR-15-006](#) [6PCR-21-006](#) [6PCV-06-008](#) [6PCV-06-716](#) [6PCV-09-001](#) [6PCV-10-009](#) [6PCV-15-008](#) [6PCV-17-1206](#) [6PCV-20-323](#) [6PCV-30-006](#) [6STR-06-006](#) [6STR-08-006](#) [6STR-12-008](#) [6STR-13-006](#) [6STR-14-008](#) [6STR-16-008](#) [6STR-17-008](#) [6STR-21-008](#) [6STR-25-008](#) [6STR-27-008](#) [6STV-03-006](#) [6STV-03-008](#) [6STV-04-006](#) [6STV-09-006](#) [6STV-10-006](#) [6WWR-03-693](#) [6WWV-12-008](#) [6WWV-16-008](#) [72212603](#) [72504-C-50](#) [72506-C](#) [72507-C-50](#) [73203](#) [75505-C](#) [75505-C-50](#) [75510-C](#) [77010-50](#) [7C1N08](#) [812-GP-3/4ST-09](#) [8-1437402-5](#) [8-1437402-7](#)