

THIS DRAWING IS UNPUBLISHED. RELEASED FOR PUBLICATION
 © COPYRIGHT - By - ALL RIGHTS RESERVED.

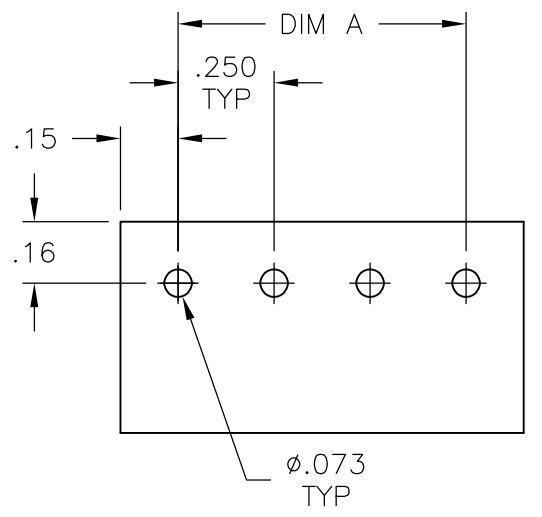
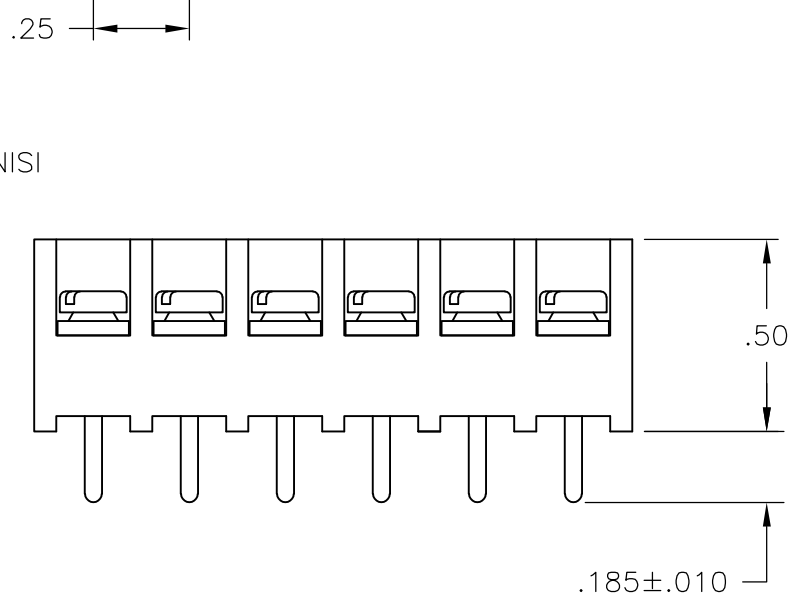
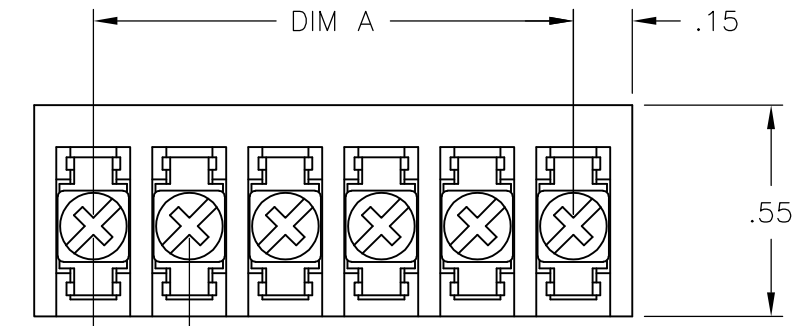
| | | | | | | | |
|-----|------|-----------|-----|----------------------|-----------|-----|------|
| LOC | DIST | REVISIONS | | | | | |
| FT | 0 | P | LTR | DESCRIPTION | DATE | DWN | APVD |
| | | | F1 | WIRE SIZE CORRECTION | 05MAR2015 | CR | PS |

MATERIAL:
 HOUSING: THERMOPLASTIC, UL94V-0, BLACK.
 TERMINAL: M3 THREAD, BRIGHT TIN PLATED, COPPER ALLOY.
 SCREWS: M3 THREAD ZINC PLATED STEEL, EXCEPT WHERE OTHERWISE NOTED.

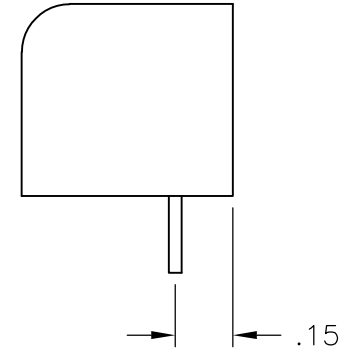
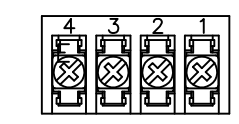
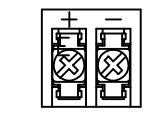
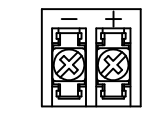
ELECTRICAL:
 RATED CURRENT: 10A.
 OPERATING VOLTAGE: 300V.
 WIRE RANGE: 18-22 AWG.

MECHANICAL:
 PITCH (TERMINAL SPACING): .250"
 OPERATING TEMP.: 120°C MAX.

- ① SEE FIGURE.
- ② M3 SCREWS, ZINC PLATED STEEL AND M3 THREADED TERMINAL.
- 3 RUNNING TORQUE: 4 IN-LB MAX.
- ④ OBSOLETE PARTS: OBSOLETE CIS STREAMLINING PER D.RENAUD/D.SINISI
- ⑤ PRELIMINARY PART NUMBER



RECOMMENDED PCB LAYOUT



| DIM. "A" | NO. OF POS. | CATALOG NUMBER | PART NO. |
|-----------|-------------|-----------------|------------------------|
| ⑤ .25 | 2 | 3PCV-02-006-SPL | 796597-3 |
| 7.25 | 30 | 3PCV-30-006 | 4-1546119-3 |
| 7.00 | 29 | 3PCV-29-006 | 2-1546533-9 |
| 6.75 | 28 | 3PCV-28-006 | 2-1546533-8 |
| 6.50 | 27 | 3PCV-27-006 | 2-1546533-7 |
| 6.25 | 26 | 3PCV-26-006 | 4-1546119-2 |
| 6.00 | 25 | 3PCV-25-006 | 2-1546533-5 |
| 5.75 | 24 | 3PCV-24-006 | 4-1546119-1 |
| 5.50 | 23 | 3PCV-23-006 | 2-1546533-3 |
| 5.25 | 22 | 3PCV-22-006 | 3-1546119-9 |
| 5.00 | 21 | 3PCV-21-006 | 2-1546533-1 |
| ④ 4.75 | 20 | 3PCV-20-308 | 796597-2 |
| 4.75 | 20 | 3PCV-20-006 | 796597-1 |
| 4.50 | 19 | 3PCV-19-006 | 1-1546533-9 |
| 4.25 | 18 | 3PCV-18-006 | 3-1546119-7 |
| 4.00 | 17 | 3PCV-17-006 | 3-1546119-6 |
| 3.75 | 16 | 3PCV-16-006 | 7-1437646-8 |
| 3.50 | 15 | 3PCV-15-006 | 7-1437646-5 |
| 3.25 | 14 | 3PCV-14-006 | 7-1437646-3 |
| 3.00 | 13 | 3PCV-13-006 | 3-1546119-2 |
| 2.75 | 12 | 3PCV-12-006 | 6-1437646-7 |
| 2.50 | 11 | 3PCV-11-006 | 2-1546119-9 |
| 2.25 | 10 | 3PCV-10-006 | 6-1437646-2 |
| 2.00 | 9 | 3PCV-09-006 | 5-1437646-9 |
| 1.75 | 8 | 3PCV-08-006 | 5-1437646-7 |
| 1.50 | 7 | 3PCV-07-006 | 5-1437646-4 |
| 1.25 | 6 | 3PCV-06-006 | 5-1437646-0 |
| 1.00 | 5 | 3PCV-05-006 | 4-1437646-5 |
| ④ ④ ① .75 | 4 | 3PCV-04-006-SPL | 2-796988-7 |
| .75 | 4 | 3PCV-04-006 | 4-1437646-2 |
| .50 | 3 | 3PCV-03-006 | 3-1437646-9 |
| ④ ④ ① .25 | 2 | 3PCV-02-297 | 2-1546119-2 |
| ④ ④ ① .25 | 2 | 3PCV-02-296 | 2-1546119-1 |
| .25 | 2 | 3PCV-02-006 | 3-1437646-3 |

| | | | | | | | |
|--|--------|------------------|------------|----------------------|----------------------------|---------------|---------------|
| THIS DRAWING IS A CONTROLLED DOCUMENT. | | DWN | S SCHLEGEL | 24MAR03 | STE TE Connectivity | | |
| DIMENSIONS: INCHES | | CHK | S YODER | 3/24/03 | | | |
| TOLERANCES UNLESS OTHERWISE SPECIFIED: | | APVD | S YODER | 3/24/03 | NAME | | |
| 0 PLC | ± - | PRODUCT SPEC | | 3PCV-XX-006 ASSEMBLY | | | |
| 1 PLC | ± - | APPLICATION SPEC | | SIZE | CAGE CODE | DRAWING NO | RESTRICTED TO |
| 2 PLC | ± .02 | MATERIAL | | A3 | 00779 | C-4-1437646-2 | - |
| 3 PLC | ± .010 | FINISH | | CUSTOMER DRAWING | | | |
| 4 PLC | ± - | MATERIAL | | SCALE | NTS | SHEET | 1 OF 1 |
| ANGLES | ± - | MATERIAL | | REV F1 | | | |

X-ON Electronics

Largest Supplier of Electrical and Electronic Components

Click to view similar products for te connectivity manufacturer:

Other Similar products are found below :

[570416-000](#) [CLTEQ-M81CE-SSRELAY-4-20V](#) [D38999/24FJ4AN](#) [358838-000](#) [4-1195131-0](#) [650069-000](#) [SMD100-2](#) [CB-1022B-78](#)
[RM707012](#) [RP410012](#) [MMS42](#) [1-640426-8](#) [2EDL4CM](#) [DTS20W19-11PD-3028-LC](#) [RM202615](#) [NC6-P104-06](#) [TXR64AB90-3616AI](#)
[MSPS103B](#) [DTS26F21-41AE](#) [DTS26F21-41PE-LC](#) [DTS26F21-11SE-3028-LC](#) [1932144-1](#) [293545-4](#) [LVR125S](#) [MS27466T25F4PB](#) [CKB-](#)
[38-78010](#) [1206SFF150F/63-2](#) [5-2027513-8](#) [D38999/20JB35HA](#) [D38999/24WJ20PA](#) [1754138-1](#) [TE1500A2R2J](#) [DTS24F25-29PC-3028-LC](#)
[164-8033-08](#) [D38999/24WG11HA](#) [D38999/24WG11HN](#) [MS27467T21F11H](#) [DJT16E21-11HA](#) [1206SFH150F/24-2](#) [1-532955-3](#) [DTS24F19-](#)
[11SC-3028-LC](#) [DTS24F21-41HN-LC](#) [DTS24F21-41AN](#) [DTS24F21-41PN-LC](#) [DBAS 70-7-0 SN 090-1A SCC](#) [MS27467T21F35J](#)
[MS27467T21F11J](#) [MS27467T21F16H-LC](#) [MS27467T21F35H](#) [MS27467T21F41H-LC](#)