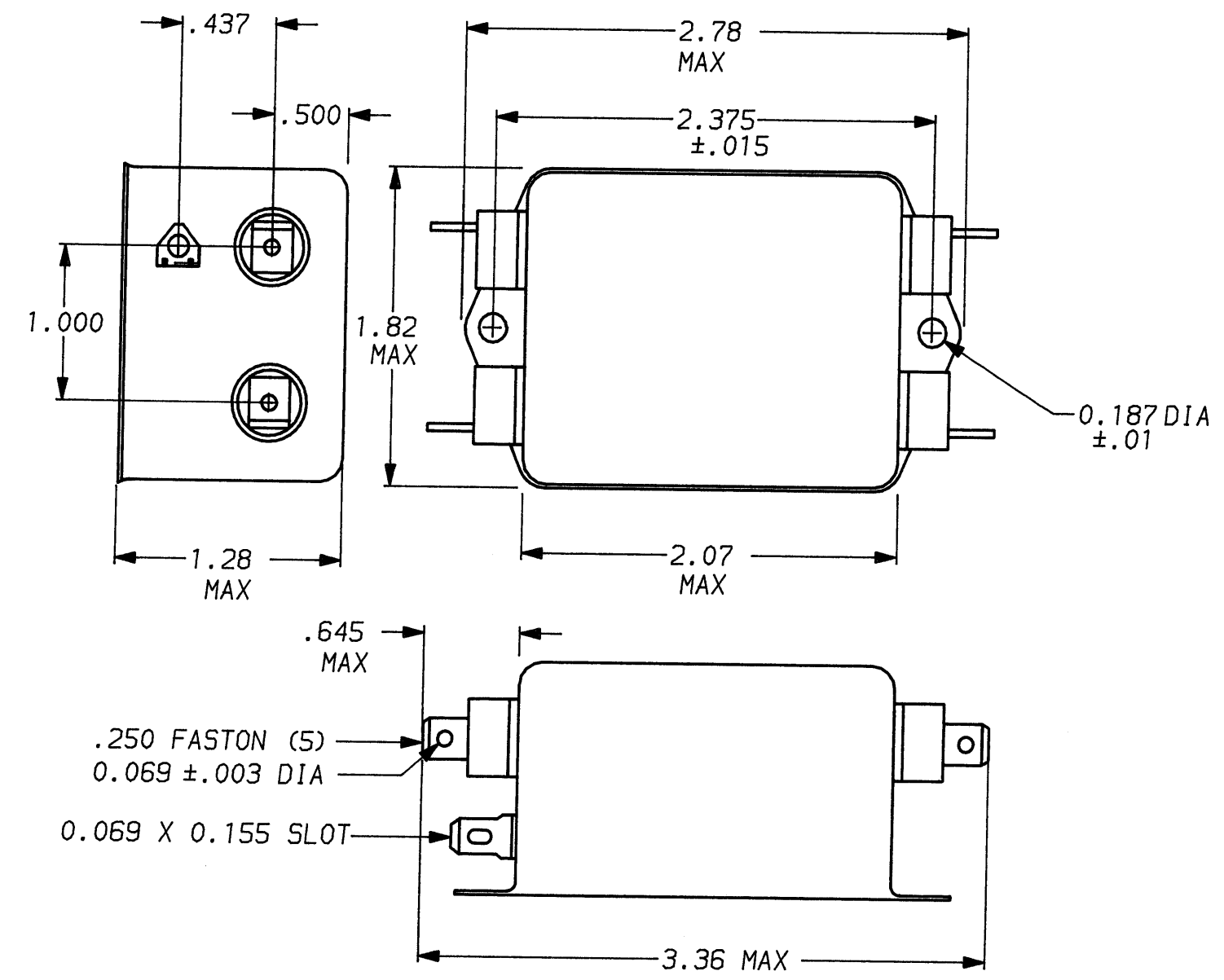


DESCRIPTION	APPROVED BY	DATE	REV
	C. Westby	5-21-92	7
ECO-09-026495	AEG	10DEC09	8



SAFETY ORGANIZATION(S):
 THIS FILTER HAS BEEN FORMALLY RECOGNIZED, CERTIFIED OR APPROVED BY THE LISTED AGENCY. THEREFORE, ALL TEST/REQUIREMENTS SPECIFIED IN THE LATEST REVISION OF THE FOLLOWING AGENCY STANDARDS HAVE BEEN MET:

UL RECOGNIZED
 CSA CERTIFIED
 VDE APPROVED

OPERATING SPECIFICATIONS:
LINE VOLTAGE/CURRENT:
 3.0 AMP., 120/250 VAC
 2.5 AMP./40°C, 250 VAC

LINE FREQUENCY:
 50-60Hz

MAX. CASE RISE @ RATED CURRENT:
 40°C

MAX. LEAKAGE CURRENT, EACH LINE TO GROUND:
 0.5mA at 120V 60 Hz
 1.0 mA at 250V 50 Hz

OPERATING AMBIENT TEMP. RANGE:
 -10°C TO +40°C @ RATED CURRENT, I_r

IN AN AMBIENT, T_a , HIGHER THAN 40°C, THE MAXIMUM OPERATING CURRENT, I_o , IS AS FOLLOWS:

UL 1283
 CSA 22.2, NO.0,0.4,8
 VDE 565-3

$$I_o = I_r \sqrt{\frac{85-T_a}{45}}$$

RELIABILITY SPECIFICATIONS:
STORAGE TEMPERATURE:
 -40°C TO +85°C
HUMIDITY:
 21 DAYS @ 40°C 95% RH
CURRENT OVERLOAD TEST:
 6 TIMES RATED CURRENT FOR 8 SECONDS

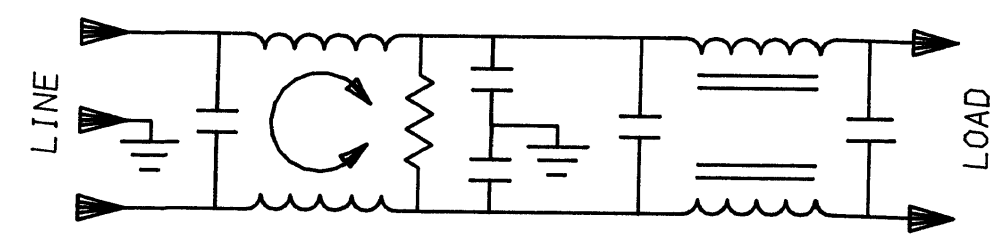
TEST SPECIFICATIONS:
INDUCTANCE:
 1.03 mH NOMINAL
CAPACITANCE: (MEASURED @ 1 KHz, 0.25 VAC MAX., 25°C ±1°C)
 LINE TO GROUND: .011µF ±20%
 LINE TO LINE: .813µF ±20%
DISCHARGE RESISTOR:
 330 K Ω
LINE/GROUND AND LINE/LINE INSULATION RESISTANCE (W/O DISCHARGE RESISTOR)
 6000 M Ω (MIN) AT 100 VDC
 20°C AND 50% RH

RECOMMENDED RECEIVING INSPECTION HIPOT:
 LINES TO GROUND: 2250 VDC FOR 1 MINUTE
 LINE TO LINE: 1450 VDC FOR 1 MINUTE

FILTER APPROVAL:
 THE BEST WAY TO SELECT AND QUALIFY A FILTER IS FOR YOUR ENGINEERING TO TEST THE UNIT IN YOUR EQUIPMENT.

1 OBSOLETE PARTS: OBSOLETE CIS STREAMLINING PER D.RENAUD/D.SINISI

1609043-1 OBSOLETE 1
6609043-1



50 Ω - 50 Ω (MINIMUM) INSERTION LOSS										
FREQUENCY MHz	.15	.3	.5	1	2	5	10	20	30	
COMMON dB	15	22	27	38	48	60	65	65	65	
DIFF. dB	25	42	65	65	63	60	52	50	50	

This document is proprietary to CORCOM INC. and is not to be reproduced nor used for manufacturing purposes except on CORCOM's order or prior written consent.

TOLERANCE EXCEPT AS NOTED
 DECIMAL: .XXX .XX .X ANGLES ± 1°
 ENGLISH: ±.025
 METRIC: ± —

MATERIAL: AS SUPPLIED

FINISH: AS SUPPLIED



POWER LINE FILTER			
SCALE NTS	DATE 9-12-89	DRG. NO.	REV.
DRW. BY TDL	ORIGINATOR CW	3VV1	8

X-ON Electronics

Largest Supplier of Electrical and Electronic Components

Click to view similar products for [Power Line Filters](#) category:

Click to view products by [TE Connectivity](#) manufacturer:

Other Similar products are found below :

[6609019-3](#) [6609026-5](#) [6609030-6](#) [6609973-2](#) [D30A](#) [7-1609090-5](#) [F2810](#) [F4456A](#) [F7382Z](#) [F7863Z](#) [FAHAV3100ZC000](#) [806276](#) [FN2020B-1-06](#) [FN2080B-10-06](#) [FN2410H-32-33](#) [FP144](#) [FS4153-20-06](#) [FS4353-500-99](#) [12-MMB-030-11-D](#) [DB4-393](#) [15811T200](#) [20B1](#) [LC630](#) [2B1](#) [1609080-2](#) [1609993-8](#) [1-6609070-1](#) [F1100AA02](#) [F1150CC10](#) [F1500CA10](#) [F1500CA15](#) [F4041Z](#) [F7585E](#) [1B1](#) [FN2070A-16-06](#) [FN2090A-20-06](#) [FN2090B-12-06](#) [FN2090Z-1-06](#) [FN2410H-25-33](#) [FN2410H-60-34](#) [FN2410H-8-44](#) [FN2412H-8-44](#) [FN323B-6-01](#) [FN3258H-130-35](#) [FN610R-3-06](#) [20EHQ7](#) [20EHZ7](#) [20K1](#) [30B6](#) [3K1](#)