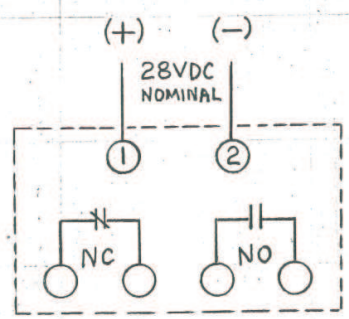
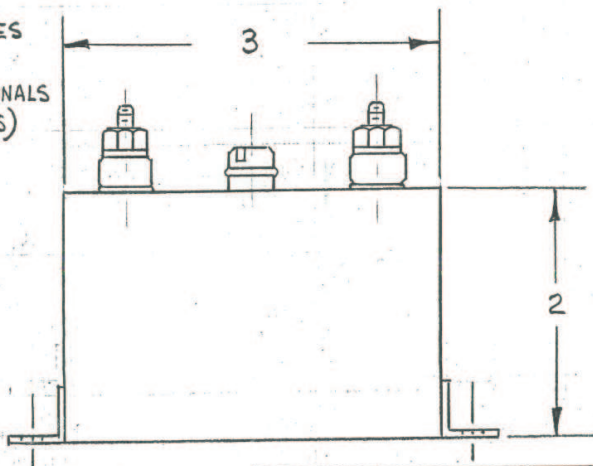


CONNECTION DIAGRAM



1/16" DIA.
4 MTG. HOLES

6-32 TERMINALS
(6 PLACES)



| REVISIONS | | | | |
|-----------|-----|-------------------------|---------|----------|
| ZONE | LTR | DESCRIPTION | DATE | APPROVED |
| | A | RELEASED FOR PRODUCTION | 7/11/00 | trism |

SPECIFICATIONS

INPUT VOLTAGE : 28VDC NOMINAL
 DROP-OUT VOLTAGE : 16-29VDC, SCREWDRIVER ADJUST.
 CONTACT RATING : 2AMP, RESISTIVE AT 28VDC
 IN ACCORDANCE WITH MIL-R-5757.
 CONTACT FORM : ONE SET N.O., ONE SET N.C.
 SHOCK : IN ACCORDANCE WITH MIL-5-901
 OPERATION : THE N.C. CONTACTS OPEN, AND THE N.O.
 CONTACTS CLOSE AT NOMINAL VOLTAGE,
 AND DROP-OUT BELOW THE SET POINT.
 CONSTRUCTION : SOLID STATE SENSOR WITH RELAY
 OUTPUT ENCLOSED IN A SEALED STEEL
 CAN.

NOTES: 1. REMOVE SCREW FOR ACCESS TO
 UNDervOLTAGE TRIP ADJUSTMENT.
 2. CLOCKWISE ROTATION OF THE
 ADJUSTMENT POTENTIOMETER WILL
 RAISE THE TRIP POINT.

CD CUSTOMER DRAWING
 SD- 410DC-SX Rev. A
 TE# 1618083-5 Rev. E

| QTY REQD | SYM | DESCRIPTION | CODE IDENT NO. | PART NO. | SPEC | MATERIAL OR NOTE | ITEM NO. |
|------------------|-----|--|----------------|--|------|------------------|----------|
| LIST OF MATERIAL | | | | | | | |
| | | UNLESS OTHERWISE SPECIFIED DIMENSIONS ARE IN INCHES TOLERANCES ON FRACTIONS DECIMALS ANGLES ± 1/32 ± .010 ± 1/2° | | WILMAR WE ELECTRONICS, INC. 2430 AMSLER ST. TORRANCE, CALIFORNIA 90505 | | | |
| | | CONTRACT NO. | | DRAWN E.R.H 12-17-73 CHECKED <i>3 Ch.</i> 12/17/73 DESIGN APPROVAL PROJECT APPROVAL DESIGN ACTIVITY APPROVAL APPROVAL | | | |
| | | MATERIAL: | | TITLE UNDervOLTAGE RELAY MODEL 410DC-SX SIZE B CODE IDENT NO. 25248 DWG NO. 21-232 SCALE 1:1 WEIGHT SHEET | | | |
| NEXT ASSY | | USED ON | | | | | |
| APPLICATION | | | | | | | |

X-ON Electronics

Largest Supplier of Electrical and Electronic Components

Click to view similar products for [Industrial Relays](#) category:

Click to view products by [TE Connectivity](#) manufacturer:

Other Similar products are found below :

[6-1617801-8](#) [6-1618107-9](#) [7-1618273-3](#) [EV250-4A-02](#) [EV250-6A-01](#) [FCA-125-CX8](#) [FCA-325-159](#) [FCA-410-138](#) [GCA63A220VAC60HZ](#)
[GCA63A600VAC60HZ](#) [1-1672275-3](#) [1-1833005-4](#) [H-16/S1](#) [H-8C](#) [ACC530U20](#) [RF303ZM4-12](#) [DH18DA](#) [RM699BV-3011-85-1005](#) [AR4-](#)
[15F13-C01](#) [AR7-41F11](#) [AVR907](#) [15732A200](#) [B329](#) [B490A](#) [1618279-1](#) [BHR124Y](#) [N417](#) [2071229-4](#) [P30C42A12D1-120](#) [2-1618375-1](#) [2-](#)
[1618396-6](#) [2-1618398-1](#) [JMAPD-5XL](#) [JMGACD-5M](#) [JMGSCD-5L](#) [K8DSPH1200480VAC](#) [KA-3C-12A](#) [2307497](#) [RT334012WG](#) [SAH159](#)
[301-17SX](#) [SL6H3-26.5VDC](#) [1618105-2](#) [1618112-6](#) [1618113-5](#) [1618276-6](#) [A837D](#) [A862B1](#) [ACC530U10](#) [ACC730-8025B](#)