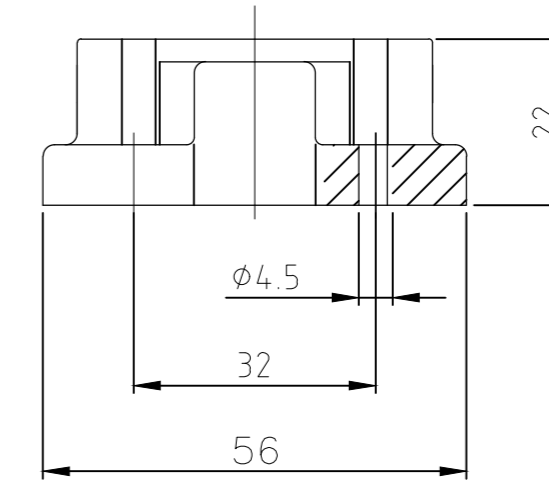
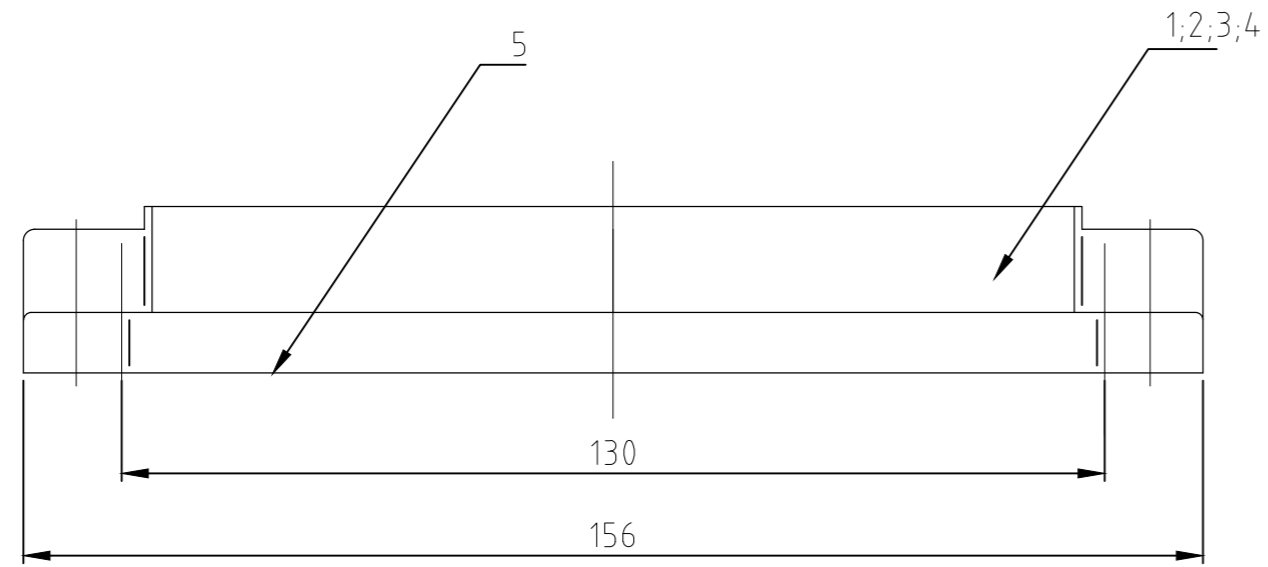
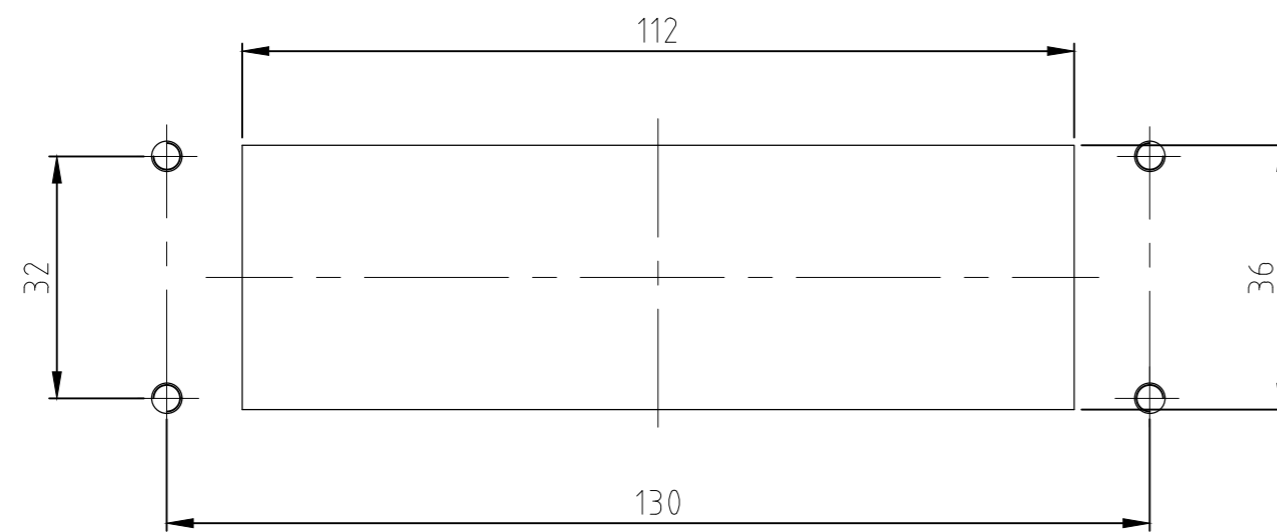


THIS DRAWING IS UNPUBLISHED. RELEASED FOR PUBLICATION
 © COPYRIGHT - TE Connectivity ALL RIGHTS RESERVED.

REVISIONS					
P	LTR	DESCRIPTION	DATE	DWN	APVD
	A6	REVISED PER ECR-17-014011	24JAN2018	NG	MKO



Panel Cut Out



- Notes:
- ① Material: Housing: aluminium diecasting alloy
Seals: Neoprene conductive
 - ② Surface: Varnisch- grey
yellow chromium plated +
Varnisch black
 - ③ Varnisch on the inside not necessarily

- Bemerkungen:
- ① Material: Gehäuse: Alu-Druckguß-Legierung
Dichtungen: Neoprene leitfähig
 - ② Oberfläche: Lackierung - grau
gelb chromatiert +
Lackierung schwarz
 - ③ Lackierung im Gehäuseinnere ist nicht notwendig

QTY	DESCRIPTION / BENENNUNG	MATERIAL	SURFACE/OBERFLÄCHE	COLOR/FARBE	ITEM NO.	REMARKS / BEMERKUNGEN
1	O-Ring Bg8	Neoprene	-	black/schwarz	5	Conductive
1	Bulkhead housing EMV-K Bg8	Aluminium/Alu	yellow chromated	black/schwarz	4	
1	Bulkhead housing EMV Bg8	Aluminium/Alu	-	grey/grau	3	
1	Bulkhead housing EMV Bg8	Aluminium/Alu	-	unvarnished	2	
1	Bulkhead housing EMV Bg8	Aluminium/Alu	-	white aluminum	1	

EMV.24/64-AG	EMV-K.24/64-AG	EMV.24/64-AG	EMV.24/64-AG	EMV.24/64-AG	EMV.24/64-AG	EMV.24/64-AG
OBSOLETE						OBSOLETE

THIS DRAWING IS A CONTROLLED DOCUMENT.		DWN	01.08.2000	 TE Connectivity Surface mounted housing bottom entry EMV Anbaugehäuse EMV.24/64-AG			
DIMENSIONS: mm		CHK	01.08.2000				
TOLERANCES UNLESS OTHERWISE SPECIFIED:		APVD	-				
0 PLC ± - 1 PLC ± - 2 PLC ± - 3 PLC ± - 4 PLC ± - ANGLES ± -		PRODUCT SPEC	-				
MATERIAL		APPLICATION SPEC	-	SIZE	CAGE CODE	DRAWING NO	RESTRICTED TO
FINISH		WEIGHT	-	A2	00779	C=1102760	-
ORDERING TEXT/BESTELLTEXT		CUSTOMER DRAWING		SCALE	1:1	SHEET	1 of 1
				REV	A6		

X-ON Electronics

Largest Supplier of Electrical and Electronic Components

Click to view similar products for [Heavy Duty Power Connectors](#) category:

Click to view products by [TE Connectivity](#) manufacturer:

Other Similar products are found below :

[1424439](#) [1424438](#) [09330062652](#) [605601-1](#) [6340G1](#) [6341G1](#) [6360G1](#) [6373G1](#) [6374g2](#) [6396G1](#) [647757-1](#) [6643411-1](#) [6646058-2](#) [6646137-1](#)
[6646138-1](#) [6646348-1](#) [6646479-1](#) [6646608-1](#) [6646786-1](#) [6646940-1](#) [6651525-1](#) [6651529-1](#) [6651778-1](#) [6651788-1](#) [696465-1](#) [696475-1](#)
[73000005059](#) [73000005349](#) [73000005642](#) [73080965046](#) [765-15-0080A](#) [765-16-0080B](#) [789.700-44](#) [789.700-54](#) [80-1010](#) [80-9](#) [827381-1](#)
[829992-1](#) [902-77-02113](#) [PL00U-301-10D10](#) [PM103MOOLOO](#) [PM212MOOLOO](#) [PM309FOOLOO](#) [PM324FOOLCH](#) [PMHPAF11S03](#)
[PMHPAF14S01](#) [PMHPAM14P05](#) [PMHPAS06](#) [PMHPBF14S01](#) [PP45PC12S](#)