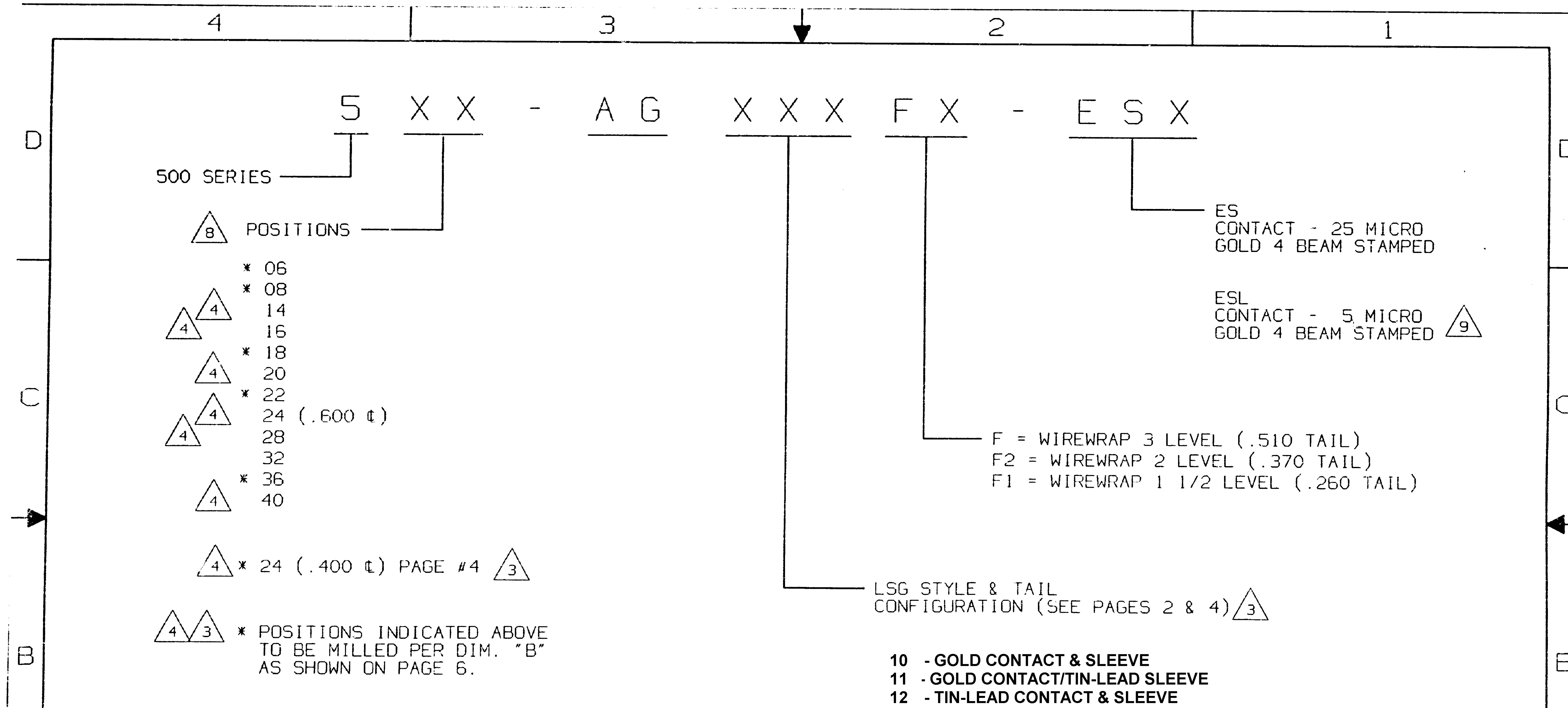


MARKED UP
 PRINT
 K. WRIGHT
 5/8/03



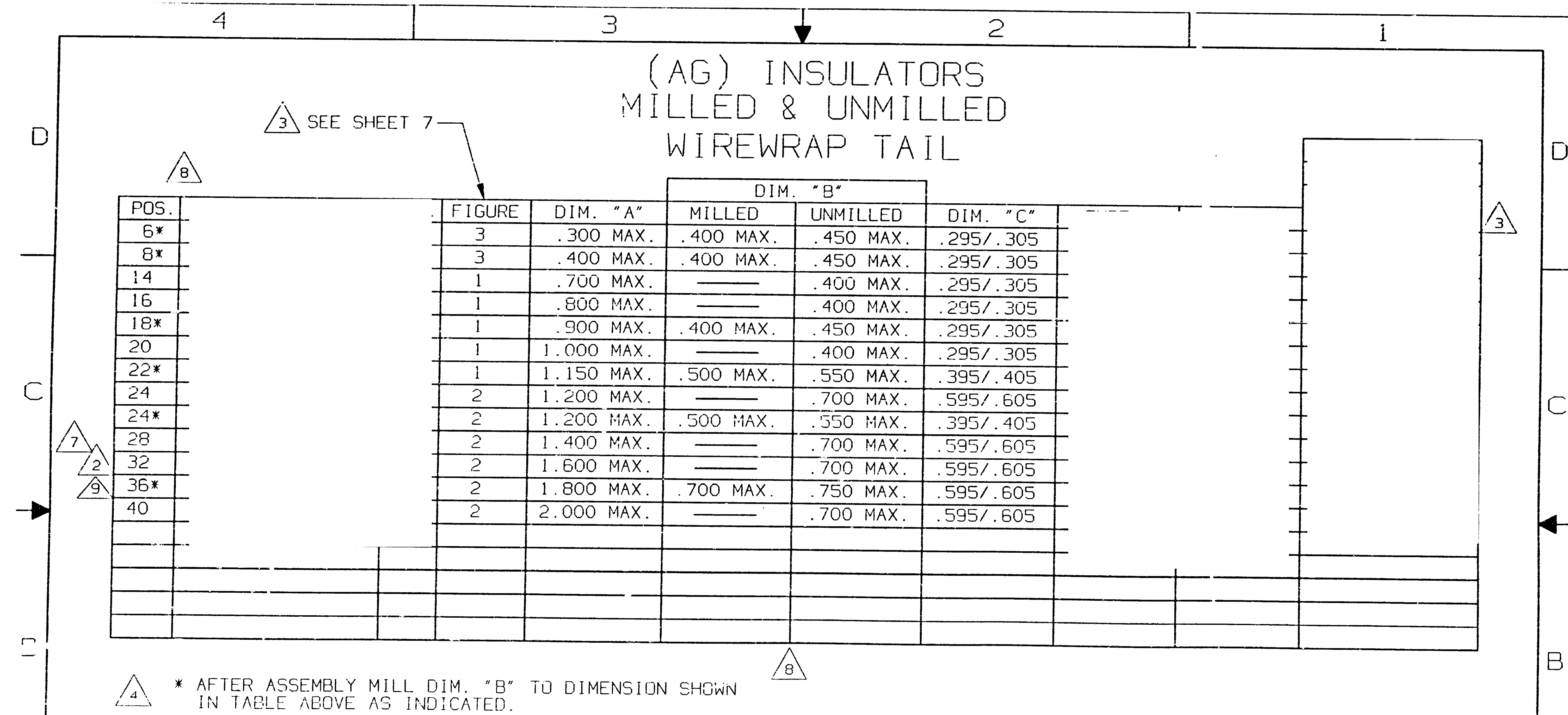
THIS IS A C.A.D. GENERATED DRAWING.
 DO NOT MAKE MANUAL REVISIONS TO MASTER.

REV	REVISIONS
1	REVISED & REDRAWN CO#C296-37 9-8-10-87 PP'D: AJC 8-27-87
2	REVISED CO#C471-87 3-11-13-87 PP'D: AJC 11-23-87
3	REVISED CO#73-90 5-2-22-90 PP'D: RES 2-25-90
4	REVISED CO#217-90 9-9-13-91 PP'D: ojc 4-2-90
5	REVISED CO#778-91 9-13-91 PP'D: RES 9-17-91
6	REVISED CO#1420-92 1-12-28-92 PP'D: CP
7	REVISED & REDRAWN CO#256-94 KIRCORIAN 9-5-95 PP'D: D.O. 9-25-95
8	REVISED CO# 744-95 S. 10-20-95 PP'D: DO'NEILL 10/24/95
9	REVISED CO# 398-96 D. 7-16-96 PP'D: O'Neill 7/16/96

UNLESS OTHERWISE SPECIFIED DIMENSIONS ARE IN INCHES DO NOT SCALE PRINT			ORIGINAL DATE OF DRAWING: 8-10-87
FILE NAME: 500AGFS	DIRECTORY: PNCODEAS	PROJECT:	DRANN: D.SANTOS
AUGAT CONFIDENTIAL			DATE: 8-10-87
This document contains information which is the exclusive property of Augat Inc. Distribution, reproduction or use by others is not permitted without the expressed written			CHECKED: REV. 6
			DATE: 12-23-92
			APPROVED: A.CORRIDORI
DATE: 8-27-87			
CODE IDENT. NO. 91506	DWG. SIZE B		

AUGAT INC.		452 JOHN DIETSCH BLVD. ATTLEBORG FALLS, MASS. 02763	
TITLE: ASSEMBLY SOCKET (.260, .370, .510 WW TAIL)			
DWG. NO. 500-AGXXXXFX-ES, ESL	REV. 9	PRODUCT CODE: 156	

MARKED UP
 PRINT
 K. WRIGHT
 5/8/03



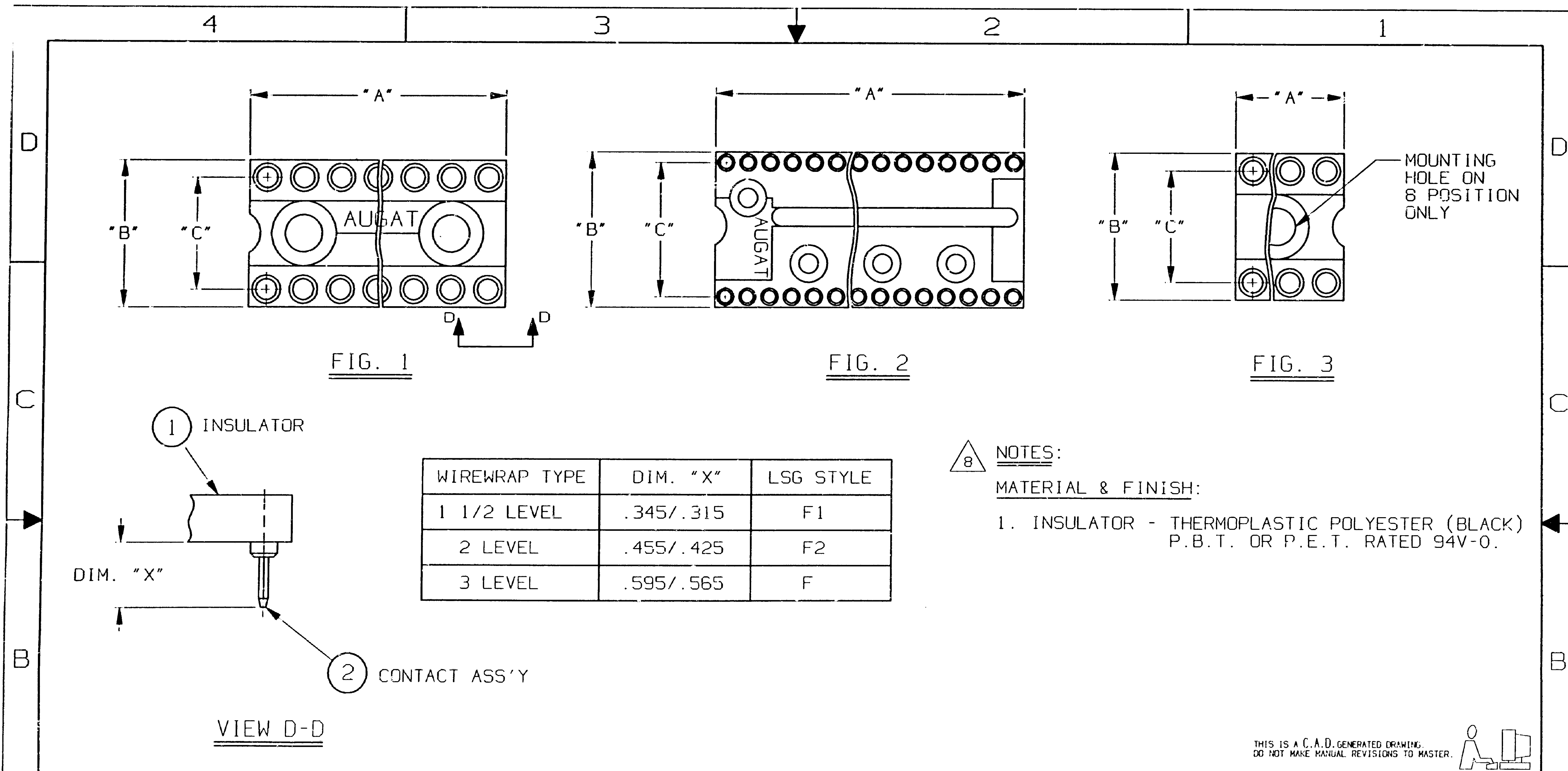
THIS IS A C.A.D. GENERATED DRAWING.
 DO NOT MAKE MANUAL REVISIONS TO MASTER.

REV	SEE SHEET 1
REVISIONS	

UNLESS OTHERWISE SPECIFIED DIMENSIONS ARE IN INCHES DO NOT SCALE PRINT			ORIGINAL DATE: OF DRAWING:	8-10-87
FILE NAME: 500AGF56	DIRECTORY: PNC00EAS	PROJECT:	DRAWN: D.SANTOS	DATE: 8-10-87
AUGAT CONFIDENTIAL			CHECKED: REV. 6 RAY-D	DATE: 12-29-92
This document contains information which is the exclusive property of Augat Inc. Distribution, reproduction or use by others is not permitted without the expressed written consent of Augat Inc.			APPROVED: A.CORRIDOR	DATE: 8-27-87
			CODE IDENT. NO. 91506	DWG. SIZE B

AUGAT INC.		452 JOHN DIETSCH BLVD. ATTLEBORO FALLS, MASS. 02763	
TITLE: ASSEMBLY SOCKET (.260, .370, .510 WW TAIL)			
DWG. NO.	500-AGXXXFX-ES, ESL	REV.	9
PRODUCT CODE: 156			

MARKED UP
 PRINT
 K. WRIGHT
 5/8/03



WIREWRAP TYPE	DIM. "X"	LSG STYLE
1 1/2 LEVEL	.345/.315	F1
2 LEVEL	.455/.425	F2
3 LEVEL	.595/.565	F

- NOTES:
- MATERIAL & FINISH:
1. INSULATOR - THERMOPLASTIC POLYESTER (BLACK) P.B.T. OR P.E.T. RATED 94V-0.

THIS IS A C.A.D. GENERATED DRAWING. DO NOT MAKE MANUAL REVISIONS TO MASTER.

A	REV	
	REVISIONS	SEE SHEET 1

UNLESS OTHERWISE SPECIFIED DIMENSIONS ARE IN INCHES TO NEAREST SCALE PRINT			ORIGINAL DATE OF DRAWING: 8-10-87		AUGAT INC. 452 JOHN DIETSCH BLVD. ATTLEBORO FALLS, MASS. 02763
FILE NAME: 500AGFS7	DIRECTORY: PNCODEAS	PROJECT:	DRAWN: D. SANTOS	DATE: 8-10-87	
AUGAT CONFIDENTIAL			CHECKED: REV. 6 RAY-D	DATE: 12-28-92	TITLE: ASSEMBLY SOCKET (.250, .370, .510 WW TAIL)
This document contains information which is the exclusive property of Augat Inc. Distribution, reproduction or use by others is not permitted without the expressed written consent of Augat Inc.			APPROVED: A. CORRADORI	DATE: 8-27-87	DWG. NO. 500-AGXXXX-ES, E3L
			CODE IDENT. NO. 91506	DWG. SIZE B	REV.
NEXT ASSY:			PRODUCT CODE: 156		SCALE: NONE

X-ON Electronics

Largest Supplier of Electrical and Electronic Components

Click to view similar products for [IC & Component Sockets](#) category:

Click to view products by [TE Connectivity](#) manufacturer:

Other Similar products are found below :

[0066-3-17-15-30-14-02-0](#) [670](#) [672](#) [673](#) [694-13-640-00-672-000](#) [712-93-120-41-001000](#) [714-93-104-31-018000](#) [8059-4G1-LF](#) [807-22-001-10-001101](#) [807-22-001-10-006101](#) [807-22-001-30-011101](#) [807-22-001-30-012101](#) [807-22-001-30-013101](#) [807-22-001-30-014101](#) [8-1437531-4](#) [8150-6P10](#) [833-93-034-10-001000](#) [851-41-006-10-001000](#) [851-43-008-20-001000](#) [851-43-014-20-001000](#) [851-93-006-20-001000](#) [851-93-010-20-001000](#) [853-43-020-10-001000](#) [86.010.0053.0](#) [116-43-308-41-007000](#) [PX-68LCC](#) [121-13-318-41-001000](#) [121-13-320-41-001000](#) [121-13-308-41-001000](#) [123-43-314-41-801000](#) [123-43-420-41-001000](#) [122-13-316-41-001000](#) [123-13-624-41-001000](#) [123-43-306-41-001000](#) [12-3513-11](#) [123-91-320-41-001000](#) [126-43-310-41-002000](#) [AKSUN 37V-T](#) [1437503-9](#) [1437504-1](#) [146-44-308-41-013000](#) [146-43-308-41-012000](#) [160-10-308-00-001000](#) [160-40-320-00-001000](#) [214-99-306-01-670800](#) [232-1270-02-0602](#) [2-382761-4](#) [2-5331677-4](#) [2-640360-3](#) [2801-2-00-50-00-00-07-0](#)