

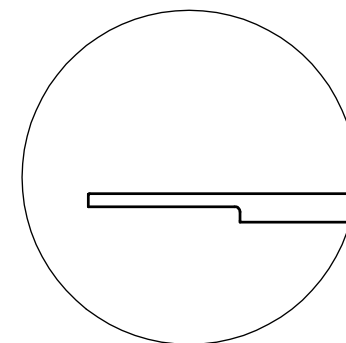
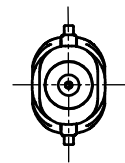
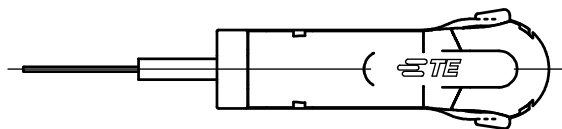
THIS DRAWING IS UNPUBLISHED. RELEASED FOR PUBLICATION

© COPYRIGHT - TE Connectivity Ltd.

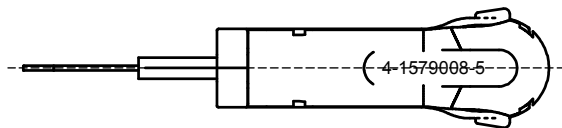
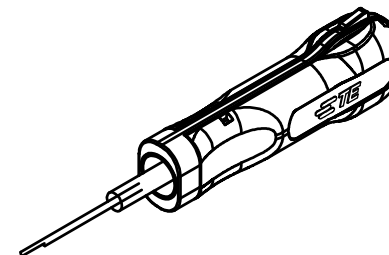
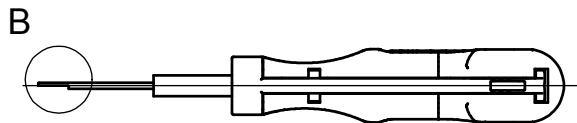
ALL RIGHTS RESERVED.

REVISIONS

P	LTR	DESCRIPTION	DATE	DWN	APVD
	B1	ECR-19-003685	07MAR2019	PNT	GS



B



FOR CONTACTS / HOUSINGS:

.025 TAB, TH

FREI-MASSTOLERANZEN NACH DIN 7168 (WERTE IN mm)

1) ABWEICHEND VON DIN 7168 2) LÄNGE DES KÜRZEREN SCHENKELS


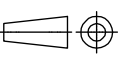
NENNMASS- BEREICH 1)	OBER	0.5				3				6				30				120				400			
		BIS				3				6				30				120				400			
LÄNGEN- MASSE	FEIN	±0.05				±0.05				±0.1				±0.15				±0.2				±0.3			
	MITTEL	±0.1				±0.1				±0.2				±0.3				±0.5				±0.8			
	RADIEN U. FASEN	±0.2				±0.5				±1				±2				±4				±4			
WINKELABMASSE 1) 2)	±1°	±1°				±30'				±20'				±10'				±5'							

GENERAL TOLERANCES ACC. TO DIN 7168 (VALUES IN mm)
1) DEVIATING FROM DIN 7168 2) LENGTH OF SHORT ANGLE SIDE

LOC TEIL IN BEREICH X... MIT PH1 STRICH-NR. (-1 VIE GEZ.),
REVISION-STAND UND LIEFERKARTENSYMBOL GEBÜHRENZEICHNET

AI PART TO BE MARKED WITH PH1 DASH NO. (-1 AS SHOWN),
REV. STATUS AND VENDORS MARK IN AREA X...

DIST	OBERFLÄCHENVERGLEICHSTABELLE					BOHR- DIEH ANGABE
	DIN 3141 R3	▽	▽▽	▽▽▽	▽▽▽▽	
Ra	1.6	1.6	1.6	1.6	1.6	12.5
DIN 150 1302	6.3	1.6	0.4	0.1	0.1	
ALLE UNBEFASSTE KANTEN 0.2x45° ENTGRÄTET REMOVE BURRS, BREAK SHARP EDGES 0.2x45°						HOLE NOT SPEC.

THIS DRAWING IS A CONTROLLED DOCUMENT.		DWN M. pearson 06NOV2006	 TE Connectivity Ltd.	
DIMENSIONS: mm		CHK G. Stegmayer 10MAY2007		
TOLERANCES UNLESS OTHERWISE SPECIFIED:		APVD E. Loiselet 10MAY2007	NAME EXTRACTION TOOL Entriegelungswerkzeug	
		PRODUCT SPEC -	SIZE A3	
MATERIAL		APPLICATION SPEC -	CAGE CODE 00779	DRAWING NO C-4-1579008-5
FINISH		WEIGHT 0.014kg	RESTRICTED TO	
-		CUSTOMER DRAWING		SCALE 1:1
-		SHEET 1 of 1		REV B1

X-ON Electronics

Largest Supplier of Electrical and Electronic Components

Click to view similar products for [Extraction, Removal & Insertion Tools](#) category:

Click to view products by [TE Connectivity](#) manufacturer:

Other Similar products are found below :

[M8196914-08](#) [768211-2](#) [809-131](#) [844751-2](#) [8-59558-2](#) [91018-1](#) [12014013](#) [12093647](#) [1-21048-0](#) [R282867020](#) [12093078](#) [1-21048-6](#)
[12121897](#) [DCF.91.405.5LT](#) [1322](#) [15314260](#) [15350698](#) [15350707](#) [15430130](#) [1579018-4](#) [1643916-1](#) [1-679532-0](#) [1976593-3](#) [OUTEXT-0321](#)
[2-1579008-3](#) [2-1579008-4](#) [229694-7](#) [231106-1](#) [241469](#) [91040-3](#) [91040-7](#) [965004-000](#) [965069-000](#) [1738219-1](#) [ET-JL05-16](#) [FG 0300 146](#)
[3000](#) [FIT-6](#) [210S048](#) [2-1579007-9](#) [231879-1](#) [312138-3](#) [RJ11FODE](#) [356-162](#) [M8196914-10](#) [4-1579018-0](#) [430395-001](#) [483249-1](#) [5-](#)
[1579007-2](#) [5-1579007-9](#) [BPR10](#)