

1 SPECIFICATIONS:
MAGNET WIRE #18 - #34 AWG,
0.16MM(.006")-1.02MM(.040") DIA COPPER.
OTHER SIZES MAY BE ACCOMMODATED,
CONSULT TYCO ELECTRONICS FOR APPROVAL.
MALE BLADE 0.5MM(.020") THICK BRASS

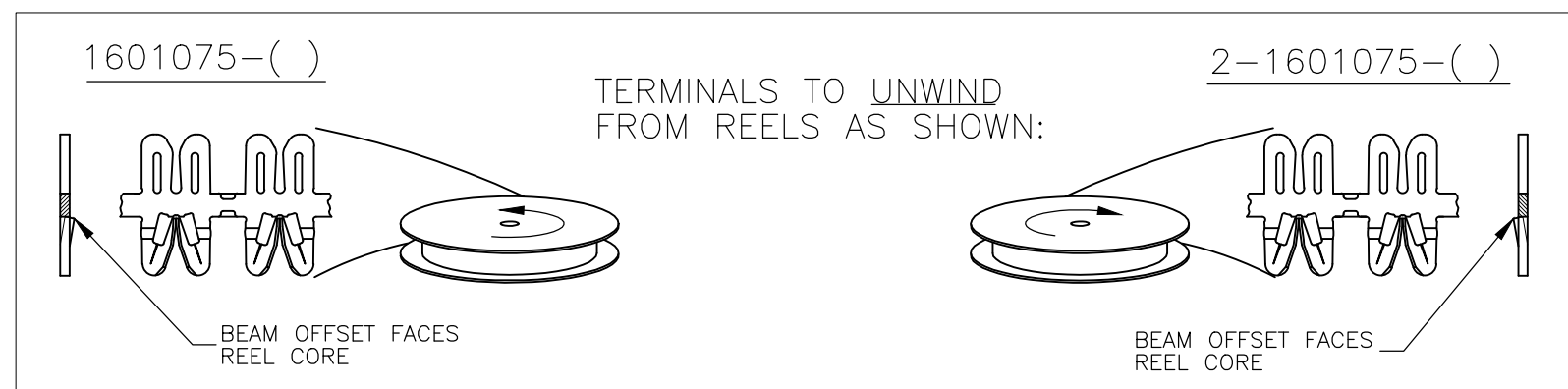
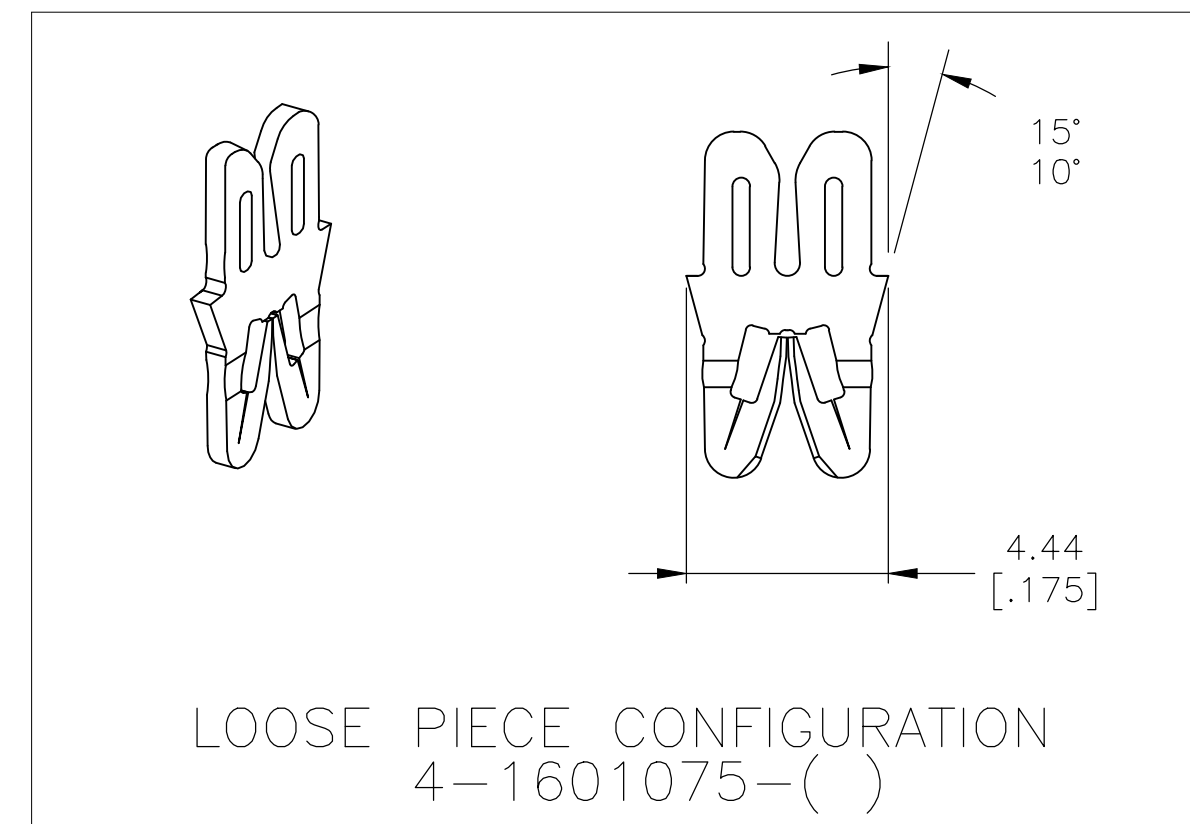
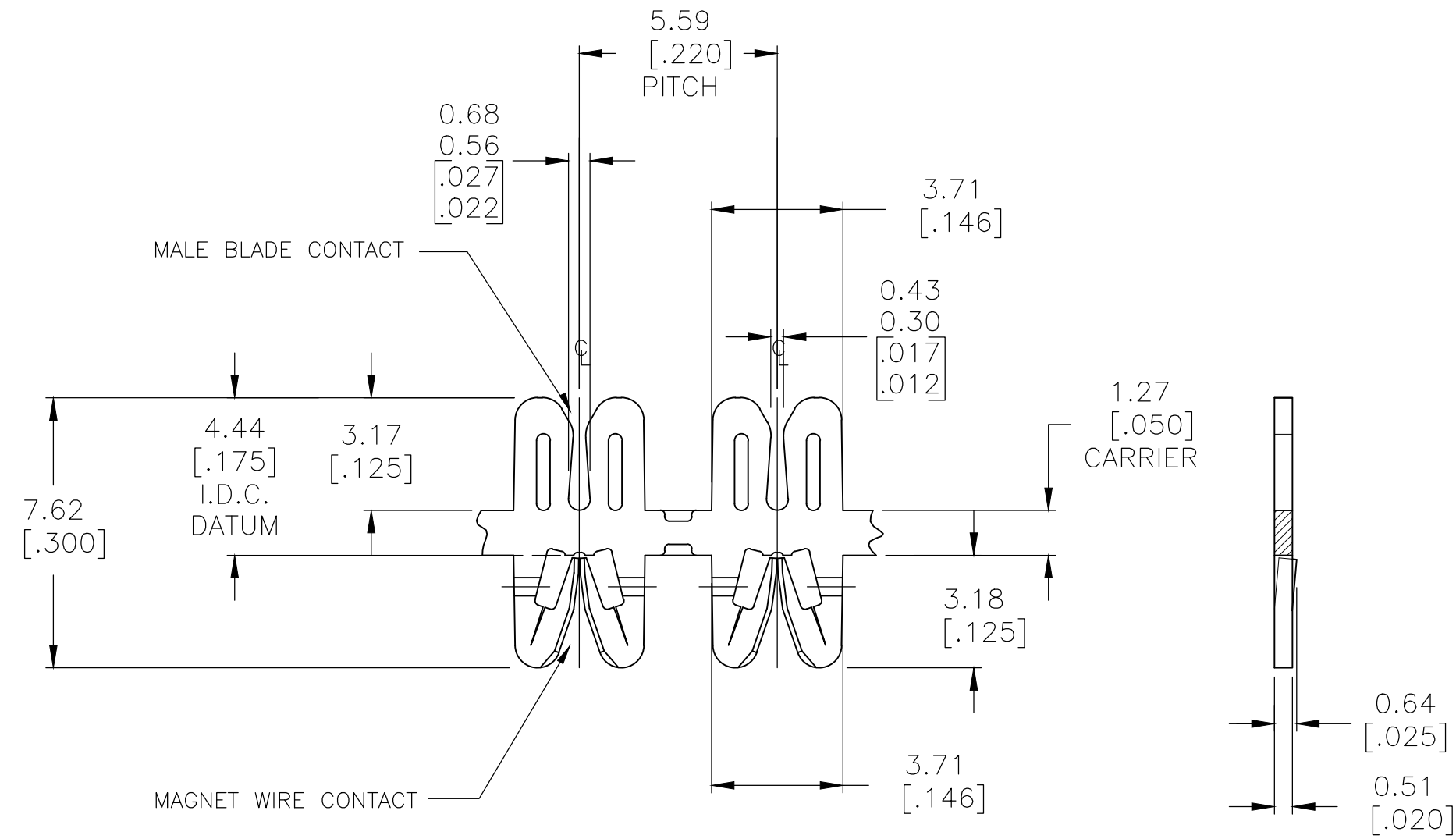
2 POCKET RECOMMENDATION: #1601425

3 TERMINALS TO BE APPLIED PER TYCO ELECTRONICS
SPECIFICATION 114-13166 FIGURE 11.

4 PRODUCT SPECIFICATION: STANDARD SIAMEZE 108-2085

5 PRODUCT SPECIFICATION: HIGH TEMPERATURE 108-2293

6 PRELIMINARY-FOR QUOTATION



5	EXTRA HARD CU ALLOY	UNPLATED	-	6	4-1601075-4
5	EXTRA HARD CU ALLOY	UNPLATED	-	6	2-1601075-4
4	BRASS, SPRING HARD	PRE-TIN PLATE OVER COPPER UNDERPLATE	031-145-014		4-1601075-2
4	BRASS, SPRING HARD	UNPLATED	031-145-014		4-1601075-1
4	BRASS, SPRING HARD	POST TIN PLATE OVER NICKEL UNDERPLATE	-		2-1601075-3
4	BRASS, SPRING HARD	PRE-TIN PLATE OVER COPPER UNDERPLATE	131-146-014		2-1601075-2
4	BRASS, SPRING HARD	UNPLATED	131-146-000		2-1601075-1
4	BRASS, SPRING HARD	PRE-TIN PLATE OVER COPPER UNDERPLATE	131-145-014		1601075-2
4	BRASS, SPRING HARD	UNPLATED	131-145-000		1601075-1
	MATERIAL	FINISH	REFERENCE PART NUMBER		PART NUMBER

THIS DRAWING IS A CONTROLLED DOCUMENT.		DWN J.WELLER 11JAN2002	TE Connectivity Ltd.		
		CHK M.FEHER 11JAN2002			
		APVD K.RANDOLPH 11JAN2002			
DIMENSIONS: mm [INCHES]		TOLERANCES UNLESS OTHERWISE SPECIFIED:		NAME	
		0 PLC ± -		PRODUCT SPEC	
		1 PLC ± 0.25 [.010]		APPLICATION SPEC	
		2 PLC ± 0.13 [.005]		SEE NOTES 3	
MATERIAL SEE TABLE		FINISH SEE TABLE		WEIGHT 0.000000	
		CUSTOMER DRAWING		SCALE 6:1	
		SHEET 1 OF 1		REV D5	

X-ON Electronics

Largest Supplier of Electrical and Electronic Components

Click to view similar products for [TE Connectivity](#) manufacturer:

Other Similar products are found below :

[D38999/24FJ4AN](#) [570416-000](#) [CLTEQ-M81CE-SSRELAY-4-20V](#) [4-1195131-0](#) [650069-000](#) [SMD100-2](#) [358838-000](#) [CB-1022B-78](#)
[RM707012](#) [RP410012](#) [MMS42](#) [1-640426-8](#) [2EDL4CM](#) [DTS20W19-11PD-3028-LC](#) [RM202615](#) [NC6-P104-06](#) [MSPS103B](#) [DTS26F21-](#)
[41HE-LC](#) [DTS26F21-41AE](#) [DTS26F21-41PE-LC](#) [DTS26F21-11SE-3028-LC](#) [30DCB6](#) [1932144-1](#) [293545-4](#) [LVR125S](#) [MS27466T25F4PB](#)
[CKB-38-78010](#) [TR04AI-TINELLOCKRING](#) [1206SFF150F/63-2](#) [D38999/20JB35HA](#) [TE1500A2R2J](#) [D38999/20WC8BB](#) [DTS24F19-11SC-](#)
[3028-LC](#) [D38999/24WG11HA](#) [D38999/24WG11HN](#) [MS27467T21F11H](#) [DJT16E21-11HA](#) [MS27467T21F35J](#) [MS27467T21F11J](#)
[MS27467T21F16H-LC](#) [MS27467T21F35H](#) [MS27467T21F41H-LC](#) [1206SFH150F/24-2](#) [RP330024](#) [DJT16E21-11PA-LC](#) [DJT16E21-11HA-](#)
[LC](#) [DJT16E21-11AA](#) [MS27467T21B11JA](#) [DJT16E21-11JA](#) [MS27467T21B11JA-LC](#)