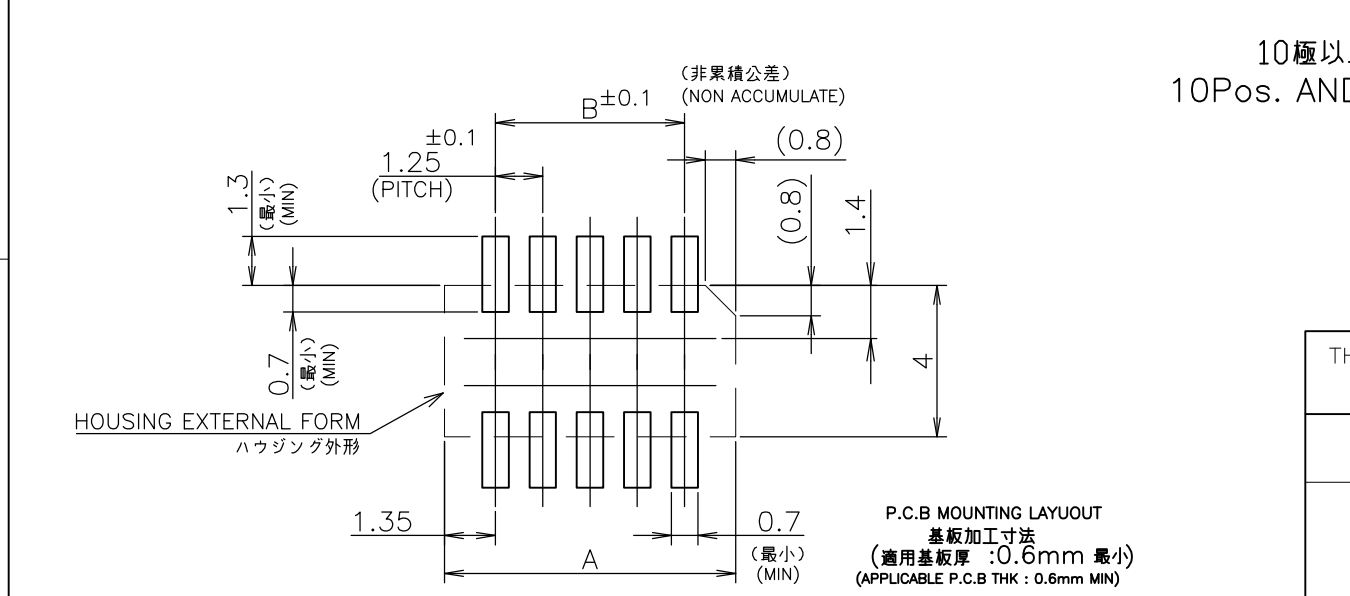
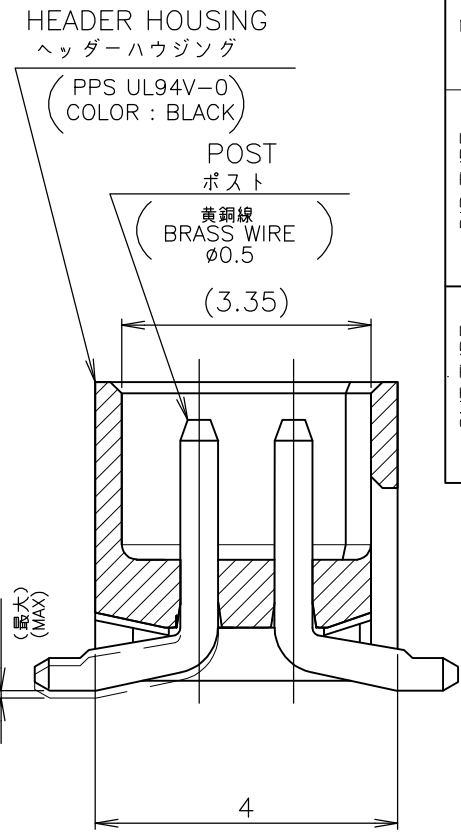
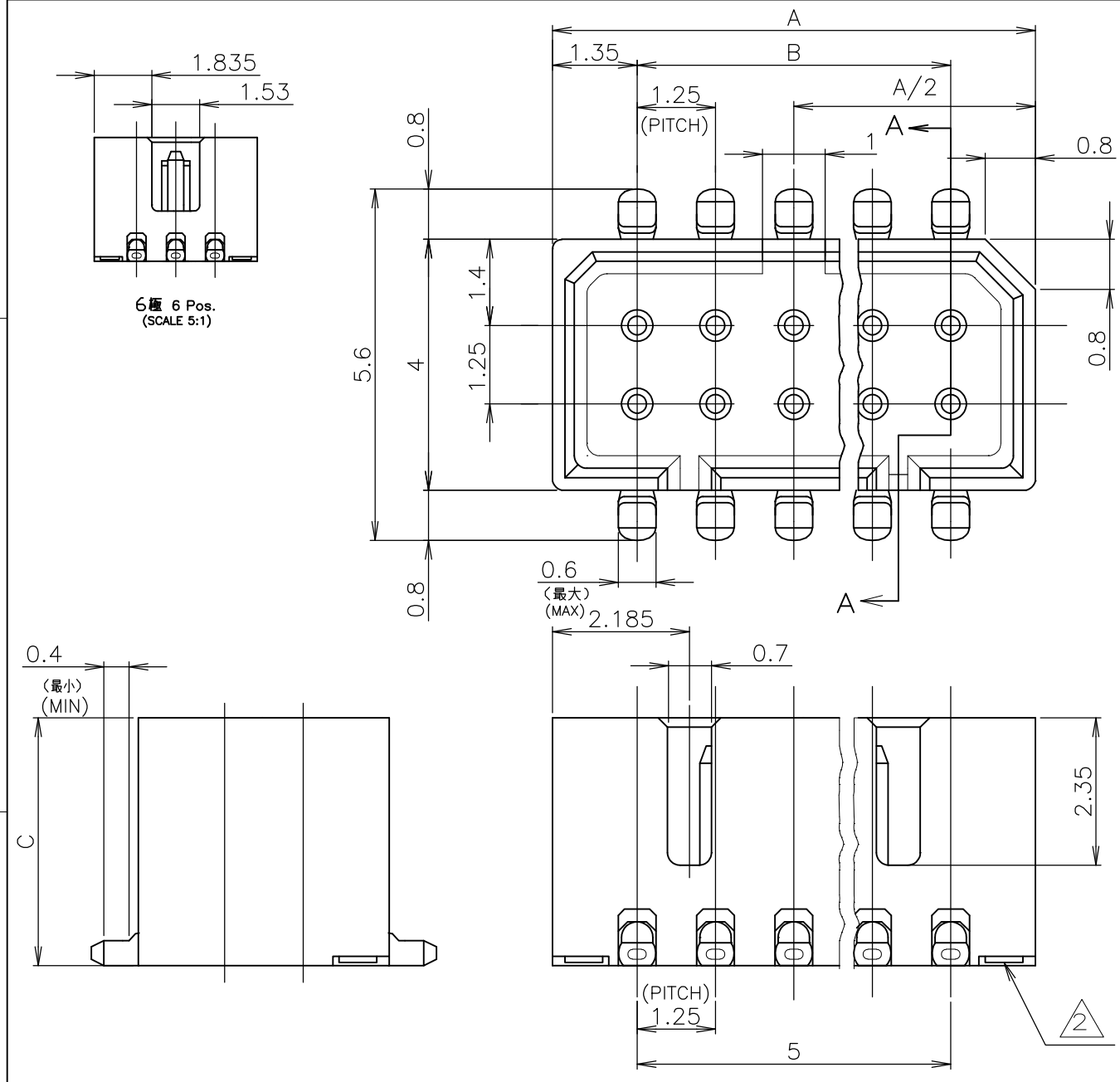


THIS DRAWING IS UNPUBLISHED. RELEASED FOR PUBLICATION
 © COPYRIGHT By - ALL RIGHTS RESERVED.

LOC	DIST	REVISIONS		
		P	LTR	DESCRIPTION
J		L	REVISED	28AUG2011 T.T T.M



10極以上
10Pos. AND MORE

注記
NOTE 1 嵌合相手製品型番及び、嵌合時寸法は MATING COUNTER PART NUMBER AND DIMENSIONS 表-1 参照のこと。 AFTER MATING: SEE TABLE 1. 基板位置決め用ボス切断跡。 CUT MARK OF POSITIONER BOSS.

③ 仕上げ：錫めっき(材料めっき)リフロ- FINISH ; PLI-TIN REFROW
 ④ 仕上げ：ニッケル下地錫めっき(後めっき) FINISH ; TIN PL. Ni UNDER PL. ALL OVER
 ⑤ OBSOLETE PARTS: OBSOLETE CIS STREAMLINING PER D.RENAUD/D.SINISI

嵌合時寸法:巾(mm)x高さ(mm)
DIMENSIONS AFTER MATING : WIDTH(mm) x HEIGHT(mm)

嵌合相手側 MATING COUNTER コネクタ CONN RECE HDR ASSY	SMT TYPE X-174645-X ボス無 WITHOUT BOSS			
	ハウジング高さ C寸法 HOUSING HEIGHT C DIMENSIONS			
	3.95	5.45	5.95	
DIP TYPE	V TYPE X-174635-X X-176870-X	5.6(巾W)x 5.0(高H)	5.6(巾W)x 6.5(高H)	5.6(巾W)x 7.0(高H)
	H TYPE X-174636-X X-176892-X	5.6(巾W)x 5.8(高H)	5.6(巾W)x 7.3(高H)	5.6(巾W)x 7.8(高H)
SMT TYPE	V TYPE ボス無 WITHOUT BOSS X-174904-X X-176768-X ボス付 WITH BOSS X-174639-X X-176311-X	5.6(巾W)x 5.0(高H)	5.6(巾W)x 6.5(高H)	5.6(巾W)x 7.0(高H)
	H TYPE ボス無 WITHOUT BOSS X-174905-X X-176893-X ボス付 WITH BOSS X-174640-X X-176490-X	5.6(巾W)x 6.9(高H)	5.6(巾W)x 7.9(高H)	5.6(巾W)x 8.9(高H)

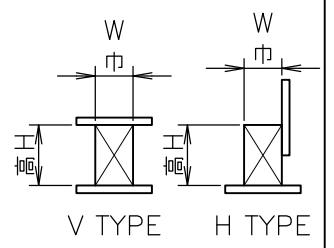


TABLE 1
表-1 SMT TYPEは、巾及び高さ寸法に SMT TYPE INCLUDE DIMENSIONS 半田付タイプ寸法を含みます。 OF SOLDER DIP TIME.

⑤ OBSOLETE	④	'B'		8.75	11.45	16	7	6
	④			5.95	6.25	8.95	12	-2
⑤ OBSOLETE	④			13.75	16.45	24	5	4
	④			12.50	15.20	22	5	-2
⑤ OBSOLETE	④			11.25	13.95	20	5	0
	④			10.00	12.70	18	4	8
	④	'A'		8.75	11.45	16	4	6
	④			7.50	10.20	14	4	-4
	④			6.25	8.95	12	4	-2
	④	'B'	3.95	5.00	7.70	10	4	-0
⑤ OBSOLETE	④	'B'		11.25	13.95	20	2	-0
	④	'A'		8.75	11.45	16	1	-6
	④	'A'	5.45	7.50	10.20	14	1	174645-4
仕上げ FINISH	ボス形状 BOSS TYPE	C	B	A	極数 Pos.	型番 P/N		

THIS DRAWING IS A CONTROLLED DOCUMENT.

DWN J.TANIGAWA 03JUL89
 CHK S.KUKUCHI 03JUL87
 APVD N.ONOUE 03JUL87

PRODUCT SPEC
製品規格
108-5246

APPLICATION SPEC
取付適用規格

MATERIAL ④
FINISH ③

WEIGHT

SCALE 10:1 SHEET 1 OF 1 REV L

CUSTOMER DRAWING

STE TE Connectivity

1.25 F-P CONNECTOR (B-TO-B)
DOUBLE ROW POST HDR ASSY SMT TYPE
WITHOUT BOSS

SIZE A3 CAGE CODE 00779 DRAWING NO G-174645 RESTRICTED TO

X-ON Electronics

Largest Supplier of Electrical and Electronic Components

Click to view similar products for [Board to Board & Mezzanine Connectors](#) category:

Click to view products by [TE Connectivity](#) manufacturer:

Other Similar products are found below :

[589158040000018](#) [MDF7C-18P-2.54DSA\(55\)](#) [FCN-230C068-11](#) [FCN-268F012-G/BD](#) [FCN-268F036-G/BD](#) [FCN-268M012-G/0D](#) [FCN-268M024-G/1D](#) [FCN-723J004/1](#) [MIS-048-01-F-D-DP-K](#) [832-10-034-10-001000](#) [FX4C-80S-1.27DSA](#) [FCN-214Q030-G/0](#) [FCN-234P048-G/0](#) [FCN-235D050-G/C](#) [210-93-314-41-105000](#) [2-22603-0](#) [MDF7-40DP-2.54DSA\(55\)](#) [AXG720047](#) [5031084030](#) [MIT-114-03-F-D-K](#) [55323-1519](#) [DF33-2P-3.3DSA\(24\)](#) [YFT-20-05-H-03-SB-K](#) [503308-3040](#) [026-6203-PDB](#) [027-6203-PDB](#) [069159702701000](#) [10123981-102LF](#) [101A10019X](#) [55650-0588-C](#) [68684-306](#) [75140-7012](#) [589159005003045](#) [194261-1](#) [FCN-268F024-G0D](#) [10124054-515LF](#) [68685-603](#) [8-1616154-3](#) [MIS-019-01-F-D](#) [589159005002045](#) [541371078](#) [IL-WX-10PB-HF-B-E1000E](#) [FCN-268M024-G/3D](#) [20021832-06016C1LF](#) [KX15-20KLDL-E1000E](#) [MDF7-16DP-2.54DSA\(55\)](#) [AXE810124](#) [FCN-214J100-G/0](#) [FCN-230C068-E/S](#) [AXE812124](#)