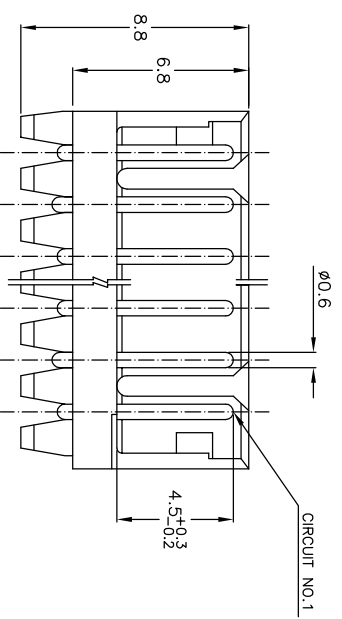
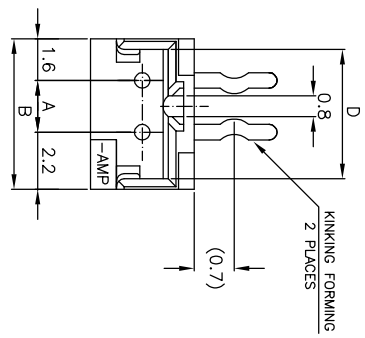
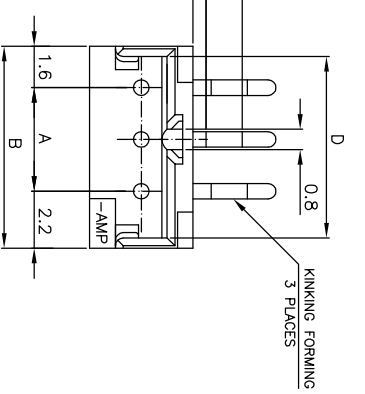
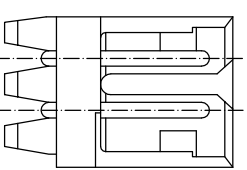
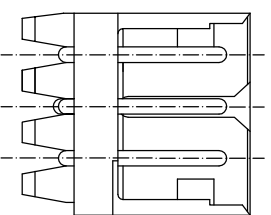
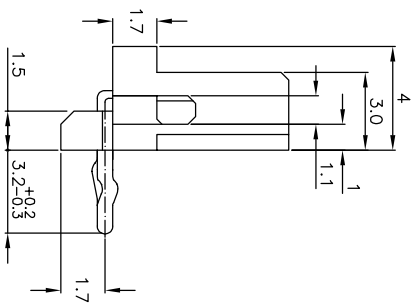


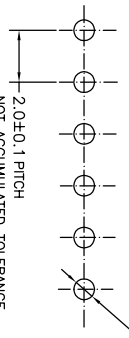
4 Pos.
(SCALE 4-1)



5~15 Pos.



- NOTES:
- MATERIAL: NYLON 66 (UL94V-0)
POST - TIN BRASS
 - APPLICABLE RECEPTACLE P/N 173977
 - THIS PART HAS BEEN OBSOLETE.



0.8±0.1 (PUNCHED HOLE)
0.85⁺⁰-0.05 (DRILLED HOLE)

RECOMMENDABLE PCB LAYOUT
(PCB THK:0.8-1.6)

TOLERANCES UNLESS OTHERWISE SPECIFIED:

10 >	*	±0.2
30 >	*	±0.25
100 >	*	±0.3
ANGLE	>30	±3

7-292253-4	5	4	3	4	1	4	14	28	31.8	25.2	31.0
7-292253-5	5	4	3	4	1	4	14	26	29.8	23.2	29.0
7-292253-6	5	4	3	4	1	4	14	24	27.8	21.2	27.0
7-292253-7	5	4	3	4	1	4	12	22	25.8	19.2	25.0
7-292253-8	5	4	3	4	1	4	11	20	23.8	17.2	23.0
7-292253-9	5	4	3	4	1	4	10	18	21.8	15.2	21.0
7-292253-10	5	4	3	4	1	4	9	16	19.8	13.2	19.0
7-292253-11	5	4	3	4	1	4	8	14	17.8	11.2	17.0
7-292253-12	5	4	3	4	1	4	7	12	15.8	9.2	15.0
7-292253-13	5	4	3	4	1	4	6	10	13.8	7.2	13.0
7-292253-14	5	4	3	4	1	4	5	8	11.8	5.2	11.0
7-292253-15	5	4	3	4	1	4	4	6	9.8	3.2	9.0
7-292253-16	5	4	3	4	1	4	3	4	7.8	—	7.0
7-292253-17	5	4	3	4	1	4	2	2	5.8	—	5.0
7-292253-18	5	4	3	4	1	4	2	2	5.8	—	5.0
7-292253-19	5	4	3	4	1	4	2	2	5.8	—	5.0
7-292253-20	5	4	3	4	1	4	2	2	5.8	—	5.0
7-292253-21	5	4	3	4	1	4	2	2	5.8	—	5.0
7-292253-22	5	4	3	4	1	4	2	2	5.8	—	5.0
7-292253-23	5	4	3	4	1	4	2	2	5.8	—	5.0
7-292253-24	5	4	3	4	1	4	2	2	5.8	—	5.0
7-292253-25	5	4	3	4	1	4	2	2	5.8	—	5.0
7-292253-26	5	4	3	4	1	4	2	2	5.8	—	5.0
7-292253-27	5	4	3	4	1	4	2	2	5.8	—	5.0
7-292253-28	5	4	3	4	1	4	2	2	5.8	—	5.0
7-292253-29	5	4	3	4	1	4	2	2	5.8	—	5.0
7-292253-30	5	4	3	4	1	4	2	2	5.8	—	5.0
7-292253-31	5	4	3	4	1	4	2	2	5.8	—	5.0
7-292253-32	5	4	3	4	1	4	2	2	5.8	—	5.0
7-292253-33	5	4	3	4	1	4	2	2	5.8	—	5.0
7-292253-34	5	4	3	4	1	4	2	2	5.8	—	5.0
7-292253-35	5	4	3	4	1	4	2	2	5.8	—	5.0
7-292253-36	5	4	3	4	1	4	2	2	5.8	—	5.0
7-292253-37	5	4	3	4	1	4	2	2	5.8	—	5.0
7-292253-38	5	4	3	4	1	4	2	2	5.8	—	5.0
7-292253-39	5	4	3	4	1	4	2	2	5.8	—	5.0
7-292253-40	5	4	3	4	1	4	2	2	5.8	—	5.0
7-292253-41	5	4	3	4	1	4	2	2	5.8	—	5.0
7-292253-42	5	4	3	4	1	4	2	2	5.8	—	5.0
7-292253-43	5	4	3	4	1	4	2	2	5.8	—	5.0
7-292253-44	5	4	3	4	1	4	2	2	5.8	—	5.0
7-292253-45	5	4	3	4	1	4	2	2	5.8	—	5.0
7-292253-46	5	4	3	4	1	4	2	2	5.8	—	5.0
7-292253-47	5	4	3	4	1	4	2	2	5.8	—	5.0
7-292253-48	5	4	3	4	1	4	2	2	5.8	—	5.0
7-292253-49	5	4	3	4	1	4	2	2	5.8	—	5.0
7-292253-50	5	4	3	4	1	4	2	2	5.8	—	5.0

THIS DRAWING IS A CONTROLLED DOCUMENT.

DMN	S.XU	31JAN03
CHK	S.YAO	31JAN03
APD	T.SASAKI	31JAN03
PRODUCT SPEC	108-60016	
APPLICATION SPEC		
WEIGHT		

TYCO Electronics Corporation
SHANGHAI, CHINA

POST HEADER ASS'Y HORIZONTAL TYPE
(AMP CT CONNECTOR 2mm PITCH)

SIZE	A3	DATE CODE	00779	DRAWING NO	292253	RESTRICTED TO	
SCALE	5:1	SHEET	1	OF	1	REV	A

X-ON Electronics

Largest Supplier of Electrical and Electronic Components

Click to view similar products for [Headers & Wire Housings](#) category:

Click to view products by [TE Connectivity](#) manufacturer:

Other Similar products are found below :

[892-18-020-10-001101](#) [58102-G61-06LF](#) [582553-1](#) [0009485154](#) [009176003701906](#) [0050291907](#) [LY20-4P-DT1-P1E-BR](#) [02.125.8002.8](#)
[609-3404](#) [61062-3](#) [61082-181009](#) [622-3653LF](#) [63453-116](#) [636-1030](#) [636-1427](#) [636-3427](#) [636-4007](#) [641938-9](#) [641991-4](#) [644827-2](#) [65817-](#)
[010LF](#) [65817-015LF](#) [65863-015LF](#) [66207-023LF](#) [67095-007LF](#) [67601157](#) [68645-018](#) [68648-049](#) [70.362.1628.0](#) [70-4210](#) [70-4226B](#) [70-](#)
[4853B](#) [707-5020](#) [707-5028](#) [71.350.2428.0](#) [71918-208LF](#) [71961-016LF](#) [733-134](#) [733-162](#) [754199-000](#) [760-3052](#) [79531-3000](#) [FCN-](#)
[360C032-B](#) [FCN-367T-T012/H](#) [FCN-723D010/2](#) [80.063.4001.1](#) [800-90-010-10-002000](#) [801-43-002-10-013000](#) [801-43-006-10-002000](#)
[801-93-011-10-001000](#)