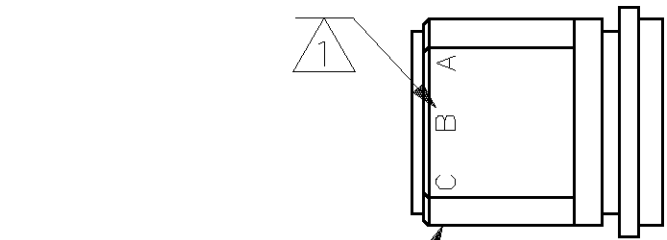


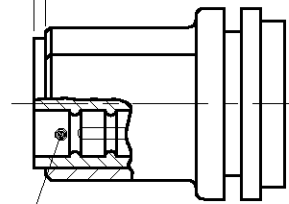
THIS DRAWING IS UNPUBLISHED. RELEASED FOR PUBLICATION, 19
 © COPYRIGHT 19 BY AMP INCORPORATED. ALL INTERNATIONAL RIGHTS RESERVED.

LOC	DIST	P	F	ZONE	LTR	DESCRIPTION	DATE	APPD
DF	50				A	REV PER 063D-0228-99 CT	4-00	DE

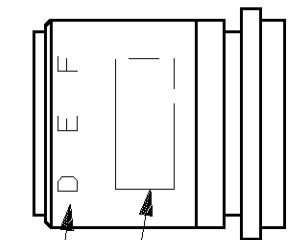


PLUG SHELL
 MAT'L: POLYESTER
 MLDG. CMPD.
 COLOR: BLACK

.030 ± .005

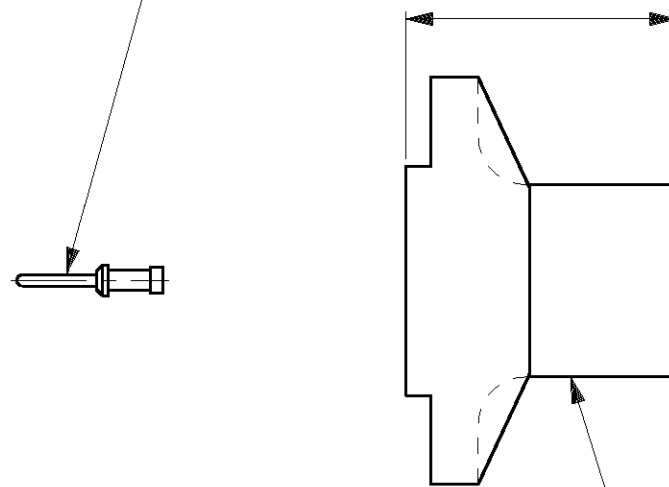


MOLDED SLUG
 MAT'L: SILICONE RUBBER
 COLOR: RED

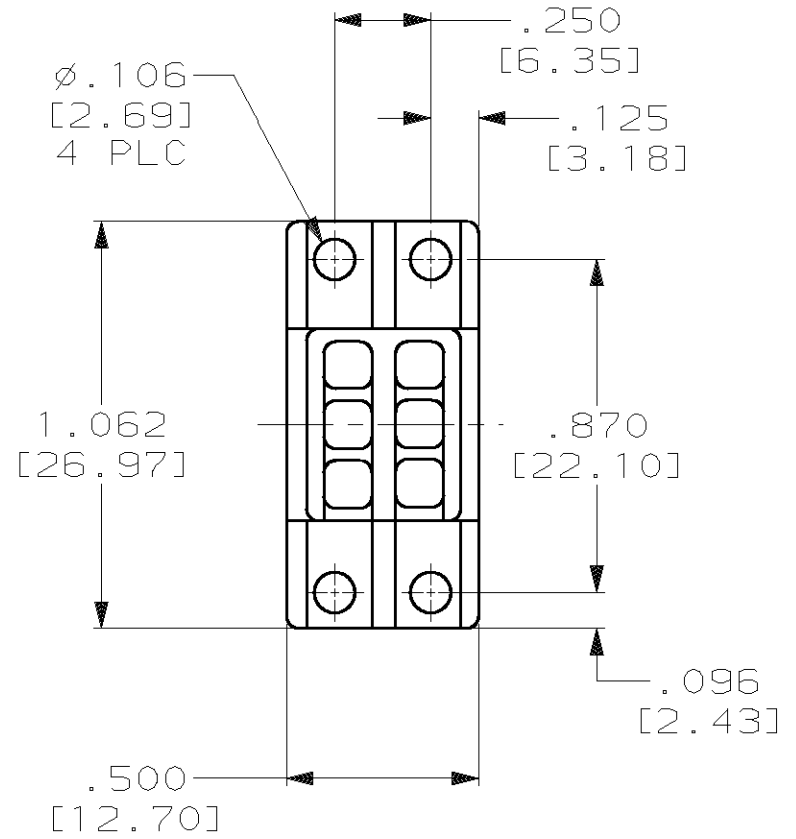


AMP INFORMATION

PIN CONTACT; SIZE #22 (QTY=6)
 MAT'L: BRONZE PER ASTM-B-140
 FINISH: GOLD PER MIL-G-45204
 OVER NICKEL PER QQ-N-290



POTTING SHELL
 MAT'L: POLYESTER
 MLDG. CMPD.
 COLOR: BLACK



1 MARKED PER MIL-STD-130.

THIS DRAWING IS A CONTROLLED DOCUMENT FOR AMP INCORPORATED. IT IS SUBJECT TO CHANGE AND THE CONTROLLING ENGINEERING ORGANIZATION SHOULD BE CONTACTED FOR THE LATEST REVISION.

DO NOT SCALE PRINT. UNLESS SPECIFIED DIMENSIONS IN INCHES [mm]		DR 7-9-92		448479-1	
TOLERANCES ON:		C.C. THOMAS		PART NO	
2 PLC DEC ± -		CHK 7-13-92		AMP INCORPORATED	
3 PLC DEC ± .005 [0.13]		D.EABY		Harrisburg, Pa. 17105	
ANGLES ± -		APPD 7-13-92		NAME	
MATERIAL		D.EABY		SUB MINIATURE PLUG KIT,	
SEE CALLOUT		APPD 7-13-92		HIGH VOLTAGE,	
FINISH		C.C. THOMAS		6 PIN, RIGHT ANGLE	
SEE CALLOUT		PRODUCT SPEC		SIZE	
		-		B	
		APPLICATION SPEC		FSCM NO	
		-		00779	
		WEIGHT		DRAWING NO	
		-		448479	
				SCALE	
				2:1	
				SHEET	
				1 OF 1	

CUSTOMER DRAWING

X-ON Electronics

Largest Supplier of Electrical and Electronic Components

Click to view similar products for [Standard Circular Connector](#) category:

Click to view products by [TE Connectivity](#) manufacturer:

Other Similar products are found below :

[5M2530B10P](#) [600259N006](#) [600273N007](#) [6134-336-13149](#) [6134-337-11149](#) [6134-337-2390](#) [6134-341-17149](#) [6280-4SG-516](#) [6280-7SG-3DC](#)
[6290](#) [6291A](#) [66200A-10](#) [680-SMG](#) [681-PMG](#) [CXS3102A14S2P](#) [CXS3102A181S](#) [7271-6SG-300](#) [7282-3PG-300-CH3](#) [75-474014-05S](#) [75-](#)
[474618-01S](#) [75-474618-04P](#) [75-474618-04S](#) [799539-000](#) [MI8-SE](#) [805-005-07NF11-19PC](#) [805-005-07NF15-7PA](#) [8280-4PG-516](#) [8280-7PG-](#)
[519](#) [8282-5PG-519](#) [836783-1](#) [MP-4102-25P-C](#) [862256-1](#) [864019-2](#) [866857-1](#) [867865-1](#) [PT01SP-14-18P](#) [PT08P-14-5S](#) [120-1833-000](#)
[QCM019PC2DC012B](#) [1-2069279-1](#) [121583-0217](#) [121667-0020](#) [129591AU](#) [1000B BULK](#) [RD10A16-19-P6CS051/1](#) [RD10A20-31-](#)
[P8CS051/1](#) [RD16A14-12-S6CS051/2](#) [1301240290](#) [1301240347](#) [1301860202](#) [1301240268](#)